

DECEMBER 20

GREENHOUSE GAS INVENTORY

SOUTH WAIRARAPA DISTRICT COUNCIL - 2019



**SOUTH WAIRARAPA
DISTRICT COUNCIL**
Kia Reretahi Tātau

Contents

1	Summary	2
2	Introduction	6
3	Organisation Description	6
4	Inventory boundaries.....	7
4.1	Organisational boundaries.....	7
4.1.1	Organisational boundaries included for this reporting period	7
4.1.2	Organisational business units excluded from inventory.....	8
4.2	Reporting boundaries	8
4.2.1	GHG emission sources inclusions.....	8
4.2.2	GHG emission source exclusions.....	9
5	Data collection and uncertainties	9
6	GHG emission calculations and results	11
6.1	Evolution of the GHG emissions	11
6.1.1	Base year	11
6.1.2	Evolution of the GHG emissions and significant emissions changes	11
6.2	Emissions for all seven GHGs	14
6.3	Gross emissions by scope, business unit and source.....	15
6.4	Emissions from biologically sequestered carbon.....	18
7	Liabilities	19
7.1	GHG stocks held	19
7.2	Land-use change	19
8	Methodology and references.....	20
8.1	Methodology.....	20
8.2	References	20

1 Summary

	Scope	t Co ₂ e - 2018	t Co ₂ e - 2019	Uncertainties
CORPORATE SERVICES		34.29	42.98	[42.71 ; 43.26]
<i>Electricity</i>	Scope 2	5.32	4.58	*
<i>T&D losses¹</i>	Scope 3	0.4	0.35	*
<i>Transport - Diesel</i>	Scope 1	7.35	12.87	*
<i>Transport - Petrol</i>	Scope 1	16.56	18.67	*
<i>Transport - Flights</i>	Scope 3	1.93	3.78	*
<i>Waste</i>	Scope 3	2.73	2.73	+/-10% [2.46 ; 3.01]
<i>Refrigerant</i>	Scope 1	0	0	*
COMMUNITY SERVICES		20.03	24.44	24.44*
<i>Electricity</i>	Scope 2	18.62	22.72	*
<i>T&D losses</i>	Scope 3	1.41	1.72	*
OPERATIONS		53.67	43.83	43.83*
<i>Electricity - Other</i>	Scope 2	0.32	0.32	*
<i>Electricity - Streetlights</i>	Scope 2	29.59	22.42	*
<i>T&D losses</i>	Scope 3	2.27	1.72	*
<i>Transport - Diesel</i>	Scope 1	7.64	6.23	*
<i>Transport - Petrol</i>	Scope 1	13.86	13.14	*
WATER		613.1	471.92	[208.94 ; 783.87]
<i>Water supply</i>	Scope 3	46.04	46.05	*
<i>Wastewater treatment</i>	Scope 3	567.07	425.87	+/-10% activity data +/-40% CH ₄ factor +/-90% N ₂ O factor [162.89; 737.82]
PARKS AND RESERVES		30.1	29.60	29.60*
<i>Electricity</i>	Scope 2	25.49	24.30	*

¹ Transport and Distribution

<i>T&D losses</i>	Scope 3	1.93	1.84	*
<i>Transport - Diesel</i>	Scope 1	0	0	*
<i>Transport - Petrol</i>	Scope 1	2.67	3.46	*
REGULATORY		12.91	12.73	12.73*
<i>Transport - Diesel</i>	Scope 1	11.48	11.58	*
<i>Transport - Petrol</i>	Scope 1	1.43	1.15	*
GROSS EMISSIONS		764.10	625.50	[362.24; 937.72]

* Uncertainties exist but are not quantifiable

Table 1: Emissions by business units

	t Co ₂ e - 2018	t Co ₂ e - 2019	Uncertainties
Scope 1	60.99	67.10	67.10*
Scope 2	79.34	74.34	74.34*
Scope 3	623.77	484.06	[220.8 ; 796.28]
GROSS EMISSIONS	764.10	625.50	[362.24; 937.72]

* Uncertainties exist but are not quantifiable

Table 2: Emissions by scopes

	t Co₂e - 2018	t Co₂e - 2019	Uncertainties
ELECTRICITY	85.35	79.97	79.97*
<i>Streetlights</i>	29.59	22.42	*
<i>Other</i>	49.75	51.92	*
<i>T&D losses</i>	6.01	5.63	*
TRANSPORT	62.92	70.88	70.88*
<i>Petrol</i>	34.52	36.42	*
<i>Diesel</i>	26.47	30.68	*
<i>Flights</i>	1.93	3.78	*
WASTEWATER	567.07	425.87	+/-10% activity data +/-40% CH ₄ factor +/-90% N ₂ O factor [162.89; 737.82]
WATER SUPPLY	46.04	46.05	46.05*
WASTE	2.73	2.73	+/-10% [2.46 ; 3.01]
REFRIGERANT	0.00	0.00	0*
GROSS EMISSIONS	764.10	625.50	[362.24; 937.72]

* Uncertainties exist but are not quantifiable

Table 3: Emissions by sources

	t Co ₂ e - 2018	t Co ₂ e - 2019
GROSS EMISSIONS	764.10	625.50
<i>Forestry (removals)</i>	-2,513.47	-2,432.67
<i>Forestry (harvest emissions)</i>	4,950.74	2,262.39
TOTAL	2,437.27	-170.28
NET EMISSIONS	3,201.37	455.22

Table 4: Forestry

	2018	2019
Gross emissions per FTE (t CO ₂ e) 2018: 41 FTE 2019: 44 FTE	18.66	14.22
Gross emissions per capita (kg CO ₂ e) 2018: 10,569 2019: 11,100	72.40	56.35

Table 5: Emissions per FTE and per head of population

2 Introduction

This report is the annual greenhouse gas (GHG) emissions² inventory report for South Wairarapa District Council. The inventory is a complete and accurate quantification of the amount of GHG emissions that can be directly attributed to the organisation's operations within the declared boundary and scope for the specified reporting period.

The inventory has been prepared in accordance with the requirements of the *Greenhouse Gas Protocol: A Corporate Accounting and Reporting Standard (2004)* and *ISO 14064-1:2006 Specification with Guidance at the Organization Level for Quantification and Reporting of Greenhouse Gas Emissions and Removals*³.

3 Organisation Description

South Wairarapa District Council (SWDC) is the territorial authority for the South Wairarapa District. SWDC is located in the heart of the Wairarapa. The 30th of June 2019, SWDC employed 44 FTEs (Full Time-Equivalent) and is responsible for water and wastewater, waste, local roads (excluding State Highway), streetlighting, parks and reserves, community facilities and performing statutory duties such as regulatory compliance.

The council is organised as shown below:

- Corporate services,
- Community services,
- Operations,
- Water,
- Parks and reserves,
- Regulatory.

² Throughout this document 'emissions' means GHG emissions.

³ Throughout this document 'GHG Protocol' means the GHG Protocol Corporate Accounting and Reporting Standard and 'ISO 14064- 1:2006' means the international standard Specification with Guidance at the Organizational Level for Quantification and Reporting of Greenhouse Gas Emissions and Removals.

4 Inventory boundaries

This inventory covers a period from January 2019 to December 2019.

4.1 Organisational boundaries

4.1.1 Organisational boundaries included for this reporting period

Organisational boundaries were set with reference to the methodology described in the GHG Protocol and ISO 14064-1:2006 standards. The GHG Protocol allows two distinct approaches to consolidate GHG emissions: the equity share and control (financial or operational) approaches. We used an operational control approach to account for emissions.

This GHG inventory includes all the council's business units as shown in Figure 1: Organisational structure below.

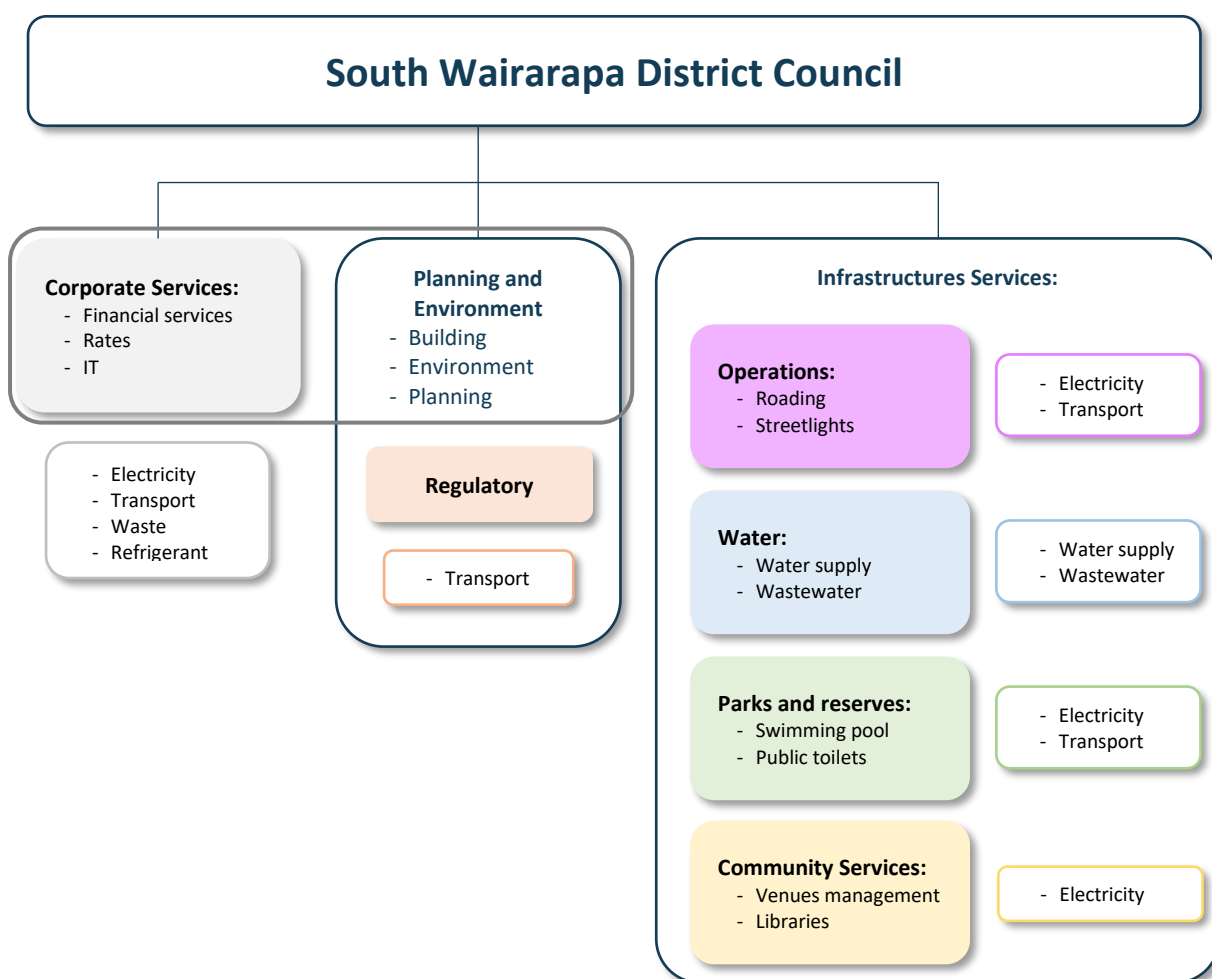


Figure 1: Organisational structure and emission sources

Planning and environment service share the same building as Corporate services. Therefore, it has been aggregated under the same business unit "Corporate services". However, because the Regulatory service has dedicated vehicles, it was possible to create its own business unit.

The operational control of the water services has been transferred to Wellington Water in October 2019. However, to stay consistent with the previous greenhouse gas inventories, it is still included in this inventory.

4.1.2 Organisational business units excluded from inventory

Business unit	GHG emission source	Scope	Reason for exclusion
Community services - Properties	Electricity	Scope 2	Tenants pay their own power accounts
Operations - Waste management	Waste from the community	Scope 3	Outside of SWDC operational control Contractor: Earth Care
Operations - Roading	Emissions from road maintenance	Scope 3	Outside of SWDC operational control Contractor: Fulton Hogan

Table 6: Business units and GHG emission source excluded from this inventory

4.2 Reporting boundaries

4.2.1 GHG emission sources inclusions

The GHG emissions sources included in this inventory were identified with reference to the methodology in the *GHG Protocol and ISO14064-1:2006 standards*. As adapted from the *GHG Protocol*, these emissions were classified under the following categories:

- **Direct GHG emissions (Scope 1):** emissions from sources that are owned or controlled by the company (emissions from vehicles, refrigerant leaks)
- **Electricity indirect GHG emissions (Scope 2):** emissions from the generation of purchased electricity consumed by the company.
- **Other indirect GHG emissions (Scope 3):** emissions that occur as a consequence of the company's activities but from sources not owned or controlled by the company (waste, wastewater, energy transport and distribution losses, ...).

This inventory considers:

- Corporate services:
 - Electricity
 - Transport and distribution losses
 - Transport – Diesel
 - Transport – Petrol
 - Transport – Flights
 - Waste
 - Refrigerant
- Community services:
 - Electricity
 - Transport and distribution losses
- Operations:
 - Electricity – Other
 - Electricity – Streetlights
 - Transport and distribution losses
 - Transport – Diesel
 - Transport – Petrol
- Water:
 - Water supply
 - Wastewater treatment

- Parks and reserves:
 - Electricity
 - Transport and distribution losses
 - Transport – Diesel
 - Transport – Petrol
- Regulatory:
 - Transport – Diesel
 - Transport – Petrol

4.2.2 GHG emission source exclusions

For more information, refer to Table 6: Business units and GHG emission source excluded from this inventory.

5 Data collection and uncertainties

Table 7 gives an overview of how data were collected for each GHG emissions source, the source of the data and an explanation of any uncertainties or assumptions.

A calculation methodology has been used for quantifying the emissions inventory using emissions source activity data multiplied by emission or removal factors. All emission factors and uncertainties were sourced from the Ministry for the Environment’s 2019 *Measuring Emissions: A Guide for Organisations*.

Business Unit	GHG emission source	Scope	Data source	Data collection unit	Uncertainty (description)
Corporate services	Electricity	Scope 2	Electricity company	kWh	Low It is assumed that the meter readings were done correctly
	Transport and distribution losses	Scope 3			
Corporate services	Transport - Diesel	Scope 1	Fuel company	L	Low It is assumed that the supplier reports are complete and accurate
	Transport - Petrol	Scope 1			
	Transport - Flights	Scope 3	Finance team	Km	Low/Moderate It is assumed that the supplier invoices are complete and accurate. The distance between airports has been estimated
Corporate services	Waste	Scope 3	Council officer	Kg	Moderate Estimation made by the staff in charge of the waste collection
Corporate services	Refrigerant	Scope 1	A/C company	Kg	Low It is assumed that the supplier data is complete and accurate
Community services	Electricity	Scope 2	Electricity company	kWh	Low It is assumed that the meter readings were done correctly
	Transport and distribution losses	Scope 3			
Operations	Electricity - other	Scope 2	Electricity company	kWh	Low It is assumed that the meter readings were done correctly
	Electricity - Streetlights	Scope 2			
	Transport and distribution losses	Scope 3			
Operations	Transport - Diesel	Scope 1	Fuel company	L	Low It is assumed that the supplier reports are complete and accurate
	Transport - Petrol	Scope 1			

Business Unit	GHG emission source	Scope	Data source	Data collection unit	Uncertainty (description)
Water	Water supply	Scope 3	Council officer	m ³	Low It is assumed that the data source is an appropriate representation of activities
	Wastewater treatment	Scope 3	Council officer	m ³	Low It is assumed that the data source is an appropriate representation of activities
Parks and reserves	Electricity	Scope 2	Electricity company	kWh	Low It is assumed that the meter readings were done correctly
	Transport and distribution losses	Scope 3			
Parks and reserves	Transport - Diesel	Scope 1	Fuel company	L	Low It is assumed that the supplier reports are complete and accurate
	Transport - Petrol	Scope 1			
Regulatory	Transport - Diesel	Scope 1	Fuel company	L	Low It is assumed that the supplier reports are complete and accurate
	Transport - Petrol	Scope 1			

Table 7: GHG emission sources, data collection and uncertainty

6 GHG emission calculations and results

6.1 Evolution of the GHG emissions

6.1.1 Base year

The first greenhouse gas inventory done for South Wairarapa District Council was made in 2018 (January to December). It set up the baseline.

6.1.2 Evolution of the GHG emissions and significant emissions changes

The gross emissions decreased by 18% between 2018 and 2019. This is mainly due to a fall in the Wastewater Treatment Plants emissions (-25%).

The emissions from the business units Corporate Services and Community Services increased by 24.5% and 23.5% (due to transport emissions for the Corporate Services and electricity for Community Services). All the emissions from the other business units decreased.

The scope 2 and 3 increased (-6% and -22% respectively) and scope 1 increased (+10%).

The emissions from transports increased (+13%) while the emissions coming from electricity and wastewater decreased (-6% and -25% respectively). Emissions coming from solid waste, water supply and refrigerant are steady.

Net emissions reduced a lot (-86%) due to lower harvest emissions. Emissions sequestered by the forests decreased slightly (-3%).

	Evolution 2018 - 2019
Corporate Services	+25.36%
Community Services	+22.00%
Operations	-18.34%
Water supply and Wastewater treatment	-23.03%
Parks and Reserves	-1.66%
Regulatory	-1.41%
GROSS EMISSIONS	-18.14%

Table 8: Changes for the emissions by business units between 2018 and 2019

	Evolution 2018 - 2019
Scope 1	+10.02%
Scope 2	-6.30%
Scope 3	-22.40%
GROSS EMISSIONS	-18.14%

Table 9: Changes for the emissions by scopes between 2018 and 2019

	Evolution 2018 - 2019
Electricity	-6.31%
Transport	+12.65%
Wastewater	-24.90%
Water supply	+0.03%
Waste	0%
Refrigerant	0%
GROSS EMISSIONS	-18.14%

Table 10: Changes for the emissions by sources between 2018 and 2019

	Evolution 2018 - 2019
Gross emissions per FTE	-23.72%
Gross emissions per capita	-22.06%

Table 11: Changes for the emissions per FTE and per capita between 2018 and 2019

	Evolution 2018 - 2019
GROSS EMISSIONS	-18.14%
Sequestration (forest)	-3.21%
Harvest emissions	-54.30%
NET EMISSIONS	-85.78%

Table 12: Changes for the net emissions between 2018 and 2019

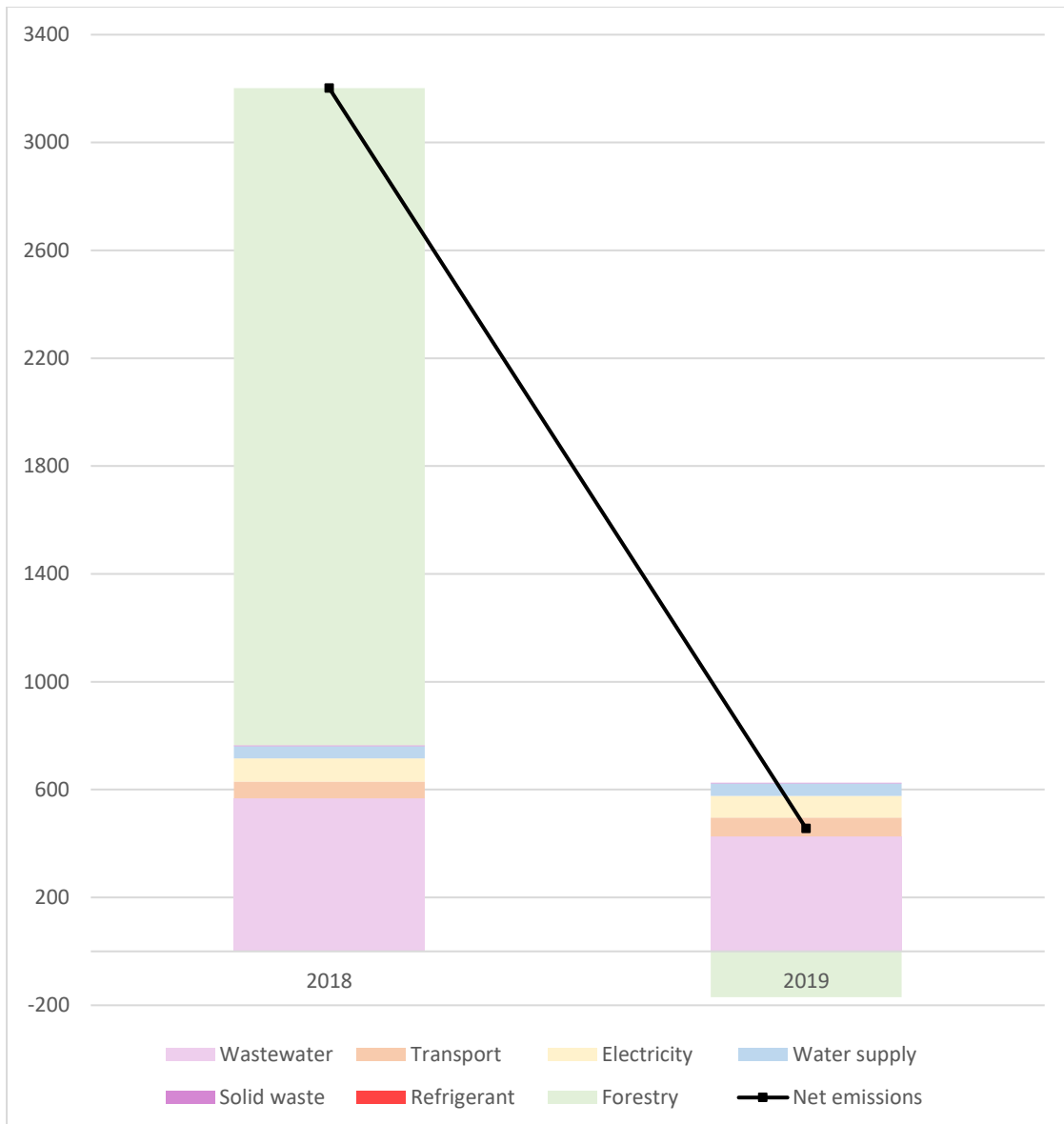


Figure 2: Annual emissions showing gross and net emissions (including forestry) since 2018

6.2 Emissions for all seven GHGs

The seven GHG included in this inventory are:

- Carbon dioxide: CO₂
- Methane: CH₄
- Nitrous oxide: N₂O
- Hydrofluorocarbons: HFCs
- Perfluorocarbons: PFCs
- Sulfur hexafluoride: SF₆
- Nitrogen trifluoride: NF₃

	2018	2019	Uncertainties
t CO₂ e	765.18	625.50	[362.24 ; 937.72]
t CO₂	285.7	262.82	[255.43 ; 270.21]
t CH₄	197.85	152.67	[86.25 ; 230.60]
t N₂O	278.91	210.00	[20.56 ; 436.91]
t HFCs	0	0	
t PFCs	0	0	
t SF₆	0	0	
t NF₃	0	0	

Table 13: Emissions for all seven GHGs

6.3 Gross emissions by scope, business unit and source

GHG emissions for South Wairarapa District Council for 2019 are provided in the GHG Inventory summary section at the start of this report.

The following figures give an overview of where the gross emissions are occurring across the organisation.

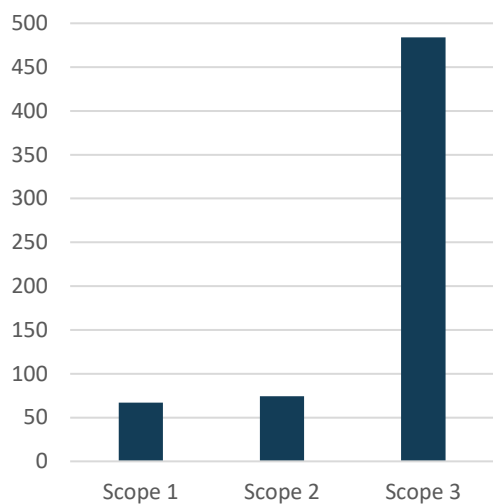


Figure 3: Gross emissions by scope (tCO₂e)

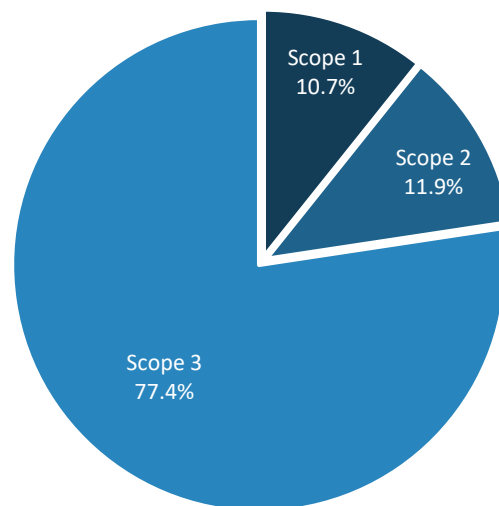


Figure 4: Gross emissions by scope (%)

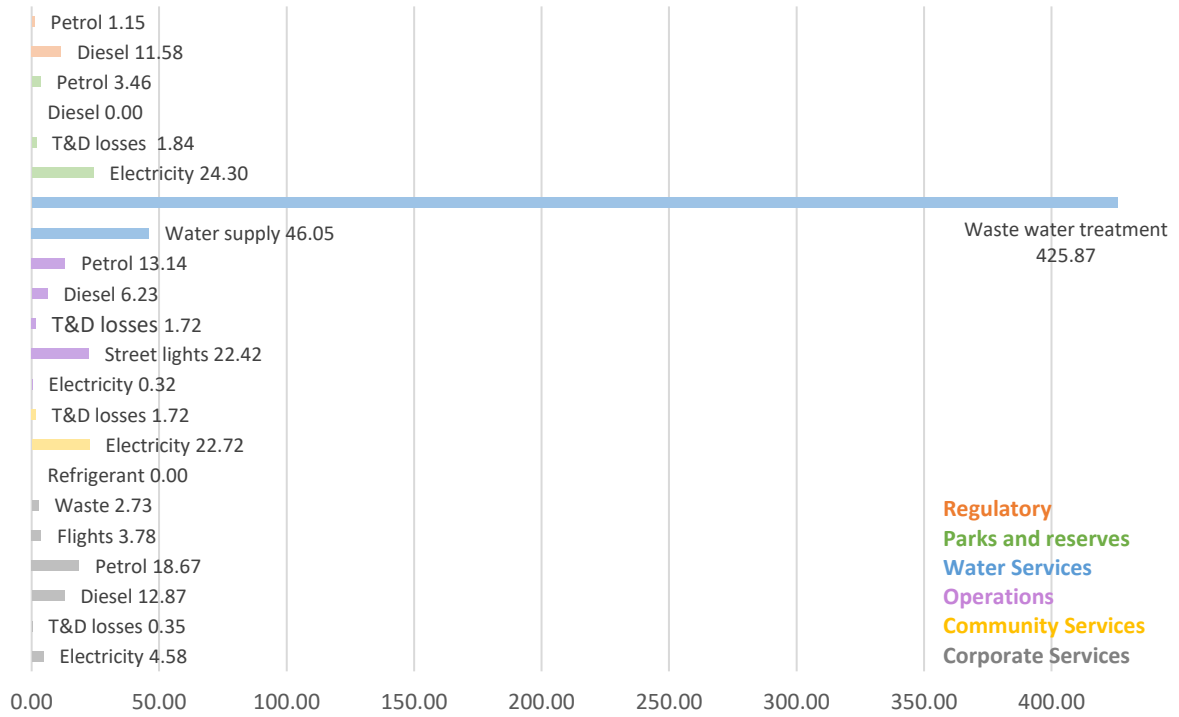


Figure 5: Gross emissions by business unit (tCO₂e)

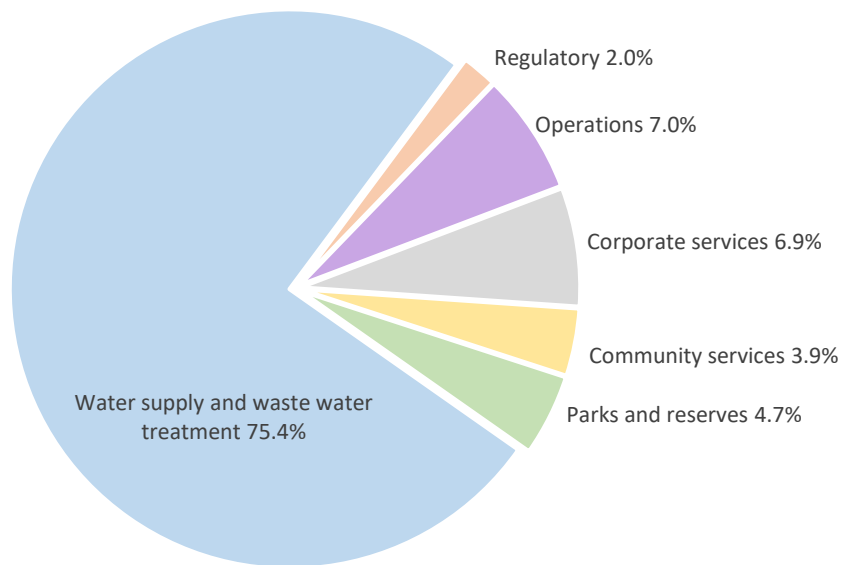


Figure 6: Gross emissions by business unit (%)

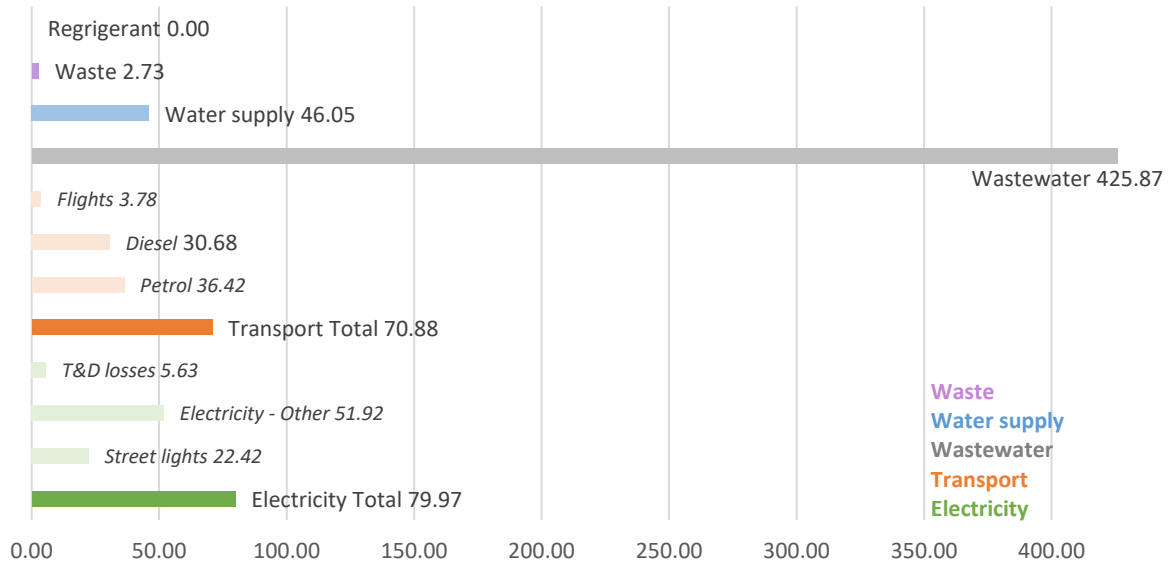


Figure 7: Gross emissions by source (tCO₂e)

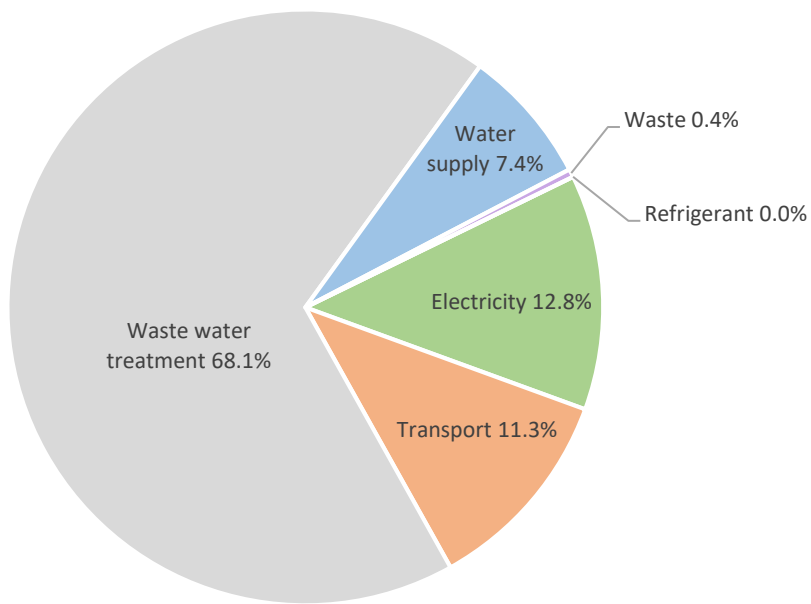


Figure 8: Gross emissions by source (tCO₂e)

6.4 Emissions from biologically sequestered carbon

The following data can be found in a report made by Woodnet (now Forest 360) in 2014. This report makes a list of the forests owned by SWDC. For this greenhouse gas inventory, the only stands considered are the ones owned by SWDC.

In 2019, South Wairarapa District Council owned 76.71 ha of forest, mainly in road reserves but also in the Martinborough Golf.

- Planted forest: 71.84 ha
- Native – tall (84%): 4.09 ha
- Native – regenerating (16%): 0.78 ha

2.29 ha of forest have been deforested in 2019⁴ on Martinborough Golf course and 0.1 ha of forest have been harvested at Hautotora.

		Units	t CO ₂ e	t CO ₂	t CH ₄	t N ₂ O
Planted forest Sequestration	Growth	71.84 ha	-2,428.69	-2,428.69	n/a	n/a
	Regenerating	0.78 ha	-3.98	-3.98	n/a	n/a
Natural forest Sequestration	Tall	4.09 ha	0	0	n/a	n/a
	Planted forest	2.39 ha	2,262.39	2,262.39	n/a	n/a
Harvest emissions	Native forest	0 ha	0	0	n/a	n/a
	TOTAL		-170.28	-170.28	n/a	n/a

Table 14: Total CO₂ sequestered and emitted by forestry in 2019

⁴ This data is an estimation. We compared the surface of forest from the report made by Woodnet and the surface of forest seen on an aerial picture taken the 30th of November 2019 (Google Earth Pro).

7 Liabilities

7.1 GHG stocks held

HFCs, PFCs and SF₆ represent GHGs with high global warming potentials. Their accidental release could result in a large increase in emissions for the reporting period. Therefore, any GHG stocks are included in the greenhouse gas emissions inventory to identify significant liabilities and implement procedures for minimising the risk of their accidental release.

HFCs, PFCs and SF₆ represent GHGs with high global warming potentials. Their accidental release could result in a large increase in emissions for that year, and therefore the stock holdings are reported in this inventory (Table 15: HFCs, PFCs and SF₆ held by).

Source	Amount held – January 2019	Amount held – December 2019	Potential liability
R410-A	10.39 kg	10.39 kg	1.8 tCO ₂ e
R32	2.61 kg	2.61 kg	21.7 tCO ₂ e
TOTAL			23.5 tCO₂e

Table 15: HFCs, PFCs and SF₆ held by SWDC

Because of the difficulty to reach the cooling units, the data doesn't include:

- The units from the main office – 19 Kitchener Street, Martinborough,
- One unit on top the office – 18 Kitchener Street – Martinborough,
- One unit on top of the Featherston library,
- One unit on top of the wall of the Featherston Information Centre.

This units will be included as soon as possible.

7.2 Land-use change

Organisations that own land subject to land-use change may achieve sequestration of carbon dioxide through a change in the carbon stock on that land. If a sequestration is claimed, this also represents a liability in future years should fire, flood or other management activities release the stored carbon.

Land-use change has been included in this inventory. SWDC owns 76.71 ha of forest (71.84 ha of planted forest and 4.87 ha of native forest). The potential liability of the land-use change is 72,137.03 tCO₂e.

	t CO ₂ e	t CO ₂	t CH ₄	t N ₂ O
Carbon emission (deforestation) – Planted forest	68,004.10	68,004.10	n/a	n/a
Carbon emission (deforestation) – Native forest	4,132.93	4,132.93	n/a	n/a
TOTAL	72,137.03	72,137.03	n/a	n/a

Table 16: Potential liability of the land-use change

8 Methodology and references

8.1 Methodology

To do the greenhouse gas inventory, South Wairarapa District Council used the Interactive Workbook made by the Ministry for Environment.

It is possible to download it here: <https://www.mfe.govt.nz/consultation/interactive-workbook-download>

We simply had to input our activity data (such as litres of fuel used, or kWh consumed) in this workbook to measure our greenhouse gas emissions.

This greenhouse gas inventory was made with the factors available in June 2020.

8.2 References

Measuring Emissions: A guide for Organisations – MfE, 2019

The Greenhouse Gas Protocol: A corporate accounting and reporting standard – World Business Council for Sustainable Development and World resources Institute, 2004 (revised)

ISO14064-1:2018. Greenhouse gases – Part 1: Specification with guidance at the organisation level for quantification and reporting of greenhouse gas emissions and removals – International Organization for Standardization, 2018 (revised)

Disclaimer:

The information in this greenhouse gas inventory is true and complete to the best of our knowledge. The calculation method used (MfE workbook and MfE factors), the inclusions and exclusions of this inventory may be different from other inventories and can explain the differences. The author and publisher disclaim any liability in connection with the use of this information.