

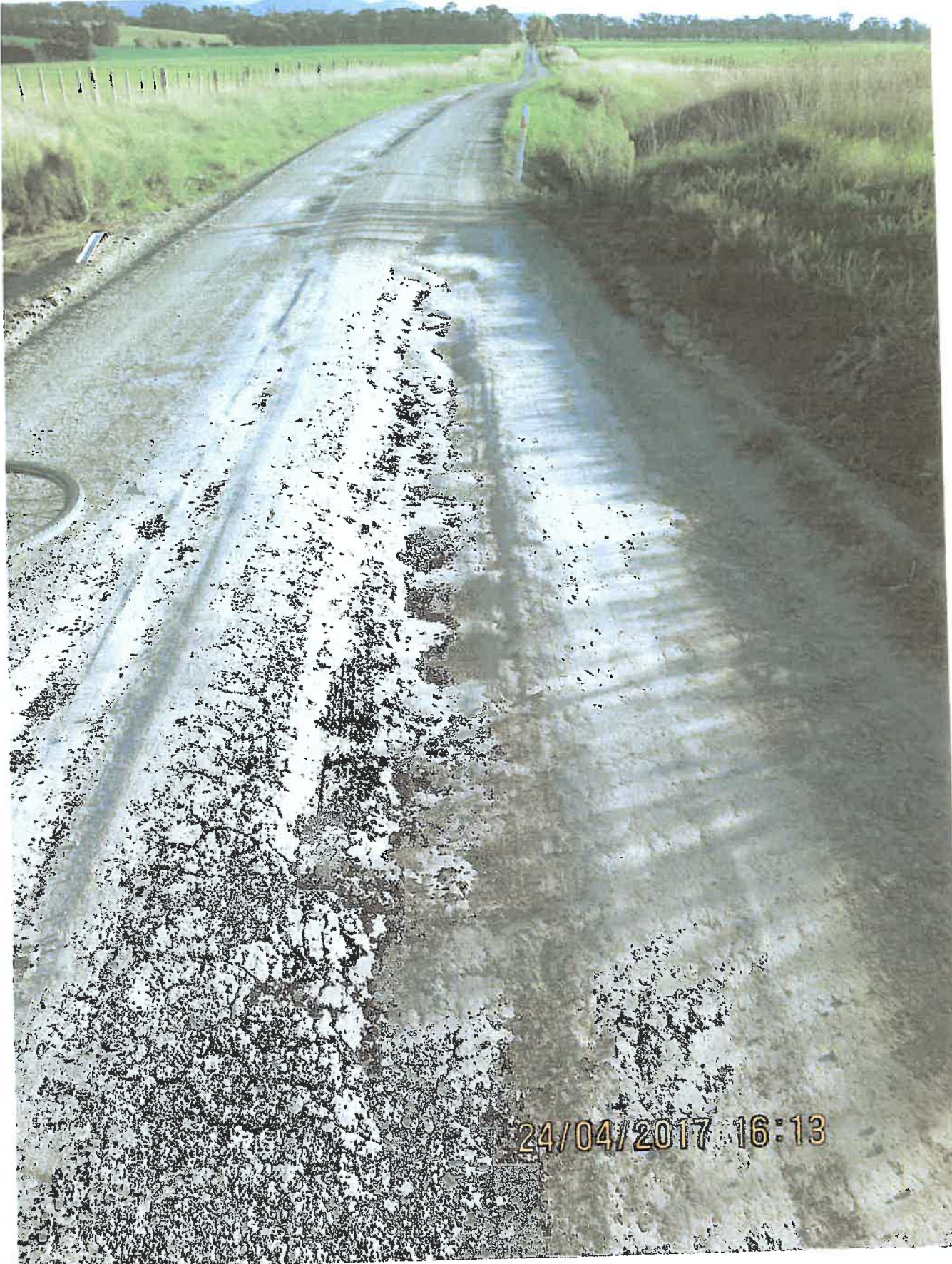
81

tabled



24/04/2017 16:10

Photographs showing state of Shoring Butts Rd.



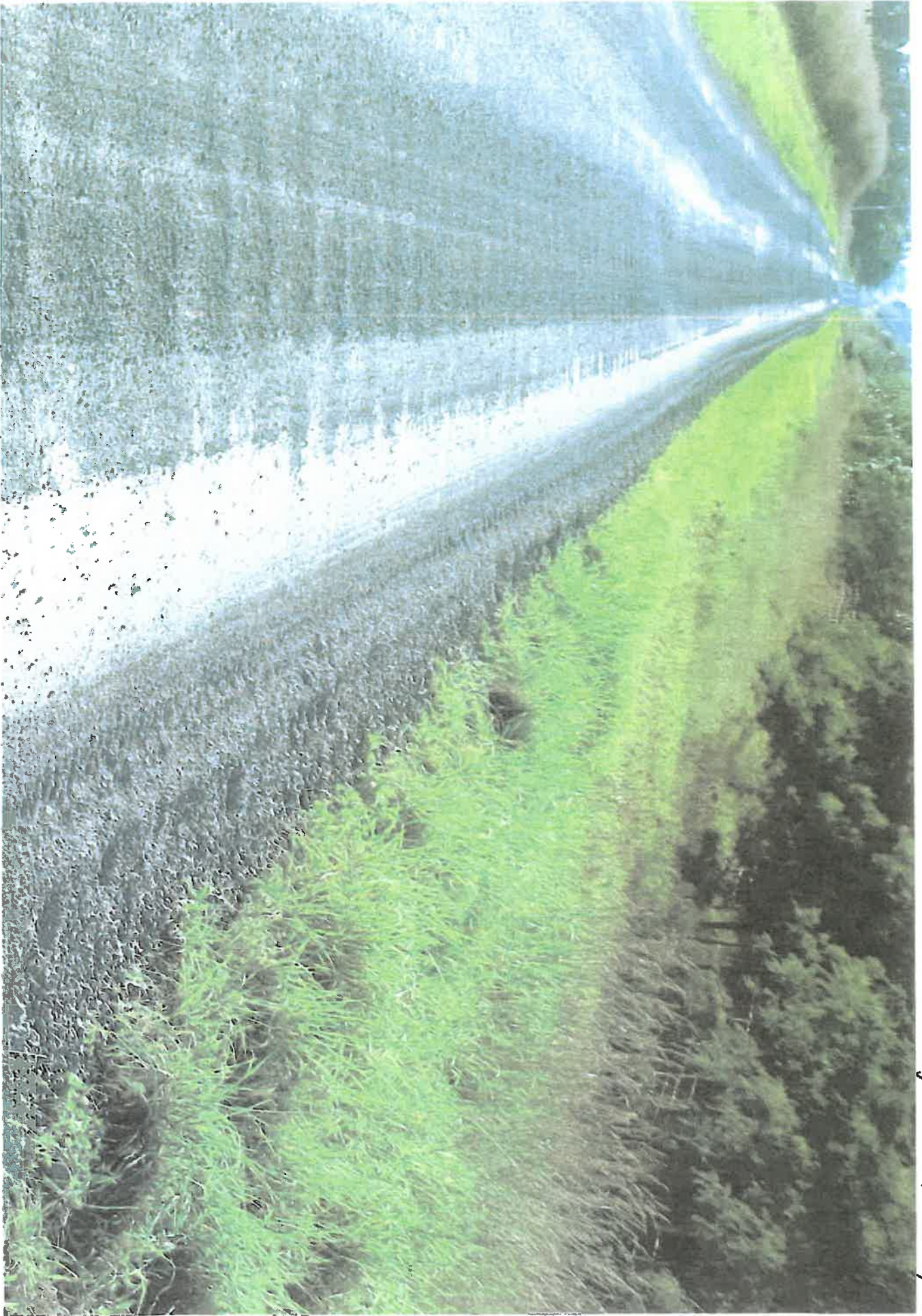
24/04/2017 16:13

Tossed off bike because of potholes



24/04/2017 16:13





Corrugation - impossible for bike riding



Potraker



Holes w. Road.



Potatoes

Wairarapa Road Safety
Council submission
to
South Wairarapa District
Council
31 May 2017



WAIRARAPA ROAD SAFETY COUNCIL

Wairarapa Driver Mentor Programme



The need

Employment: The social sector trial and the National Mayoral Taskforce for Jobs, identified the need to support 'at risk' Wairarapa secondary school students to gain their restricted licences **before** exiting school to reduce barriers to gainful employment in the regions.

Safety Outcomes: NZTA had funded 'communities in need' to set up Community Driver Mentor programmes up until June 2016. It is now up to communities to fund their own programmes and target their 'at risk' and vulnerable road users to obtain better road safety outcomes

Current outcomes

- Social costs @ 2015 'prices':
\$4m (per fatality) & \$760,000 (serious inj)
- Unlicensed young drivers enter the 'justice merry-go-round'
(fines, loss of licence, Police records)
- Inexperienced/illegal/dangerous driving
(crashes, road toll community trauma)
- Nil employment (70% of jobs require a drivers licence)



Intended outcomes

- social costs savings
- licenced drivers (nil Police/Justice interventions)



- safe & responsible drivers (less crashes & DSIs'-less trauma)



- employment (contributing to local economy)



Pilot programme

- Kuranui, Chanel & Makoura colleges 2016-17
- 5 x identified 'at risk' students per college
- 4 x local driving instructors
- a pool of trained/experienced 'mentor' volunteers
- a voluntary coordinator
- 'seed' funding from the 3 Councils to 'kickstart'
- the use of a sponsored car (Southey Honda), free petrol (Caltex Masteron) & free signwriting (The Sign Factory) all donated for use on our programme for the pilot period

What now?

- expand the programme to include Wairarapa College
- purchase a 2nd vehicle (signwriting/petrol)
- pay a coordinator
- support more Wairarapa secondary students to become safer road users and the chance to gain employment BEFORE they leave education



The 'dollars'



- annual cost of 15 students obtaining licence (incl. school coordinators hours) x 4 colleges = \$29,700
- 2nd vehicle = \$10,000
- signwriting = \$ 800
- petrol = \$ 2,400
- vehicle maintenance/servicing = \$ 5,000
- Coordinators costs (10hrspw over 38 weeks) = \$ 7,600
- **TOTAL ANNUAL COSTS = \$55,500**



How to fund it annually

- Masterton District Council \$10,000
- Carterton District Council \$ 5,000

South Wairarapa District Council \$ 5,000

- NZTA \$10,000

- Local funders \$25,500

TOTAL \$55,500



Some of our 'wins'



HEARING

TELEPHONE 0800 327 646 | WEBSITE WWW.FEDFARM.ORG.NZ



To: South Wairarapa District Council
Annual Plan Hearing Panel

Hearing on: **Annual Plan 2017-2018**

Date: 31 May 2017

Presented by: **WAIRARAPA FEDERATED FARMERS**

Address for service: **RHEA DASENT**
SENIOR POLICY ADVISOR
Federated Farmers of New Zealand
PO Box 715, Wellington 4160
P 021 501 817
E rdasent@fedfarm.org.nz

Federated Farmers appreciates the opportunity to present to the hearing panel today.

Representing Federated Farmers today is Ms Rhea Dasent: Policy Advisor for Federated Farmers. I work from the Federated Farmers Wellington office, and am from a farm myself, my family farm is in Hastings District and I am the fourth generation on it.

FEATHERSTON DOG POUND

Federated Farmers opposes the use of a rate targeted only at rural ratepayers to partially fund the new Featherstone dog pound.

We do not consider that the use of a general rate paid only by rural ratepayers reflects direct benefit or use of the pound. We are concerned that farmers will be unfairly subsidising other ratepayers.

We are especially concerned that no other ratepayers in the district are asked to contribute to the pound via rates, even though they will receive as much or more benefit than rural ratepayers.

Rural Benefit

Rural ratepayers will not derive a greater benefit from a new pound than other ratepayers, that justifies their contribution to funding.

On the whole, farmers value and manage their dogs well, and dog management is a self-regulating aspect of farming. Dogs are part of the family, and a valuable asset to the farm business. It is in a farmers' best interest to manage their dogs. Farmers spend many hours training their dogs, and bad

behaviour like being aggressive to animals or people is dealt with quickly. Farm dogs are contained in their kennels or chained up at night, and because of the large size of farms, dogs are contained on the property, they do not roam the streets, and barking rarely annoys the neighbours. If a dog does stray, neighbours are quick to recognise the dog and call the owner.

Federated Farmers member Roger Barton, who has had a keen interest and involvement in dog management in Wairarapa, has spent 36 years as a South Wairarapa ratepayer, and has never personally needed the services of dog control. He considers that it is very rare for a working farm dog to require action by the Council, or the services of the pound. This also reflects my personal experience with rural dogs.

We see that there were 336 complaints about dogs and 154 infringement notices issued in the 2015-16 year. Federated Farmers asks the Council how much use of the pound is made by rural or farm dogs.

General Rate

Federated Farmers considers that the use of the general rate as a mechanism is also inequitable.

Not only is there a discrepancy between what rural ratepayers contribute to the pound (30%) and what other ratepayers contribute (0%) but the use of the general rate struck on land value creates a discrepancy between rural ratepayers as to their individual contributions.

The nature of a general rate struck on land value means that ratepayers with high LV properties will be paying more than lower LV properties. This is regardless of benefit.

Some of these rural ratepayers may not even have a dog, and if they happen to have a high land value property, will be paying a disproportionate amount.

Public Benefit

Federated Farmers understands and agrees that there is an element of public benefit derived from a pound. We all benefit from wandering dogs being removed from the streets, or dangerous dogs impounded.

Federated Farmers recommends that instead of funding 30% of the activity by the rural general rate only, that a district-wide uniform charge is applied. Combined with funding by licences, and district-wide targeted uniform charge will reflect the proportionate level of benefit received by dog owners and the community at large.

The UAGC is the obvious mechanism to use as it applies to all ratepayers, reflecting this general public benefit.

We are disappointed to see that the UAGC is proposed to reduce from \$526 down to \$501 in the year ahead, this indicates to us that there is still ample scope within the legislative 30% to use the UAGC for activities like the pound. With about 5,846 ratepayers in the district, only \$6 from each ratepayer is needed to provide 30% of the one-off cost of \$120,000, given that 70% is to be funded by licence fees.

ROADING

Federated Farmers asked the Council to consider moving to a hybrid funding model for roading in next year's Long Term Plan.

The hybrid model will consist of a targeted uniform charge as an equal amount paid by all ratepayers in the district, as well as the general rate applied with the existing differentials.

Nearby Masterton District uses a hybrid model, using a differential targeted roading charge on each separately used or inhabited part of a rating unit, and land value roading rate collected on a differential basis with three categories.

The estimated roading charge for 2017/18 will be:

U1 & U2	\$ 49.00 per part of rating unit raising \$ 443,000
R1	\$314.00 per part of rating unit raising <u>\$1,171,000</u>
	Total \$1,614,000

The Roading charge will be used to fund a portion of the roading costs allocated to each wards as per the Revenue and Financing Policy.

For the Council's benefit, here is the Masterton roading rate numbers:

Roading Rate – estimated per dollar of Land Value for 2017/18 will be:

U1 (0.002136 per dollar of land value) raising	\$1,693,000
U2 (0.004272 per dollar of land value) raising	\$ 665,000
R1 (0.001786 per dollar of land value) raising	<u>\$2,721,000</u>
Total	\$5,079,000

The three differential categories are:

- U1 – Urban residential
- U2 – Urban non-residential
- R1 – Rural.

We urge the Council to consider a hybrid road funding model.

Federated Farmers thanks the South Wairarapa District Council for considering our submission to the Draft Annual Plan 2017-2018.



SOUTH WAIRARAPA DISTRICT COUNCIL'S LONG TERM PLAN 2015/2025

Group of Activities, and Activity	Community Outcomes	user/beneficiary pays principle	intergenerational equity principle	exacerbator pays	costs and benefits	Private	Public	Rationale	Operational	Funding Sources	Capital
Governance/Leadership/Advocacy											
Representing the community	Vibrant and strong communities Sustainable South Wairarapa	NIL	NIL	L	L		100%	The democracy process is available to all residents and ratepayers, therefore all ratepayers benefit from this activity	General rate & reserve funding		
Public Protection											
Protection of public health		M	NIL	M	M	70%-80%	30%-20%	Council has a statutory obligation to enforce public health legislation	Fees & Charges General Rate		
Noise control and enforcement		NIL	NIL	H	L	10%	90%	Council has the ability to charge for monitoring and recover other costs	Fees & Charges General Rate		
Building consents and enforcement		H	NIL	L	M	80%-90%	20%-10%	Council has statutory obligation to enforce the building act	Fees & Charges General Rate		
Dog and animal control	Healthy & economically secure people	L-M	NIL	H	L	60%-70%	30%-40%	For dog control the urban community receive a higher benefit than the rural community while for animal control the rural community receives a higher benefit than the urban	Fees & Charges General Rate		
Liquor licensing		H	NIL	L	L	70%-80%	30%-20%	Council has a legal obligation to enforce liquor act	Fees & Charges General Rate		
Emergency management and civil defence		NIL	NIL	L	H	0	100%	Emergency management is for the protection of life and restoration of essential services	General rate		
Rural fire		M	NIL	H	M	75%-85%	25%-15%	Council has a statutory obligation to fund combined rural fire activity	Targeted General rate		
Community Development											
Cultural and community development		L	NIL	NIL	H		100%	Supporting community activities for which council believes there is a high public benefit	General rate Targeted rate		
Economic Development	Vibrant and strong communities Sustainable South Wairarapa	NIL	NIL	NIL	L		100%	Economic development provides a benefit of the district, but there are occasions where parts of the district benefit to a different degree	General rate Targeted rate		
Economic Development - Tourism		M	NIL	NIL	M	60%-70%	40%-30%	Tourism is a very important part of economic activity within Swai therefore has a high public good. However the benefit received from tourism develop also directly benefits the tourist related businesses	General rate Targeted rate		
Resource Management											
Educated and knowledgeable people											
Vibrant and strong communities											
Sustainable South Wairarapa											
Distinct Plan (reviews and development)		L	NIL	M	L	5%	95%	DP is a strategic and statutory planning document for the benefit of the district however members of the community can apply and fund a private plan change	General rate, fees and charges, reserves short term loans (1-3 yrs)		
Resource consent applications		H	NIL	H	H	95%	5%	Element public good for enquiries, and consents that have a high public interest	General rates, F & C surpluses		
Resource consent appeals		H	NIL	H	L	50%	50%	Appeals potentially cover a wide range of effects and have a wide range of benefits	General rates / surpluses		

Group of Activities, Community Outcomes and Activity	user/beneficiary pays principle	intergenerational equity principle	exacerbator pays	costs and benefits	Proposed		Rationale	Funding Sources	
					Private	Public		Operational	Capital
Amenities									
Parks and Reserves including playgrounds	L	H	M	M		10%-15%	Reserves are there for recreational purposes and are open to all without restriction except for specific areas and times	Targeted rates, fees and charges	Targeted rates, surplus funds & Loans
Swimming Pools in Featherston, Greytown and Martinborough.	H	M-H	L	L		30%-40%	While pools provide recreation value council can restrict access	Targeted rates, fees and charges	Targeted rates, surplus funds & Loans
Ownership of Camping Grounds in Martinborough and Greytown.	H	M	L	L		70%-85%	Martinborough is a restricted area and Greytown is unrestricted however council may in the future may look at options for Greytown	Targeted rates, fees and charges	Targeted rates, surplus funds & Loans
Civic Amenities									
Libraries in Featherston, Greytown and Martinborough.	H	L-H	L	M		30%-40%	This activity provides public benefit by increasing people's knowledge, but also provides a private benefit.	General rate, fees & charges	General rates, surplus funds & Loans
Pensioner housing units in Featherston, Greytown and Martinborough.	H	M	L	L		95%	There is high private benefit by the tenants and council provides this facility for the wellbeing of a select number of the community	Fees & charges	Surplus funds & loans
Public toilets in Featherston, Greytown and Martinborough, and at various rural and coastal sites.	H	M	H	M		80%-90%	Providing essential service to ensure a clean environment	Targeted rates	Targeted rates, surplus funds & Loans
Public halls, Sports Stadium in Featherston, Greytown and Martinborough.	M-H	M	M	L		40%-60%	Halls while used for private benefit there are wider community benefits of having halls available. Halls are the focal point of the community	Targeted rates, fees and charges	Targeted rates, surplus funds & Loans
Cemeteries in Featherston, Greytown and Martinborough.	H	H	L	L		90%	Can restrict access and there are alternatives, providing service to public there are benefits from memorial status	Targeted rates, fees and charges	Targeted rates, surplus funds & Loans
Roading / Land Transport									
	H	H	H	H		70%-80%	Road corridor provides high public good however the use of the road is predominantly for private benefit purposes	Fees & charges, NZTA subsidy, tolls, contributions, General Rates	Surplus funds, NZTA subsidy, tolls, contributions, general rates
Solid Waste Management									
Waste collection	H	L	H	M		30%-20%	Service provision public benefit by keeping the district clean	Fees & Charges, targeted rates	Surplus funds, targeted rates and loans
Closed Landfill	NIL	M	L	L		100%	Protect environment from impacts of previous events	General rates	General rates, surplus funds & Loans
Transfer stations	H	L	H	M		70%-80%	Service provision public benefit by keeping the district clean	Fees & Charges, targeted rates	Surplus funds, fees & charges, targeted rates and loans
Recycling	H	L	H	M		70%-80%	Service provision public benefit by keeping the district clean	Fees & Charges, targeted rates	Surplus funds, fees & charges, targeted rates and loans

Group of Activities, Community Outcomes and Activity	user/beneficiary pays principle	intergenerational equity principle	exacerbator pays	costs and benefits	Proposed		Rationale	Funding Sources	
					Private	Public		Operational	Capital
Stormwater									
Healthy & economically secure people Sustainable South Wairarapa									
Stormwater Collection	H	H	H	L-M	20%	80%	Collection predominantly to prevent flooding of private and public property	Fees & Charges, targeted rates, general rates, surplus funds and loans	Fees & Charges, targeted rates, general rates, surplus funds and loans
Stormwater Treatment	L	H	H	L-M	5%	95%	To protect the environment	Fees & Charges, targeted rates, general rates	Fees & Charges, targeted rates, general rates, surplus funds and loans
Water Supply									
Healthy & economically secure people									
Provides safe potable drinking water	H	H	H	M	90%	10%	Provides safe potable drinking water	Fees & Charges, targeted rates, contributions, surplus funds and loans	Fees & Charges, targeted rates, contributions, surplus funds and loans
Sewerage									
Healthy & economically secure people Sustainable South Wairarapa									
Provide safe/sanitary treatment & disposal environment for waste	H	H	H	M	75%	25%	Provide safe/sanitary treatment & disposal environment for waste	Fees & Charges, targeted rates, contributions	Fees & Charges, targeted rates, contributions, surplus funds and loans