

# Featherston WWTP Consent

## MONTHLY REPORT

### 30 July 2022



#### PROJECT OBJECTIVES

1. To obtain consent approval for upgrading the Featherston wastewater treatment plant (WWTP) to improve effects on the existing receiving environment, and
2. To determine the suitability of a transition to a land-based wastewater disposal system in the future.

## Project Summary

### Reporting period 1 to 30 July 2022

The new governance for the project was initiated this month, with the Governance Group and Project Steering Group meetings held.

An initial pre-application meeting with Greater Wellington Regional Council was held. The project team gained a better understanding of GWRC's expectations. GWRC indicated that it would not look favourably towards another extension of time to complete the consent and allow the continuation of the discharge from the treatment plant.

Environmental monitoring commenced and the draft communications strategy is under review.

## Heath, safety, environment & quality

- General H&S Status  
A Health and Safety Plan has been prepared for the upcoming environmental investigations.
- General Environmental Status  
The treatment plant is continuing to discharge as permitted.
- General Quality  
Legal review of consent strategy completed

## July project activity

### Project Management

Formal approval of PMP received.

Governance Group and Project Steering Group Meetings held, and terms of reference confirmed and clarified.

### Communications

Draft Communications Plan has been prepared and reviewed by WWL and is currently with SWDC for review.

### **Consent**

Completed Consenting Strategy Memo in preparation for the pre-application meeting with GWRC. Pre-application meeting held with GWRC on 29/07/2022. GWRC specified the following as their key requirements for the next meeting:

- timeline of treatment plant upgrades and how these link to the proposed environmental monitoring plan, and
- how the data collected is anticipated to support the acceptability of the consent application

### **Design**

MBBR trial extended a further two weeks to provide further insight to guide the full-scale design, this will now conclude in early August.

Data analysis of flow data showed high levels of inflow and infiltration levels (I&I). This may impact the ability to reduce the flow volume discharges into Donald's creek.

Research and information put together for subsurface wetland design.

Drone surveyor engaged to inform the detailed design of any treatment plant outlet upgrades.

### **Environmental**

Confirmed that data from existing weather station is usable.

Installed telemetry on bridge for monitoring flows in Donald's Creek

Environmental investigations planning for mobilisation first week of August.

Ecological investigations (including wetland survey) scope confirmed.

Receiving Environment Monitoring Plan drafted and being reviewed by GHD Lead.

## **Next month**

### **Project management**

Oversee workstream activity, organise placeholder invites for future GWRC pre-application meetings.

### **Communications**

Finalise and seek formal approval of Communications Plan from SWDC and organise communications content and activities.

### **Consent**

Seek SWDC's feedback on Consenting Strategy and continue to discuss scope of technical inputs with our project specialists.

### **Design**

Seek SWDC's feedback on Consenting Strategy and continue to discuss scope of technical inputs with our project specialists.

### **Environmental Investigations**

Mobilise for soil sampling, surface water sampling, and groundwater sampling.

Complete installation of flowmeter and mobilise for ecological investigations.

## Stakeholder Management



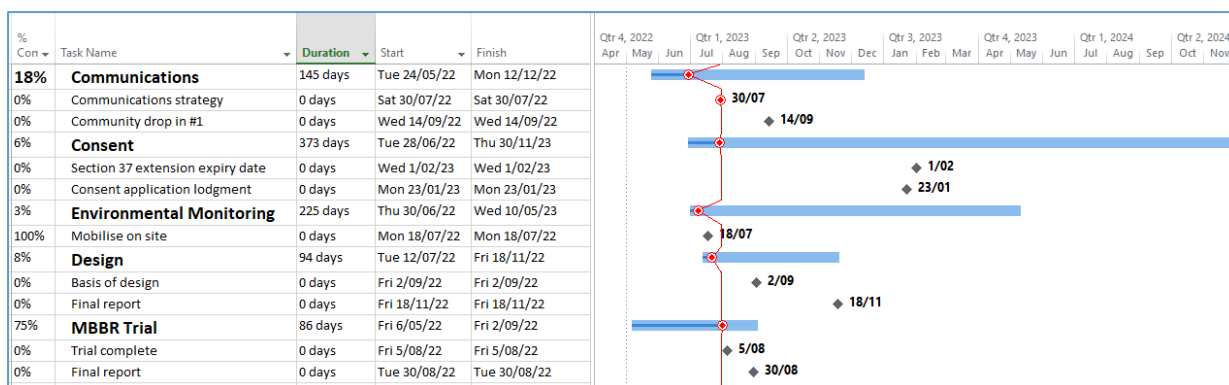
Stakeholder	Relationship	Issues
GWRC Environmental Regulation	Ongoing meetings to collaborate on the preferred options.  This month: First pre-application meeting held. Better guidance provided on what they want to see presented in future meetings.	Issues were raised around understanding if there is legal framework that will allow operation of the plant post 1/02/2023.
Māori Standing Committee	This month: Chair appointed to be part of the Governance Group.	
Tangata Whenua	Open working relationship, keen to be involved in wetland designs  This month: WWL and SWDC direct contact with iwi representatives.	Keen to see Donald's Creek water quality improved promptly. If trials and co-design is being carried out, wants to see this managed effectively.
SWDC Councillors	No updates this month	Progress and feasibility of shortlisted options
SWDC officers	Monthly Governance Group meetings and bi-weekly Project Steering Group meetings.	Affordability of the shortlisted options Consentability concerns
Regional Public Health	No updates this month	
Fish and Game	No updates this month	
Department of Conservation	No updates this month	
Featherston Community Board	No updates this month	
Adjacent landowners	No updates this month	

## Programme timeline



We are behind programme with the communication strategy and were delayed with establishing environmental monitoring on site. These delays are expected to be recovered as work progresses in these workstreams.

We are forecasting to meet the deadline for consent application at the end of January 2023.



## Key critical path activities

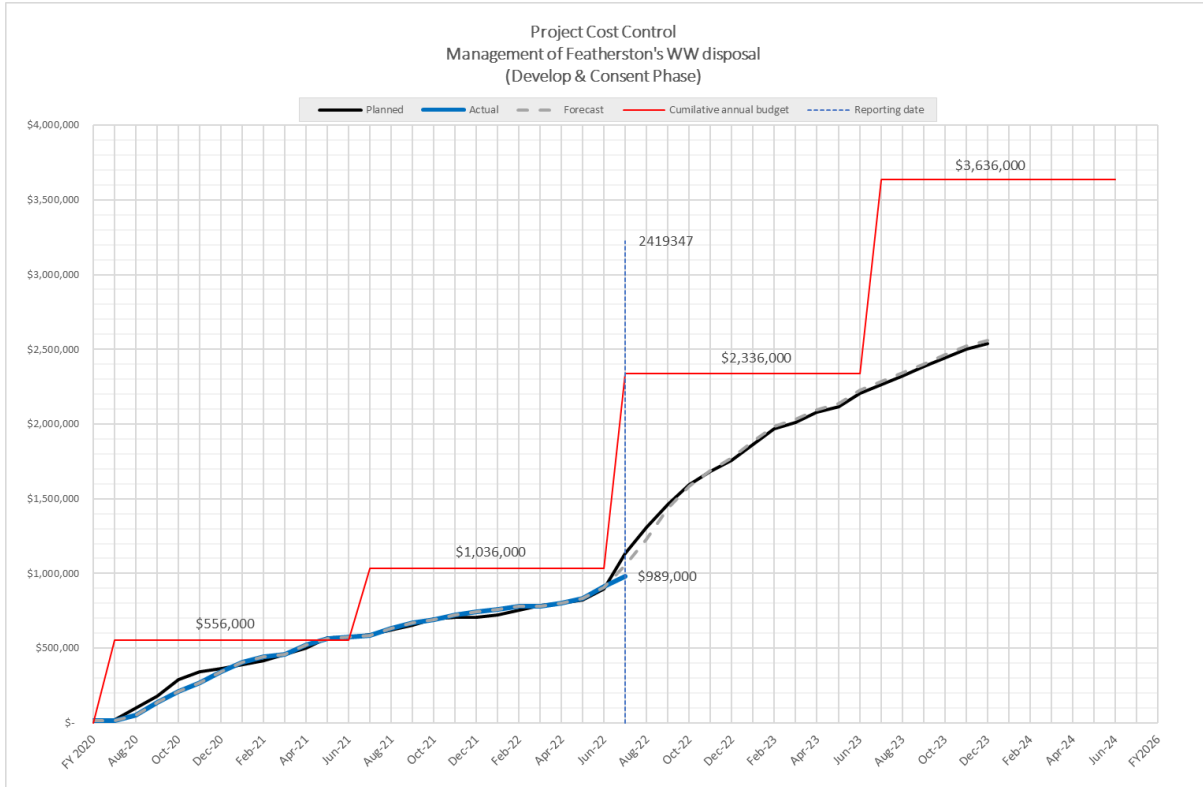
Key Activity Status	Due Date	Progress	Expected/Actual Completion
Communications Strategy	30/7/22	This work is late. Reviews with SWDC underway and collateral is being developed in parallel to manage programme impact	20/8/22
Community drop in #1	14/9/22	Work is underway preparing for this	14/9/22
MBBR trial report	15/7/22	The trial was extended until early August, the revised date does not affect programme but any further delays will	30/8/22
Basis of design report	2/9/22	Work is underway, MBBR raw data available to inform	2/9/22
Draft AEE report complete	14/11/22	Environmental monitoring to inform this is underway	14/11/22
Final AEE	21/1/23		21/1/23
Lodge short term consent	23/01/2023	This is the hard deadline on the schedule.	23/01/2023

## Project Expenditure



2022/23 budget is \$1.3m.

The budget is behind forecast due to the delays with programme and mobilising environmental monitoring.



## Contingency

There is \$300,000 budgeted contingency for this phase

Activity	Cost	Remaining contingency

## Scope change



Nothing to report

## Risk Management



Current top 5 risks

ID #	Risk Description & Consequence	Initial Rating	Mitigation	Rating
23	<p>Risk of missing the Section 37 deadline of Feb 23</p> <p>There is a short amount of time to prepare the consent application and consult with key stakeholders before submission. This is cause by not obtaining endorsement to proceed with the project.</p>	High	Follow PMP and drive discussions with GWRC to demonstrate progress.	Medium
19	Budget limitations / Affordability (High I&I adds to this risk)	High	Clear limitations in place, improvements prioritised to meet this	High
4	There is a risk that if partners or stakeholders have a significant objection to the project or specific detail of the project, then additional work may be required to understand and resolve these issues or alternatively resulting in a shorter-term consent.	High	Regular meetings with key stakeholders via the Project Governance.	Medium
20	Regulatory / RMA changes	High	Legal and planning teams staying up to date with future changes. Consent strategy being developed with future RMA changes considered.	Medium
18	Level of Iwi engagement	High	Early and regular engagement. Co-design on elements of proposal i.e. wetland	Medium

## Issues



ID #	Escalation Issue	Action	Action party	Date Required	Ranking (Low, Med, High)	Status
3	High I&I	Analyse impact of high I&I readings to our ability to meet conditions for Discretionary activity	GHD	August	High	Open

## Early Warnings

- Additional scope with budget implications for the following:
  - additional mobilisation activity for soil sampling and permeability tests (due to wet weather) may be required
- Delays to programme
  - The wet weather has delayed mobilising the environmental investigations. This means that there will be less data available for the consent submission. There is a risk that if sufficient data is not collected prior to January lodgement date, the lodgement could be delayed.
- I&I impact to design feasibility
  - The I&I issue will potentially impact the feasibility of a short-term or long-term plant upgrade. We are working with the wider Wellington Water team to understand the issue and possible mitigations or solutions for the consent.
- Materials and Labour shortages and costs
  - There is a national shortage of people and materials estimated to be up to 30% in the construction sector. As we move into construction phase we are expecting the costs estimates to increase.