

Martinborough and Greytown Wastewater Treatment Plants

Joint Community
Liaison Group
3 September 2024



Our water, our future.

Compliance



Draft 2023-24 Annual Compliance Reports indicate WWTPs will be non-compliant.

Non-compliances will be addressed in the upgrade projects, or via other work programmes underway internally (discussed further on next slide).

Ongoing investigation into discrepancy between inflow and outflow measurement.

Greytown's 2023/2024 irrigation season was successful with >73,500m³ treated effluent discharged to land. Significant operational achievement that meets the intention of the Stage 1B consent for Greytown WWTP.

Growth-Capacity Studies



Both WWTPs are operating beyond their design treatment capacity as a result of the number of people connected to the plants now.

WWL has therefore advised SWDC to pause new connections at the Martinborough & Greytown WWTPs.

WWL has commissioned a study to determine what treatment capacity upgrades can be implemented at the plants.

This study will be completed in early 2025; SWDC will use the study to decide what level of growth they wish to enable in the respective WWTP catchments.

These capacity upgrades must be considered within the conditions & intention of the resource consents.

Martinborough Abatement Notice

- Wellington Water have been working to address three To-Do Abatement Notices – issued 15 August 2023:
 1. Desludging Ponds – **On track**
 2. Influence Flow & Quality monitoring - **Complete**
 3. UV Investigation and Implementation - **Complete**
- Wellington Water and SWDC have been working closely with GWRC to provide regular progress updates over the past 12 months.

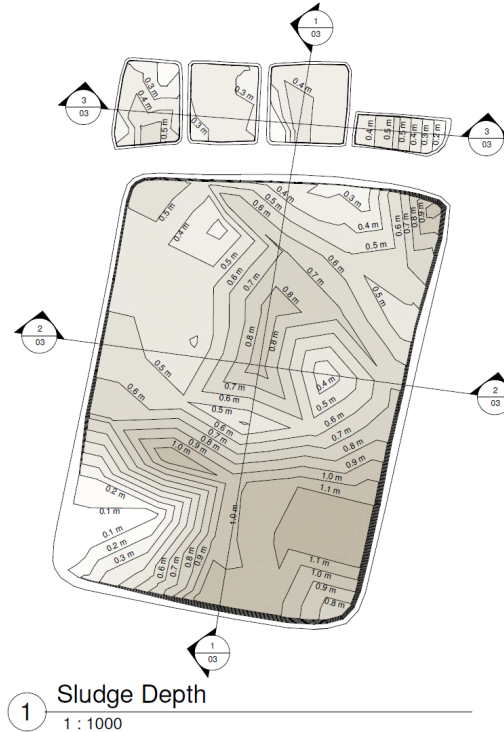
Project update: MTB & GTN Compliance Upgrades

1. Desludging Ponds - On track

- Sludge survey's for Martinborough and Greytown were completed in March.
- Updated work programme submitted to GWRC, for completion date April 2025 (Martinborough). Greytown WWTP would immediately follow.
- Desludging Design Report has been completed, and approved. Outlines the sludge removal quantities and Geobag laydown areas required.
- An open-market tender is due for release September.
- Contract award and construction commencing on laydown areas from October 2024.
- Desludging activities to commence immediately following Christmas shut-down period.
- Greytown WWTP ponds desludging to immediately follow: April/May.

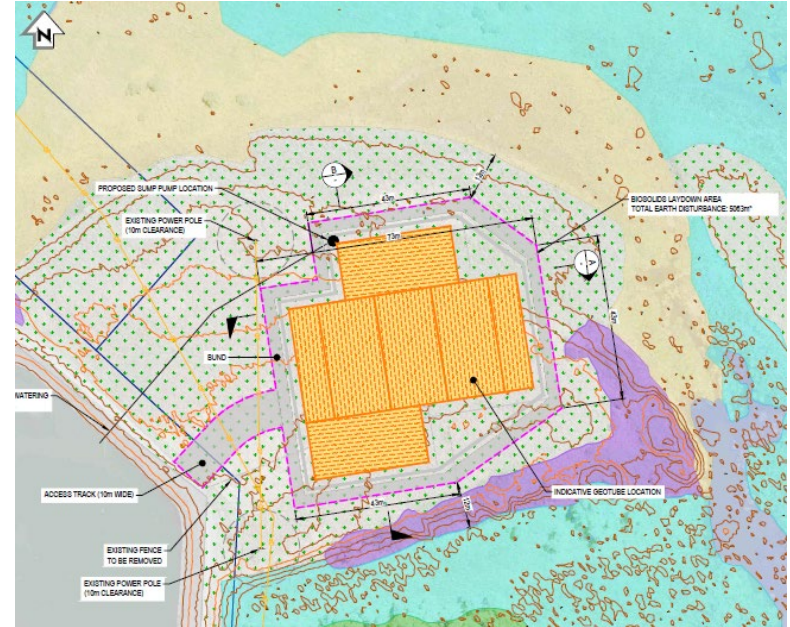
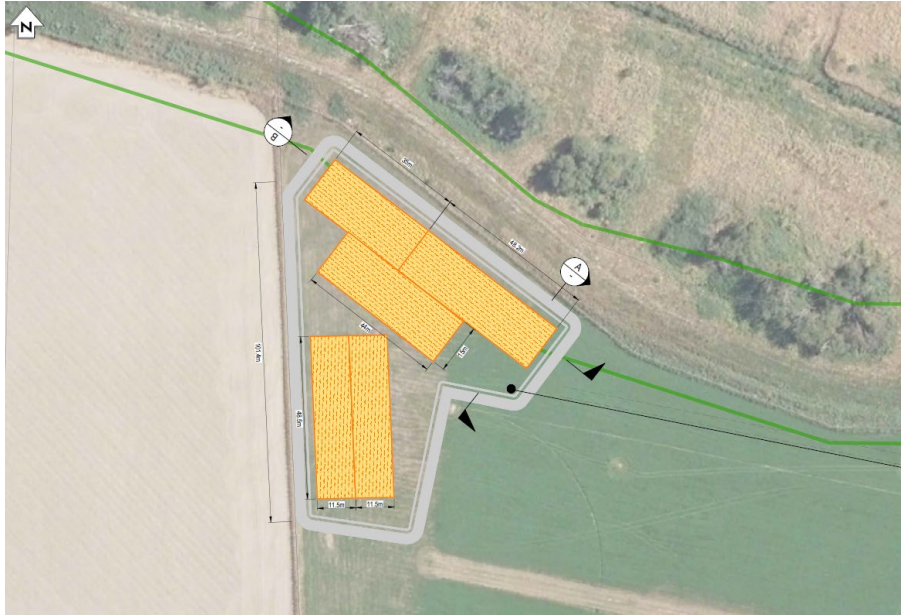


Project update: MTB & GTN Compliance Upgrades



Martinborough sludge survey results

Project update: MTB & GTN Compliance Upgrades



Proposed Geobag laydown areas

Project update: MTB & GTN Compliance Upgrades

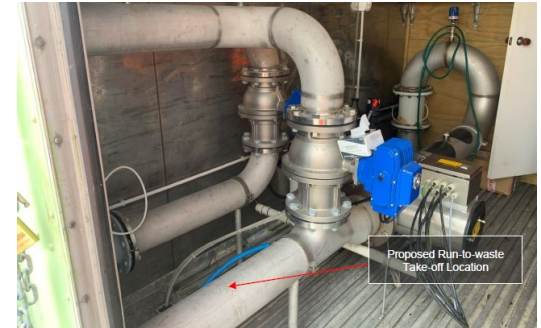
2. Influent Flow & Quality Monitoring - Complete

- Influent monitoring and sampling programme is ongoing.
- Preliminary data analysis complete, feeding into development of future design upgrades (Pump station upgrades, Stage 2a Pain Farm irrigation system)



3. UV Investigation and Implementation – Complete

- UV Sampling and data analysis completed.
- Preliminary identification of UV run-to-waste to address operational high temperatures. Need to reassess upon post-desludging sampling.

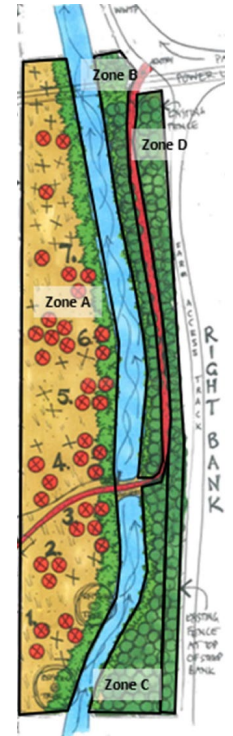
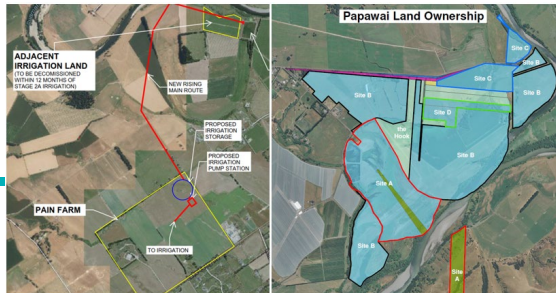


Project update: MTB & GTN Compliance Upgrades



Whats coming up?

- Engagement with Iwi on Mana Whenua Values Monitoring Plan.....ongoing
- Influent monitoring & sampling programme.....April 2025
- Desludging Martinborough WWTP ponds.....April 2025
- Desludging Greytown WWTP ponds.....June 2025
- Martinborough WWTP UV Optimisation works.....June 2025
- Riparian Planting Greytown WWTP.....commencing FY24/25
- Stage 2A Land Irrigation Works (investigate, plan & design).....ongoing
 - ❑ Secure funding through SWDC Long Term Plan 2025-34



Thank you



Any final clarifications?