

SOUTH WAIRARAPA DISTRICT COUNCIL

8 AUGUST 2012

AGENDA ITEM C3

MARTINBOROUGH SQUARE RESERVE – APPROVAL OF MANAGEMENT AND DEVELOPMENT PLAN

Purpose of Report

To obtain approval for the management and development plans for Martinborough Square Reserve, Martinborough.

Recommendations

Officers recommend that the Council:

1. *Receive the information.*
2. *Approve the management plan and development plan for Martinborough Square Reserve as detailed in Appendix 2 and in section 2.2 of this report.*
3. *Recommend that the approved management plan be sent to the Minister for the Environment for approval under s41 of the Reserves Act 1977.*

1. Background

Martinborough Square (known as The Square) is situated in the centre of Martinborough and is the central hub of Martinborough's distinctive Union Jack road layout. The Square includes Ohio, Strasbourge, Cork, and Naples Streets, most of the block that holds the Town Hall and the Museum, and Memorial Square which is the grassed and treed area in the centre.

The Square is also the central point for regular large-scale events such as the Martinborough Fair and Toast Martinborough, which extend beyond Memorial Square to include the main streets of The Square. While these events bring large numbers of people to Martinborough and have a positive spin-off for the local economy, they can put pressure on The Square so it is important that it is carefully managed.

The South Wairarapa District Council has worked with key stakeholders and with the help of landscape architects Boffa Miskell has prepared a draft management plan and draft development plan that reflects the needs of the community and identifies actions that can easily be translated into on-the-ground works. The management plan should be read in conjunction with the development plan, which contains a visual representation and a list of

the proposed works. Together the two plans will ensure ideas can be translated into actions.

2. Discussion

2.1 Feedback on the draft plans

Initial community consultation on the draft management and development plans was undertaken from 1 July 2011 to 5 September 2011. The drafts were available in the Martinborough library, key stakeholders were sent a copy of the draft, and there were articles in the local newspapers.

Two things happened in September 2011 to delay the review process. First, it became apparent after receiving submissions that the management plan needed to be more robust and should be re-written. Second, the future of the Martinborough Town Hall building was to be put out for public consultation in October/November 2011. Addressing the Town Hall area as part of the Reserve management and development plans would then be very confusing. Therefore, to avoid unnecessary conflict between the two consultation processes, the management and development plans were changed significantly and specific reference to the Town Hall was removed.

These new draft management and development plans were then put out for another round of public consultation from 21 March 2012 to 30 May 2012.

In total, and from both consultation periods, thirty-six (36) submissions were received generally supporting the draft plans. A summary of submissions is attached as Appendix 1.

A hearing by the Reserves Working Party was held on 4 July 2012 to hear submissions on the draft plans. Eight submitters were heard and as a result the Reserves Working Party recommended some changes to the documentation. The Working Party has recommended that Council adopt the plans with recommended changes.

2.2 Recommended changes to the draft plans

The Reserves Working Party considered the draft plans and the submissions and recommended some changes.

Recommended changes to the management plan are shown on the tracked-changes version of the plan attached as Appendix 2.

Recommended changes to the draft development plan are as follows:

- Interpretation, Tree Grates and Lighting page: Remove reference to the information panel and instead refer to historical information being on plaques or similar and placed on existing structures (seats, footpath, buildings).
- Interpretation, Tree Grates and Lighting page: Change the picture of the tree guard to reflect the existing guards in use around the Reserve.
- Boer Memorial page: Change item 3 to read "Plinth to memorial to be replastered and the light to be replaced with the original or a suitable replica."

- Boer Memorial page: Delete reference to flowers and change item 2 to read "...and ensuring safety. Roses will be replaced with low perennial shrubs. The 3 remaining Peace Roses will be moved to their own dedicated garden."
- Item 4 on the Boer Memorial page: Change to read "...focus at night, where colour filters will be used only on special occasions."
- Promenade page: Change to show no widening of the promenade area, but that the promenade will be upgraded with existing paving (asphalt and brick).
- Item 3 on the Promenade page: Change to read "...draw people into the square. Annuals will be planted at each pedestrian crossing."
- Add item 5 to the Promenade page: "Plant one native tree in each quadrant of Soldiers Memorial Park, with a plaque for each to commemorate the four original Martinborough settlers."
- Design Elements page: Replace the wide seating example with one of light coloured wood.
- Change all instances of the name "Memorial Square" to "Soldiers Memorial Park".

Changes approved by the Council will be incorporated into the draft management and development plans (Appendix 2) to create the final Martinborough Square Reserve Management and Development plans.

3. Conclusion

While there were some delays to the review process in general, the management and development plans for Martinborough Square Reserve have been a successful in terms of engaging with the community. The approval of the plan by the Council will enable officers and the community to prepare a work programme to begin implementing the development plan.

The key to the continued success of the project will be to ensure that the Council and the community uses the plan as a basis for work in the park and implements the plan as resources allow.

4. Appendices

Appendix 1 – Summary of Submissions on the Martinborough Square Reserve Management and Development Plans

Appendix 2 – Martinborough Square Reserve Draft Management Plan (with tracked changes) and Draft Development Plan

Prepared by: Jen Olson, Resource Management Officer

Reviewed by: Glenn Bunny, Group Manager Planning & Environment

Appendix 1 – Summary of Submissions on the Martinborough Square Reserve Draft Management and Development Plans

SUMMARY OF SUBMISSIONS

Martinborough Square Reserve Draft Management & Development Plans

No.	Name/group	Summary 1st round submissions	Summary 2nd round submissions	Officer Comments	Recommendations
1	Richard Airey	<p>Replace the original light on the Boer Memorial.</p> <p>Support changes to the WWII memorial.</p> <p>Soften the Town Hall & surrounds and link it to square.</p> <p>Tree maintenance is essential and needed to visually open up the square.</p> <p>Suggest that picnic tables and seats could be sponsored with an appropriate plaque.</p>	<p>Support relocating the old Courthouse, but suggest the toilet block is nearer or adjacent to the Town Hall.</p> <p>Support an active programme of annual assessment and maintenance of the trees.</p> <p>Recommend the management rules (sec 7.3) are enforced at all times.</p>	<p>Accept replacing the Boer memorial light.</p> <p>Comments about the Town Hall no longer apply to this plan.</p> <p>Accept tree maintenance, which is addressed in section 6 of the Draft Management Plan.</p> <p>Council does not have an appropriate mechanism in place to allow plaques.</p> <p>New toilets will not be placed near the Town Hall as they need to be more central.</p> <p>Enforcement request is noted.</p>	<p>Add "Replace the Boer memorial light" to the Boer War Memorial section of the Draft Development Plan.</p>

SUMMARY OF SUBMISSIONS

Martinborough Square Reserve Draft Management & Development Plans

No.	Name/group	Summary 1st round submissions	Summary 2nd round submissions	Officer Comments	Recommendations
2	David Bull (Chair, Martinborough Tree Committee)	<p>Match paving and tree guards to those used around the square in the last decade.</p> <p>Oppose planting trees around the promenade.</p> <p>The promenade area should have rural values rather than city park designs.</p> <p>Recommend asphalt with brick edging for consistency with existing paving.</p> <p>Suggest trees leading to hall are the same as those the Tree Group has already planted around the periphery of the square - Chinese Elm Ulmus Parvifolia x Carpinofolia Frontier. Suggest Chinese Elm and Silver Maple for the Pukemanu corner.</p> <p>Extend the design to the outer boundary with Chinese elms on the corners of Ohio, Kitchener, Cork and Oxford as noted in the 2001 plan - the Tree Group holds root guards and surrounds for these locations.</p> <p>The Tree Group (Lyle Griffiths) would like to be consulted on the tree maintenance programme.</p>	<p>PROMENADE - Oppose extending the promenade inward; suggest extending outward and using existing paving treatment. Tree guards and alternative paving are not appropriate for a rural square; use the ones already around the square. Oppose regular planting of one tree specimen around the square.</p> <p>BOER - Support enhancing Boer area.</p> <p>TOWN HALL & PUKEMANU - Support previous plans.</p> <p>OUTER SQUARE - Suggest extending design plans to outer square, to the corner of each intersection where some trees have already been planted.</p> <p>MAINTENANCE - Support pruning and tree removal in square to let in more light. Consult with Tree Committee (Lyle Griffiths) on tree maintenance programme. Suggest documenting the history of special trees.</p>	<p>Confirm that existing tree guards will be used. Rural design values noted.</p> <p>Alternative pavement treatments will differentiate the promenade and crossings from the road, and will be a harder wearing surface.</p> <p>Confirm that existing tree guards will be used and the toilet block design will be sympathetic to the surrounding buildings.</p> <p>Due to the existing road camber, extending the promenade outward would require completely re-engineering the entire carriageway.</p> <p>Town Hall & Pukemanu comments are no longer relevant to this plan.</p> <p>Trees will not be planted in the promenade. Two small specimen trees will be planted at each entranceway will help balance those with no memorial gate.</p> <p>Note that further development of the "spokes" of the reserve will be considered at the 5 year review of this plan.</p> <p>Request to be consulted for the tree maintenance and planting plan is noted. Accept documenting the history of special trees.</p>	<p>Change picture of tree guard in the Development Plan to reflect the existing guards used around the square.</p> <p>Add policy 4.2.7 Development of the "spokes" of the reserve to be addressed in the next 5 year review.</p> <p>Add Policy 6.2.6 The history of notable trees in the square shall be documented and held in Council's Historic Tree Register (R525).</p>

SUMMARY OF SUBMISSIONS

Martinborough Square Reserve Draft Management & Development Plans

No.	Name/group	Summary 1st round submissions	Summary 2nd round submissions	Officer Comments	Recommendations
3	David Bull	<p>Suggest spending money in better ways than on flagstones and elaborate tree guards.</p> <p>Do not plant trees around the promenade as they will make the square darker and affect drivers' sight lines.</p> <p>Support a hedge around the Boer Memorial, support changes to the WWII memorial and suggest the Korean memorial be relocated to the Cambridge road entrance where it is more visible.</p> <p>Design should include the outer boundary of the area including trees on corners of Ohio, Kitchener, Cork and Oxford to introduce the precinct.</p>		<p>Existing tree guards will be re-used where possible.</p> <p>Confirm that the amended plans do not have specimen trees planted around the square, but there will be two specimen trees at each entrance.</p> <p>Note that outer square issues will be included in the next 5 year review.</p> <p>Flowers will remain around the Boer memorial as they are symbolic of VJ Day.</p> <p>Comments regarding altering memorials no longer apply to this plan.</p>	<p>Change picture of tree guard in the Development Plan to reflect the existing guards used around the square.</p> <p>Add policy 4.2.7 Development of the "spokes" of the reserve to be addressed in the next 5 year review.</p> <p>Delete "...or modifications to existing memorials or monuments..." from rule 3.3.5.</p>
4	Warwick Bullock	<p>Support the changes to the promenade to encourage more use and make it safer and secure for families.</p> <p>Changes to the war memorials are okay as long as the RSA is happy with them.</p> <p>Suggest to get some of Wellington's old rubbish bins - they change bins regularly, where do they go?</p> <p>Consider some plantings along Kitchener Street (and Cambridge, Oxford and Jellicoe) to create a boulevard effect.</p>		<p>Confirm that War memorials will not be altered.</p> <p>Note that outer square development issues will be included in the next 5 year review.</p>	<p>Delete "...or modifications to existing memorials or monuments..." from rule 3.3.5.</p> <p>Add policy 4.2.7 Development of the "spokes" of the reserve to be addressed in the next 5 year review.</p>

SUMMARY OF SUBMISSIONS

Martinborough Square Reserve Draft Management & Development Plans

No.	Name/group	Summary 1st round submissions	Summary 2nd round submissions	Officer Comments	Recommendations
5	James Clark	<p>Depending on what happens with the future of the Town Hall maybe incorporate toilets and Information Centre all in one.</p> <p>Prefer the WWII memorial to remain as it is, or maybe reduce the middle panel and add more seats around it. Suggest fairy lights in the trees on special occasions.</p>		<p>Confirm that War memorials will not be altered.</p> <p>While not opposed to fairy lights in trees, they will not be considered at this time.</p>	<p>Delete "...or modifications to existing memorials or monuments..." from rule 3.3.5</p>
6	Julie Clarke	<p>Opposes most of the plan as it seems to be an exercise in spending money.</p> <p>Less seating is required in the square to make room for Martinborough Fair Day stalls.</p> <p>Relocating the old courthouse would be expensive and the reason for shifting it is unclear.</p> <p>Approves of interpretation panels and improving toilets.</p>	<p>Extra seating in square is not necessary as existing seats not currently used.</p> <p>Suggest signs to keep people from parking cars on the grass. Would like to know reasons for moving the Old Courthouse.</p> <p>Leave the Boer memorial area alone.</p> <p>A promenade is unnecessary.</p> <p>A tree maintenance programme is essential.</p> <p>Agrees with installing interpretation boards and replastering the plinth memorial.</p> <p>Wonders where the money for development comes from.</p> <p>Suggest using the museum more and paying somebody to operate it for a few hours on the weekends.</p>	<p>Adding seating is intended to attract people to use the square regularly, and the Martinborough Fair occurs just twice a year.</p> <p>Rule 7.3.6 prohibits vehicles on the grass in most cases.</p> <p>Moving the old Courthouse would place it in a more central location to be used as an information centre, library, or other community facility, which would encourage its restoration as a valued historic building.</p> <p>Flowerbeds around the memorial are falling apart and this would be the ideal time to also add seating. Agree that the WWII memorial needs maintenance, which will be undertaken by an experienced professional and will follow rule 3.3.4.</p> <p>A promenade exists already but it could be made more inviting. Agree that tree maintenance is essential and section 6 addresses</p>	

SUMMARY OF SUBMISSIONS

Martinborough Square Reserve Draft Management & Development Plans

No.	Name/group	Summary 1st round submissions	Summary 2nd round submissions	Officer Comments	Recommendations
				<p>that requirement.</p> <p>Money for development comes from existing rates and work is done as funds allow.</p> <p>While not opposed to using the museum more, resourcing does not form part of this plan.</p>	
7	Chris & Margaret Cochran	<p>The row of trees leading to the Town Hall actually blocks the visual link between the Hall and the Square.</p> <p>Build up existing planting at 10 (cnr Texas and Cork Streets) and leave the widened footpath clear. Bollards are heavy and ugly.</p> <p>Suggest moving the Courthouse to the Pukemanu corner to define the edge of the square.</p> <p>All war memorials are sacrosanct and should not be altered, certainly not for the spurious reason of 'opening up views'.</p> <p>Wide black seats are ugly, the lighter seating around the Boer Memorial and picnic tables are fine.</p> <p>All four memorials should be listed in the District Plan. Suggest fully restoring the WWII memorial by removing the modern paint to reveal the ochre plaster, and reinstate the seat that faced the Boer memorial.</p>		<p>Comments regarding the Town Hall and Pukemanu corner are no longer applicable to this plan.</p> <p>Old Courthouse cannot be moved to the Pukemanu corner as it is not Council land.</p> <p>Confirm that War memorials will not be altered, and any maintenance will be done by and experienced professional.</p> <p>Accept that the wide seating example is very dark.</p> <p>Listing the memorials as heritage items in the District Plan is currently underway.</p>	<p>Delete "...or modifications to existing memorials or monuments..." from rule 3.3.5.</p> <p>Replace the wide seating example in the Design Elements section of the Draft Development Plan with one of lighter coloured wood.</p>

SUMMARY OF SUBMISSIONS

Martinborough Square Reserve Draft Management & Development Plans

No.	Name/group	Summary 1st round submissions	Summary 2nd round submissions	Officer Comments	Recommendations
8	Pam Colenso (Chair, Martinborough Community Board)	<p>Suggest all footpaths be in keeping with the outer square with brick edging.</p> <p>Keep flowers instead of hedging around the Boer memorial and do not plant trees in the promenade.</p> <p>Seats are not necessary along promenade footpaths and the seating around the Boer memorial should be like the seas in the playground but cantilevered off the planters.</p> <p>Hedging is not appropriate for Pukemanu corner, there used to be one and it just collected rubbish, and Trust House should have the final say.</p> <p>The RSA should direct us with regard to the WWII memorial.</p> <p>Tie the lighting colours of the bollards in with the lighting in the square with colour filters for all on special occasions.</p>	<p>PRIORITIES: No plantings around Boer, only bench seats with exposed aggregate paving. No specimen trees at entrances, and do not extend the promenade into the grassed area.</p> <p>DEVELOPMENT PLAN: Museum area - Remove rocks and replace w lighting bollards. Relocate the Courthouse and ensure the toilets are of a similar design. Do not change the paving.</p> <p>BOER: No hedging, prefer bench seating, support re-plastering and adding up-lights.</p> <p>PROMENADE: Do not extend into the square; pavement in line with the outer square. No specimen trees at entranceways, no trees in pavement. Replace interpretation panels with plaques embedded in pavement.</p> <p>GENERAL: Add more lights and use colour filters. Further consultation required re furniture design. Complete kerb/channelling around inner square.</p> <p>MANAGEMENT PLAN: Council to formalise arrangements with regular users so rate payers don't pay for damage after events.</p> <p>ACKNOWLEDGE time and effort Council has put into the project.</p>	<p>Comments regarding the Town Hall no longer apply to this plan. Confirm that toilet design will be sympathetic to surrounding buildings.</p> <p>Alternative paving will differentiate the promenade and crossings from the road, and will be a harder wearing material.</p> <p>Confirm that hedges will not be used around the Boer memorial and that trees will not be planted in the promenade.</p> <p>Two small specimen trees at each entranceway will help balance those with no memorial gate.</p> <p>Council has no mechanism in place for memorial plaques.</p> <p>The Draft Development Plan allows for more up lighting on the Memorials, and colour filters will be used on special occasions.</p> <p>Approve kerb/channelling around inner square as that will be part of upgrading the promenade surface.</p> <p>Confirm a MOU is acceptable in some cases, but note that rule 7.3.4 addresses event requirements in most cases.</p>	

SUMMARY OF SUBMISSIONS

Martinborough Square Reserve Draft Management & Development Plans

No.	Name/group	Summary 1st round submissions	Summary 2nd round submissions	Officer Comments	Recommendations
9	Pam Colenso		<p>PRIOROTIES: Flowers only around Boer memorial, bench seats with exposed aggregate paving underneath. No specimen trees at entranceways, no trees in pavement. Do not extend pavements into the square; resurface the existing pavement in line with the outer square.</p> <p>DEVELOPMENT PLAN: Museum area - Remove rocks and replace w lighting bollards. Relocate the Courthouse and ensure the toilets are of a similar design. Do not change the paving.</p> <p>BOER: No hedging, prefer bench seating, support re-plastering and adding up-lights.</p> <p>PROMENADE: Do not extend pavements into the square; pave in line with the outer square. No specimen trees at entranceways, no trees in pavement. Replace interpretation panels with plaques embedded in pavement.</p> <p>GENERAL: Add more lights and use colour filters. Further consultation required re furniture design. Complete kerb/channelling around inner square.</p> <p>MANAGEMENT PLAN: Council to formalise arrangements with regular users so rate payers don't pay for damage after events.</p>	<p>Comments regarding the Town Hall are no longer applicable to this plan.</p> <p>Confirm bench seating and flowers only around Boer memorial, plus up lighting and maintenance.</p> <p>Not opposed to exposed aggregate concrete, though note it is more difficult to clean chalk lines off them (like the markings for Martinborough Fair stalls), could consider a combination of smooth/exposed aggregate paving.</p> <p>Confirm that trees will not be planted in the promenade, but there will be two specimen trees at each entrance.</p> <p>Due to the existing road camber, extending the promenade outward would require completely re-engineering the entire carriageway, hence widening it inward.</p> <p>Confirm that toilet design will be sympathetic to surrounding buildings.</p> <p>Note that paving in the Town Hall and Museum area should be left until the next 5 year review given the work to be done on the Town Hall in the near future.</p>	<p>Change item 4 on the Boer War Memorial page of the Draft Development Plan to read "...focus at night, where colour filters will be used on special occasions."</p>

SUMMARY OF SUBMISSIONS

Martinborough Square Reserve Draft Management & Development Plans

No.	Name/group	Summary 1st round submissions	Summary 2nd round submissions	Officer Comments	Recommendations
				<p>The intention to use alternate paving in the square is to differentiate the promenade and crossings from the road, and to use a harder wearing surface.</p> <p>Council has no mechanism in place for memorial plaques.</p> <p>Coloured filters on lights will be used on special occasions.</p> <p>Decline request for further consultation on furniture design.</p> <p>The Draft Management Plan section 7.3.4 addresses major events needing permission and cleaning up the reserve after an event.</p>	

SUMMARY OF SUBMISSIONS

Martinborough Square Reserve Draft Management & Development Plans

No.	Name/group	Summary 1st round submissions	Summary 2nd round submissions	Officer Comments	Recommendations
10	Sonia Dolan (NZHPT)	<p>Suggest that the new planting, seating, paths, lighting and parking arrangements could be designed into the square area to ensure a useful and aesthetic urban form so that it will be appreciated by pedestrians.</p> <p>The toilet block design should be sympathetic to the historic character in its surroundings.</p> <p>If the Boer Memorial needs to be replastered it should be done by an experienced professional. The WWII memorial should not be reduced in size.</p> <p>Encourage that the Old Courthouse remains in its current position and retain its current community 'use' or an alternative community use.</p>	<p>Boer memorial should be replastered by an experienced conservation professional.</p> <p>Note that moving the Courthouse would require resource consent. NZHPT would require a conservation plan as part of that consent.</p> <p>Pleased that the WWII memorial will not be changed and seek reassurance that it will remain as it is and in situ.</p> <p>Note that the management plan is devoid of "historic heritage" matters and consider that the Memorial Square, as a historic reserve, should have its own set of policies in the plan.</p> <p>Plan should reference heritage policies to ensure any future developments with the Square are in keeping with the historic nature or the reserve.</p> <p>Support the idea of interpretation, and suggest the toilet block be of a sympathetic design to surrounding buildings (like the courthouse/museum).</p>	<p>Confirm that any maintenance on war memorials will be done by an experienced professional and rule 3.3.4 will apply.</p> <p>Confirm that the WWII memorial will not be altered or moved.</p> <p>Acknowledge NZHPT requirement for a conservation plan and a resource consent for the Old Courthouse, should it be moved.</p> <p>Decline request for a separate historic heritage section in the Draft Management plan. Section 3 Reserve Resources covers historic and heritage issues in the reserve, and historic heritage is addressed in every section except section 7. Policy 3.2.5 and Rules 3.3.4 and 3.3.5 exist to protect the historic heritage buildings and values of the reserve.</p> <p>Agree that the toilet block design will be sympathetic to surrounding buildings.</p> <p>Agree to interpretation panels as addressed in the Draft Development Plan.</p>	<p>To provide consistency throughout the document in regard to historic heritage values of the reserve, change sec 3.3.4 to "Conservation and Maintenance Plans will be required for any proposed works to the Town Hall, Museum, Old Courthouse (if it is moved to the Reserve), or War Memorials..."</p> <p>Change sec 3.3.6 to "...may be permitted in the Museum and Town Hall area. A resource consent would be required, and designs shall be in keeping with the historic nature of the reserve."</p>

SUMMARY OF SUBMISSIONS

Martinborough Square Reserve Draft Management & Development Plans

No.	Name/group	Summary 1st round submissions	Summary 2nd round submissions	Officer Comments	Recommendations
11	Eva Fenwick	<p>The proposed bollards are not in keeping with the existing ones, they block emergency services access to the Town Hall and access to the car park off Texas street is lost.</p> <p>Suggest fewer trees at Cork/Texas corner and suggest a footpath all the way around that corner.</p> <p>Give the Texas street footpath and carriageway the same treatment as the square.</p> <p>Suggest holding off on decisions around the Town Hall until the building's status is confirmed.</p> <p>Does not agree with hedging at Pukemanu corner and the additional trees in the promenade.</p> <p>Suggest better lighting on Oxford Street crossing.</p> <p>Disagrees with any changes to the WWII memorial.</p> <p>Suggest the interpretation panels and tree grating match those already in use around the square.</p> <p>Disagrees with the toilet design as it does not compliment the historic heritage character of Martinborough.</p>		<p>Confirm that comments regarding the Town Hall and Pukemanu corner are no longer applicable to this plan.</p> <p>Trees will not be planted in the promenade, but there will be two specimen trees at each entrance.</p> <p>Street lighting at Oxford street intersection is outside the scope of this plan.</p> <p>Confirm that the WWII memorial will not be altered.</p> <p>The existing style of tree grates will be used.</p> <p>While not opposed to using similar interpretation panels as elsewhere around the square, the size and content of panels may require a slightly different, yet sympathetic, style.</p> <p>Confirm that the toilet block design will be sympathetic to surrounding buildings.</p>	<p>Change picture of tree guard in the Development Plan to reflect the existing guards used around the square.</p>

SUMMARY OF SUBMISSIONS

Martinborough Square Reserve Draft Management & Development Plans

No.	Name/group	Summary 1st round submissions	Summary 2nd round submissions	Officer Comments	Recommendations
12	Roger Fraser (Murdoch James Estate Wines Limited)	The proposal will ensure the square remains an important focal point of our town.			
13	Heather Gibbs	Approves of hedging around the Boer Memorial, Supports modifying the WWII gates to improve views.		Flowers will be planted around the Boer memorial as they reflect VJ Day. Confirm that the WWII memorial will not be altered.	
14	Lyle Griffiths	Suggest that trees are not planted in the promenade footpath as they would decrease traffic visibility and be too shady. Tree maintenance and planting should be undertaken with Town Square and Tree Committee who have a lot of local experience with species good for Martinborough conditions.		Confirm that trees will not be planted in the promenade footpath, but there will be two specimen trees at each entrance. Request to be consulted for tree maintenance and planting plan is noted.	
15	Ro Griffiths (Chair, Martinborough Square Committee)	The toilet block should be in a similar style to the museum and courthouse. All paved areas should be asphalt and bricks to be consistent with the rest of the square. Remove bollards between Hall and trees, shorten bollards on Texas Street to allow vehicle access to the main door. Suggest a solar light for top of the Boer Memorial. Concerned about rubbish and glass collecting the hedging around Boer Memorial and Pukemanu corner.	MUSEUM & SURROUNDS: Town Hall should be included in the management and development plans again, now that a decision has been made to strengthen it. Offered suggestions about landscaping around Town Hall. Support relocation of Old Courthouse. Toilet block should be of a "colonial" design. Supports pavements of brick and asphalt. BOER: Supplied slatted bench design suggestions.	Comments regarding the Town Hall are no longer applicable to this plan. Decline request for solar light on Boer memorial. Confirm that hedges will not be planted around the Boer memorial. The toilet block design will be sympathetic to surrounding buildings. The intention behind using alternative paving treatments in the square is to differentiate the promenade and crossings from the road, and to use a harder	Change picture of tree guard in the Development Plan to reflect the existing guards used around the square. Amend Appendix 1 (reserve map) so the boundaries are more clear. Change item 3 on the Promenade page of the Draft Development Plan to read "...draw people into the square. Annuals will be planted at each pedestrian crossing."

SUMMARY OF SUBMISSIONS

Martinborough Square Reserve Draft Management & Development Plans

No.	Name/group	Summary 1st round submissions	Summary 2nd round submissions	Officer Comments	Recommendations
		<p>Suggest continued use of asphalt and bricks instead of proposed paving around promenade.</p> <p>Trees in the footpath/promenade are too formal, conflict with random planting in square and create too much shade.</p> <p>Focus on footpath extensions and garden reconfiguration at crossings instead.</p> <p>Use the tree guards currently used around the square.</p> <p>Suggest brass plaques embedded in pavement to highlight historical/interesting facts and stories.</p> <p>Appendix 3 and the 2002 Management plan have some historical inaccuracies.</p> <p>How will 2.2.5 (no cars on grass in square) in the Management Plan be enforced?</p> <p>The history in section 4 is incorrect; please amend with assistance of the Tree Group.</p> <p>Sec 4 para 3, should this read "soak pits" instead of "tree pits"?</p> <p>Suggest 4.1.1 reads "The Council, in collaboration with the Community Board, will implement..."</p>	<p>Support re-plastering memorial and adding up-lighting.</p> <p>PROMENADE - Suggest extending footpath outward into carriageway instead of inward.</p> <p>Furniture should be on concrete pads and not around periphery.</p> <p>No specimen trees at entrances.</p> <p>DESIGN - Re-use current tree guards, have plaques in pavement instead of interpretation panels.</p> <p>MANAGEMENT PLAN: 3.3.5 include playground.</p> <p>4.2.4 Suggest MOUs for all regular users of the square (Toast, Round the Vines, Mba Fair).</p> <p>6.2.1 Recommend that Ed Martin be hired to do the tree maintenance.</p> <p>6.2.2 Planting strategies coordinated with community groups/Community Board.</p> <p>Map - Boundaries are not clear.</p> <p>TOP 3 PRIORITIES: Make all crossings like the one near the Hotel.</p> <p>Seating & improvements around the Boer memorial, investigate Rotary and Lions financial assistance.</p>	<p>wearing surface.</p> <p>Confirm that trees will not be planted in the promenade. Note that annuals will be planted at pedestrian crossings.</p> <p>Due to the existing road camber (the slope from the road centre to kerbs) extending the promenade into the carriageway would require completely re-engineering the entire carriageway, hence the recommendation to widen inward.</p> <p>Not opposed to concrete pads for furniture, though depending on the exact styles sourced at the time, concrete piles may be adequate.</p> <p>Two small specimen trees at each entranceway will help balance those with no memorial gate.</p> <p>Confirm that existing design of tree guards will be used.</p> <p>Council has no mechanism in place for memorial plaques.</p> <p>Decline request to include the playground in section 3.3.5 as the intention is to keep war memorials in the central Square which is designated as an</p>	

SUMMARY OF SUBMISSIONS

Martinborough Square Reserve Draft Management & Development Plans

No.	Name/group	Summary 1st round submissions	Summary 2nd round submissions	Officer Comments	Recommendations
		Page 10 fig. 1 - Should Martinborough Square include the entire streets of Cork, Naples, Ohio and Strasbourg Streets, or should the boundary line stop at the inside edge of those streets.	Toilet block should be of a colonial style to match museum and Courthouse.	<p>historic reserve, where the playground is a recreation reserve.</p> <p>Confirm a MOU is acceptable in some cases, but note that rule 7.3.4 addresses event requirements in most cases.</p> <p>Cannot include specific arborist/hiring information in the plan.</p> <p>Request to be consulted for the tree maintenance and planting plan is noted.</p> <p>Confirm that all the crossings will be similar according to the Draft Development Plan.</p> <p>Any funding raised by the community is welcome and will help offset costs.</p> <p>Agree to make the boundaries on the Draft Management Plan map clearer.</p>	

SUMMARY OF SUBMISSIONS

Martinborough Square Reserve Draft Management & Development Plans

No.	Name/group	Summary 1st round submissions	Summary 2nd round submissions	Officer Comments	Recommendations
16	Ro Griffiths	<p>Suggest that the pavement around the Town Hall is done in a similar style to work already done in the square.</p> <p>Will Trust House help with landscaping around the Pukemanu corner?</p> <p>Concerned that planting trees in the promenade in addition to trees in the square will make it dark and create a barrier into the square.</p> <p>Changes to the WWII memorial will make the plaque with the names of soldiers stand out.</p> <p>Would like to see brass plaques placed in the footpath describing history, stories and characters.</p>		<p>Comments regarding Pukemanu and the Town Hall are no longer applicable to this plan.</p> <p>Note that the WWII memorial will not be altered.</p> <p>Confirm that trees will not be planted in the promenade footpath, but there will be two specimen trees at each entrance.</p> <p>Council has no mechanism in place for memorial plaques.</p>	
17	Jo Guscott	<p>Support the proposal and wants the design not to be too formal as we are a small rural town and visitors like the informal nature of the square.</p> <p>Suggest more coloured lights in the square as they give a feeling of fun and glamour on dark wet nights.</p>		<p>Consider that the drawn plans might look a bit formal but the actual outcome will not be.</p> <p>Confirm that colour filters on lights will be used on special occasions.</p>	<p>Change item 4 on the Boer War Memorial page of the Draft Development Plan to read "...focus at night, where colour filters will be used on special occasions."</p>

SUMMARY OF SUBMISSIONS

Martinborough Square Reserve Draft Management & Development Plans

No.	Name/group	Summary 1st round submissions	Summary 2nd round submissions	Officer Comments	Recommendations
18	Cath Henderson	<p>The Town Hall could be even better presented with gardens and a beautiful sign.</p> <p>Consider repaving around the Boer Memorial with red brick or honey/limestone paving.</p> <p>Similar suggestion for the promenade, and if concrete is the most economical then consider colouring it cream or red brick.</p> <p>Wonder if P&K and the Wine Pressing building could make their covered windows more attractive with photo murals or similar.</p> <p>Incorporate into the plan some new areas for annual plantings as they lift the heart.</p> <p>Consider moving the Library into the Town Hall or Old Courthouse which could draw people to that side of the square.</p> <p>Park a coffee/ice cream cart in the square over summer.</p> <p>The roads leading to the square are a mess with dog droppings, broken pavement, weeds, and a lack of trees. Please enforce picking up dog waste and smarten up these roads so our tourist town doesn't look so unkempt.</p>		<p>Comments regarding the Town Hall are no longer applicable to this plan.</p> <p>Not opposed to using cream/honey coloured concrete treatment.</p> <p>The shops surrounding the square do not form part of this plan.</p> <p>Agree that annuals could be planted in crossings; any other annual beds could be considered at the next 5 year review.</p> <p>The intention of moving the Old Courthouse is to open it up for use by the library, a shop, cafe or similar.</p> <p>Under existing bylaws coffee or ice cream carts can park next to the square; parking in the square (not on the grass) would require Council permission and possibly resource consent.</p> <p>Further developing and managing the "spokes" of the outer square to be considered at the next 5 year review.</p> <p>Request for dog enforcement noted.</p>	<p>Add policy 4.2.7 Development of the "spokes" of the reserve to be addressed in the next 5 year review.</p> <p>Change item 3 on the Promenade page of the Draft Development Plan to read "...draw people into the square. Annuals will be located at each pedestrian crossing."</p>

SUMMARY OF SUBMISSIONS

Martinborough Square Reserve Draft Management & Development Plans

No.	Name/group	Summary 1st round submissions	Summary 2nd round submissions	Officer Comments	Recommendations
19	William Higginson	<p>The Town Hall area has enough trees; do not put them in the footpath.</p> <p>Do not agree with lighting/bollards in front of the hall or seating on the north end.</p> <p>There is not enough parking now, and what about bus parks?</p> <p>Need a footpath from the Town Hall to Cork Street corner.</p> <p>No hedges around the Boer memorial, people like the flowers - the circular flower beds were built as a memorial for VJ day and were originally planted with flowers and peace roses.</p> <p>No hedges at Pukemanu.</p> <p>No trees around the promenade, there is not enough light in the square now.</p> <p>Finish the pedestrian crossing extensions.</p> <p>Concerned about number of trees to be removed from central square.</p> <p>Do not make any changes to the WWII memorial.</p> <p>Sec 4.2.1(1) of the 2002 management plan stated that all memorials should have been</p>		<p>Comments about the Town Hall and Pukemanu corner no longer apply to this plan.</p> <p>Confirm that trees will not be planted in the promenade footpath, and hedges will not be planted around the Boer Memorial, however there will be two specimen trees at each entrance.</p> <p>The WWII memorial will not be altered and listing the memorials in the District Plan is underway.</p> <p>Agree that the history section was full of errors and has been removed entirely from the Draft Management Plan. It was agreed that town history does not belong in a management document and should be addressed more appropriately and accurately elsewhere.</p> <p>Your request to put "1894" sign back on museum and "Town Offices Board" sign on Martinborough town board office, (provided the signs still exist) is noted.</p>	

SUMMARY OF SUBMISSIONS

Martinborough Square Reserve Draft Management & Development Plans

No.	Name/group	Summary 1st round submissions	Summary 2nd round submissions	Officer Comments	Recommendations
		<p>included on the District Plan heritage register. The whole square is a war memorial.</p> <p>Suggest the Boer memorial lighting is under the seating to protect lights from vandals.</p> <p>Please put "Town Offices Board" sign back on Mba town board office, and put "1894" back on museum.</p> <p>Please correct errors in names, dates and plans in the Management Plan. These errors were carried over from the 2002 version.</p>			
20	Michael Honey	<p>The new toilets are a must. Depending on what happens with the future of the Town Hall maybe incorporate toilets and Information Centre all in one.</p> <p>Prefer the WWII memorial to remain as it is, or maybe reduce the middle panel and add more seats around it. Perhaps fairy lights in the trees on special occasions.</p>		<p>Confirm that the WWII memorial will not be altered.</p> <p>While not opposed to fairy lights in trees, they will not be considered at this time.</p>	

SUMMARY OF SUBMISSIONS

Martinborough Square Reserve Draft Management & Development Plans

No.	Name/group	Summary 1st round submissions	Summary 2nd round submissions	Officer Comments	Recommendations
21	Allison Hudson	<p>Suggest the Boer memorial needs to be tidied and painted. Maybe combine the WWII memorial and the Boer Memorial to open the square to the eye.</p> <p>Many trees in the square are in poor shape and restrict the sunlight. They should be drastically reduced and focus on planting fewer trees of better quality.</p> <p>Existing seating is poor so support more picnic tables that are concreted in place.</p> <p>(Attached a separate sheet with suggestions relating directly to the Town Hall building that was forwarded to the recent Town Hall consultation group).</p>		<p>Confirm that maintenance to the Boer memorial is already addressed in the Draft Development Plan. Note that War memorials</p> <p>Agree that trees in central square need to be thinned, and that an arborist will be hired to organise a planting and maintenance plan.</p> <p>Confirm that additional picnic tables and seats are already addressed in the Draft Development Plan.</p>	
22	Gareth Hudson	<p>Suggest that instead of spending \$1million on earthquake strengthening the Town Hall that it is demolished and an in-character community centre be built (surely for less than \$1million).</p> <p>Suggest the dodgy speaker and speaker wire be removed from the Boer War Memorial area.</p> <p>Could make the promenade area even wider since the road around the square is only one way.</p> <p>Perhaps the WWII Memorial could be incorporated with the Boer Memorial.</p>		<p>Comments regarding the Town Hall are no longer applicable to this plan.</p> <p>Decline request to remove speaker & wire at this time.</p> <p>Confirm that the WWII and Boer memorials will not be altered</p> <p>Due to the existing road camber (the slope from the road centre to kerbs) extending the promenade into the carriageway would require completely re-engineering the entire carriageway, hence the recommendation to widen</p>	

SUMMARY OF SUBMISSIONS

Martinborough Square Reserve Draft Management & Development Plans

No.	Name/group	Summary 1st round submissions	Summary 2nd round submissions	Officer Comments	Recommendations
		<p>Tree maintenance has not been going fast enough and most of the trees are sorry species, and please clarify what is to be done with the grass in the square.</p> <p>Suggest more grass space with seats and picnic tables.</p>		<p>inward.</p> <p>Agree that trees in the central square need maintenance and thinning.</p> <p>No changes to the grass are proposed but the Draft Development Plan does address additional picnic tables and seating.</p>	
23	Garry Jackson	<p>Suggest no bollards around the Town Hall; do not widen the footpaths and no extra trees past the Town Hall on in the footpath.</p> <p>Don't reduce parking as people already use the fire station grounds.</p> <p>Leave the Boer Memorial concrete as it is and do not put in hedges, leave the flowers, maybe resurrect seats on the back. Pukemanu corner had hedges previously but removed them.</p> <p>Do not put trees around the promenade and complete the pedestrian crossings.</p> <p>WWII memorial should just be painted and tidied, changes would make waves.</p> <p>There are enough picnic tables and seats, people use blankets not tables.</p>		<p>Comments regarding the Town Hall and Pukemanu corner are no longer applicable to this plan.</p> <p>Confirm that trees will not be planted in the promenade, but there will be two specimen trees at each entrance.</p> <p>Confirm that the crossings are part of the Draft Development Plan.</p> <p>Hedges will not be planted around the Boer Memorial; the roses will remain.</p> <p>Council wishes to encourage use of the square, hence the addition of more seats and tables.</p> <p>Confirm that the WWII memorial will not be altered.</p> <p>Agree that the boundaries of the</p>	<p>Amend Appendix 1 (reserve map) so the boundaries are more clear.</p>

SUMMARY OF SUBMISSIONS

Martinborough Square Reserve Draft Management & Development Plans

No.	Name/group	Summary 1st round submissions	Summary 2nd round submissions	Officer Comments	Recommendations
		Some concern over the boundaries of the reserve and how it might affect emergency services access (boundaries include entire streets Naples, Strasbource, Ohio and Cork) if roads were closed.		reserve shown in the Draft management Plan (Appendix 1) will be corrected.	
24	Conor Kershaw (Chair, Martinborough Business Association)		<p>Support the plan and suggest that surrounding restaurants and cafes should be allowed (under licence granted by the CEO) to use up to 20% of the central Square to serve food and beverages and would maintain and reinstate the area each day.</p> <p>Also, similar to 3.2.4, events in the central square should be encouraged.</p> <p>Top 3 priorities are: Support businesses around the square, provide a vibrant hub for the town, increase usage of the central square by the public. (Frank Cornelissen, Deputy Chair)</p>	<p>Decline request for licensing the use of the central square by local restaurants and cafes.</p> <p>Agree that the central square should be promoted for events.</p>	Change policy 3.2.4 to read "The use of the reserve (including the Town Hall building) for community activities will be promoted."

SUMMARY OF SUBMISSIONS

Martinborough Square Reserve Draft Management & Development Plans

No.	Name/group	Summary 1st round submissions	Summary 2nd round submissions	Officer Comments	Recommendations
25	David Kershaw	<p>Need to allow for access to the southern side of the Town Hall for large item entry into the hall.</p> <p>Ensure lighting around Boer memorial is extended down paths as well.</p> <p>At Pukemanu corner changes should not block drivers' views.</p> <p>Square could use even more seats and there are currently too many trees for a clear view to the centre of the square.</p> <p>Suggest more picnic tables and fewer trees, and seats should not have wooden bases.</p> <p>Toilet block needs to have one 24 hour toilet and both M&F toilets operating while old court house business is open.</p> <p>Suggest more car parking for Town Hall, perhaps next to the Fire Station.</p> <p>Request that all pedestrian crossings are raised like the ones on Kitcheners Street.</p>	<p>Top 3 priorities: Boer memorial improvements, WWII memorial improvements, Town Hall & Surrounds improvements.</p> <p>TOWN HALL/MUSEUM AREA - Support moving Courthouse and most of the previous Town Hall plans.</p> <p>BOER - Support seating and more lighting, and keep the roses.</p> <p>PROMENADE - Support extending promenade outward as in original plans. Suggest all pedestrian crossings are judder bars/humps.</p> <p>WWII - Support original plans to change as it is out of proportion now that it is not tied to a hedge. Incorporate a raised garden.</p> <p>TREES - Support maintenance and future plantings.</p> <p>LIGHTING - need more powerful raised lighting. Don't use coloured filters too much. Supports the Management Plan.</p>	<p>Comments regarding the Town Hall and Pukemanu corner are no longer applicable to this plan.</p> <p>Lighting in addition to the Draft Development Plan could be addressed at the next 5 year review.</p> <p>Confirm that roses will be retained around Boer memorial.</p> <p>More tables and seats are addressed in the Draft Development Plan.</p> <p>Agree that trees need thinning and pruning, which is addressed in the Draft Management and Development Plans.</p> <p>Request for toilet block to have male and female toilets and a 24 hour toilet is noted.</p> <p>Current speed values around the square don't warrant raised paving as a traffic calming measure.</p> <p>The WWII memorial will not be altered.</p> <p>Due to the existing road camber (the slope from the road centre to kerbs) extending the promenade into the carriageway would require completely re-engineering the entire</p>	<p>Change item two on the Boer Memorial page in the Draft Development Plan to read "...and ensuring safety. The existing roses will remain."</p>

SUMMARY OF SUBMISSIONS

Martinborough Square Reserve Draft Management & Development Plans

No.	Name/group	Summary 1st round submissions	Summary 2nd round submissions	Officer Comments	Recommendations
				<p>carriageway, hence the recommendation to widen inward.</p> <p>Not opposed to raised lighting, however the focus of this plan is on in-ground lighting. Confirm that coloured filters will be used on special occasions.</p>	
26	Kathryn Lacey (Powerco Limited)	<p>Seeks to ensure that policies recognising the existing utilities in the square and providing for their ongoing operation, maintenance and upgrading.</p> <p>Maintenance can include clearing vegetation where roots can interfere with underground cables.</p> <p>Request that planting is appropriately managed, including consultation with Powerco, to avoid damage to any underground cables.</p> <p>Request that the following policies are added to the Management Plan:</p> <ol style="list-style-type: none"> 1. To allow utility operators to access the Martinborough Square for the operation and maintenance of existing network utilities within the square, subject to the provisions of the relevant empowering acts and notification to the Council. 2. Consultation shall be required with Powerco prior to the planting of any vegetation within the vicinity of 	<p>Request that the Management Plan recognises the presence of network utilities, specifically Powerco's electricity distribution network.</p> <p>Suggest including the following policies in 7.3.7:</p> <ol style="list-style-type: none"> 1. To allow utility operators to access the Martinborough Square for the operation and maintenance of existing network utilities within the square, subject to the provisions of the relevant empowering acts and notification to the Council. 2. Consultation shall be required with Powerco prior to the planting of any vegetation within the vicinity of its underground electricity cable. 3. To ensure that activities and development within Martinborough Square do not generate adverse effects (or reverse sensitivity effects) on existing infrastructure. 	<p>Agree to requested changes.</p>	<p>Existing utilities were not covered in the draft plan, therefore recommend adding the following rules to section 7.3.7:</p> <p>7.3.7(4) Utility operators can access the Square for the operation and maintenance of existing network utilities within the reserve, subject to the provisions of this Management Plan and notification to the Council.</p> <p>7.3.7 (5) Consultation shall be required with utility operators prior to the planting of any vegetation within the vicinity of underground electricity cables or similar.</p> <p>7.3.7 (6) Activities and development within Martinborough Square shall not generate adverse effects (or reverse</p>

SUMMARY OF SUBMISSIONS

Martinborough Square Reserve Draft Management & Development Plans

No.	Name/group	Summary 1st round submissions	Summary 2nd round submissions	Officer Comments	Recommendations
		<p>its underground electricity cable.</p> <p>3. Ensure that activities and development within Martinborough Square do not generate adverse effects (or reverse sensitivity effects) on existing infrastructure.</p>			sensitivity effects) on existing infrastructure.
27	David Lawrence	<p>Supports the proposal in general.</p> <p>Suggests we don't do work around the Town Hall until earthquake assessments are done and costs finalised.</p> <p>Suggest that the symmetrical placement of 16 pin oaks is too formal.</p> <p>Replanting trees needs some thought as young and old trees don't mix.</p>	<p>Improve both the old and new trees, encourage the grass.</p> <p>Agree with moving the old courthouse and using as info centre. Suggest that Boer memorial flowerbeds are out of context so remove.</p> <p>Wonders what is the purpose of widening the promenade as people walk through, not around, the square.</p> <p>Leave some areas free in the centre for young tree planting and continue pruning.</p> <p>Disagree with tree lighting, but use plain light if necessary.</p> <p>Interpretation panels become old quite soon, keep information on or near the museum instead.</p>	<p>Comments regarding the Town Hall no longer apply to this plan. Confirm that trees will not be planted in promenade.</p> <p>Confirm that an arborist will make a tree maintenance and planting plan.</p> <p>Flowerbeds were created to recognise VJ Day and will remain.</p> <p>Confirm that plain lighting will be used most of the time.</p> <p>Not opposed to keeping the information panels near the museum.</p> <p>The proposal to widen the promenade will make the square more visually inviting, and pedestrian crossings made of the same paving will link the square to the surrounding area.</p>	

SUMMARY OF SUBMISSIONS

Martinborough Square Reserve Draft Management & Development Plans

No.	Name/group	Summary 1st round submissions	Summary 2nd round submissions	Officer Comments	Recommendations
28	Lis Lawrence		<p>Council should maintain the square's resources with minimal disruption, and the Kitchener Street entrance should be free of sandwich boards and other advertising.</p> <p>If buildings are moved they should not block the children's play area from view. Use resources to keep the area tidy and well kept.</p>	<p>Confirm that development will be done gradually to avoid too much disruption.</p> <p>Rule 7.3.5(3) prevents the proliferation of sandwich boards and will be enforceable when this plan is made operative.</p> <p>Acknowledge suggestion to keep playground in view and suggest that the Old Courthouse will not block it entirely.</p>	
29	Diane Lusk	<p>Please include dog litter bins in the plan and keep stray dogs off the streets and square.</p> <p>Please keep trucks from driving down Kitchener Street and around the square (use the bypass). There is no point in beautification if the underlying issues aren't addressed.</p>		<p>Not opposed to dog litter bins, however there will be regular rubbish bins to use.</p> <p>Acknowledge request to deal with stray dogs and note that Council relies on residents to ring us when they notice strays.</p> <p>Truck traffic is outside the scope of this management plan.</p>	
30	Chris Maclean	<p>Restore the light that was originally on top of the Boer War Memorial.</p> <p>Strongly object to the proposed changes to the WWII Memorial which will emasculate the art deco monument and is an unacceptable slight on the dead whom it honours. The purpose of War Memorials is to be noticed forever, not just for a generation, which is why the Boer Memorial originally had a light and why the WWII memorial 'blocks the view'! Memorials should be enhanced, not diminished.</p>		<p>The WWII memorial will not be altered.</p> <p>Accept replacing the light on top of the Boer memorial.</p>	<p>Add "Replace the Boer memorial light" to the Boer War Memorial section of the Draft Development Plan.</p>

SUMMARY OF SUBMISSIONS

Martinborough Square Reserve Draft Management & Development Plans

No.	Name/group	Summary 1st round submissions	Summary 2nd round submissions	Officer Comments	Recommendations
31	Mary & Paul Mason (Rotary Martinborough Fair Charitable Trust)	<p>Extra plantings and tables in the square will impact on Martinborough Fair stallholders but confident we can work around that.</p> <p>Suggest rata or pohutukawa instead of pin oaks around the promenade.</p> <p>Request that Fair Days are not disrupted by any construction plans.</p> <p>Request that under section 2.2.6 no charges are made to Rotary Martinborough Fair Charitable Trust, fair stallholders or the general public for use of the Memorial Square or any other facilities used during Martinborough Fair days. Charges would reduce the amount of funds distributed throughout the community by Rotary.</p> <p>Suggest cable laid underground for PA system and for more power points in the square.</p>	<p>Seek confirmation that the recent MOU with SWDC for the Martinborough Fair's long term conduct and management means that individual stall holders would not have to seek further approval to operate at the Rotary Martinborough fair events, under section 7.3.4.1.</p>	<p>Confirm that trees will not be planted around the promenade, but there will be two specimen trees at each entrance.</p> <p>Confirm that every effort will be made to ensure construction does not disrupt regular Square events.</p> <p>Confirm that the Rotary Martinborough Fair's MOU covers all stallholders and satisfies section 7.3.4(1) of the proposed Management Plan.</p> <p>Decline request for new cable/more power points in the Square.</p> <p>Under section 7.3.4(4), bonds to cover any post-event repairs will be considered on a case by case basis.</p>	
32	Victoria Read	<p>Like the proposed paving but request no orange bricks. Suggest some of the seats at the Boer memorial face outward as well.</p> <p>Does not like the toilet design, revamping the current block would look better.</p> <p>Request that any street furniture is cleaned regularly as the existing picnic tables are never cleaned and</p>		<p>Confirm that orange bricks will not be used in the central square paving.</p> <p>The toilet block design will be sympathetic to surrounding buildings.</p> <p>Cleaning tables and benches will be added to regular maintenance programmes.</p>	

SUMMARY OF SUBMISSIONS

Martinborough Square Reserve Draft Management & Development Plans

No.	Name/group	Summary 1st round submissions	Summary 2nd round submissions	Officer Comments	Recommendations
		<p>always filthy. Suggest timber rubbish bins.</p> <p>Plain lighting only in the square.</p>		<p>Request for timber rubbish bins is noted. Confirm that colour filters will be used on the lights only on special occasions.</p>	
33	Maree Roy	<p>Suggest that if roses are removed from around the Boer memorial, the roses are replanted in another area with a plaque identifying them as "Peace Roses" planted for the WWII - VJ day. The Rose Show Committee should be advised if the roses are to be completely removed.</p> <p>Rather than seating around the Boer memorial suggest spending more on seating in the grass areas around the park.</p> <p>Suggest an in-ground watering system if hedges are put in around the Boer memorial.</p>	<p>Suggest replanting the peace roses in another area with a plaque.</p> <p>Focus on seating in grassed area rather than around the Boer memorial.</p> <p>If hedges are planted around Boer memorial be sure to include an irrigation system and regular maintenance.</p> <p>Place recycling bins as well as rubbish bins around the square.</p>	<p>Confirm that hedges will not be planted around the Boer memorial and the roses will remain.</p> <p>Confirm that more seating is proposed for the grassy area under the Development Plan, as well as seating around the Boer memorial.</p> <p>Not opposed to recycling bins in theory, however Council has tried them at other locations in the past and people just use them as rubbish bins.</p>	
34	Malcolm Stayner	<p>Wonders if the light on the Boer Memorial will be replaced with the original or a replica?</p> <p>Supports the proposed changes to the WWII memorial. Maintain the trees as long as possible and replace them with the same species when the time comes.</p>		<p>Agree to replacing the light on top of the Boer memorial with the original if it still exists, or a replica if possible.</p> <p>The WWII memorial will not be altered.</p> <p>Confirm that a tree maintenance and planting plan will be created by an arborist.</p>	<p>Add item 5 to the Boer Memorial page of the Draft Development plan: Original light on Boer Memorial to be replaced.</p>

SUMMARY OF SUBMISSIONS

Martinborough Square Reserve Draft Management & Development Plans

No.	Name/group	Summary 1st round submissions	Summary 2nd round submissions	Officer Comments	Recommendations
35	Tony & Liz Tait	<p>Our top priority should be culling many of the trees in the square, which is dark, cold and uninviting.</p> <p>New trees should be planted properly using deep holes, fertiliser and regular watering.</p> <p>Like the proposed seating, footpath around the square, oaks, seats and picnic tables and replacing toilet block.</p>	<p>Top 3 priorities are more light, more welcoming and fewer trees.</p> <p>Well done, and get on with the upgrade.</p>	<p>Confirm that a tree maintenance and planting plan will be created by an arborist.</p> <p>Confirm that trees will not be planted in the promenade, but two specimen trees will be planted at each entrance.</p>	
36	Derek Wilson (Lions Club)		Request that Council liaise with the Lions Club regarding replacing existing tables and seats in the square as the Lions updated the picnic table tops two years ago.	Request to be consulted regarding any changes to the existing picnic tables is noted.	
	Further suggested changes by Council officer				Rule 3.3.6: Change to read "...permitted in the Reserve. Resource consent..." to fix a typo.

**Appendix 2 – Martinborough
Square Reserve Draft
Management Plan (with
tracked changes) and Draft
Development Plan**

**MARTINBOROUGH SQUARE
DRAFT MANAGEMENT PLAN
01/12/2011**

*A Management Plan prepared in accordance with the requirements of the
Reserves Act 1977*

CONTENTS

1.	INTRODUCTION	4
1.1	Purpose of the Management Plan.....	4
1.2	Vision	4
1.3	Content of Plan	5
1.4	Reserve Area	5
1.5	Summary of site values and resources	5
1.6	Legal Framework	5
2.	ADMINISTRATION	6
2.1	Land Parcels.....	6
2.2	Classification	6
2.3	District Plan Provisions	7
2.4	Community and Organisational Interest	7
2.5	Objectives	8
2.6	Policies	8
3.	RESERVE RESOURCES	8
3.1	Objectives	9
3.2	Policies	9
3.3	Rules	9
4.	DEVELOPMENT	10
4.1	Objectives	10
4.2	Policies	10
5.	STREET FURNITURE, STRUCTURES AND DESIGN ELEMENTS	11
5.1	Objective.....	11
5.2	Policies	11
6.	TREES AND VEGETATION	12
6.1	Objectives	12
6.2	Policies	12
7.	MANAGEMENT AND ASSET MAINTENANCE	13

7.1	Management Objective	13
7.2	Management Policies	13
7.3	Management Rules.....	14
7.4	Asset Management Objectives.....	16
7.5	Asset Management Policies.....	16
7.6	Asset Management Rules	17

DRAFT

1. INTRODUCTION

Martinborough Square (known as The Square) is situated in the centre of Martinborough and is the central hub of Martinborough's distinctive Union Jack road layout. The Square includes Ohio, Strasbourge, Cork, and Naples Streets and their footpaths and berms, most of the block that holds the Town Hall and the Museum, and Soldiers Memorial Park which is the grassed and treed area in the centre.

Deleted: ,

Deleted: Memorial Square

The Square is also the central point for regular large-scale events such as the Martinborough Fair and Toast Martinborough, which extend beyond Memorial Square to include the main streets of The Square. While these events bring large numbers of people to Martinborough and have a positive spin-off for the local economy, they can put pressure on The Square so it is important that it is carefully managed.

The South Wairarapa District Council has worked with key stakeholders and with the help of landscape architects Boffa Miskell has prepared a draft Management Plan and draft Development Plan that reflects the needs of the community and identifies actions that can easily be translated into on-the-ground works.

Preparing a Management Plan hand-in-hand with a Development Plan is a new approach for the Council. It enables the Management Plan to identify the high level objectives and policies while providing clear guidance and support for the implementation of the detail in the Development Plan.

The Management Plan should be read in conjunction with the Development Plan which contains a visual representation and a list of the proposed works. Together the two plans will help ensure ideas can be translated into actions.

Community support is integral to the successful management of The Square. The Council will continue to work in partnership with the community to achieve this.

Note: At the time of this writing the future of the Martinborough Town Hall is under public consultation. The outcome of that consultation will be carried out in tandem with and will link to any operative Reserve Management Plan and Development Plan. The Reserve Management Plan and Development Plan will be reviewed every five years, at which time any changes to the status of the Town Hall can be incorporated.

1.1 Purpose of the Management Plan

The Martinborough Square Management Plan establishes a vision and provides a policy framework for the management of The Square. The objectives and policies help guide decisions about the management of The Square. The Management Plan will be implemented through the Development Plan and an annual programme of works.

1.2 Vision

The Square remains the central hub of Martinborough and residents and visitors recognise the cultural, heritage, amenity and recreational values it provides.

1.3 Content of Plan

This plan is structured in the following way:

1. Introduction
2. Administration
3. Reserve Resources
4. Development
5. Street Furniture
6. Trees and Vegetation
7. Management and Asset Maintenance

Deleted: m

Each section contains background information, objectives, policies and rules to guide management and development of the reserve. The content of this plan will be subject to periodic review to ensure the objectives and policies remain relevant to the management and development of the reserve.

1.4 Reserve Area

Martinborough Square Reserve (known as The Square) is located in the centre of Martinborough and provides a focal point for the town. It has significant historic, recreational and cultural values for the community and visitors to the town. The Square comprises 2.172 hectares of open space land that includes [Soldiers Memorial Park](#) (the central square), and the Town Hall and Playground area bounded by Oxford, Texas and Cork Streets. Footpaths and berms along streets that radiate from the central square, and bounded by Ohio, Strasbourge, Cork and Naples Streets, are also part of the reserve. This Management Plan covers the land listed in section 2 that has been classified recreation, historic and local purpose under the Reserves Act 1977. A plan of the reserve area is in Appendix 1.

Deleted: Memorial Square

1.5 Summary of site values and resources

There are a range of natural, cultural, heritage and recreational values associated with the reserve including:

- Open space for a range of recreational activities and events
- Significant heritage buildings and war memorials
- The unique Union Jack layout of The Square
- Values associated with Notable Trees in the central square
- An important green space for residents and visitors in the centre of town

1.6 Legal Framework

The Reserves Act 1977 is the principal piece of legislation that governs the management and development of Martinborough Square Reserve. Other relevant legislation and documents considered include:

The South Wairarapa District Council Reserves Strategy

The Wairarapa Combined District Plan (under the Resource Management Act 1991)

Council's Annual Plan and Long Term Plan

The Historic Places Act 1993

The Building Act 1991

Principles of the Treaty of Waitangi

Bylaws and policies adopted by Council

2. ADMINISTRATION

The administration of the Martinborough Square Reserve must reflect the purposes for which the land parcels are classified under the Reserves Act 1977. Administration should also comply with the District Plan, other statutory documents and the needs and concerns of the community.

2.1 Land Parcels

The land that makes up Martinborough Square Reserve is in several different parcels.

The land comprising Memorial Square is closed road (SO 17366). The Boer memorial was constructed in the centre of the crossroads in 1906 and the roads were then closed in 1921. The central square area was fenced off and dedicated as the town's official war memorial in November 1921.

The museum land (WN 67/185) was purchased in 1908 and the Town Hall sections (WN 32/279, WN 216/206) were purchased in 1912. In 1947 the Town Board bought the playground land (WN 209/291, WN 526/3, WN 396/287).

2.2 Classification

The table below outlines the separate land parcels in Martinborough Square Reserve and their classification under the Reserves Act 1977:

Reserve Area	Legal Description	Title Reference	Classification
Museum	Lot 259 DP 248	WN 67/185	Recreation Reserve
Town Hall	Lot 251 DP 248	WN 32/279	Local Purpose (Community Purpose) Reserve
Town Hall	Lot 252 DP 248	WN 32/279	Local Purpose (Community Purpose) Reserve

Town Hall	Pt Lot 257 DP 248 & DP 2643	WN 216/206	Local Purpose (Community Purpose) Reserve
Playground	Lots 253, 254 ,255 & 258 DP 248	WN 209/291, WN 526/3, WN 396/287	Recreation Reserve
Memorial Square	Closed Road SO 17366 & SO 33331		Historic Reserve

According to the Reserves Act 1977, a Recreation Reserve is "Land for the purpose of providing areas for the recreation and sporting activities and the physical welfare and enjoyment of the public, and for the protection of the natural environment and beauty of the countryside, with emphasis on the retention of open spaces and on outdoor recreational activities, including recreational tracks in the countryside."

Local Purpose Reserves are "for the purpose of providing and retaining areas for such local purpose or purposes as are specified in any classification of the reserve." The Town Hall parcels have subsequently been classified as "Community Purpose" areas in keeping with town hall uses and activities.

Historic Reserves are "Land for the purpose of protecting and preserving in perpetuity such places, objects, and natural features, and such things thereon or therein contained as are of historic, archaeological, cultural, educational, and other special interest."

2.3 District Plan Provisions

The Wairarapa Combined District Plan also identifies trees in the central square as "Notable Trees" (Ts077) listed in section 6. Work to Notable Trees other than minor trimming requires resource consent.

Under the Wairarapa Combined District Plan, Martinborough Square Reserve is zoned commercial. The area also falls within the Martinborough Town Centre Historic Heritage Precinct. The Martinborough Town Hall, the Colonial Museum and the Boer War Memorial sit within the Martinborough Square Reserve area and are designated as heritage items in the District Plan.

2.4 Community and Organisational Interest

Community support is integral to the management and development of Martinborough Square Reserve, allowing cooperative implementation of the objectives and policies of the management plan and development plans. There is a wide range of interest in The Square including:

- Town residents who use the reserve
- The wider community and visitors to Martinborough
- Friends of Martinborough Town Hall
- The Martinborough Tree Committee
- Martinborough businesses with direct links to the square, or who use it for informal activities or formal events

Tangata Whenua

The Returned Servicemen's Association

The New Zealand Historic Places Trust

2.5 Objectives

- 2.5.1. To provide for integrated management of the various parts of Martinborough Square Reserve, protecting and enhancing the historic, community and recreation values and allowing for the use and enjoyment of the reserve.
- 2.5.2. To manage Martinborough Square through a cooperative approach with Council, Community Board, Tangata Whenua, community interest groups and other users of the reserve.

2.6 Policies

- 2.6.1. Manage Martinborough Square in accordance with sections 17, 18 and 23 of the Reserves Act 1977 and the Wairarapa Combined District Plan.
- 2.6.2. Ensure that all of the war memorials in Memorial Square are designated as heritage items in the District Plan.
- 2.6.3. Proactively manage the implementation of the Development Plan to increase the amenity values of the area and ensure there are well-designed facilities.
- 2.6.4. An annual works programme will be developed in consultation with the Martinborough Community Board to ensure the Development Plan is implemented in a cohesive way and as funds allow. The Community Board will engage with relevant community groups and individuals as part of that process.
- 2.6.5. Priority will be on implementing the Martinborough Square Development Plan. If a project is proposed that was not anticipated by the Development Plan, the Council will consult with the community and determine whether the project should proceed. In deciding whether to approve the proposal the Council will consider whether it contributes to and is in keeping with the objectives and policies of the Management Plan and also the potential impact on the ongoing implementation of the Development Plan.
- 2.6.6. The Management Plan is a proactive document, but to remain as flexible as possible the Council will delegate daily management decisions to the Council's Chief Executive. Note: The Chief Executive has powers to delegate management decisions to Council staff to ensure management of the reserve is timely and efficient.
- 2.6.7. Consultation relating to this plan shall be undertaken in accordance with the process and timeframes of the Local Government Act 2002.

3. RESERVE RESOURCES

The Martinborough Square is characterised by three reserve resource categories: Recreation, Historic and Local Purpose.

The Square contains areas catering to both passive and active recreation. Memorial Square is primarily a passive recreation area offering picnic tables and seats under trees, and footpaths leading to and from war memorials. The

playground is an active recreation area that includes play equipment for children, a picnic area, a skate park and grassed open space.

The heritage resources of Martinborough Square Reserve include:

- Memorial Square
- Boer War Memorial
- World War I memorial gates and flagpole
- World War II memorial gates
- Korea, Malaya, Borneo and Vietnam memorial rock
- Martinborough Colonial Museum
- Martinborough Town Hall (also the Local Purpose (Community Purpose) area)

Note: At the time of this publication the Martinborough Town Hall's future development is under consultation.

3.1 Objectives

- 3.1.1. To promote a range of recreational activities, both active and passive, that are complementary to the reserve's cultural, historic and natural values.
- 3.1.2. To actively promote the reserve as a local and regional recreational facility.
- 3.1.3. To preserve the historic integrity of Memorial Square as the town's war memorial.
- 3.1.4. To conserve the historic resources of The Square described above to maintain their heritage significance and availability for public enjoyment and reflection.
- 3.1.5. To promote community use of the Town Hall area.

3.2 Policies

- 3.2.1. Existing recreational facilities will be replaced or maintained as needs, priorities and resources allow.
- 3.2.2. The responsibility for the replacement and maintenance of all aspects of the Square lies with the landowner, unless otherwise stated in any current lease or licence agreement.
- 3.2.3. Leisure and recreation activities that respect the historic values of the reserve will be promoted.
- 3.2.4. The use of the reserve (including the Town Hall building) for community activities will be encouraged.
- 3.2.5. Any maintenance or upgrade of grounds, buildings or structures must protect the historic values associated with the reserve.

Deleted: and surrounding area

3.3 Rules

- 3.3.1. All replacement, maintenance and upgrade work will require the prior approval of the Chief Executive, except minor repairs and maintenance, unless provided for by the Martinborough Square Development Plan.

- 3.3.2. Any development shall comply with the Martinborough Square Development Plan.
- 3.3.3. Any use of the Town Hall must comply with Council's Town Hall hire agreements.
- 3.3.4. Conservation and Maintenance Plans will be required for any proposed works to the Town Hall, Museum, [Old Courthouse \(if it is moved to the Reserve\)](#) or War Memorials according to the ICOMOS New Zealand Charter.
- 3.3.5. New memorials or monuments, in keeping with the objective of remembering and honouring the contributions of New Zealanders in war, are allowed in Memorial Square, subject to Council approval of the scale and nature of the memorial or monument.
- 3.3.6. New buildings and structures, and additions to existing buildings or structures that enhance the community's cultural, recreational and leisure experience may be permitted in the [Museum and Town Hall area](#). A resource consent would be required, [and designs shall be in keeping with the historic nature of the reserve](#).
- 3.3.7. All maintenance and upgrade work will require the prior approval of the Chief Executive, except minor repairs and maintenance, unless covered by the Martinborough Square Development Plan.
- 3.3.8. Any development shall comply with the Martinborough Square Development Plan.

Deleted: or modifications to existing memorials or monuments

Deleted: Museum and Town Hall

4. DEVELOPMENT

The Objectives and Policies of the Management Plan reflect and support the implementation of the Development Plan. They will also help guide decision-making if a project or proposal comes up that was not anticipated by the Development Plan.

Experience has shown that more policy does not necessarily lead to better implementation or on the ground works. With this in mind the Council has worked to streamline the amount of policy in the Management Plan and have a clear focus on implementing that policy through a Development Plan prepared in conjunction with the Management Plan.

4.1 Objectives

- 4.1.1. The distinctive character of Memorial Square is preserved by retaining its open space qualities and maintaining and enhancing the war memorials.
- 4.1.2. The formal Union Jack layout of Martinborough Square and associated vistas are strengthened. The Square is a focal point for and is well-integrated into the rest of the town.

4.2 Policies

- 4.2.1. The Council will proactively implement the Development Plan to increase the amenity values of the area and ensure there are well-designed facilities.
- 4.2.2. An annual works programme will be developed in consultation with the Martinborough Community Board to ensure the Development Plan is implemented in a cohesive way and as funds allow. The Community

Board will engage with relevant community groups and individuals as part of that process.

- 4.2.3. Priority will be on implementing the Martinborough Square Development Plan. If a project is proposed that was not anticipated by the Development Plan, the Council will consult with the community and determine whether the project should proceed. In deciding whether to approve a new proposal the Council will consider whether it contributes to and is in keeping with the objectives and policies of the Management Plan and also the potential impact on the implementation of the Development Plan.
- 4.2.4. The use of Martinborough Square for events or activities will avoid, remedy or mitigate significant adverse affects on Memorial Square and adjacent facilities.
- 4.2.5. Vehicles are not permitted on the grassed area of Memorial Square except under strictly controlled circumstances for events or in emergencies.
- 4.2.6. Entry to Memorial Square is free but charges may be made for commercial activities and concessions. Charges may be made for access to the museum and events in the town hall and for other special events.

4.2.7. [Development of the "spokes" of the reserve will be addressed in the next 5 year review of this plan.](#)

Formatted: Bullets and Numbering

5. STREET FURNITURE, STRUCTURES AND DESIGN ELEMENTS

Replacing and adding some street furniture within Martinborough Square can greatly enhance its amenity and use. Any new street furniture needs to be consistent with the historic character of Martinborough, fit for purpose and be durable and easily maintained.

There is the opportunity to add picnic tables within Memorial Square and to add seating within Memorial Square and along the main streets. The public toilets require replacement to better cater for public use and be of a design that reflects the character of The Square.

There is the potential to upgrade the Martinborough Town Hall. Work on the Town Hall provides an opportunity to ensure better linkages between this public building and the public space of Memorial Square and the town centre.

5.1 Objective

- 5.1.1. To ensure the historic character of The Square is maintained when selecting new furniture and structures, and when considering new design elements.

5.2 Policies

- 5.2.1. Structures and furniture will be of a design that is consistent with the existing character of Martinborough, will be cohesive throughout The Square, and will be designed and implemented to enhance the amenity and recreational values of the area.

- 5.2.2. Design elements such as tree grates and guards, interpretation, seating, lighting, and bollards, will be introduced as the Development Plan is carried out.
- 5.2.3. The public toilets will be replaced in a design and location that is in general accordance with the Development Plan.
- 5.2.4. Alteration or redevelopment of the Town Hall and environs shall seek to better integrate it with other parts of The Square, especially [Soldiers Memorial Park](#).
- 5.2.5. Signage will be kept to a minimum and its design will reflect the character of The Square.

Deleted: Memorial Square

6. TREES AND VEGETATION

The mature trees in Memorial Square have a long history. Many of them date back to 1920 or earlier. Despite the formal layout of Memorial Square, the trees in each of the four quadrants are randomly planted and comprise a range of species, some of which have flourished but others less so. The trees provide a shady canopy during the summer months.

Twenty four trees in Memorial Square are scheduled Notable Trees in the Wairarapa Combined District Plan. The Memorial Square contains several Notable Trees. These comprise *Quercus ilex* (2), *Quercus rubra* (6), *Mespilus germanica*, *Ulmus procera* (5), *Grivillea robusta*, *Quercus robur* (5), *Eucalyptus ficifolia*, *Eucalyptus sideroxylon*, *Trachycarpus fortunei*, *Eucalyptus leucoxylon* *Rosea*.

In addition to the trees in Memorial Square, there are trees planted around the edges of the road that surrounds Memorial Square and also on the berms of the "Union Jack" streets. This tree planting is relatively recent and, [along with the associated works such as kerb extensions and formation of tree pits \(lined holes to plant trees in that prevent roots from growing into and damaging infrastructure\)](#), was carried out as a collaborative effort between Council and members of the community.

Deleted: together

There are also some low shrub and annuals in Memorial Square in the around the Boer War Memorial and similar planting in some of the kerb extensions.

6.1 Objectives

- 6.1.1. To ensure the existing and future plantings compliment the historic, recreational and cultural values of the square.

6.2 Policies

- 6.2.1. In the first year of this plan, the Council will engage an arborist for advice on tree health and viability. The Council will implement the recommendations of the arborist report, including removal or pruning of trees where necessary.
- 6.2.2. Following the initial tree removal and maintenance work, the Council shall prepare a comprehensive planting strategy to guide ongoing maintenance and replacement of trees. That plan will ensure that

changes relating to the trees are appropriate to the history and enhance the character of Martinborough Square.

- 6.2.3. An annual programme of tree maintenance will be included in the annual works programme prepared each year for the implementation of the Development Plan.
- 6.2.4. Tree planting shall extend along the streets identified in the development plan to enhance the amenity value of these streets and to integrate them with Memorial Square.
- 6.2.5. Tree planting shall recognise the building facades as a major determinant of the character of The Square and the species and planting location shall be selected accordingly.
- 6.2.6. The history of notable trees in the Square shall be documented and held in the Council's Historic Tree Register (R525).

Deleted: .¶

Formatted: Font: Bold, Italic

7. MANAGEMENT AND ASSET MAINTENANCE

This section sets out the objectives and policies for the day-to-day management of Martinborough Square Reserve. Management needs to be consistent with the requirements of the Reserves Act 1977 and other relevant legislation, and with other Council plans such as the Annual Plan.

The following objectives and policies apply in addition to any requirements contained in leases or licences of parts of the reserve.

7.1 Management Objective

To effectively manage and maintain Martinborough Square Reserve on a day-to-day basis in line with statutory requirements and other Council plans, including this management plan.

7.2 Management Policies

7.2.1. Maintaining Reserve Boundaries

1. The boundaries of the reserve will be maintained and no encroachments will be permitted.

7.2.2. Vegetation maintenance

1. Health of the plantings on the site will be monitored by Council, and maintenance or replacement of plantings will be undertaken where necessary.

7.2.3. Funding

1. Funding for maintenance programmes, ongoing protection, development and enhancement programmes will be identified in the Annual Plan and Long Term Plan.
2. All programmes will be prioritised and funded when opportunity allows.

3. Alternative sources of funding (other than rates) and other means of implementing programmes will also be considered. Examples of alternative sources include, but are not limited to:

Grants (e.g. New Zealand Lottery Grants, Eastern and Central Community Trust)

Funds arising from bequests

Work schemes

Community fundraising

Sponsorship

Sale of surplus land (subject to the provisions of Reserves Act 1977)

Donations

7.2.4. Bylaws

1. The South Wairarapa District Council Bylaws will apply to the management of the reserve.

7.2.5. Events

1. Events and activities that comply with this Management Plan will be encouraged and promoted.

7.2.6. User Charges

1. Entry to the reserve will generally be free but charges may be made for commercial activities and concessions. Charges may be made for access to the museum and events in the town hall and for other special events.

7.2.7. Information and Promotion

1. Onsite interpretation of the historic / recreational/ botanical values of the reserve will be put in place as priorities and resources allow.

7.2.8. Recreation Monitoring

1. The impact from recreation activities will be assessed from time to time to ensure there are no adverse effects on the reserve.

7.3 Management Rules

7.3.1. Smoking

1. Martinborough Square is subject to Council's District-wide smoking policy for parks and reserves.

7.3.2. Bylaws

1. The South Wairarapa District Council Bylaws will apply to the management of the reserve.

7.3.3. Hours of use

1. The public shall be able to use the reserve between the hours of dawn and dusk. Any use outside of these hours is prohibited, unless approval has been provided by Council's Chief Executive.

7.3.4. Events

1. An event that involves exclusive use of the reserve, the sale of goods, or is not covered by this Management Plan, will require specific approval under this Management Plan before it can proceed. Specific approval means the approval of the Council or Chief Executive.
2. For major events on the reserves that impact beyond the reserve areas and affect traffic movement, parking, public health and safety, and may cause inconvenience to residents and local retailers, the promoter must provide information on how these matters may be addressed. Depending upon the size and scale of the event Council may consult with key interest groups.
3. An event organiser or user of the reserve shall be responsible for returning the reserve to its existing state and repairing any damage to the reserve (other than normal wear and tear) caused as a result of any event or use. This repair shall be to the satisfaction of the Council's Roading and Reserves Manager.
4. A refundable bond may be required from organisers of an event to cover repair of any damage to the reserve used where this is required under the guidelines or as a condition of resource consent.

7.3.5. Signs

1. The only permanent signs permitted on the reserve are those providing visitor information, information about facilities and features related to the reserve site, plaques as approved by Council and traffic signs. Such signs should be placed on existing structures wherever possible to avoid a proliferation of sign posts.
2. Temporary signs advertising specific events (those displayed only for the duration of the event they advertise) shall be allowed on the reserves.
3. Any other signs that are not covered by 1 and 2 above will require Council approval.

7.3.6. Pedestrian and Vehicle Access

1. Vehicles are not permitted on the grassed area of Memorial Square except under strictly controlled circumstances for events or in emergencies.

7.3.7. Utilities

1. No new utilities shall be located on the reserve.
2. Where it is necessary to have existing utility services located above ground, the design and location should be sympathetic to the natural, cultural or landscape features of the reserve and not impact on the area available for recreational use.
3. Utility operators can access the Square for the operation and maintenance of existing network utilities within the reserve, subject to the provisions of this Management Plan and notification to the Council.

Deleted: 1

Deleted: 1

Deleted: All new utilities shall only be located on the reserve where there is no alternative location on any other site

Formatted: Highlight

Deleted: <#>Applications for the construction of public utilities on the reserve must be made to SWDC under this Plan. Such applications must be publicly notified for comment under this plan. Applications must be accompanied by an assessment of the effects of the utility on the reserve and must take into account: ¶
<#>Alternative sites ¶
<#>The selected location ¶
<#>Timing and duration of the works ¶
<#>Impact on cultural heritage sites, trees and amenity values and buildings and how these are to be protected ¶
<#>Where not a Council utility, consideration should be given to seeking a ground rental ¶

Formatted: Bullets and Numbering

Formatted: Font: Verdana, 11 pt

Formatted: Font: (Default) Verdana, 11 pt

4. Consultation shall be required with utility operators prior to the planting of any vegetation within the vicinity of underground electricity cables or similar.

Formatted: Font: Verdana, 11 pt

Formatted: Font: (Default) Verdana, 11 pt

5. Activities and development within Martinborough Square shall not generate adverse effects (or reverse sensitivity effects) on existing infrastructure.

Formatted: Font: Verdana, 11 pt

Deleted: Any approval given for a public utility on the reserve shall be conditional upon the Council being able to:¶
Enter, inspect, require maintenance or upgrading¶
Approve designs and colour schemes for all structures¶
Require the restoration of sites after the completion of work¶
Require sites to be cleaned up, cared for, and superfluous material removed¶

7.3.8. Dogs

1. Dogs must be on a leash and under control at all times.
2. Dog litter must be removed from the reserve by the dog owners.
3. Any changes to Council's dog policy will have precedence over 1 and 2 above.

7.3.9. Recreation Monitoring

1. The Council may modify or stop activities that cause environmental degradation or significant modification or nuisance, including nuisance to adjoining properties.

7.3.10. Fires

1. No fires are permitted within the park unless approved by the Chief Executive.

7.4 Asset Management Objectives

- 7.4.1. To ensure public health and safety are met.
- 7.4.2. To ensure the reserve area functions effectively and is maintained in an appropriate manner.

7.5 Asset Management Policies

7.5.1. General

1. The reserve will be given high priority by the Council in its maintenance programme.
2. The Council will review the current levels of service in the Asset Management Plan (AMP) to ensure the appropriate maintenance standard for services and facilities are provided on the reserve.
3. The AMP and the Council's Reserves Contract Agreement will be reviewed to ensure they are in accordance with this Management Plan.
4. Any maintenance work carried out by the community will be done within an agreed framework and within the Council's financial planning and budgetary framework.

7.5.2. Toilets

1. Existing toilets will be maintained to a high standard.
2. Organisers of events may be required to provide portable toilet facilities.

7.5.3. Rubbish

1. Rubbish bins will be kept to a minimum and priority will be placed on removal of litter from the reserve.
2. The standards of litter management will be monitored to ensure the reserve remains clean and tidy.
3. Organisers of events will be responsible for rubbish during events and removal of rubbish after events.

7.5.4. Public Safety

1. The Council will identify hazards affecting the reserve and take appropriate precautions to minimise risks through the provision of information.
2. The Council will provide for the safe use of pesticides and other chemicals used in its management operations.
3. Following an initial maintenance up-grade, the trees in the reserve will be assessed from time to time (and following storm damage) by an arborist for their health and longevity, and remedial work will be programmed into reserve maintenance.

7.6 Asset Management Rules

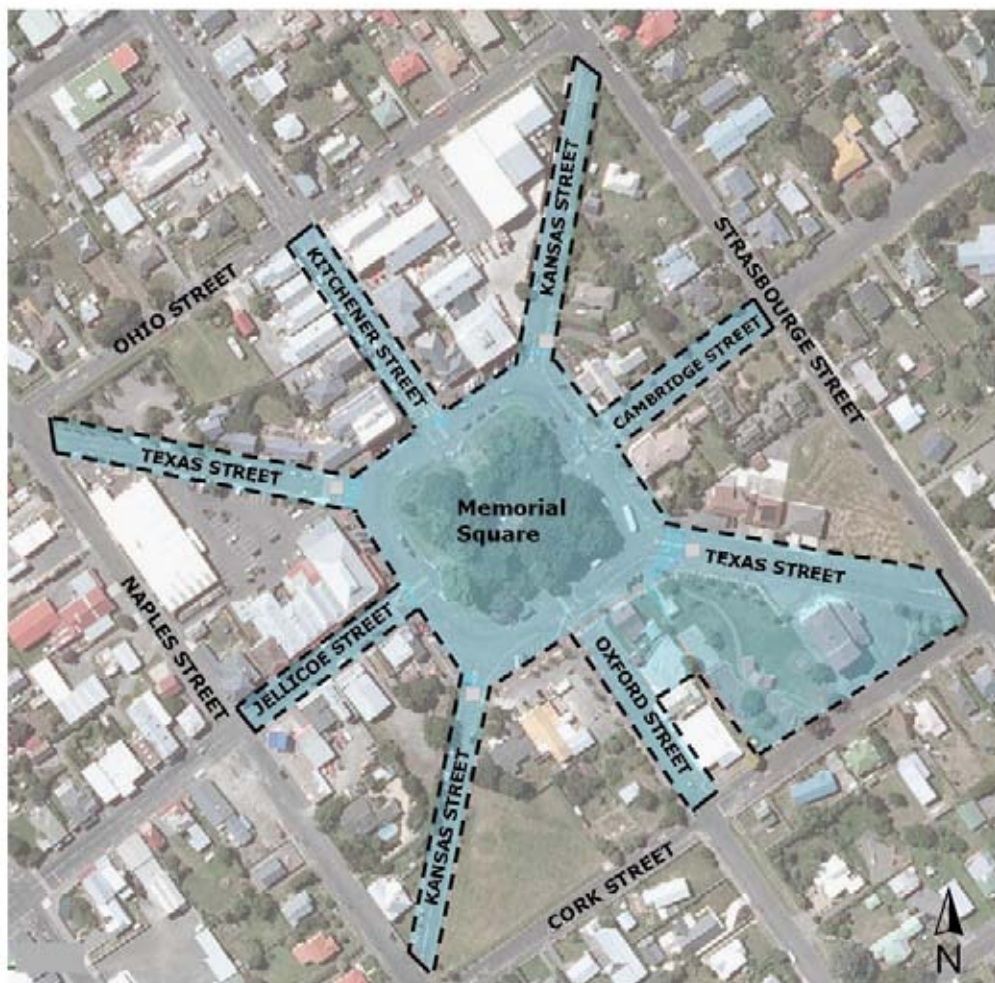
7.6.1. Public Safety

1. Unauthorised damage to, or removal of, plant material is prohibited.
2. Spraying will only be carried out by Council approved and certificated operators.
3. Ground marking can only be carried out with the approval of Council's Roading and Reserves Manager.

7.6.2. Rubbish

1. Rubbish shall not be dumped on the reserve by any member of the public.

Appendix 1 – Extent of Martinborough Square Management Plan



Formatted: Centered

Note: The reserve boundaries include the road berms within the reserve area.

Deleted: ¶

MARTINBOROUGH SQUARE DEVELOPMENT PLAN



DRAFT

MARCH 2012



Martinborough township was established between 1881-1885 as a private land development by John Martin. The centre of the township was designed in the shape of the Union Jack with streets radiating from the central square named after places that Martin had visited on an overseas tour. Martinborough has a distinctive character which derives in part from the number of historic buildings that have been carefully restored.

This Development Plan supports the Management Plan. It will be reviewed every five years (concurrently with the Management Plan review). The Development Plan will be implemented by council and the community as funds allow. Each year council will prepare an annual programme of work. This will be considered as part of the Council’s Draft Annual Plan.

Five areas of focus

Martinborough Square currently functions well as a public open space and does not need redesign. However, with some relatively minor changes it could be improved in terms of its landscape appeal and its use. This Development Plan proposes 5 areas that will assist in improving the amenity value and functionality of the square. These 5 project areas of focus are:

- Museum and Surrounds
- Boer War Memorial
- Promenade
- Trees
- Design Elements

For each of these areas, high quality elements that are designed to be enduring in terms of style and quality of materials will be selected to improve the amenity value of the area.

Setting the Scene

Martinborough Square is the town’s pre-eminent area of open space and provides a hub for the community. In the centre of Memorial Square is the Boer War Memorial. Views down the four main streets (Kitchener St, Jellicoe St, Cambridge St and Oxford St) are orientated towards this memorial.

Located around the outer edge of Memorial Square are several heritage buildings. These buildings help to give definition and enclosure to the square. While most sides of the square have buildings defining their edges, the eastern corner of the square is not well defined.

The lack of seating and other elements to draw people into the centre of the square mean that the square is not used to its full potential.

The dense canopy of the trees in Memorial Square limits the amount of light and reduces the visual and physical accessibility of the square.

Much of the furniture and amenity facilities such as the toilet block have become rundown and appears out of character with the rest of the square.



1. Museum and Surrounds

It is proposed to relocate the courthouse from Cork St to a site between the museum and playground, and erect a new toilet block between the courthouse and museum.

2. Boer War Memorial

The planting around the Boer War Memorial in the centre of Memorial Square is out of scale with the memorial and the trees surrounding it. A more appropriately scaled planter box and associated seating will help to encourage greater utilisation of the space.

3. Promenade

It is proposed that a pedestrian promenade be created around the edge of Memorial Square by extending the footpath on the inner edge.

4. Trees

Many of the trees in Memorial Square are in poor health and in need of maintenance. A report on the current health of the trees and maintenance work required has been compiled by a local arborist. It is proposed that the trees will be regularly maintained and where necessary, removed to encourage growth in the remaining healthy trees in accordance with the specifications detailed in this report.

5. Design Elements

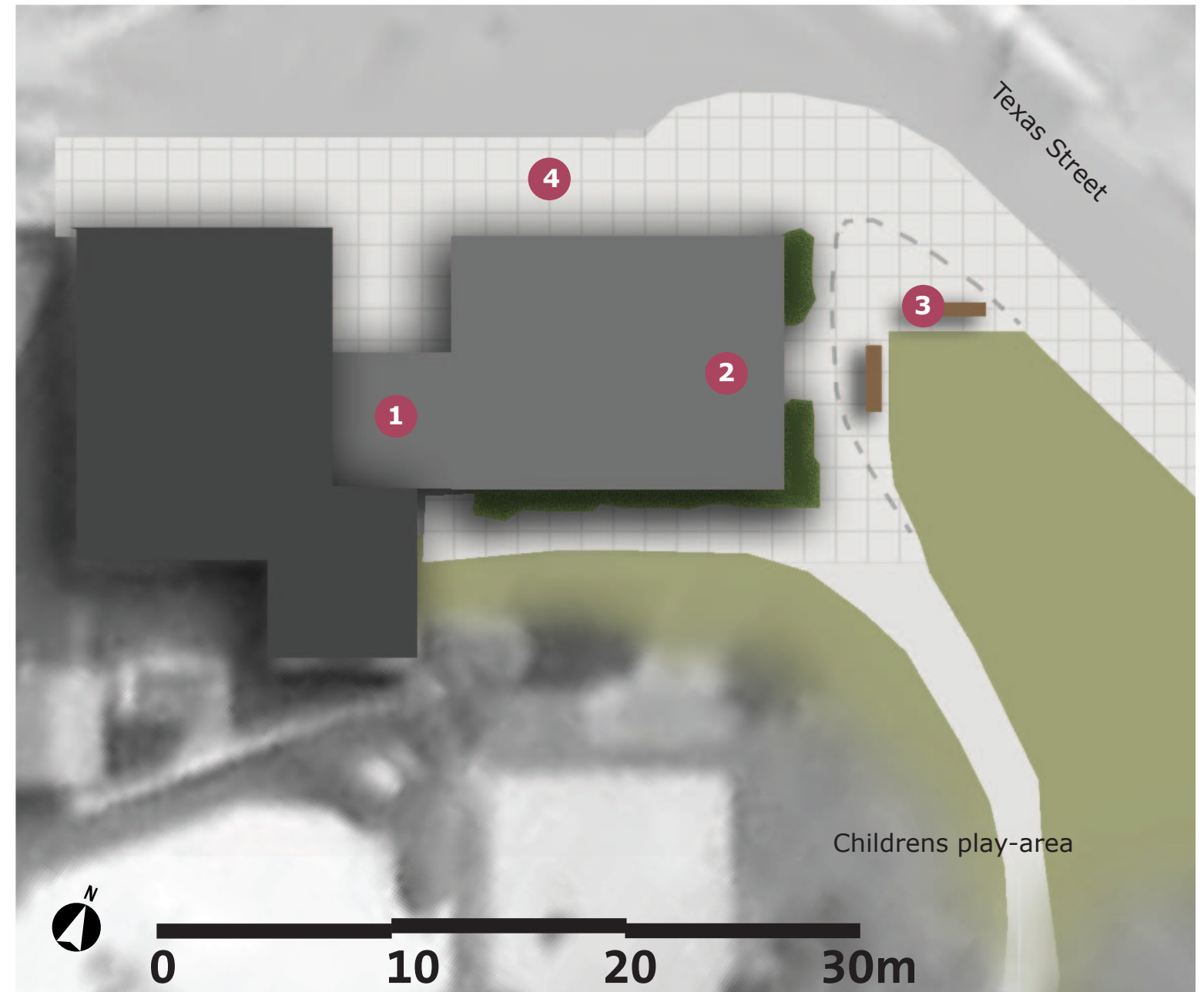
In addition to these five areas, several other design elements will be incorporated into the square - seating, interpretation panels, lighting, and picnic tables.



Linking Memorial Square to the Museum



View from the west looking towards the Musuem and the relocated courthouse.



- 1 Toilets replaced and located adjacent to, and can be accessed from, play area and Memorial Square
- 2 Court house relocated to create a strong edge on the south-western corner of the Square
- 3 Entry to children's play area is marked with seating and an interpretive panel provides information about adjacent courthouse
- 4 Alternative pavement treatment to promote a strong pedestrian connection

BOER WAR MEMORIAL

DRAFT

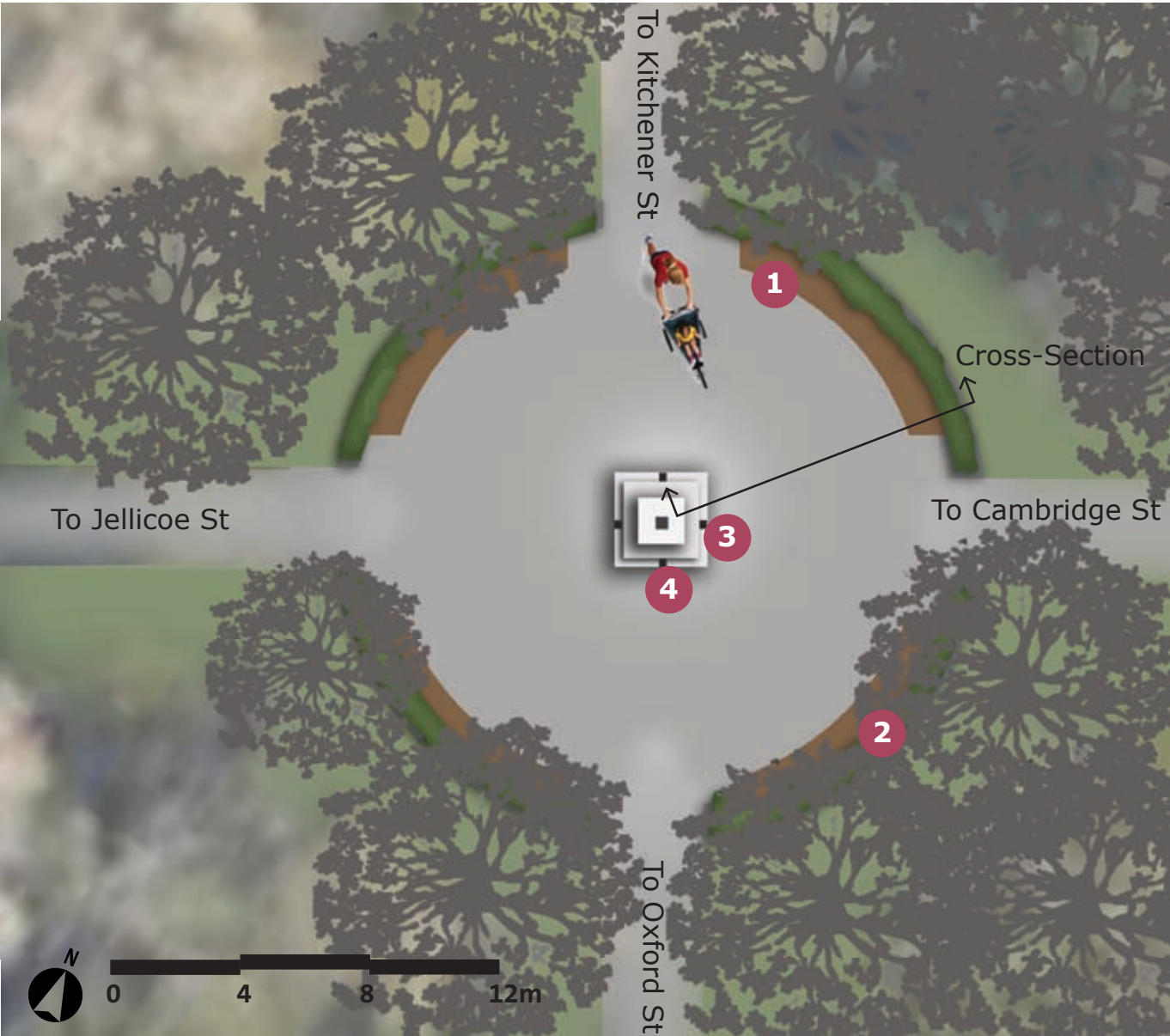
Enhancing the Boer War Memorial day and night



View from World War I gates looking towards Boer War Memorial



Cross-Section through Boer War Memorial and surrounding seating and flower beds.



- 1 Seating provided adjacent to the Boer War Memorial
- 2 New taller concrete planter will create a stronger edge whilst still allowing views and ensuring safety.
- 3 Plinth to Memorial to be replastered
- 4 Inground uplights to be create focus at night

PROMENADE

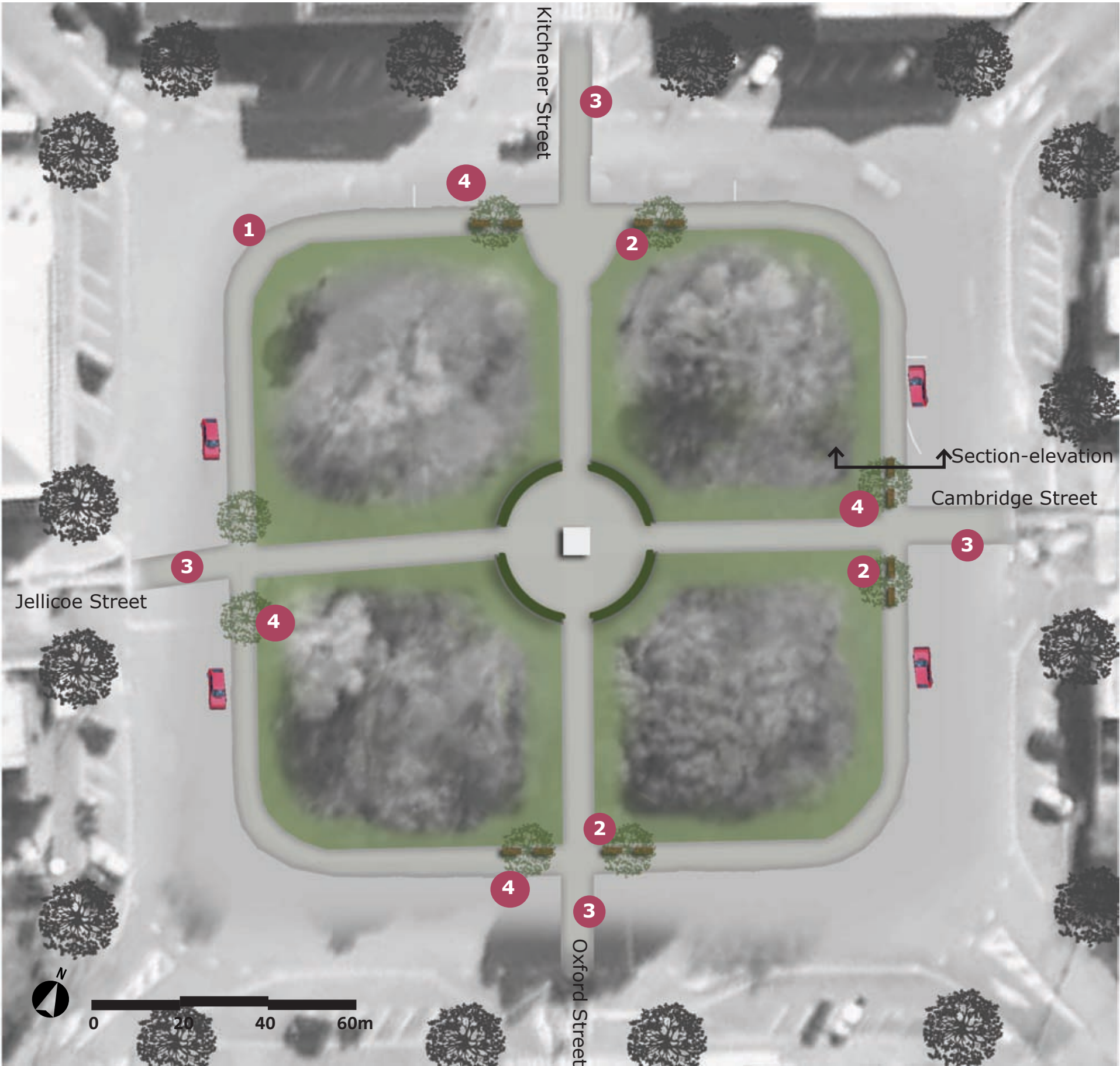
DRAFT

Improving pedestrian use and enjoyment of the Square



Section elevation through promenade showing seating.

- 1 Footpath extended inwards by 2m towards treed area to create a promenade using an alternative pavement treatment
- 2 Seating adjacent to main pedestrian entry points and setback from promenade
- 3 Pedestrian crossing paved using same treatment as promenade to visually draw people into the square.
- 4 Small specimen trees located at either side of the entrances to the square act to emphasis the main axis through the square.





Wide seating similar to above in addition to picnic tables can be used a variety of ways.



Seating around Boer War Memorial

The seating around the Boer War Memorial cantilevered off the planter



Picnic Tables

Proposed picnic tables within Memorial Square.



Lighting

The Boer War Memorial and the World War II Memorial Gates uplit with inground lighting such as ETC 130 Inground Uplights produced by *we-ef lighting*.



Tree Grates and Guard

Tree grates and associated tree guards will be used to protect new street trees.



Interpretation

Interpretation panels around the square providing information about the history of Martinborough and the historic buildings.