

Gluepot progress photos

August 2023



Grading to even out the damaged road following filling



Trucks carried in countless cubic metres of material to fill slumped sections



Sandbags used to backfill slumps before the road can be filled up and graded



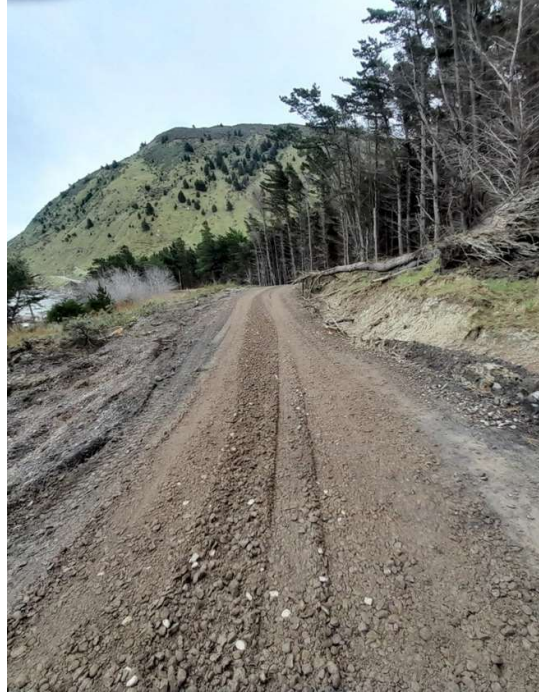
Filled sections



Deteriorating road base evident from the banks



Further damage from the elements visible along another segment of the road



Starting to look like a useable road again



Newly graded filled section

