



What can go in South Wairarapa kerbside recycling

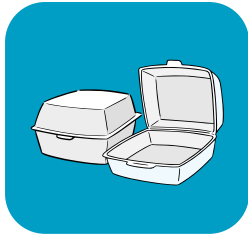
Items listed below can be recycled as long as they are clean and the lids are removed



Plastics Kirihou Grocery packaging only, such as:



Drink and milk bottles
(no lids)



Clean food containers



Bottles & containers from
your bathroom, kitchen
or laundry (no lids)

Glass Karaehe



Clear & coloured glass
bottles & jars

Paper and Cardboard Pepa kārī mārō



Snack boxes & toilet
paper rolls

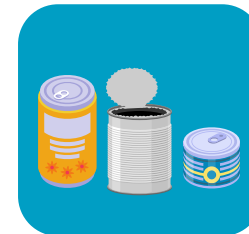


Office paper, domestic
junk mail, newspapers
& magazines



Flattened cardboard
boxes, includes pizza
boxes (remove scraps)

Tins and Cans Kēne



Aluminium drinking
cans, steel food & pet
food tins

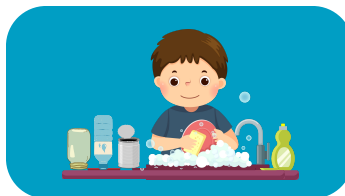
How to prepare your recycling



Check plastic grocery bottles
and containers for the
numbers 1, 2 or 5



Remove all lids, triggers
and pumps



Rinse all plastics, tins, cans
and glass



Flatten all cardboard boxes



What can't go in South Wairarapa kerbside recycling



Squashed plastic, tins
and cans



Container and bottle
lids, triggers & pumps



Items smaller than a
credit card ie shredded
paper and bread tags

Other items that can't be recycled include:

- Lined containers ie Tetra pak
- Plastic numbered 3, 4, 6, 7 or no number
- Food or items still containing food
- Coffee cups
- Non-grocery items ie toys
- Compostable packaging
- Containers larger than 3L
- Inflammables ie aerosols gas cylinders
- Sharps i.e needles

For more information visit:

swdc.govt.nz/services/rubbish-and-recycling/