

Looking South

October 2012



A Message from the Mayor

Proposed changes to the main law which regulates councils, the Local Government Act, are expected to pass through Parliament by the end of the year. The changes have major implications for local government, especially in the area of reorganisation or amalgamation as it is commonly described.

The Wellington Region which currently includes the Wairarapa is 'of interest' to the government. Amalgamation has been described to us as "an approaching bullet which you cannot collectively dodge."

The three Wairarapa Councils have been looking closely at options for the Wairarapa and this includes evaluating our current relationship with Wellington through the Greater Wellington Regional Council. There is no doubt that it is a very complicated matter and it has been a big task getting meaningful information so that the public can make informed decisions. One thing is clear though and that is it is increasingly difficult to justify having three small councils in the Wairarapa. As we have common interests and administer the same legislation there is definitely money to be saved by combining the organisations. There are other councils in New Zealand with a similar population as our Wairarapa combined total that administer multiple communities. Kapiti and Tasman are two examples. How Wairarapa fits into the bigger regional picture is the challenge.

The Wairarapa councils fully intend to consult with their citizens. As soon as we have all the information you need to make meaningful and informed decisions then we will begin the conversation.



Adrienne Staples
The Mayor

New service contract with City Care Limited

SWDC is pleased to announce it has signed a new utilities and facilities service contract with City Care Limited, which commenced on 1 October 2012.

City Care is a leading provider of construction, infrastructure and facilities management in New Zealand. Their proven success with 15 other councils, and their established expertise and equipment, gives SWDC the ability to improve its services to ratepayers. City Care's new contract with us is for the following areas:

- ◆ 3 Waters: Waste water treatment facilities & infrastructure, potable water treatment facilities & infrastructure and water races.
- ◆ Facilities Management: Maintaining pools, parks, buildings and cemeteries.



request into the CEM while out in the field - using a mobile phone or tablet - or by using a PC at their desk. The request will go directly to the contractor. Updates on the job status are communicated in real time by text or email until the job is complete. All of the job requests and updates are tracked and saved within the CEM system for greater transparency and traceability.

Mark Allingham, Group Manager Infrastructure & Services said, "Residents can be kept in the loop as well. If you contact Council with a repair request and leave your mobile number or email address, the progress updates will be sent to you too."

Not only will we experience improved service communications, there will be an increase in collecting asset management data. Repairs and upgrades made to council assets (like water or sewer mains) can be remotely uploaded to our GIS, ensuring Council records are accurate and up to date. Improvements like these will help Council's decision making in the future.

City Care and the CEM tool was in place as of 1 October 2012 with planned enhancements as the contract transitions over the next three months.



Council's previous contract had been in place for 21 years, initially with Serco, who were later acquired by Transfield Services. Moving to City Care therefore presents a substantial change in how we do things and involves a huge leap in technology. Where we used to have a fairly complex system for assigning work to the contractors, we can now do it electronically in virtually one step.

City Care's "Customer Event Manager" (CEM) online platform links the public, Council and contractors all in one dynamic tool. Council staff can log a job

Pools open on 1 December 2012

South Wairarapa District has three seasonal pools that open for the summer. City Care now manage our three district pools on behalf of Council. The pools will be open every day through summer except Christmas Day and the season will close on 17 March 2013.

Featherston Pool

Located in Johnston Street, Featherston
Ph: 06 308 9665

Opening hours:

Mon – Fri during school term: 2:00pm – 5:15pm
Weekends: 1:00pm - 5:30pm
School and public holidays: 1:00pm – 5:15pm



Martinborough Pool

Located 1-13 Princess Street, Martinborough
Ph: 06 306 9719

Opening hours:

Mon – Fri during school term: 2:00pm – 5:30pm
Weekends, school and public holidays: 1:00pm – 5:30pm

Greytown Pool

Located 11-55 Kuratawhiti Street, Greytown
Ph: 06 304 9084

Opening hours:

Mon – Fri during school term: 2:00pm – 5:30pm
Weekends, school and public holidays: 11:00am – 5:30pm

Prices 2012/13

Price

Adult	\$3.00
College Students	\$2.00
Child 12 yrs and under	\$2.00
Adult accompanying child under 8 yrs and not swimming	no charge
Adult concession card (10 entries)	\$15.00
Child/student concession card (10 entries)	\$10.00
Schools/swimming clubs (ring Council on 06 306 9611)	negotiated

“Warm Up New Zealand: Heat Smart” Project Update

If you have not taken advantage of this great Heat Smart project then keep reading.

ALL houses built in NZ before the year 2000 qualify for 33% discount capped at \$1300 off the insulation of their home. Assessments are free and come with lots of handy hints on keeping your home warmer, drier and your family healthier.

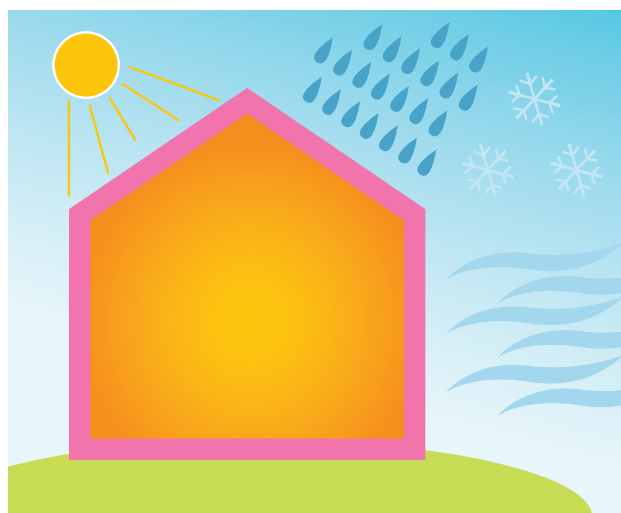
Homes where the home owner or tenant, hold a current CSC or Gold Card endorsed CSC, qualify for extra subsidies. These extra subsidies include third party funding from the Wairarapa Healthy Homes Project supported by the South Wairarapa District Council.

Total payment for CSC home owners and tenants are less than \$1150.00, and in some cases free. There are 4 different allocation amounts available within this project-conditions do apply.

ALL home owners can access funding help through their Wellington Regional Rates (up to \$2600.00) or local bank

with repayments as little as \$7.00 per week.

Talk to us now or book your free assessment with Lyn Tankersley, EnergySmart Wairarapa 06 370 1019.



Library News

The Martinborough Library has been operating out of “the Kabin” in the Pain & Kershaw car park for some weeks as we look to find a long term accommodation alternative. While first impressions may be that the Kabin is a bit cramped surprisingly it’s home to 2400 new or recently acquired books. There are two new shelves to keep an eye out for: ‘Quite interesting books’ and ‘Books to tickle your fancy’.

October should see the introduction of our Books to Babies running through Plunket in each of our three libraries. This will see that every newborn in the South Wairarapa will receive a board book, library membership

form and information on how good books are for young minds. This project is funded by SWDC and the Lioness Group and our thanks to both for bringing this scheme on board.

Recently acquired for each library, is a Victor reader which is a CD player especially designed for those with hearing and visual difficulties. These will be in the libraries for a short while for customers to see and handle before they are available to borrow. It really is business as usual at all three libraries and we look forward to seeing all our regular, lovely customers as well as welcoming many more.

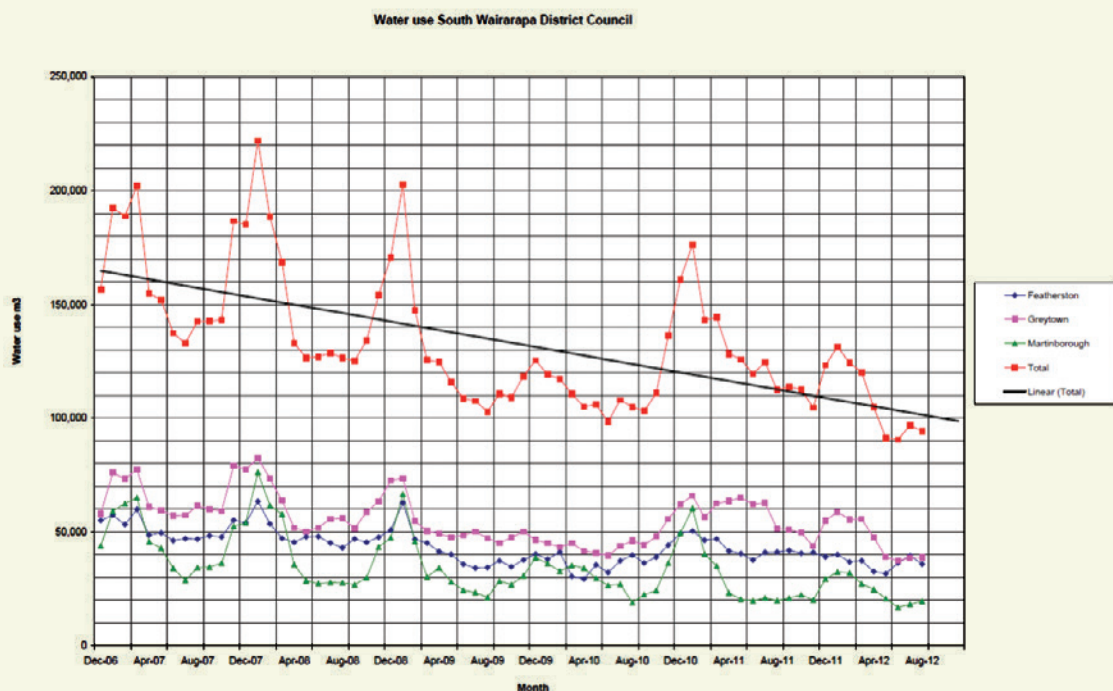
Water use

It’s been over three years since the introduction of water meters and you are perhaps wondering how we as a district are tracking in terms of reducing our water use.

The data we used to illustrate the improvement in usage is all based on monthly water use from January 2007 to August 2012.

- ◆ From January to August 2012 the district has had the lowest consumption when compared to equivalent periods since 2007.
- ◆ Every monthly water use for the last 12 months has been lower than the average for that month across the past 6 years.
- ◆ The water use for the last 12 months is 18% lower than the average annual consumption for the last 6 years.
- ◆ Largest reduction in water consumption is in Martinborough.

Since the installation of water meters commenced in 2007 water usage across the district has reduced by over 20%.



Rebates 2012/13

The Rates Rebate Scheme provides a rebate of up to \$590 for low income earners who were paying rates for the home in which they were living on 1 July 2012.

- ◆ Your rebate will be calculated based on your income, rates and the number of dependants. The income eligibility for a rebate is \$23,650
- ◆ However if your income exceeds this amount you could still be entitled to a rebate depending on the total cost of your rates and number of dependants.
- ◆ Application forms are available from the Featherston and Greytown Libraries as well as the Council office.

Would you prefer to receive your rates by email?

We now have the facility to send rate demands by email. If you wish to receive your rate demand by email please email rates@swdc.govt.nz, and we will add your details to our database.

We encourage you to take up this option, some local authorities have up to 20% of rate demands delivered by email and at 70c per envelope the savings are considerable and of benefit to all.

Rates 2012/13 Instalment Two

Enclosed with this newsletter is the second rates assessment/invoice for the rating quarter 1 October – 31 December

**The last day for payment is
20 November 2012**

Please pay by this date to avoid the 10% penalty.

Further information about rates are included in "Part B" insert which accompanies this instalment.

Payment by direct credit is welcomed. Please help us to process these payments by including the property (RID) number for all properties you are paying.

Direct Debit Forms

We included with the last Rates Notice a direct debit form hoping to encourage ratepayers to consider this method of rates payment, if not already signed up. Direct Debit is the cheapest way to pay your rates as we withdraw the funds directly from your bank account at the very last minute. That way you get the benefit of your funds for the longest possible time.

If you have not had the opportunity to do so but would like to pay by Direct Debit please complete

and return that form to us. If you have not kept the form we sent, just contact us by phone or email/post or drop in to one of our service centres to arrange to complete the required form.

We are very pleased with the response to our last notice about paying by Direct Debit with 200 additional ratepayers signed up. Our thanks to all those who pay by this method as administratively it is easier for us and means you not having to stress about paying on time.

GET IT SORTED

To South Wairarapa District Council, P.O. Box 6, Martinborough 5741

From:

Name

Surname

What's the Problem

Where Exactly?

Street, Road, Number