



April 2012

Looking South

Draft Long Term Plan

The South Wairarapa District Councillors and Council Officers have been busy working on producing the Draft Long Term Plan (LTP) for the period 2012-2022. This document provides the proposed direction for Council over the next ten year period and it describes the services that Council will provide and how it will fund them over the time period covered by the Plan. At a time when there are directives from Government for Councils to focus on core services and to be fiscally responsible SWDC can justifiably claim to be a no-frills Council. The Council is focused on providing core services to the community it serves. Its key issues are roading, wastewater treatment and disposal and water supply. It also provides and maintains amenities such as libraries and swimming pools in each of the three towns as well as the public buildings.

Council is faced with a number of challenges as it prepares the Draft LTP. One of the main challenges is the treatment and disposal of waste water. This has the potential to be a significant expense to the District during the period of this LTP and beyond. The provision

of alternative water supplies within the District brings challenges and costs that have to be met. The future of the Martinborough Town Hall is another issue that will be addressed in the LTP as Council works towards finding a solution to the question of what is to be done with the earthquake prone building.

Council's regulatory operations in resource management, public health and building control continue and the LTP describes how these activities will continue to be carried out and funded.

The Draft LTP describes the Council's commitment over the next ten years to the provision of services and it provides the community with an opportunity to have its say through the consultation that is an integral part of the process.

Council will adopt the Draft LTP at a Special Council Meeting on 24 April. That Draft Plan will be published in the 2 May edition of the Wairarapa News.

Submissions on the Draft Annual Plan will close on 29 May 2012 at 5.00pm.

Dr Jack Dowds
Chief Executive Officer



A Message from the Mayor

On the 19th of March the Government released a paper 'Better Local Government' which outlined its proposed reforms for our sector. The paper created a huge outcry from councils across the country for two reasons. Firstly, it proposes removing the right for a community to have the final say over its governance arrangements and secondly, because the figures quoted in it for council debt levels were so grossly inaccurate that part of the paper was withdrawn stating 'human error'. There is no doubt however that some of the changes could enable us to examine how we do business and perhaps come up with arrangements different to what we have now that will deliver superior service to our residents. The three Wairarapa Councils have already commissioned a study to look at service delivery and governance options for our combined districts. This document cannot possibly provide all the answers but will give us a sound basis for discussion with our residents and ratepayers. This is good and I think it is high time we thought outside the square on how we deliver local government services to our ratepayers. At the end of the day however communities must have the final say on their destiny. Any attempt to remove this right must be fought against with gusto.

Nick Smith has fallen on his sword. His statement that 'Councils will be encouraged to see the advantage of being part of bigger organisations' may now be tempered somewhat given that if this statement is taken to its logical conclusion then New Zealand should amalgamate with Australia.

Adrienne Staples
The Mayor



Attention all Pre Schoolers

Come and join us for some fun at the library.

Bring your mum or dad and join the other pre-schoolers at any or all of the following term-times:

Martinborough Library	Tuesday	10 - 11	books and music
Featherston Library	Tuesday	10 - 11	books and craft
Greytown Library	Thursday	10 - 11	books and craft
Martinborough Library	Thursday	10 - 11	books with PORSE



Our children's books are constantly being updated and new stock added to keep those little minds constantly busy. Adults too can expect, and find, new books of all sorts flooding in.



Martinborough Library,	Jellicoe Street	306 9758
Featherston Library,	Fitzherbert St	308 9030
Greytown Library,	Main Street	304 9061

Library hours:
Mon-Fri: 09.30-5.00 | **Sat:** 10-12 | **W:** wls.org.nz
E: martinborough@swdc.govt.nz | greytown@swdc.govt.nz
 featherston@swdc.govt.nz

Featherston Water Supply

The South Wairarapa District Council is aware that Featherston residents have experienced more than their share of scheduled and unscheduled interruptions to their water supply over the past months. We are working on long term solutions and seeking to minimise further interruptions but as these may still occur we want to acknowledge the continued co-operation of householders when changes need to be made.

Council is currently investigating the possibility of providing Featherston with a new alternative water supply from bore water near the Tauherenikau River.

A local contractor has been awarded this contract and test drilling to check for sufficient water volumes will get under way in April.

The success or otherwise of this programme will determine how the Council moves forward.

If successful, the Council will look to drill permanent bores to supplement the supply to the Greytown Ultra Filtration (UF) Plant or go for a standalone source at a location south of the Tauherenikau River.

If unsuccessful, the Council will look at options to upgrade the Boar Bush and UF Plant infrastructure to achieve a closer compliance with the New Zealand Drinking Water Standards 2008.

Government assistance will be sought to provide funding for this project if possible.

Waste Water Martinborough and Featherston Wastewater

New resource consents for wastewater discharges at the Martinborough and Featherston sites are currently being sought. These are short-term bridging consents that will give time to fully develop the Council's longer-term plan and make further decisions about treatment and disposal options.

The Council's next step will be to complete trials of new treatment technology to further improve effluent quality. Options for securing land that can be irrigated with treated effluent will be explored within two years at all sites, and the first stage of repairs to damaged sewer pipes and property connections completed.

With the recent installation of new ultra violet (UV) technology at the waste water treatment plants in Featherston and Martinborough, the quality of wastewater discharged into two South Wairarapa waterways has improved dramatically.

Testing since the UV systems were installed last December has shown significantly lower levels of

potentially harmful bacteria in water discharged into the Ruamahanga River near Martinborough and Donald's Creek in Featherston.

The results show that there is now minimal microbiological impact from the discharges of the two wastewater plants. The levels are within the requirements for recreational contact such as swimming and are inside the consent limits at Martinborough.

Installation of the UV systems is just the first step of a major long-term council project to collect, treat and discharge treated wastewater to protect public health and minimise effects on the environment.

The aim is to progressively reduce and ultimately remove discharges from waterways in a sustainable and affordable way. This is a major project with short, medium and long-term stages which build on each other towards a long-term goal of discharging treated effluent to land.

Wairarapa Healthy Homes Project 2011/12

Home owners with a Community Services Card (CSC) can get insulation done for \$500.00 but conditions do apply.

Home owners and tenants (landlords) without CSC can get up to \$1300.00 off their insulation and can use the rates scheme to help fund this. The home must be built before 2000.

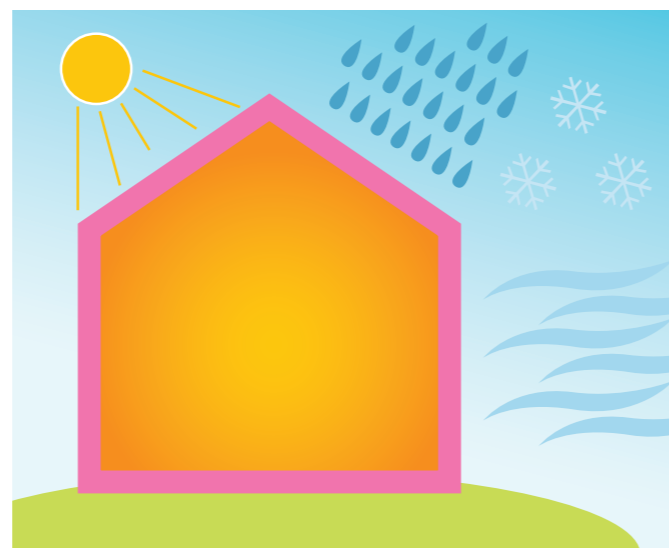
Landlords can get up to 66% off their insulation if their tenants have a CSC.

This scheme is sponsored by the Wairarapa District Councils.

Enquiries about the scheme can be made to Lyn Tankersley, Energy Smart, Masterton 06 370 1019.

A warmer home should reduce power consumption and improve the health of the occupants.

Call Energy Smart today for your free assessment and quote.



A load of rubbish

Thanks for Recycling

Council introduced a new recycling system a year ago and wants to thank all those residents of the South Wairarapa who have 'lightened the load' to the Bonny Glen land fill site. The weights exported to Bonny Glen have shown a significant drop and recycling is certainly growing by the week. Between May 2011 and Jan 2012 there has been a 19% reduction in the amount of waste to landfill, based on the same period the previous year. While Council did not previously record what portion of our waste was recycled, current figures show for the period May 2011 to Jan 2012, 35% of the total waste by weight has been recycled.

Some advice about recycling plastics

Most households have plastic bottles and containers that can be recycled. Generally these are the containers that we use in the bathroom, kitchen and laundry.

Remember to rinse, squeeze and remove the lids before placing in the recycle bin. However while we request the lids be removed we still ask that you place them in the same bin for recycling. While both are plastics and both can be recycled they are different grades of plastic and so their recycled use is not the same. **No Plastics that may have had contaminants please.**

Not all plastic containers are recyclable so please exclude containers that may have been contaminated with oil, fuel, weed killers, etc., or those that are larger than 4 litres capacity.

What do those symbols on plastic containers mean?

The table below is a guide to how plastics are graded and their potential recycled use:

Symbol	Type of plastic	Typical container types	Recycled as
	PET Polyethylene Terephthalate	Soft drink bottles	Pillow and sleeping bag filling, clothing, soft drink bottles, carpet
	PE-HD High Density Polyethylene	Milk, cream and detergent bottles	Recycling bins, compost bins, buckets, detergent containers, posts, fencing, pipes
	PVC Un-plasticised Polyvinyl Chloride PVC-U Plasticised Polyvinyl Chloride PVC-P	Food and cleaning material bottles	Flooring, film and sheets, cables, speed bumps, packaging, binders, mud flaps and mats
	PE-LD Low density Polyethylene	Flexible squeeze bottles	Rubbish bin liners, pallet sheets
	PP Polypropylene	Ice-cream, yoghurt, margarine and Chinese takeaway containers, strawberry punnets	Pegs, bins, pipes, pallet sheets, oil funnels, car battery cases, trays
	PS	Shampoo, conditioner and moisturiser bottles, and dip containers Please note: this does not include the white block material used for packaging	Coat hangers, coasters, white ware components, stationary trays and accessories
	Other Letters indicate ISO code for plastic type eg SAN, ABS, PC, Nylon	Squeezable sauce containers	Car parts, concrete aggregate, plastic timber

But please, NO...

GLASS	PAPER/CARD	PLASTICS	OTHER
NO Light bulbs NO Broken glass NO Window glass NO Mirrors NO Ceramics NO Drinking glasses	NO Painted or Waxed paper NO Wrapping paper NO Drink Cartons NO Tetrapaks	NO Plastic films or bags NO Muesli bar wrappers NO Cereal liners NO Coffee refills NO Oil containers NO Expanded Polystyrene NO Meat trays	NO Disposable nappies NO Food scraps NO Flowers NO Paint and rope NO Cups, plates, saucers NO Toys NO Fibreboard

Draft Long Term Plan (LTP) Meetings

Formal consultation on the Draft LTP 2012/2022 will take place over the period Friday 27 April 2012 to Tuesday 29 May 2012.

Council will be hosting informal public workshops at the following locations to present and discuss the Draft LTP with interested members of the public:

Martinborough: Council Chambers, 7pm, 14 May 2012

Featherston: Kiwi Hall, 7pm, 15 May 2012

Greytown: Greytown Town Centre, 7pm, 16 May 2012

Rural: To be confirmed

You are most welcome to attend and discuss the background and content of this Long Term Plan with Her Worship the Mayor, councillors and community board members.

Direct Debit Forms

We included with the last Rates Notice a direct debit form hoping to encourage ratepayers to consider this method of rates payment, if not already signed up. Direct Debit is the cheapest way to pay your rates as we withdraw the funds directly from your bank account at the very last minute. That way you get the benefit of your funds for the longest possible time.

If you have not had the opportunity to do so but would like to pay by Direct Debit please complete

Rates 2011/12 Instalment Four

Enclosed with this newsletter is the fourth rates assessment/invoice for the rating quarter 1 April – 30 June

The last day for payment is 21 May 2012

Please pay by this date to avoid the 10% penalty.

Further information about rates are included in the "Part B" insert which accompanied the first instalment but if you want another copy please contact us, or visit our website.

Payment by direct credit is welcomed. Please help us to process these payments by including the property (RID) number for all properties you are paying.

and return that form to us. If you have not kept the form we sent, just contact us by phone or email/post or drop in to one of our service centres to arrange to complete the required form.

We are very pleased with the response to our last notice about paying by Direct Debit with 200 additional ratepayers signed up. Our thanks to all those who pay by this method as administratively it is easier for us and means you not having to stress about paying on time.

GET IT SORTED

To South Wairarapa District Council, P.O. Box 6, Martinborough 5741

From:

Name

Surname

What's the Problem

Where Exactly?

Street, Road, Number