



Martinborough Community Board

Minutes 16 July 2012

- Present:** Heather Gibbs (Chair), Jo Guscott, Adi McMaster, Cr Max Stevens (from 7:45pm) and Cr Julie Riddell.
- In attendance:** Mark Allingham (Group Manager Infrastructure and Services) and Suzanne Clark (Committee Secretary).
- Conduct of Business:** The meeting was conducted in public in the South Wairarapa District Council Chambers, 19 Kitchener Street, Martinborough on Monday 16 July 2012 between 7:00pm and 8:35pm.

PUBLIC BUSINESS

1. APOLOGIES

MCB RESOLVED (MCB 2012/35) to receive apologies from Pam Colenso, Mayor Adrienne Staples and Dr Jack Dowds.

(Moved Gibbs/Seconded Cr Riddell)

Carried

2. CONFLICTS OF INTEREST:

No conflicts of interest were declared.

3. PUBLIC PARTICIPATION:

3.1 Kev Rickey – Martinborough Swimming Pool

Mr Rickey requested Council develop a maintenance plan to keep to Martinborough Pool up to standard. Mr Rickey asked that Council consider enclosing the pool to enable the facility to be used year round. He envisioned this would encourage a swim school to start in Martinborough from which funds could be obtained to help cover running costs. Mr Rickey suggested Council review the Tauranga model as an example.

4. ACTIONS FROM PUBLIC PARTICIPATION

The Group Manager Infrastructure and Services advised that consultants had been commissioned to provide an independent report on the district pools including prioritisation of necessary maintenance. The Community Board elected to wait until the report was available before making any financial decision regarding the pool.

DISCLAIMER

Until confirmed as a true and correct record, at a subsequent meeting, the minutes of this meeting should not be relied on as to their correctness

5. COMMUNITY BOARD MINUTES/EXPENDITURE:

5.1 Martinborough Community Board Minutes – 11 June 2012

MCB RESOLVED (MCB 2012/36) that the minutes of the Martinborough Community Board meeting held on 11 June 2012 be confirmed as a true and correct record.

(Moved Guscott/Seconded McMaster)

Carried

5.2 Matters arising

There were no matters arising.

5.3 Action items from previous meeting

The Community Board reviewed the action items and updates were provided.

5.4 Income and Expenditure Statement to 31 May 2012

MCB RESOLVED (MCB 2011/37) that the Income and Expenditure Statement to 31 May 2012 be received.

(Moved Cr Riddell/Seconded McMaster)

Carried

6. OPERATIONAL REPORTS – COUNCIL OFFICERS

6.1 Officers Report

The Community Board reviewed the report and the Group Manager Infrastructure and Services answered queries.

MCB RESOLVED (MCB 2012/38) to receive the Officers' Report to Community Boards.

(Moved Gibbs/Seconded McMaster)

Carried

6.2 Pain Farm Accounts and Budget

The Community Board reviewed the report and asked that the Pain Farm Expenditure Protocol be provided to members. Mrs Gibbs asked that members consider projects for spending the funds against the Protocol.

MCB RESOLVED (MCB 2011/39):

1. To receive the Pain Farm Accounts and Budget.

(Moved Gibbs/Seconded Guscott)

Carried

2. Action 390: Provide a report for the next MCB meeting outlining how the In-House Prof Services costs are calculated and what they include; P Crimp

DISCLAIMER

Until confirmed as a true and correct record, at a subsequent meeting, the minutes of this meeting should not be relied on as to their correctness

7. COMMUNITY BOARD/COUNCILLORS REPORTS - REPRESENTATION/COMMITTEES

7.1 Town Centre Committee

Mrs Gibbs expected the Martinborough Square Management Plan to be ratified by Council on the 8 August 2012.

7.2 Considine Park Committee

Mrs Gibbs reported that the Committee was very pleased with how Considine Park was looking after the recent maintenance and improvements and noted that a few trees and shrubs were still to be planted. The Group Manager Infrastructure and Services advised that Powerco had asked to remove the trees along Princess Street as they were interfering with the power lines.

7.3 Town Hall Committee

Cr Riddell expected a meeting to discuss centennial celebrations would be called in the near future.

7.4 Martinborough Playground

Mrs Guscott report that all the new equipment for the playground had arrived and would be installed soon.

7.5 Other Reports

Cr Stevens reported that he had met with the British High Commissioner and discussed plans to have a British car rally pass through Martinborough in February.

The Group Manager Infrastructure and Services explained that the Martinborough Library had been closed to the public as it wasn't feasible to explain the risks of entering the building to every user. Mr Allingham advised that a temporary library would be setup in a portocom building in the Pain and Kershaw car park and that Council would be reviewing all possible options before making a decision on where the Library would eventually be located.

8. FINANCIAL ASSISTANCE

8.1 Martinborough Town Hall Committee

MCB RESOLVED (MCB 2012/40) to grant the Martinborough Town Hall Committee \$1000 to be used to fund a plaque commemorating the centennial and remaining funds are to be applied to the costs of running a celebration lunch.

(Moved Guscott/Seconded Cr Stevens)

Carried

DISCLAIMER

Until confirmed as a true and correct record, at a subsequent meeting, the minutes of this meeting should not be relied on as to their correctness

9. CORRESPONDENCE

9.1 Inwards

From Lachie McLeod to the Martinborough Community Board dated 25 June 2012.

MCB RESOLVED (MCB 2012/41):

1. To receive the tabled inwards correspondence.
2. To grant the Ngawi Rate Payers Association \$1500 towards the costs of the planned plantings and irrigation in Ngawi.

(Moved Cr Stevens/Seconded Guscott)

Carried

Confirmed as a true and correct record

.....**Chairperson**

.....**Date**

DISCLAIMER

Until confirmed as a true and correct record, at a subsequent meeting, the minutes of this meeting should not be relied on as to their correctness

Martinborough Community Board
Action Items
From 16 July 2012

Ref #	Meeting	Date	Action Type	Responsible Manager	Action or Task details	Status	Notes
1092	MCB	21-Nov-11	Action	Pam Colenso	Request that a quote for a concrete picnic table (for placement at Tora) is provided to the Community Board for funding consideration	Actioned	
199	MCB	30-Apr-12	Action	Mark	Request maintenance be undertaken on the round-about to free the rotating mechanism	Actioned	25.5.12. Have asked contractor to loosen off the bearings. 29.6.12 Trying another bearing as first one didn't work. Bearing has been ordered.
200	MCB	30-Apr-12	Action	Mark	Arrange for the lights in the Martinborough Square to be fixed	Actioned	25.5.12. Cable fault identified and will be repaired by mid June. Lights need to be replaced ext. cost \$8k - budget next F/Y. Lights ordered to be fitted once they arrive
201	MCB	30-Apr-12	Action	Mark	Provide an update to the Martinborough Community Board on the footpath plan for the town	Actioned	25.5.12. Resurface Princess Street footpath. Kitchener to Cologne repair identified dangerously uneven areas. No plan for 2012/13 yet. 11.6.12 The Board requested that they have input into the Martinborough footpath plan so that they can jointly prioritise work with officers. 25/7 prioritised list done and will go to council. To take a consistent approach officers have determined priorities based on criticality.
202	MCB	30-Apr-12	Action	Pam Colenso	Arrange an onsite visit with council officers and the community board to Oxford Street in order to understand the technical issues relating to redesigning of open drains and widening of the road so this may be included in the MCB submission to the draft LTP 2012/2022	Actioned	Meeting request sent to I&S
319	MCB	11-Jun-12	Action	Mark	If required trim the olive trees on Council land in the location of Palliser Vineyards and tidy the surrounding area	Open	16.08.12 work commencing in about a month as Powerco will need to be advised.

Ref #	Meeting	Date	Action Type	Responsible Manager	Action or Task details	Status	Notes
388	MCB	16-Jul-12	Resolution	Paul	Martinborough Town Hall Committee MCB RESOLVED (MCB 2012/40) to grant the Martinborough Town Hall Committee \$1000 to be used to fund a plaque commemorating the centennial and remaining funds are to be applied to the costs of running a celebration lunch. (Moved Guscott Seconded Cr Stevens) Carried	Actioned	Letter sent
389	MCB	16-Jul-12	Resolution	Paul	MCB RESOLVED (MCB 2012/41): 1. To receive the tabled inwards correspondence. 2. To grant the Ngawi Rate Payers Association \$1500 towards the costs of the planned plantings and irrigation in Ngawi. (Moved Cr Stevens Seconded Guscott) Carried	Open	Letter sent
390	MCB	16-Jul-12	Action	Paul	Provide a report for the next MCB meeting outlining how the In-House Prof Services costs are calculated and what they include	Open	

Martinborough Community Board												
Income & Expenditure to 30 June 2012												
	Jul-11	Aug-11	Sep-11	Oct-11	Nov-11	Dec-11	Jan-12	Feb-12	Mar-12	Apr-12	May-12	Jun-12
INCOME												
Balance 1 July 2011	32,210.78	32,210.78	32,210.78	32,210.78	32,210.78	32,210.78	32,210.78	32,210.78	32,210.78	32,210.78	32,210.78	32,210.78
Annual Plan 2011/12	20,930.00	20,930.00	20,930.00	20,930.00	20,930.00	20,930.00	20,930.00	20,930.00	20,930.00	20,930.00	20,930.00	20,930.00
TOTAL INCOME	53,140.78	53,140.78	53,140.78	53,140.78	53,140.78	53,140.78	53,140.78	53,140.78	53,140.78	53,140.78	53,140.78	53,140.78
EXPENDITURE												
Members' Salaries	673.50	1,366.64	2,049.96	3,243.70	4,093.88	4,944.06	5,794.24	5,466.59	6,149.91	6,833.23	7,516.55	8,199.87
Members' Expenses	-											
Total Personnel Costs	673.50	1,366.64	2,049.96	3,243.70	4,093.88	4,944.06	5,794.24	5,466.59	6,149.91	6,833.23	7,516.55	8,199.87
Technology Solutions - Laptop Mba Library		2,064.00	2,064.00	2,064.00	2,064.00	2,064.00	2,064.00	2,064.00	2,064.00	2,064.00	2,064.00	2,064.00
Travel Exps Community Board Conference			613.20	613.20	613.20	613.20	613.20	613.20	613.20	613.20	613.20	613.20
Mitre 10 - Plywood				347.83	347.83	347.83	347.83	347.83	347.83	347.83	347.83	347.83
Mitre 10 - Mural - yellow.white.blue					35.42	35.42	35.42	35.42	35.42	35.42	35.42	35.42
Local Government - Community Board Levv					166.67	166.67	166.67	166.67	166.67	166.67	166.67	166.67
Hart Sport - Kickboards						431.30	431.30	431.30	431.30	431.30	431.30	431.30
Martinborough Business Asso. - Barrel Race								192.50	192.50	192.50	192.50	192.50
Total General Expenses	-	2,064.00	2,677.20	3,025.03	3,227.12	3,658.42	3,658.42	3,850.92	3,850.92	3,850.92	3,850.92	3,850.92
Mba Community Gym			1,000.00	1,000.00	1,000.00	1,000.00	1,000.00	1,000.00	1,000.00	1,000.00	1,000.00	1,000.00
Mba Community Patrol				500.00	500.00	500.00	500.00	500.00	500.00	500.00	500.00	500.00
Fireworks				188.21	188.21	188.21	188.21	188.21	188.21	188.21	188.21	188.21
NZ Council of Victim Support								500.00	500.00	500.00	500.00	500.00
Adrienne Macmaster - Fireworks									188.21	188.21	188.21	188.21
Maths Wairarapa											200.00	200.00
Pirinoa 125th Jubilee												434.78
Total Grants	-	-	1,000.00	1,688.21	1,688.21	1,688.21	1,688.21	2,188.21	2,376.42	2,376.42	2,576.42	3,011.20
TOTAL EXPENDITURE	673.50	3,430.64	5,727.16	7,956.94	9,009.21	10,290.69	11,140.87	11,505.72	12,377.25	13,060.57	13,943.89	15,061.99
ACTUAL NET SURPLUS/(DEFICIT) YEAR TO DATE	52,467.28	49,710.14	47,413.62	45,183.84	44,131.57	42,850.09	41,999.91	41,635.06	40,763.53	40,080.21	39,196.89	38,078.79
LESS: COMMITMENTS												
Salaries to 30 June 2012	9,890.50	9,197.36	8,514.04	7,320.30	6,470.12	5,619.94	4,769.76	5,097.41	4,414.09	3,730.77	3,047.45	2,364.13
Funds for walkway plantings at Ngawi			5,000.00	5,000.00	5,000.00	5,000.00	5,000.00	5,000.00	5,000.00	5,000.00	5,000.00	5,000.00
									1,500.00	1,500.00	1,500.00	1,500.00
Total Commitments	9,890.50	9,197.36	13,514.04	12,320.30	11,470.12	10,619.94	9,769.76	10,097.41	10,914.09	10,230.77	9,547.45	8,864.13
BALANCE TO CARRY FORWARD	42,576.78	40,512.78	33,899.58	32,863.54	32,661.45	32,230.15	32,230.15	31,537.65	29,849.44	29,849.44	29,649.44	29,214.66

MARTINBOROUGH COMMUNITY BOARD

27 AUGUST 2012

AGENDA ITEM 6.1

OFFICER'S REPORT

Purpose of Report

To update Community Boards and the Maori Standing Committee on the Corporate Support Group, Planning and Environment and Infrastructure and Services activities.

Recommendations

Officers recommend that the Board/Committee:

1. *Receive the information.*

CORPORATE SUPPORT GROUP

1. Executive Summary

The Long Term Plan (LTP) was adopted on 27 June, with the final audit process completed that week. Letters have been sent to submitters acknowledging their submission and outlining the decisions made.

The NCS software implementation has commenced and is going to plan. A significant amount of work has gone in to the "data conversion phase. Training continues and everyone is coming to grips with the new, quite different, system.

The archiving project is nearing completion with Phase 2 drawing to a close. Once this is complete the archives policy will be completed to ensure material is stored in the correct manner.

A renegotiated photocopier fleet lease covering 6 machines has been negotiated which will give good savings with slightly better equipment, and an aligned termination date.

Now that most of the hurdles allowing participation in the Local Government Funding Scheme have been passed, the mechanics of actually using this scheme will be investigated. I attended a meeting on 31 July to ascertain the next steps.

Insurance renewals have been retained at similar levels to previous years, however premiums have continued to climb.

The initial stages of the risk review has commenced, this will be tabled at the Policy and Finance Committee.

2. Discussion

2.1 LTP

The LTP was adopted as planned on 27 June. Audit New Zealand completed their review of the LTP during the week 25 to 29 June.

Letters to submitters have been sent acknowledging their submission, and advising of the outcome of their submission.

A report, under separate cover, will be presented scheduling the actions arising from the LTP and progress to date.

2.2 Operating System Replacement

Phase 1 of the migration from ACS to NCS is well underway with the key modules cutting over as planned. Phase two includes other modules – e.g. document management. These will be investigated when the current modules are bedded down, planned for early in the new year.

The Napier Computer Systems (NCS) "Magiq" software suite was selected to replace SWDC's "end of life" ACS software suite.

The confirmation was given to NCS on 16 May, and work commenced immediately with planning.

The table below outlines the tentative go live dates, although the plan is to try and bring these forward.

This schedule is based on ensuring the critical modules are available from day 1, and then phasing the remaining modules as resource becomes available. Some of the phase – ins are based around key dates in that area – e.g. water billing doesn't need to be live until the first reading for 2012/13 is carried out in October, and dogs will go live after the main registration period is over.

The following table outlines the implementation plan and progress to date:

Module	Go live date	Comment
General ledger	2 July 2012	Achieved, GL live 2 July The balances as at 30 June reconciled between ACS and NCS. The years 1996 to 2012 were converted into NCS
Rates	2 July 2012	Achieved, rates live 2 July. The balances as at 30 June 2012 were reconciled between ACS and NCS. Processing now in NCS from 2 July. Installment 1 has been sent to Dataprint. The rates database was reconciled to QV, and extensive checking of total rates required, charges per property, and other rates transactions was carried out. It is not anticipated any more than usual errors will occur.
Property records	30 July 2012	
Customer database	Rates 2 July 2012 Dogs 13 August 2012	Achieved, rates 2 July. Some customer database matters still need to be updated in ACS as they feed thru to other modules
Debtors & Invoicing	30 July 2012	Achieved 2 July, Skeleton debtors (i.e. no history) set up in NCS so receipting can commence. Processing debtor transactions in ACS as normal until transfer. New transactions transferred to NCS so they can be receipted against.
Creditors	30 July 2012	Achieved, went live 5 July. There was a nil balance at 30 June because we paid everything up to date. The first payment run was successfully completed for the 20 July payments.
Banking	2 July 2012	Achieved, commenced 3 July
Assets	30 July 2012	
Cash receipting	2 July 2012	Achieved, commenced 2 July
Meter billing	10 September 2012	Running through ACS until next billing cycle, or earlier.
Dog registration	13 August 2012	Running through ACS until most registrations completed
Resource consents	10 September 2012	Running through ACS until go live, interim system in place
Building consents	10 September 2012	Running through ACS until go live, interim system in place
LIMS and property history	10 September 2012	
Licences	10 September 2012	
Dog infringements	13 August 2012	
Sundry infringements	10 September 2012	
Cemetery	10 September 2012	
Debt management	30 July 2012	

2.2.1. Risks

The key risk area is the rates database, simply because of the volume of data that needs to be transferred. The high level risk of not being able to produce rates invoices or collect the correct amount is almost completely mitigated by the fact that the ACS system still functions.

The risks have been mitigated through a systematic and rigorous testing regime covering all aspects of the rates database.

This testing has included:

- ACS rates statement compared to NCS rates statement on 1 July. This is a summary of the total rates database and is the collation of all the individual transactions in the rates database including all amounts levied to each ratepayer, paid, outstanding balances, penalties.
- NCS land/capital values to QV records – per property
- Levies charged last year in ACS to levies charged this year in NCS – per property
- Rates required from LTP, and as calculated using ACS data, to rates revenue by levy code in NCS
- Opening values for each rate account as at 30 June 2012 in ACS, to the transferred balances in NCS

2.2.2. Summary

The project is progressing as planned, there have been no matters that have caused me any great concern.

2.3 Year End Financials

The end of year financials will be completed using the ACS system to avoid the complicating factor of the Audit team having to review the data conversion prior to commencing the statutory financial audit, which already has tight time frames.

The audit of the transfer of the data can be undertaken at a more convenient time during the interim audit early in the New Year.

2.4 Rate Arrears

Efforts continue on rate arrears. The table below outlines the situation as at 19 June 2012, and excludes multi ownership Maori land.

Date	Amount \$'000	Number	Days since instalment due	SWDC component \$'000 (81%)
30 June 2011	\$851	631	31	\$689
1 August 2011	\$780	463	64	\$632
28 November 2011	\$969	760	7	\$785
1 March 2012	\$925	690	7	\$740
16 March 2012	\$830	602	23	\$672
23 March 2012	\$790	555	30	\$640
1 June 2012	\$855	722	10	\$692
19 June 2012	\$730	632	31	\$591

It is encouraging to note the amount outstanding is at the lowest level for a year. While the number of properties in arrears is still relatively high, we have made some progress on those ratepayers who owed a significant amount.

Of the 632 properties in arrears, approximately 160 are paying a regular amount towards their arrears, and 70 have balances less than \$100

An update will be tabled, once the correct reports in NCS have been identified.

2.5 Draft Financial Statements for the year ended 30 June 2012

The draft financial statements for the year ended 30 June 2012 were tabled at Council.

The draft will be discussed at the Risk and Audit working party on 2 August.

2.6 Archival Project

The archiving project is progressing, with stage one being completed, and stage two well underway.

Stage two of the archive project is to physically process the council's archives so they can be accessed and securely preserved to comply with legal requirements and the council's policy.

Archival material has been moved depending on storage requirements, the final part is cataloging the material.

It is anticipated the project has a couple of months to run.

2.7 Photocopier replacement

A renegotiated photocopier lease has been negotiated which will give good savings with slightly better equipment, and an aligned termination date.

It is common for organizations to end up with differing lease termination dates – driven by the vendors, which creates a barrier when trying to reconfigure the fleet, or “go to the market” with the entire fleet.

One of the key benefits of the new offering is that the lease termination dates of all machines are aligned, with an expiry in two years.

Local Authorities have a number of options regarding the replacement of photocopiers:

Local Authorities have a number of purchasing options:

- GSB Supplycorp
- All Of Government (AOG) pricing through Ministry of Economic Development
- Run a tender on the open market independently

2.8 GSB Supplycorp (GSB)

GSB run a preferred supplier system and Ricoh are the preferred supplier. This option may provide more flexibility than AOG, but the cost will be more than can be achieved through AOG.

2.8.1. AOG Contracts

The Ministry of Economic Development (MED) runs the AOG contracts. Historically this was only available to Central Government organisations; however this has recently been extended to Local Government.

The AOG contracts are on the surface quite attractive; however there are some matters that do require consideration:

- Participants still have to run a tender process with the five “preferred suppliers”
- The photocopier leases are fixed for 5 years and cannot be changed under any circumstances (e.g. amalgamation)
- The equipment cannot be changed during that time i.e. if better technology comes along the existing machines cannot be swapped out
- There is a 1.5% fee payable to MED
- Vendors must submit their lowest price
- Not all photocopiers are subject to the AOG pricing, it is unlikely however that there would not be suitable machines available

2.8.2. Open Market tender run in-house

Vendors will not submit prices at or near the AOG pricing. Vendors tender protocol is that AOG pricing is the lowest and they are unable to submit

better pricing in a general tender situation. This was a very time-consuming process.

2.8.3. Konica

Due to the looming amalgamation process, and the constraints placed on the tender processes outlined above, a direct approach to the incumbent vendors Konica was made.

After some negotiation an acceptable interim arrangement was agreed whereby four of the existing machines would be replaced with new models (with scan capability) and two of the machines would be refurbished.

A key aspect of the new agreement would be the alignment of termination dates. Vendors often introduce staggered termination dates, which then provides a barrier to going to the market.

A 37% overall saving was also achieved.

2.9 Insurance

Insurance coverage has been retained at similar levels to last year, the only change was an increase in material damage coverage from \$25M to \$75M. As the policy is combined with MDC and CDC it was felt that this increase in coverage was justified. The cover is per event and if there was a widespread "event" across the Wairarapa \$25M would probably be insufficient.

Premiums have increased significantly from \$122K to \$164K. This is almost all in the material damage and business interruption areas, the increase in material damage coverage discussed in the previous paragraph accounts for \$10K of this increase, the rest is market movement.

The following is from an email sent by JLT, and outlines the, mostly unavoidable, cost increases:

1. Your **Material Damage** has increased by approx 30%. However the Earthquake cover has also been increased from \$25million (shared Loss Limit) to \$75million.
2. Your **Business Interruption** increased by the same 30%; however Insurers are now adding "multipliers" based on your Earthquake risk. What this has meant is that the total premium went up by 30%, then they added a 200% Multiplier i.e. doubled the premium again. Hence the significant change.
3. The EQC (Earthquake Commission) increased its Levy on Domestic House/Contents to 15c per \$100 of insurance cover (from 5c per \$100) from 1 February 2012 (following the Chch Earthquakes). So your **EQ/WD Levy** has increased by 300%.

Contact Officer: Paul Crimp, Group Manager Corporate Support

PLANNING AND ENVIRONMENT GROUP REPORT

1. Planning

1.1 Resource Consents

Officers received 4 consent applications since 25 June 2012. 7 consents were approved since 25 June (1 received in May, 2 received in early June) all within the statutory timeframes. Officers now provide detailed fortnightly updates on all consents direct to Councillors and Community Board members, so consent details are not listed here.

1.1.1. *GE & CJ Tyer Coastal Subdivision application*

Resource consent application number 3993 has been on hold at the applicant's request, and will now be heard on Tuesday, 14 August.

1.2 Policy

1.2.1. *Coastal Reserves Management Plan*

Work has begun on the Coastal Reserves Management Plan (CRMP). In the past, coastal reserves had been lumped together with the rural reserves. Given that they are on the coast, coastal reserves often have different recreational demands than other rural reserves. It was therefore decided that the coastal reserves should have their own plan. Planning officers have compiled a schedule for development of the Management Plan between now and December 2012. The first part of the schedule involves identifying all of the Council owned coastal reserves, doing title searches to confirm their reserve status under the Reserves Act, and determining which reserves should be covered in the CRMP. Officers will then be able to begin drafting the initial management and development plan documents.

1.3 Social Media

The SWDC Facebook page has been well received with 75 "likes" (people following the page) with hopefully more to come as we get closer to the prize drawing (digital camera) date, 15 August 2012.

The Facebook page has proven to be an excellent tool for connecting with a section of our rate payers. The casual and conversational nature of Facebook encourages people to ask questions that they perhaps wouldn't normally ring Council about. It allows us to be proactive about communication – we can deliver interesting and useful information directly to people, rather than waiting for them to check our website, or to read notices in newspapers. To date we have let people know when dog registrations are due, that the Martinborough Library has moved, to sign up for the NZ ShakeOut earthquake drill, that a road was closed, that it is time to put in applications for Creative Communities grants, and more. The information is well received and we have been able to answer subsequent questions quickly.

2. Building

2.1 Building consents

Processing statistics for: 1 June 2012 – 30 June 2012

Item	Period	Year to date	Same period last year	Annual Plan
Consents received	24	305	28	N/A
Consent processing performance (within 20wd's)	96.88%	99.68%	100%	90%
COA processing performance	66.67%	64.71%	0%	N/A
CCC processing performance	95.65%	99.25%	100%	100%

Consents granted by project 1 June 2012 – 30 June 2012

Code	Type	Avg. Duration (Days)	No. of consents	Value
AB	Internal Alterations with P&D	12.5	2	56,000
AF	Single Story Weatherboard with P&D	7.0	1	222,600
AH	Single Story Stucco/Txt Ct etc with P&D	19	1	96,000
MA	Solid Fuel Heater	7.3	18	87,255
MJ	Swimming/Spa Pools	5.0	1	35,000
NC	Single Story Weatherboard Urban	12.0	2	710,000
NE	Single Story Stucco/Texture Coat etc – Urban	16.0	1	210,000
NF	Single Story Stucco/Texture Coat etc – Rural	12.0	1	75,000
NL	Multi Story Stucco/Texture Coat etc – Rural	12.0	1	420,000
RA	Relocated Residential Dwelling - Urban	11.0	1	19,000
SB	Decks/Conservatories etc	17.0	1	10,000
SC	Minor Farm Buildings	5.0	2	41,000
SF	Proprietary Garages Standard	4.0	1	18,850
SI	Proprietary Garages & sleepout – inc P/D	25.0	1	19,989
SM	Residential Demolition	3.0	1	1,000
		9.0	35	2,021,694

COA Certificate of Acceptance

CCC Code Compliance Certificate

Building consent numbers from 1 July 2011 to 30 June 2012 show as 305. For the same period the year before the number was 350.

2.2 Enforcement

None to report.

2.3 Policy

None to report.

2.4 Other matters

On-line consenting

I recently attended our cluster group meeting where the DBH presented a proposal for on-line consent processing. It is hoped the new system can be introduced in the 2013/1014 financial year. It would introduce a centralised, paperless, internet based hub that receives, captures, and allows consistent processing of all building consent applications. Processing of consents, including inspections, will be conducted by Building Consent Authorities.

The final aim is a service that provides for, and facilitates, the 'end-to-end' processing of consents using standard forms and consenting processes to provide applicants with a common experience, regardless of which Building Consent Authority (BCA) receives their consent application. I couldn't help but think that digitalization of forms, plans, specifications is where we are heading and that SWDC needs to ensure we are keeping up-to-date with this trend.

Forms

I have amended all our forms to align with Masterton DC's forms. This creates consistency for the applicants when filling in the forms. I also created the form as a protect word document so the forms can be completed electronically or printed off and filled in manually.

Scanning

We are currently working on a project to have all our plans scanned and digitalized. This will create consistency with the 2 other Wairarapa councils as they already have systems in place for this.

3. Environmental Health

3.1 Liquor licencing

22 Liquor licenses were issued in June 2012.

Council officers are currently working with both Carterton and Masterton District Councils to update and standardise the liquor licensing forms for the Wairarapa.

3.1.1. Alcohol Reform Bill Update

The Alcohol Law Reform Bill is scheduled to return to the house on Tuesday the 14th of August 2012 subject to extraordinary circumstances.

3.2 Food Bill update

There has been no further update on progress with this Bill.

3.2.1. Food Premise Inspections

EHO's have been concentrating on inspection and annual registration of all food premises. This is a major work commitment for staff during June and July.

A steady interest has been shown in premises opting to change from the Food Hygiene Regulations to the new risk based Food Control Plan in preparation for the Food Bill being passed. This creates a significant extra work resourcing for staff; however longer term, this will be beneficial for Council to ensure that procedures and systems are in place prior to the commencement of the Bill.

To date 13 premises are currently operating fully under a Food Control Plan VIP and a further 4 premises have shown strong interest and are trialling the Off the Peg Food Control Plan.

3.3 Noise Control

7 noise complaints were received during June 2012.

Four for Featherston, one for Greytown and two for Martinborough.

3.4 Dog and stock control

Incidents reported

Attack on Persons

Martinborough 2 Featherston 1 Greytown 0

Two dogs have been classified as menacing, one in Martinborough and the other in Featherston. Menacing classification means that the dogs must be muzzled at all times in a public place. One owner has objected to the menacing classification.

Found Dogs

Martinborough 0 Featherston 1 Greytown 0

Lost Dogs

Martinborough 1 Featherston 3 Greytown 0

Rushing Aggressive

Martinborough 0 Featherston 1 Greytown 0

Wandering

Martinborough 1 Featherston 6 Greytown 0

Welfare Concerns

Martinborough 1 Featherston 1 Greytown 0

Stock

Martinborough 0 Featherston 2 Greytown 4

Total Overall

Martinborough 5 Featherston 15 Greytown 4

Dog Registration:

The annual dog registration process has been a high workload for staff. The work done over the past year to improve dog owners registering dogs and micro chipping has made this years' annual registration process significantly easier for both staff and dog owners. The number of returned letters has dramatically reduced. Records are now significantly improved.

Dog registrations are as at 27 July 2012

Registered 1903 Unregistered 873 Total number of dogs 2792

There are two days to go until penalties apply on 1 August 2012.

Micro chipping has dramatically improved with a total of 30 dogs outstanding in the urban area. This includes dogs that have been registered for less than two months for the first time.

Contact Officer: Glenn Bunny, Group Manager Planning and Environment

INFRASTRUCTURE AND SERVICES GROUP REPORT

1. Consents

1.1 New Consent and Requirements

The Regional Council's focus remains that Council must continue to achieve compliance where non-compliance has existed previously; and that in regard to the new consent applications where required Council must demonstrate a commitment to improved environmental outcomes.

This level of commitment toward these outcomes is consistent with Council's long term draft wastewater is being indicated in our current three waters consent applications renewals.

1.1.1. *Wastewater*

The consent application lodgement for the Greytown WWTP and the latest timeline indicates lodgement by end of October 2012.

The new AEE and consent application lodged for the Martinborough WWTP consent renewal is under development and is expected to be re-lodged by mid-August 2012.

The Featherston WWTP consent renewal application was submitted but Council was required to supply further information as earlier reported. The response to this request was submitted on July 24 2012.

1.1.2. *Water Takes*

The water take consents for Greytown and Martinborough community water supplies were lodged before the end of March 2012. Council has since provided further information for both consents in relation to usage (domestic, non-domestic and irrigation) within the communities and processing of the application continues with the draft request for further information lodged by June 29 2012. Final responses will be submitted once we achieve agreement on current usage and future requirements.

1.2 Other consents

The Martinborough landfill consent has been submitted and further information has been requested. The Regional Council have requested that consent applications be lodged to legitimise the current green-waste shredding and cover operations at the Martinborough Site and the Council needs to proceed to acquire the additional consent.

2. Utilities

2.1 Wastewater

2.1.1. *Operations*

Greytown and Featherston Wastewater treatment plants operated routinely over the period. Normal monitoring for flow and compliance reporting continued throughout the period with no non-compliance issues reported.

At the Martinborough wastewater treatment plant site, Council staff and contractors are working on resealing a concrete transfer chamber which has the potential to cause seepage of effluent. This came to Council's attention through the monitoring programme and GWRC have been kept informed of the situation as Council work to remedy the problem.

Six pipeline blockages were reported and rectified during the period.

2.1.2. Water Supply Capital

No capital works programmed or implemented during the period.

2.2 Water Supply

2.2.1. Operations

Leak detection work has been completed in Martinborough water supply network with no major leaks found but a number of smaller leaks around services pipes and the smaller diameter pipelines. Repair work for these items has been scheduled and is underway.

This completes the in reticulation leak detection work for the three serviced areas which ought to be conducted on at least a three year cycle.

The Ultra filtration plant at Greytown continues to supply both Greytown and Featherston with the supplementary bore in Greytown not in use since 6th April 2012.

The plant itself now is the subject of investigation for efficiency improvement resulting in further capacity gains and the identification of water loss due to possible leakage within and around the raw and treated water ponds and reservoirs.

Community water usage records and trending is attached for Council's information.

2.2.2. Capital

Bore water availability investigation continues at Woodside and Underhill Roads with indications of good potential at Woodside Road close to the Ultra-filtration Plant. This will be the subject of separate reporting in due course

The question of what further work ought to be done in the context of the subsidy funding remaining will be addressed within the reporting, suffice to say that there is good justification to establish a production bore(s) to finalise the ultimate capacity and quality of this source as a supplement/ alternative to the river take.

2.3 Water Races

Water races operated normally during the period.

The review of water races generally is underway with specialist assistance having being sought, with a proposal that staff are currently evaluating.

2.4 Waste Management

2.4.1. Operations

Operations continued without incident throughout the period. Waste export and recycling tonnage data for the period is attached.

3. Roding

3.1 Oldfield Asphalts

Roding maintenance is satisfactory. Eighty per cent of unsealed roads were metalled during May and June. These roads have now been graded and the finished result is very satisfactory.

The wet summer and recent wet weather continues to cause slumping on the Hinakura, Whakapuni, and Ushers Hills. There are no easy fixes and we continue to fill the slumps.

Oldfields have also been busy on the Cape Palliser Road at Te Kopi where heavy swells at the end of June further damaged the gabion walls that support the road. Fortunately we had most of our intended rock stockpile on site for the construction of boulder beaches at Te Kopi and the rock was placed in temporary position to lessen wave damage. When the rest of the rock is delivered the permanent boulder beaches will be constructed.

4. Parks and Reserves

4.1 Transfield Services

Maintenance is satisfactory and Council has received compliments on the condition of Memorial park in Greytown.

Transfield's response to requests for additional service continues to be prompt.

On the down side, the management of burials by Transfield is only satisfactory when their regular sexton is available. When he is away there is no trained person to take his place.

5. Property and Facilities

5.1 Properties

Martinborough Library – Following consideration of the seismic assessment report for the library building and in view of the library's vulnerable user groups, the library was closed on Monday, 16 July. A portacom has been obtained and situated behind the current building in the car park as a temporary solution. The portacom arrived Tuesday, connected and fitted out, and opened to the public on Thursday afternoon. Identification and assessment of a longer term solution for the library continues.

ANZAC Hall, Featherston – A comprehensive building assessment is underway.

Greytown Town Centre – Mould has been identified on the panels on the back library wall in the atrium ceiling area. The architect and main contractor involved with the Town Centre upgrade have been contacted to review the issue.

5.2 Pensioner Housing

Currently vacancies include:

- Cecily Martin Flats, Martinborough – 3 flats as at 31 July (maintenance required)
- Burling Flats, Featherston – 1 small bedsit
- Matthews Flats, Greytown – 1 flat (maintenance required)

Maintenance requirements for the empty flats are currently being assessed and considered against overarching housing maintenance issues and budget.

5.3 Cemeteries

A new ashes wall is currently being built in Featherston Cemetery.

A project to create a cemetery database and enable SWDC cemetery information to be online to the public continues. The first phase, to complete layout plans for each of the three cemeteries, was completed in July. The next phase is to investigate and confirm the software that will be used for the database.

5.4 Swimming Pools

An independent report is currently underway by Opus to not only review the condition of SWDC's three pools, but to include infrastructure, current usage and future goals for each of the pools. This report is due at the end of August.

5.5 Leases and Licenses

Stella Bull Park Building – No responses were received in response to the advertised Expression of Interest. One party has since made contact but has yet to formally submit a proposal. A commercial rent assessment has been undertaken in the interim. The current lease (Wairarapa Wine Centre) is due to expire 31 July 2012.

Other leases currently under review include:

- Kouka Cottage, Greytown (land lease renewal) – Greytown Community Heritage Trust
- Considine Park, Martinborough (lease to occupy) – South Wairarapa Pony Club
- Town Centre, Greytown (lease) – Rightway Limited. The current lease expires 31 July 2012 and at Rightway's request, a month by month rental has been approved until 31 October 2012 to allow them to confirm their ongoing location and space requirements.

6. Libraries

6.1 Martinborough Library

The Martinborough Library was closed to the public from Monday 16th July due to an unsatisfactory structural survey report. A Portakabin was found and fitted out enabling us to open on Thursday 19th July at 1.30.

The Library Kabin is small but perfectly formed. The main collection is still housed within the library building with the Library Kabin holding

approximately 2,400 items of new/recent stock. We are snugged between Mitre 10 and P&K in the car park.



We are offering almost all the services we did prior to the move including fax and photocopier. However, two changes are notable - the internet facilities inside are not available but the Wifi connection still functions from the front of the building.

Also, Tuesday's Book Babies session is now being held in the Martinborough School Library at 10 (thanks very much Martinborough School). The Wairarapa Community Law Centre will still be visiting to offer free legal advice once a month. The Kabin is open 10-5 weekdays and 10-12 Saturdays.

6.2 Statistics all Libraries

Refer appendix 1 for statistics:

- Issues
- Transactions
- Door Count

7. Appendices

Appendix 1 – Statistics all Libraries

Appendix 2 – Monthly Water usage

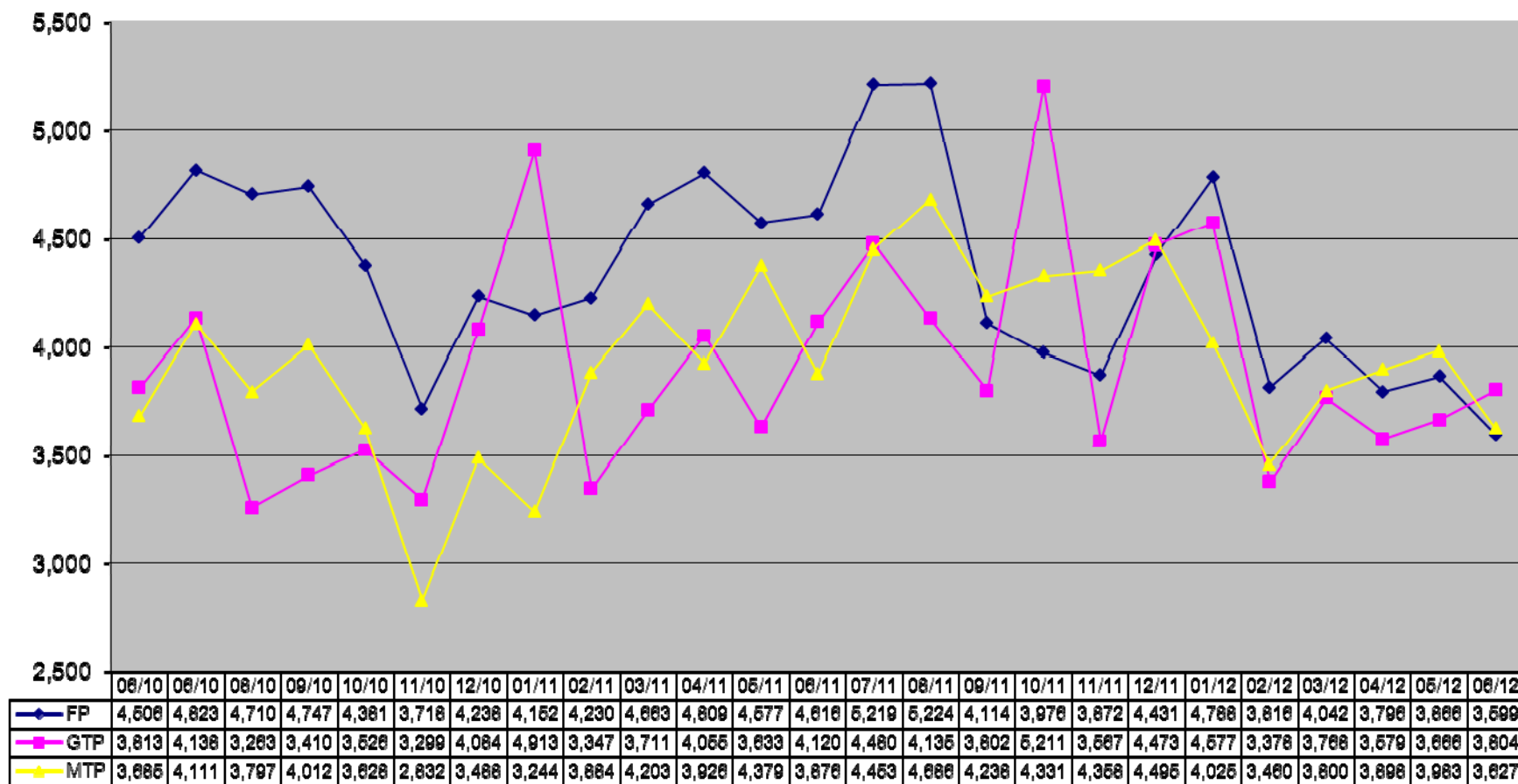
Appendix 3 – Waste exported to Bonny Glen including Recycling

Contact Officer: Mark Allingham, Group Manager Infrastructure and Services

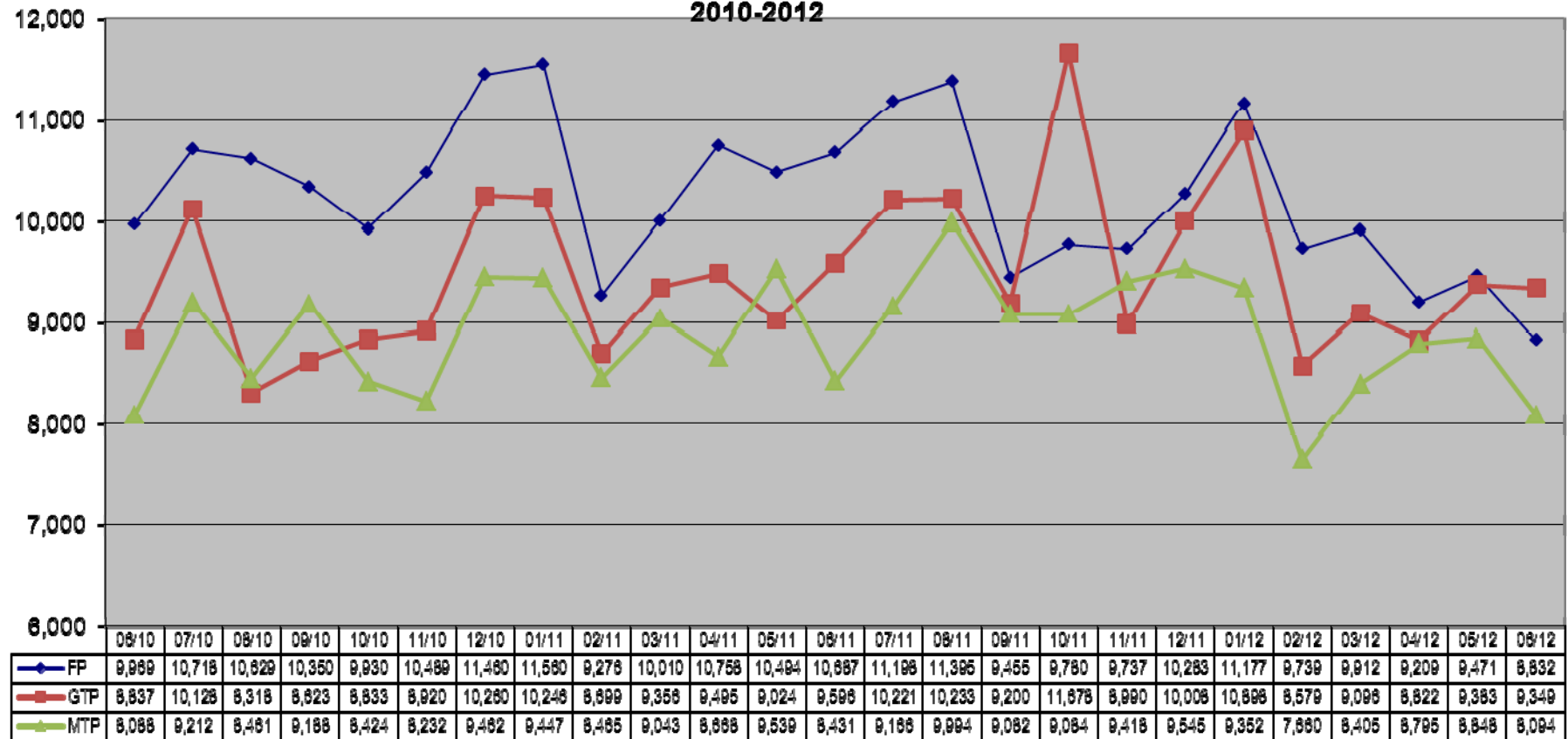
Reviewed by: Dr Jack Dowds, Chief Executive Officer

Appendix 2 – Statistics all Libraries

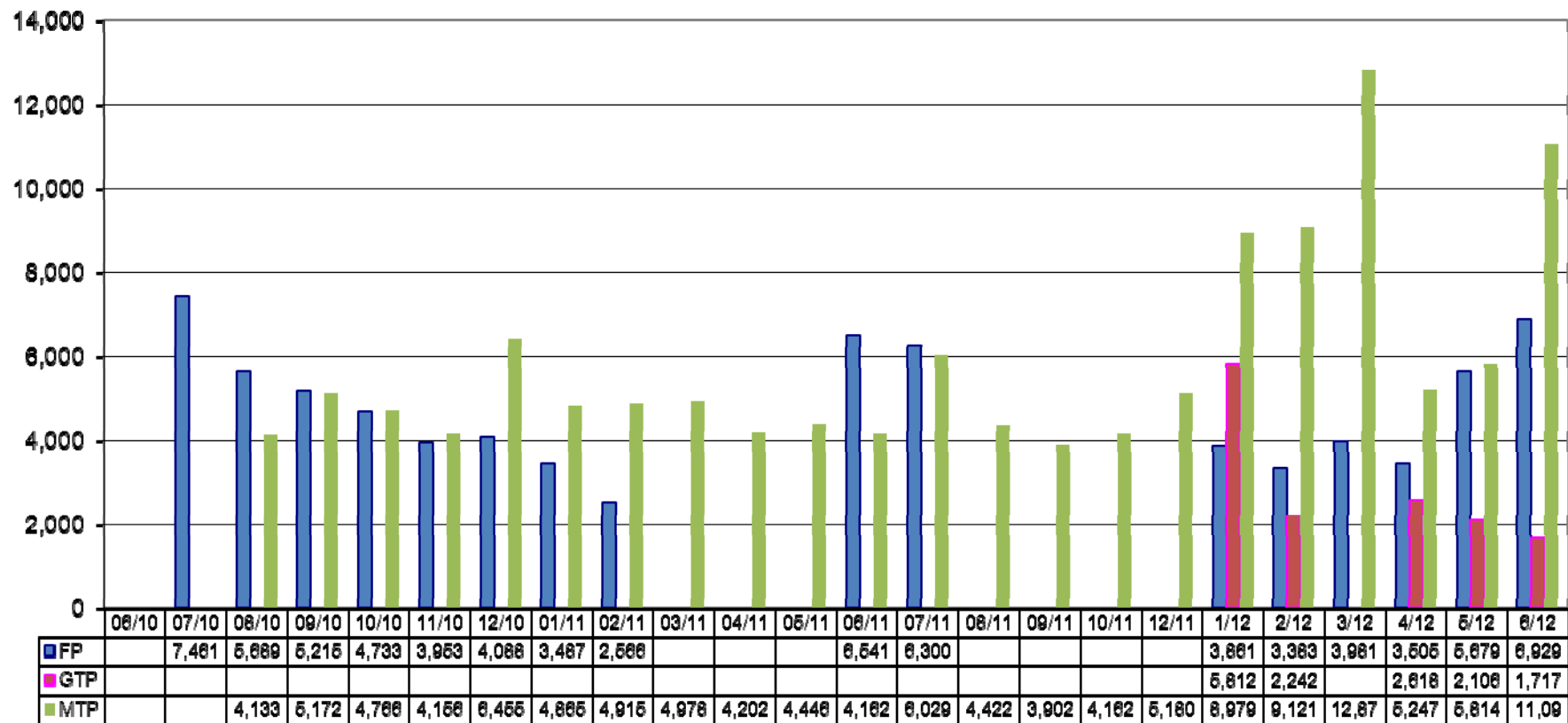
Issues: Featherston, Greytown and Martinborough Libraries: 2010-2012



**Transactions (excluding Council functions) for Featherston, Greytown and Martinborough
Libraries
2010-2012**

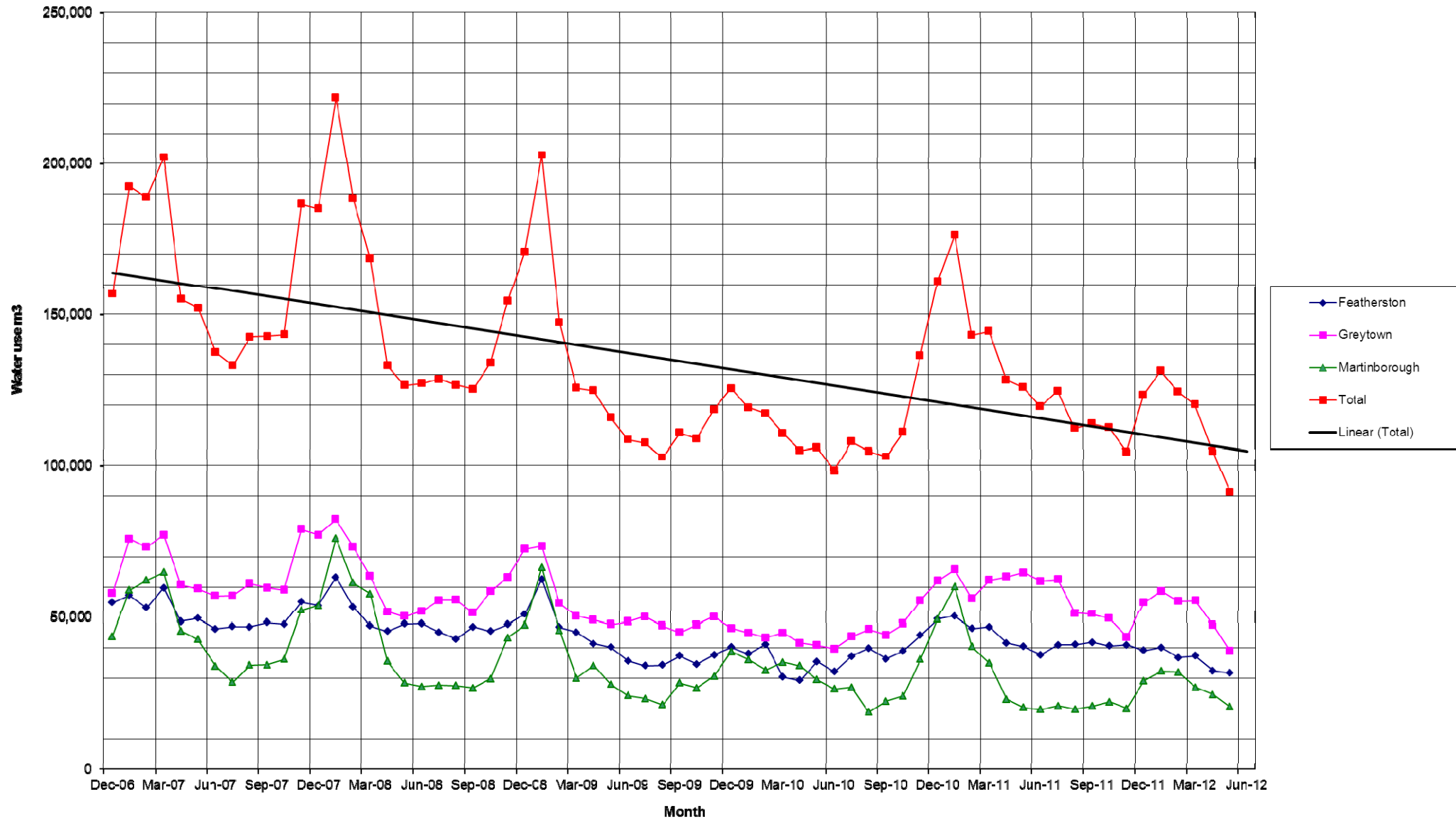


Door count, Featherston, Greytown, Martinborough libraries
(no count = battery failure or human error)



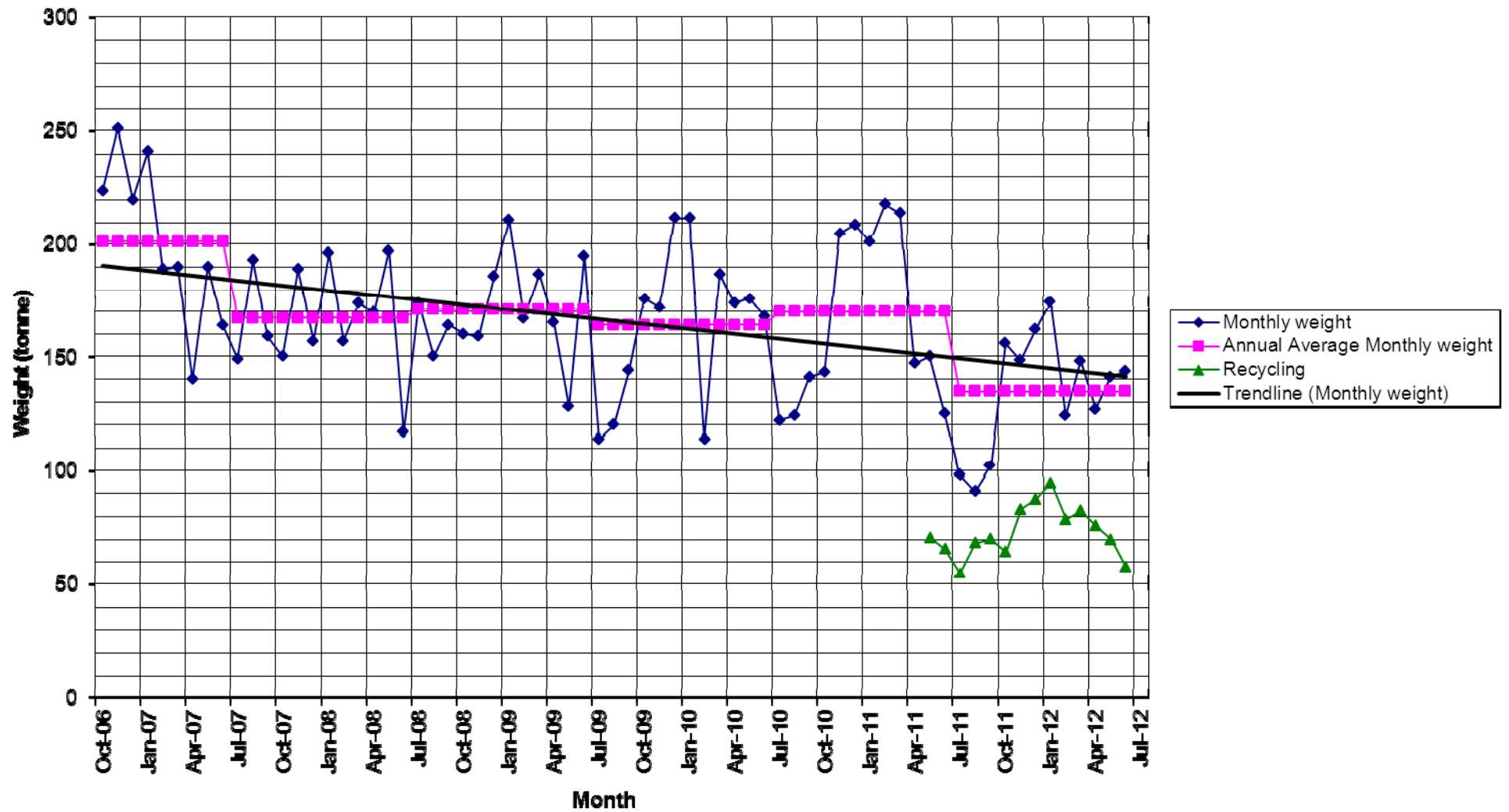
Appendix 3 – Water Usage

Water use South Wairarapa District Council



Appendix 4 – Waste Exported to Bonny Glenn including Recycling

Monthly weight of waste transferred from Martinborough transfer station to Bonny Glen



MARTINBOROUGH COMMUNITY BOARD

27 AUGUST 2012

AGENDA ITEM 6.2

FOOTPATH REPORT

Purpose of Report

To seek approval for the footpath forward works programme.

Recommendations

Officers recommend that the Community Board:

1. *Receive the information.*

1. Background

Bri-Ken & Associates completed a RAMM footpath inspection and report in 2011. We are using this as a basis for our forward three year programme. We are also aware that the monies need to be spread over the three towns, where required.

Council undertakes three activities to achieve the requirements of a safe footpath network, Footpath Maintenance, New Footpaths and Footpath Renewals.

2. Footpath Maintenance

Our Budget is \$34,000 per annum. This will be used where there are small isolated faults that create a hazard for pedestrians. As in lips in concrete panels, pot holes, tobies, tree roots etc.

New complaints usually come in from the public, Bri-Ken has identified these hazards and prioritised the severity from 1 -5. We are working on these doing the most severe where practicable.

3. New Footpaths

Budget of \$80,000 per annum. New footpaths are constructed where there are no footpaths. Council's policy is to provide a footpath at least on one side of the road.

The location of the new footpaths is determined by assessing the need to get around the communities and get to key destinations. This is to be decided by involving the community.

All Streets in the three towns with no footpaths have been identified.

Generally new footpaths with out new kerb and channel and associated drainage are constructed with concrete (Width 1.4mts). At today's rates \$80,000 will equate to roughly 800 metres.

4. Footpath Renewals

Budget of \$40,000 per annum. This generally involves asphalt footpaths where the existing old A/C is overlaid with new. Costs for this are about \$20 per M2.

Large lengths of footpath are the best for this renewal work and generally there is also associated concrete work with K/C and drive ways. Again the worst of Street has been identified by Bri-Kens report.

5. Appendices

Appendix 1 – Footpath Plan

Appendix 2 – Bri-Ken & Associates 2011 RAMM Footpath inspection report

Contact Officer: Steve MacArthur, Roading Engineer

Reviewed by: Mark Allingham, Group Manager Infrastructure and Services

Appendix 1 – Footpaths 3 Year Programme

FOOTPATHS THREE YEAR PROGRAMMI

FOOTPATH MAINTENANCE HAZARD FAULTS

Year 1			Year 2			Year 3		
STREET	NO.	FAULT	STREET	NO.	FAULT	STREET	NO.	FAULT
Churchill Cres.	13	Trench	Revans St.	85,93,95,59	Tripping Hazard	Broadway St		
Fox St.	25,7,11,13	Service Cover	Wakefield St.	47	Service Cover	Churchill Cres.	26,28,37,29	Service Cover
Fox St.	33,21	Tripping Hazard	Watt St.	63	Service Cover	Kempton St.	59	Service Cover
Kowhai Gr.	21	Tripping Hazard	Main St.	15	Vegetation	Birdwood St.	3	Vegetation
Cologne St	80	Vegetation	Main St.	10,12,94,96,98,106,109	Service Cover	Clara Ann Gr.	1	Vegetation
Dublin St.	23	Tripping Hazard	Main St.	44,260	Trench	Dublin St	37	Vegetation
Ferry Rd	23,37	Tripping Hazard	Wood St.	4,58	Service Cover	McMasters St	1	Service Cover
New York St.	32,38,40,78	Vegetation	Wood St.	157	Tripping Hazard	Naples St.	56	Service Cover
New York St	70	Tripping Hazard	Oxford St	105	Service Cover	Panama	20	Service Cover
New York St.	56	Service Cover	Panama St	8	Trench			
East St	167	Vegetation	Regent St	107	Trench			
East St	3,135	Trench	Kitchener St.	12	Tripping Hazard			
Hastwell St.	1	Tripping Hazard	Strasbourg St	23,9,5	Vegetation			
Jellicoe St GTWN 4		Tripping Hazard						
Kuratawhiti St.	74	Vegetation						
Kuratawhiti St.	12	Service Cover						

FOOTPATH RENEWALS

Year 1				Year 2			Year 3		
STREET	FROM	TO	PRAM XING	STREET	FROM	TO	STREET	FROM	TO
Wallace St	Revans	Fox St		Main St	South End	Humphries St	Cologne St	Broadway St	Cambridge St
Revans St	Donald St	Waite St		Stasbourg St	Princess St	Cambridge St	Daniel St	Jellicoe St	Regent St
Bell St		Johnson St	2				Weld St	Jellicoe St	French
Birdwood St		Bell St	1						
Birdwood St		Hanson St	2						
Broadway St		Cologne St	1						
Broadway St		Strasbourg St	1						
Cologne St		Broadway St	1						
Cologne St		Regent St	1						
Harrison St W		Wakefield St	1						
Hickson St		Bell St	1						
Naples St		Regent St	1						
Regent St		Strasbourg St	1						
Regent St		Cologne St	1						
Fitzherbert st		Wallace St	1						
Fitzherbert st		Lyons St	1						
Fitzherbert st		Daniel St	1						
Wakefield St		Fox St	1						

FOOTPATH NEW

YEAR ONE				YEAR TWO				YEAR THREE			
STREET	FROM	TO	LENGTH	STREET	FROM	TO	LENGTH	STREET	FROM	TO	LENGTH
Bell St	Hickson St	Wakefield St	180	Titoki Gr	Wakefield St		150	North St	West St	Main St	90
Donald St	Revans		300	Watts St	Fitzherbert St	Revans St	65	North St	Main St	East St	90
Johnston St	Harrison St W.		180	Mahupuku St	Reading St.		280	Reading St	McMaster St	Market Rd	380
Wakefield St	Harrison St W.		270	West St.	Humphries St	Wood St	450	Reading St	North St	Jellicoe St	570

Appendix 2 – 2011 RAMM Footpath Inspection Report

South Wairarapa District Council

RAMM Footpath Inspection and Report 2011 Order No. 29062

FINAL ANALYSIS



Bri-Ken & Associates Ltd

PO Box 1474, Palmerston North 4440

Phone: (06) 358-5482 Fax: (06) 354-1390 E-mail: bri-ken@xtra.co.nz



SOUTH WAIRARAPA DISTRICT COUNCIL TOTAL SUMMARY OF FOOTPATH FAULTS		
Type of Fault	Number of Faults (no.)	Total Length of Repair (metres)
Footpath	229	3516
Pram Crossings	20	29
Service Covers	31	44
Toby's	76	85
Trees + Roots	34	543
Vegetation	31	408
TOTALS:	421	4625

**SWDC FOOTPATH INVENTORY 2011
ROAD SUMMARY**

SWDC FOOTPATH INVENTORY 2011 (ROAD ORDER SUMMARY)

Road ID	Road Name	Start (m)	Start Description	End (m)	End Description	Type of Fault	Location of Fault	Material	Side	Severity (1-5)	Length Repair (m)
283	AWHINA DRIVE	4	HUMPHRIES STREET	84	CDS	Toby	Low loby outside #8	Concrete	Right	3	1
34	BELL ST	230	BIRDWOOD ST	309	JOHNSON ST	Footpath	Hse No. 15A	Concrete	Left	4	5
34	BELL ST	230	BIRDWOOD ST	309	JOHNSON ST	Footpath	Hse No. 17	Concrete	Left	4	1
34	BELL ST	230	BIRDWOOD ST	309	JOHNSON ST	Footpath	Cnr Wakefield + Bell St	Concrete	Left	4	5
34	BELL ST	230	BIRDWOOD ST	309	JOHNSON ST	Footpath	Cnr Johnson + Bell St	Concrete	Left	4	1
34	BELL ST	230	BIRDWOOD ST	309	JOHNSON ST	Footpath	Cnr Hse Johnson + Bell St	Concrete	Left	5	1
34	BELL ST	230	BIRDWOOD ST	309	JOHNSON ST	Pram Crossing	Cnr Hse Johnson + Bell St	Concrete	Left	5	1
34	BELL ST	230	BIRDWOOD ST	309	JOHNSON ST	Pram Crossing	New Hse (long grass)	Concrete	Left	4	2
34	BELL ST	230	BIRDWOOD ST	309	JOHNSON ST	Vegetation	Cnr Hse No. 11	Concrete	Left	3	12
34	BELL ST	230	BIRDWOOD ST	309	JOHNSON ST	Vegetation	Cnr Wakefield + Bell St	Concrete	Left	3	3
35	BETHUNE ST	6	SH2	428	WOODWARD ST	Footpath	Hse No. 13	Concrete	Left	4	8
35	BETHUNE ST	6	SH2	428	WOODWARD ST	Footpath	Hse No. 15	Concrete	Left	4	8
36	BIRDWOOD ST	54	FOX ST	262	BELL ST	Trees	Hse No. 3	Concrete	Left	3	16
36	BIRDWOOD ST	7	SH2	600	END	Footpath	Hse No. 3A	A/C	Left	3	12
36	BIRDWOOD ST	7	SH2	600	END	Footpath	Outside Batavian	Concrete	Right	5	30
36	BIRDWOOD ST	7	SH2	600	END	Footpath	Hse No. 18	Concrete	Right	5	6
36	BIRDWOOD ST	7	SH2	600	END	Footpath	Cnr Haywood + Birdwood	Concrete	Right	5	8
36	BIRDWOOD ST	7	SH2	600	END	Footpath	Hse No. 6	Concrete	Right	5	8
36	BIRDWOOD ST	7	SH2	600	END	Footpath	Hse No. 4	Concrete	Right	5	2
36	BIRDWOOD ST	7	SH2	600	END	Footpath	SH2 + Fox St	Concrete	Right	5	37
36	BIRDWOOD ST	7	SH2	600	END	Pram Crossing	Cnr Birdwood + Hanson St	Concrete	Right	5	1
36	BIRDWOOD ST	7	SH2	600	END	Pram Crossing	Cnr Birdwood + Hanson St	Concrete	Right	5	1
36	BIRDWOOD ST	7	SH2	600	END	Pram Crossing	Cnr Bell + Birdwood	Concrete	Right	4	1
36	BIRDWOOD ST	7	SH2	600	END	Toby	Cnr Bell + Birdwood	Concrete	Right	4	1
36	BIRDWOOD ST	7	SH2	600	END	Trees	Cnr Haywood + Birdwood	Concrete	Right	5	44
37	BRANDON ST	12	WAITE ST	659	DANIEL ST	Footpath	Cnr Brandon + Lyon St	A/C	Left	5	2
37	BRANDON ST	12	WAITE ST	659	DANIEL ST	Footpath	Hse No. 66	A/C	Left	5	2
75	BROADWAY ST	391	KITCHENER ST	453	NAPLES ST	Service Cover	Outside Council Office	A/C	Left	3	1
75	BROADWAY ST	391	KITCHENER ST	453	NAPLES ST	Toby	Outside Council Office	A/C	Left	3	1
75	BROADWAY ST	8	NEW YORK ST	760	DUBLIN ST	Footpath	Vacant Section	A/C	Right	5	3
75	BROADWAY ST	8	NEW YORK ST	760	DUBLIN ST	Footpath	Vehicle Crossing	Concrete	Right	3	4
75	BROADWAY ST	8	NEW YORK ST	760	DUBLIN ST	Footpath	Hse No. 33	A/C	Right	4	1
75	BROADWAY ST	8	NEW YORK ST	760	DUBLIN ST	Footpath	Cnr Broadway + New York St	A/C	Right	4	2
75	BROADWAY ST	8	NEW YORK ST	760	DUBLIN ST	Pram Crossing	Cnr Broadway + Strabourge	A/C	Right	3	2
75	BROADWAY ST	8	NEW YORK ST	760	DUBLIN ST	Pram Crossing	Cnr Broadway + Cologne	A/C	Right	3	1
75	BROADWAY ST	8	NEW YORK ST	760	DUBLIN ST	Trees	Between 239-376m	A/C	Right	3	28
75	BROADWAY ST	8	NEW YORK ST	760	DUBLIN ST	Vegetation	Hse No. 15	A/C	Right	3	3
75	BROADWAY ST	8	NEW YORK ST	760	DUBLIN ST	Vegetation	Cnr Kitchener + Broadway	A/C	Right	3	28
76	CAMBRIDGE RD	11	THE SQUARE	333	NEW YORK ST	Footpath	Cnr Cologne + Cambridge St	A/C	Left	3	2
76	CAMBRIDGE RD	11	THE SQUARE	333	NEW YORK ST	Toby	Cnr Square + Cambridge St	A/C	Left	4	1

SWDC FOOTPATH INVENTORY 2011 (ROAD ORDER SUMMARY)

Road ID	Road Name	Start (m)	Start Description	End (m)	End Description	Type of Fault	Location of Fault	Material	Side	Severity (1-5)	Length Repair (m)
39	CHURCHILL CRES	3	WATT ST	395	END	Footpath	Hse No. 3	Concrete	Left	4	7
39	CHURCHILL CRES	3	WATT ST	395	END	Footpath	Hse No. 8	Concrete	Left	4	8
39	CHURCHILL CRES	3	WATT ST	395	END	Footpath	Hse No. 7	Concrete	Left	4	7
39	CHURCHILL CRES	3	WATT ST	395	END	Footpath	Hse No. 11	Concrete	Left	4	6
39	CHURCHILL CRES	3	WATT ST	395	END	Footpath	Hse No. 15	Concrete	Left	4	5
39	CHURCHILL CRES	3	WATT ST	395	END	Footpath	Hse No. 17	Concrete	Left	4	6
39	CHURCHILL CRES	3	WATT ST	395	END	Footpath	Hse No. 19	Concrete	Left	4	9
39	CHURCHILL CRES	3	WATT ST	395	END	Footpath	Hse No. 10	Concrete	Left	4	6
39	CHURCHILL CRES	3	WATT ST	395	END	Footpath	Hse No. 4	Concrete	Left	5	25
39	CHURCHILL CRES	3	WATT ST	395	END	Footpath	Hse No. 2	Concrete	Left	4	28
39	CHURCHILL CRES	3	WATT ST	395	END	Service Cover	Hse No. 29	Concrete	Left	4	4
39	CHURCHILL CRES	3	WATT ST	395	END	Service Cover	Hse No. 37	Concrete	Left	3	2
39	CHURCHILL CRES	3	WATT ST	395	END	Service Cover	Hse No. 28	Concrete	Left	3	1
39	CHURCHILL CRES	3	WATT ST	395	END	Service Cover	Hse No. 26	Concrete	Left	3	1
39	CHURCHILL CRES	3	WATT ST	395	END	Toby	Hse No. 20	Concrete	Left	5	1
8	CLARA ANNE GR	6	READING ST	60	CDS	Trees + Roots	Cnr house RHS	Trees	Right	4	32
77	COLOGNE ST	6	REGENCY ST	993	PRINCESS ST	Footpath	Hse No. 34	Seal	Left	5	12
77	COLOGNE ST	6	REGENCY ST	993	PRINCESS ST	Footpath	Hse No. 34	Seal	Left	5	3
77	COLOGNE ST	6	REGENCY ST	993	PRINCESS ST	Footpath	Hse No. 30	Seal	Left	5	7
77	COLOGNE ST	6	REGENCY ST	993	PRINCESS ST	Footpath	Veh Cross cnr Cologne+Broadway	Concrete	Left	5	8
77	COLOGNE ST	6	REGENCY ST	993	PRINCESS ST	Pram Crossing	Cnr Broadway + Cologne St	Seal	Left	3	1
77	COLOGNE ST	6	REGENCY ST	993	PRINCESS ST	Toby	Hse No. 64	A/C	Left	3	1
77	COLOGNE ST	6	REGENCY ST	993	PRINCESS ST	Vegetation	Hse No. 53	A/C	Left	3	10
77	COLOGNE ST	6	REGENCY ST	993	PRINCESS ST	Vegetation	Cnr Cologne + Cambridge St	Seal	Left	3	8
77	COLOGNE ST	6	REGENCY ST	993	PRINCESS ST	Vegetation	Hse No. 36	Seal	Left	3	3
77	COLOGNE ST	6	REGENCY ST	12	SACKVILLE ST	Pram Crossing	Cnr Regent + Cologne St	A/C	Right	3	1
78	CORK ST	5	NAPLES ST	294	STRASBOURG ST	Footpath	Hse No. 28	A/C	Right	4	2
78	CORK ST	5	NAPLES ST	294	STRASBOURG ST	Toby	Hse No. 12	A/C	Right	3	1
78	CORK ST	5	NAPLES ST	294	STRASBOURG ST	Toby	Hse No. 8	A/C	Right	3	1
78	CORK ST	5	NAPLES ST	294	STRASBOURG ST	Toby	Hse No. 10	A/C	Right	3	1
78	CORK ST	5	NAPLES ST	294	STRASBOURG ST	Vegetation	Cnr Naples + Cork St	A/C	Right	3	20
84	DANIEL ST (MARTINBORO)	6	REGENCY ST	461	JELICOE ST	Footpath	Hse No. 19	Seal	Right	3	3
84	DANIEL ST (MARTINBORO)	6	REGENCY ST	461	JELICOE ST	Footpath	Scab total length	Seal	Right	3	400
43	DONALD ST	8	WAITE ST	375	SH53	Footpath	Trees + grass total length	Concrete	Right	3	125
85	DUBLIN ST	186	ROBERTS ST	775	SACKVILLE ST	Footpath	Hse No. 59	A/C	Left	4	3
85	DUBLIN ST	186	ROBERTS ST	775	SACKVILLE ST	Trees	Hse No. 37	A/C	Left	5	4
85	DUBLIN ST	0	PRINCESS ST	520	JELICOE ST	Footpath	Hse No. 42	Concrete	Right	5	6
85	DUBLIN ST	0	PRINCESS ST	520	JELICOE ST	Footpath	Vacant Section	Concrete	Right	5	2
85	DUBLIN ST	0	PRINCESS ST	520	JELICOE ST	Toby	Cnr Dublin + Roberts St	Concrete	Right	5	2
9	EAST ST	11	WAKELIN ST	2126	NORTH ST	Footpath	Near No. 93	Concrete	Left	4	1

SWDC FOOTPATH INVENTORY 2011 (ROAD ORDER SUMMARY)

Road ID	Road Name	Start (m)	Start Description	End (m)	End Description	Type of Fault	Location of Fault	Material	Side	Severity (1-5)	Length Repair (m)
9	EAST ST	11	WAKELIN ST	2126	NORTH ST	Footpath	Hse No. 80	Concrete	Left	5	5
9	EAST ST	11	WAKELIN ST	2126	NORTH ST	Footpath	Hse No. 64	Concrete	Left	4	12
9	EAST ST	11	WAKELIN ST	2126	NORTH ST	Footpath	Hse No. 66	Concrete	Left	5	23
9	EAST ST	11	WAKELIN ST	2126	NORTH ST	Footpath	Hse No. 66 + No. 6	Concrete	Left	5	12
9	EAST ST	11	WAKELIN ST	2126	NORTH ST	Footpath	Hse No. 44	Concrete	Left	2	1
9	EAST ST	11	WAKELIN ST	2126	NORTH ST	Footpath	Hse No. 32	Concrete	Left	2	1
9	EAST ST	11	HOSPITAL RD	2314	LOASBY PL	Footpath	Hse No. 1	Concrete	Right	3	1
9	EAST ST	11	HOSPITAL RD	2314	LOASBY PL	Footpath	Hse No. 5	Concrete	Right	3	1
9	EAST ST	11	HOSPITAL RD	2314	LOASBY PL	Footpath	Outside bowling green	Concrete	Right	2	47
9	EAST ST	11	HOSPITAL RD	2314	LOASBY PL	Footpath	Cnr Church + East St	Concrete	Right	4	1
9	EAST ST	11	HOSPITAL RD	2314	LOASBY PL	Footpath	Hse No. 111	Concrete	Right	5	2
9	EAST ST	11	HOSPITAL RD	2314	LOASBY PL	Footpath	Hse No. 145	Concrete	Right	4	12
9	EAST ST	11	HOSPITAL RD	2314	LOASBY PL	Footpath	Hse No. 167	Concrete	Right	3	1
9	EAST ST	11	HOSPITAL RD	2314	LOASBY PL	Service Cover	Hse No. 165	N/A	Right	3	1
9	EAST ST	11	HOSPITAL RD	2314	LOASBY PL	Toby	Hse No. 7	PVC	Right	2	1
9	EAST ST	11	HOSPITAL RD	2314	LOASBY PL	Toby	Hse No. 109	PVC	Right	5	1
9	EAST ST	11	HOSPITAL RD	2314	LOASBY PL	Toby	Hse No. 105	PVC	Right	5	1
9	EAST ST	11	HOSPITAL RD	2314	LOASBY PL	Toby	Hse No. 113	PVC	Right	5	1
9	EAST ST	11	HOSPITAL RD	2314	LOASBY PL	Vegetation	Hse No. 161	Trees	Right	3	9
9	EAST ST	11	HOSPITAL RD	2314	LOASBY PL	Vegetation	Cnr Hospital + Loasby Pl	N/A	Right	3	2
44	FARRIER GR	13	BRANDON ST	133	CDS	Footpath	Hse No. 8	Concrete	Left	5	8
44	FARRIER GR	13	BRANDON ST	133	CDS	Footpath	Hse No. 3	Concrete	Left	5	6
44	FARRIER GR	13	BRANDON ST	133	CDS	Footpath	Hse No. 4	Concrete	Left	5	8
44	FARRIER GR	13	BRANDON ST	133	CDS	Footpath	Hse No. 5	Concrete	Left	5	10
44	FARRIER GR	13	BRANDON ST	133	CDS	Footpath	Hse No. 6	Concrete	Left	5	6
44	FARRIER GR	13	BRANDON ST	133	CDS	Footpath	Hse No. 8	Concrete	Left	5	5
87	FERRY RD	7	JELICOE ST	320	SEAL JOIN	Vegetation	Cnr hse Ferry + French St	Concrete	Right	4	15
87	FERRY RD	7	JELICOE ST	320	SEAL JOIN	Vegetation	Cnr hse Ferry + French St	Concrete	Right	4	39
45	FOX ST	8	DONALD ST	1163	WALLACE ST	Footpath	Hse No. 16	A/C	Left	4	2
45	FOX ST	8	DONALD ST	1163	WALLACE ST	Footpath	Hse No. 2	A/C	Left	3	2
45	FOX ST	8	DONALD ST	1163	WALLACE ST	Footpath	Vacant Section	A/C	Left	5	3
45	FOX ST	8	DONALD ST	1163	WALLACE ST	Pram Crossing	Outside Family Centre	A/C	Left	3	1
45	FOX ST	8	DONALD ST	1163	WALLACE ST	Toby	Outside Family Centre	A/C	Left	3	1
45	FOX ST	8	DONALD ST	1163	WALLACE ST	Toby	Hse No. 30	A/C	Left	4	1
45	FOX ST	8	DONALD ST	1163	WALLACE ST	Toby	Hse No. 22	A/C	Left	4	1
45	FOX ST	8	DONALD ST	1163	WALLACE ST	Toby	Hse No. 100	Seal	Left	4	1
45	FOX ST	8	DONALD ST	1163	WALLACE ST	Toby	Hse No. 98	Seal	Left	4	1
45	FOX ST	8	DONALD ST	1163	WALLACE ST	Toby	Hse No. 96	A/C	Left	4	1
45	FOX ST	8	DONALD ST	1163	WALLACE ST	Toby	Vacant Section	A/C	Left	4	1
45	FOX ST	8	DONALD ST	1163	WALLACE ST	Toby	Hse No. 84	A/C	Left	5	1

SWDC FOOTPATH INVENTORY 2011 (ROAD ORDER SUMMARY)

Road ID	Road Name	Start (m)	Start Description	End (m)	End Description	Type of Fault	Location of Fault	Material	Side	Severity (1-5)	Length Repair (m)
45	FOX ST	83	WAITE ST	1183	WATT ST	Footpath	Hse No. 43	Concrete	Right	4	4
45	FOX ST	83	WAITE ST	1183	WATT ST	Toby	Cnr Fox + Wakefield St	A/C	Right	4	1
45	FOX ST	83	WAITE ST	1183	WATT ST	Toby	Outside RSA	A/C	Right	4	3
45	FOX ST	83	WAITE ST	1183	WATT ST	Tree Roots	Hse No. 3	Trees	Right	4	3
90	GREY ST	460	ROBERTS ST	646	END	Footpath	Total length poor condition	Seal	Left	3	180
46	HARDIE GR	6	WAITE ST	175	CDS	Footpath	Hse No. 20	Concrete	Left	5	5
46	HARDIE GR	6	WAITE ST	175	CDS	Toby	Hse No. 18	Concrete	Left	4	1
46	HARDIE GR	6	WAITE ST	175	CDS	Footpath	Hse No. 6	Concrete	Right	5	5
46	HARDIE GR	6	WAITE ST	175	CDS	Footpath	Hse No. 4	Concrete	Right	5	3
46	HARDIE GR	6	WAITE ST	175	CDS	Footpath	Hse No. 21	Concrete	Right	5	3
47	HARRISON ST EAST	621	HICKSON ST	786	BIRDWOOD ST	Vegetation	Hse No. 70	Concrete	Right	4	4
47	HARRISON ST EAST	621	HICKSON ST	786	BIRDWOOD ST	Vegetation	Hse No. 88	Concrete	Left	3	15
48	HARRISON ST WEST	6	JOHNSON ST	215	WAKEFIELD ST	Footpath	46m over length settlement	Concrete	Left	3	15
48	HARRISON ST WEST	6	JOHNSON ST	215	WAKEFIELD ST	Pram Crossing	Cnr Harrison + Wakefield	Concrete	Left	3	46
48	HARRISON ST WEST	6	JOHNSON ST	215	WAKEFIELD ST	Toby	Outside Hotel	Concrete	Left	4	1
10	HASTWELL ST	7	SH2	109	WEST ST	Trees	Outside Hall	A/C	Left	3	1
50	HAYWOOD ST	5	HICKSON ST	212	BIRDWOOD ST	Footpath	Outside Hall	A/C	Right	3	12
50	HAYWOOD ST	5	HICKSON ST	212	BIRDWOOD ST	Footpath	Hse No. 12	Seal	Left	5	10
50	HAYWOOD ST	5	HICKSON ST	212	BIRDWOOD ST	Footpath	Hse No. 8	Seal	Left	4	4
50	HAYWOOD ST	5	HICKSON ST	212	BIRDWOOD ST	Footpath	Hse No. 5	Seal	Left	4	4
50	HAYWOOD ST	5	HICKSON ST	212	BIRDWOOD ST	Footpath	Hse No. 17	Seal	Left	5	15
50	HAYWOOD ST	5	HICKSON ST	212	BIRDWOOD ST	Toby	Hse No. 14	Seal	Left	5	2
50	HAYWOOD ST	5	HICKSON ST	212	BIRDWOOD ST	Toby	Hse No. 8	Seal	Left	4	1
50	HAYWOOD ST	5	HICKSON ST	212	BIRDWOOD ST	Toby	Hse No. 5	Seal	Left	4	1
50	HAYWOOD ST	5	HICKSON ST	212	BIRDWOOD ST	Toby	Hse No. 4	Seal	Left	4	1
50	HAYWOOD ST	5	HICKSON ST	212	BIRDWOOD ST	Toby	Hse No. 1	Seal	Left	4	1
50	HAYWOOD ST	5	HICKSON ST	212	BIRDWOOD ST	Toby	Hse No. 7	Seal	Left	3	1
51	HICKSON ST	7	SH2	283	HAYWOOD ST	Footpath	Hse No. 5	Seal	Left	3	1
51	HICKSON ST	7	SH2	283	HAYWOOD ST	Footpath	Hse No. 1	Seal	Left	4	2
51	HICKSON ST	7	SH2	283	HAYWOOD ST	Pram Crossing	Cnr Hickson + Bell St	Seal	Left	3	1
51	HICKSON ST	7	SH2	283	HAYWOOD ST	Toby	Hse No. 15	Seal	Left	4	1
51	HICKSON ST	7	SH2	283	HAYWOOD ST	Toby	Cnr Hickson + Bell St	Seal	Left	4	1
51	HICKSON ST	7	SH2	283	HAYWOOD ST	Footpath	Cnr SH2 + Hickson St	Seal	Right	3	8
51	HICKSON ST	7	SH2	167	BELL ST	Toby	Hse No. 6	Seal	Right	3	1
51	HICKSON ST	7	SH2	167	BELL ST	Toby	Hse No. 12	Seal	Right	3	1
12	HOSPITAL RD	7	SH2	106	EAST ST	Footpath	Outside Motel Entrance	A/C	Right	4	1
13	HUMPHRIES ST	7	SH2	358	WEST ST	Footpath	Outside Service Station	Concrete	Left	3	6
14	HUMPHRIES ST	7	SH2	358	WEST ST	Toby	Hse No. 12A	Concrete	Left	4	3
14	JELICOE ST	7	SH2	114	EAST ST	Service Cover	Cnr SH2 + Jellicoe St	N/A	Left	3	1
14	JELICOE ST	7	SH2	745	BOUNDARY	Footpath	Hse No. 10 bump	Concrete	Right	3	1
14	JELICOE ST	7	SH2	745	BOUNDARY	Footpath	Hse No. 34 bump	Concrete	Right	4	1

SWDC FOOTPATH INVENTORY 2011 (ROAD ORDER SUMMARY)

Road ID	Road Name	Start (m)	Start Description	End (m)	End Description	Type of Fault	Location of Fault	Material	Side	Severity (1-5)	Length Repair (m)
14	JELICOE ST	7 SH2	745 BOUNDARY	745	BOUNDARY	Service Cover	Cnr Massey + Jellicoe St	Concrete	Right	4	1
92	JELICOE ST (MARTINBO)	10 THE SQUARE	330 DUBLIN ST	330	DUBLIN ST	Footpath	Outside Service Station	A/C	Left	3	2
92	JELICOE ST (MARTINBO)	10 THE SQUARE	330 DUBLIN ST	330	DUBLIN ST	Toby	Outside That's Entertainment	A/C	Left	3	1
92	JELICOE ST (MARTINBO)	10 THE SQUARE	983 FERRY RD	983	FERRY RD	Footpath	Outside Kelsley	A/C	Right	4	5
92	JELICOE ST (MARTINBO)	10 THE SQUARE	983 FERRY RD	983	FERRY RD	Service Cover	Cnr Grey + Jellicoe St	A/C	Right	5	1
52	JOHNSON ST	7 FOX ST	441 HARRISON ST WEST	441	HARRISON ST WEST	Toby	Hse No. 7	A/C	Left	3	2
94	KANSAS ST (SOUTHERN)	17 THE SQUARE	138 NAPLES ST	138	NAPLES ST	Footpath	Hse No. 8	Concrete	Right	4	1
15	KEMPTON ST	226 YULE GR	613 WOOD ST	613	WOOD ST	Footpath	Hse No. 23	Concrete	Right	5	12
15	KEMPTON ST	226 YULE GR	613 WOOD ST	613	WOOD ST	Footpath	Hse No. 21	Concrete	Right	5	5
15	KEMPTON ST	226 YULE GR	613 WOOD ST	613	WOOD ST	Footpath	Hse No. 7	Concrete	Right	5	2
15	KEMPTON ST	226 YULE GR	613 WOOD ST	613	WOOD ST	Service Cover	Hse No. 59A	Concrete	Right	4	2
55	KOWHAI GR	7 CHURCHILL CRES	77 CDS	77	CDS	Footpath	LHS Cnr House	Concrete	Left	5	3
55	KOWHAI GR	63 CHURCHILL CRES	77 CDS	77	CDS	Service Cover	Hse No. 2	Concrete	Right	3	2
16	KURATAWHITI ST	7 SH2	951 MOLE ST	951	MOLE ST	Footpath	Outside Police Station	Seal	Left	5	2
16	KURATAWHITI ST	7 SH2	951 MOLE ST	951	MOLE ST	Footpath	Hse No. 2	Seal	Left	4	15
16	KURATAWHITI ST	7 SH2	951 MOLE ST	951	MOLE ST	Footpath	Hse No. 44	Seal	Left	4	8
16	KURATAWHITI ST	7 SH2	951 MOLE ST	951	MOLE ST	Footpath	Cnr West St	Seal	Left	4	5
16	KURATAWHITI ST	7 SH2	951 MOLE ST	951	MOLE ST	Toby	Hse No. 24	A/C	Left	3	1
16	KURATAWHITI ST	7 SH2	951 MOLE ST	951	MOLE ST	Tree Roots	Hse No. 12A	A/C	Left	5	4
57	LYON ST	7 SH2	610 WOODWARD ST	610	WOODWARD ST	Footpath	Hse No. 34	Concrete	Left	4	6
57	LYON ST	7 SH2	610 WOODWARD ST	610	WOODWARD ST	Trees	Cnr Revans + Lyon St	Concrete	Left	4	34
57	LYON ST	7 SH2	611 WOODWARD ST	611	WOODWARD ST	Footpath	Opp the Fell Museum	Concrete	Right	5	40
96	MALCOLM ST	8 JELICOE ST	456 REGENT ST	456	REGENT ST	Footpath	Hse No. 8	Concrete	Right	4	1
96	MALCOLM ST	8 JELICOE ST	456 REGENT ST	456	REGENT ST	Footpath	Hse No. 16	Concrete	Right	4	4
96	MALCOLM ST	8 JELICOE ST	456 REGENT ST	456	REGENT ST	Footpath	Hse No. 24	Concrete	Right	5	6
96	MALCOLM ST	8 JELICOE ST	456 REGENT ST	456	REGENT ST	Footpath	Hse No. 26	Concrete	Right	5	6
96	MALCOLM ST	8 JELICOE ST	456 REGENT ST	456	REGENT ST	Footpath	Hse No. 36	Concrete	Right	4	3
18	MCMASER ST	7 SH2	750 END	750	END	Footpath	Massey to End	Metal	Left	4	164
18	MCMASER ST	7 SH2	750 END	750	END	Footpath	End to Massey	Metal	Right	4	194
18	MCMASER ST	7 SH2	750 END	750	END	Toby	Cnr McMaster + East St	N/A	Right	3	1
21	MOLE ST	4 KURATAWHITI ST	182 SEAL JOIN	182	SEAL JOIN	Footpath	Unsealed	Metal	Left	5	178
59	MOORE ST	12 SH2	320 BRIDGE ABUTMENT	320	BRIDGE ABUTMENT	Toby	Hse No. 23	A/C	Left	4	1
97	NAPLES ST	6 REGENT ST	994 PRINCESS ST	994	PRINCESS ST	Footpath	Hse No. 82	Concrete	Left	5	1
97	NAPLES ST	6 REGENT ST	994 PRINCESS ST	994	PRINCESS ST	Footpath	Hole around Powerpole Cnr Naples+Sackville	A/C	Left	3	1
97	NAPLES ST	6 REGENT ST	994 PRINCESS ST	994	PRINCESS ST	Footpath	Hse No. 58	A/C	Left	5	5
97	NAPLES ST	6 REGENT ST	994 PRINCESS ST	994	PRINCESS ST	Footpath	Total length scab	Seal	Left	4	30
97	NAPLES ST	6 REGENT ST	994 PRINCESS ST	994	PRINCESS ST	Footpath	Hse No. 16	Seal	Left	5	7
97	NAPLES ST	6 REGENT ST	994 PRINCESS ST	994	PRINCESS ST	Pram Crossing	Cnr Naples + Regent St	Concrete	Left	5	1
97	NAPLES ST	6 REGENT ST	994 PRINCESS ST	994	PRINCESS ST	Toby	Hse No. 56	A/C	Left	3	1
97	NAPLES ST	6 REGENT ST	994 PRINCESS ST	994	PRINCESS ST	Toby	Cnr Naples + Jellicoe	A/C	Left	5	1

SWDC FOOTPATH INVENTORY 2011 (ROAD ORDER SUMMARY)

Road ID	Road Name	Start (m)	Start Description	End (m)	End Description	Type of Fault	Location of Fault	Material	Side	Severity (1-5)	Length Repair (m)
97	NAPLES ST	6	REAGENT ST	994	PRINCESS ST	Vegetation	Hse No. 84	Concrete	Left	3	8
97	NAPLES ST	6	REAGENT ST	994	PRINCESS ST	Vegetation	Hse No. 12	Seal	Left	3	18
98	NEW YORK ST	7	PRINCESS ST	994	REAGENT ST	Footpath	Hse No. 40	A/C	Right	3	1
98	NEW YORK ST	7	PRINCESS ST	994	REAGENT ST	Service Cover	Hse No. 10	A/C	Right	3	1
98	NEW YORK ST	7	PRINCESS ST	994	REAGENT ST	Service Cover	Hse No. 50	A/C	Right	3	1
98	NEW YORK ST	7	PRINCESS ST	994	REAGENT ST	Service Cover	Hse No. 70	A/C	Right	3	1
98	NEW YORK ST	7	PRINCESS ST	994	REAGENT ST	Toby	Hse No. 6	A/C	Right	3	1
98	NEW YORK ST	7	PRINCESS ST	994	REAGENT ST	Toby	Hse No. 28	A/C	Right	3	1
98	NEW YORK ST	7	PRINCESS ST	994	REAGENT ST	Toby	Hse No. 30	A/C	Right	3	1
98	NEW YORK ST	7	PRINCESS ST	994	REAGENT ST	Toby	Hse No. 48	A/C	Right	3	1
98	NEW YORK ST	7	PRINCESS ST	994	REAGENT ST	Trees	Hse No. 60	A/C	Right	3	1
98	NEW YORK ST	7	PRINCESS ST	994	REAGENT ST	Trees + Roots	Hse No. 54	A/C	Right	3	6
98	NEW YORK ST	7	PRINCESS ST	994	REAGENT ST	Vegetation	Hse No. 36	A/C	Right	5	5
98	NEW YORK ST	7	PRINCESS ST	994	REAGENT ST	Vegetation	Hse No. 40	A/C	Right	3	8
98	NEW YORK ST	7	PRINCESS ST	994	REAGENT ST	Vegetation	Cnr Cambridge + New York St	A/C	Right	3	9
281	OAKVIEW PLACE	8	WEST ST	52	CDS	Footpath	Outside Hse No. 2 bump	Concrete	Right	4	20
99	OHIO ST	3	NAPLES ST	293	STRASBOURGE ST	Footpath	Hse No. 17	A/C	Left	4	1
100	OXFORD ST	11	THE SQUARE	1900	CDS	Footpath	Hse No. 12	Concrete	Right	5	2
101	PANAMA ST	158	KITCHENER ST	295	STRASBOURGE ST	Footpath	Hse No. 19	Seal	Left	3	6
101	PANAMA ST	6	NAPLES ST	295	STRASBOURGE ST	Footpath	Hse No. 22	Seal	Right	3	18
101	PANAMA ST	6	NAPLES ST	295	STRASBOURGE ST	Footpath	Total length	Seal	Right	5	130
101	PANAMA ST	6	NAPLES ST	295	STRASBOURGE ST	Toby	Hse No. 20	Seal	Right	4	1
25	PAPAWAI RD	7	SH2	114	EAST ST	Footpath	Cnr SH2 + Papawai Rd	Concrete	Left	5	10
25	PAPAWAI RD	7	SH2	114	EAST ST	Footpath	1st hse on LHS	Concrete	Left	5	15
25	PAPAWAI RD	7	SH2	114	EAST ST	Footpath	Cnr Papawai + East St	Concrete	Left	5	8
102	PRINCESS ST	126	EAST ST	263	50/100 KPH SIGN	Trees	Full length	Trees	Right	5	15
102	PRINCESS ST	9	DUBLIN ST	423	STRASBOURGE ST	Footpath	Outside Church	Seal	Left	3	1
102	PRINCESS ST	122	VENICE ST	760	NEW YORK ST	Footpath	Hse No. 32	Seal	Right	4	10
102	PRINCESS ST	122	VENICE ST	760	NEW YORK ST	Footpath	Total length	Seal	Right	4	100
26	READING ST	6	NORTH ST	916	SEAL JOIN	Footpath	Total length	Seal	Right	4	230
26	READING ST	6	NORTH ST	916	SEAL JOIN	Footpath	Cnr Reading + McMaster St	Seal	Right	5	13
26	READING ST	6	NORTH ST	916	SEAL JOIN	Footpath	Hse No. 62	Metal	Right	5	40
26	READING ST	6	NORTH ST	916	SEAL JOIN	Footpath	Hse No. 44	A/C	Right	5	1
26	READING ST	6	NORTH ST	916	SEAL JOIN	Footpath	Hse No. 40	A/C	Right	4	1
26	READING ST	6	NORTH ST	916	SEAL JOIN	Footpath	Hse No. 26	A/C	Right	3	1
26	READING ST	6	NORTH ST	916	SEAL JOIN	Footpath	Hse No. 23	A/C	Right	5	2
26	READING ST	6	NORTH ST	916	SEAL JOIN	Footpath	Cnr North St	A/C	Right	4	3
26	READING ST	6	NORTH ST	916	SEAL JOIN	Service Cover	Hse No. 18	A/C	Right	3	1
26	READING ST	6	NORTH ST	916	SEAL JOIN	Service Cover	Hse No. 10	A/C	Right	3	1
26	READING ST	6	NORTH ST	916	SEAL JOIN	Service Cover	Hse No. 6	A/C	Right	3	1

SWDC FOOTPATH INVENTORY 2011 (ROAD ORDER SUMMARY)

Road ID	Road Name	Start (m)	Start Description	End (m)	End Description	Type of Fault	Location of Fault	Material	Side	Severity (1-5)	Length Repair (m)
26	READING ST	6	NORTH ST	916	SEAL JOIN	Toby	Hse No. 28	A/C	Right	4	1
26	READING ST	6	NORTH ST	916	SEAL JOIN	Trees	Hse No. 42	A/C	Right	3	10
104	REGENT ST	689	NEW YORK ST	1359	DUBLIN ST	Pram Crossing	Cnr Regent + Strabourge St	A/C	Right	3	1
104	REGENT ST	689	NEW YORK ST	1359	DUBLIN ST	Pram Crossing	Cnr Regent + Cologne St	A/C	Right	3	1
104	REGENT ST	689	NEW YORK ST	1359	DUBLIN ST	Service Cover	Hse No. 107	A/C	Right	4	1
104	REGENT ST	689	NEW YORK ST	1359	DUBLIN ST	Vegetation	Hse No. 93	A/C	Right	3	12
63	REVANS ST	5	WAKEFIELD ST	216	WATT ST	Toby	Hse No. 25	Concrete	Right	3	1
106	ROBERTS ST	5	DUBLIN ST	203	GREY ST	Footpath	Outside Park alongside pine trees	A/C	Left	4	3
107	SACKVILLE ST	8	NEW YORK ST	761	DUBLIN ST	Footpath	Cnr Venice + Sackville St	A/C	Right	4	1
107	SACKVILLE ST	8	NEW YORK ST	761	DUBLIN ST	Vegetation	Hse No. 11	A/C	Right	3	5
107	SACKVILLE ST	8	NEW YORK ST	761	DUBLIN ST	Vegetation	Cnr Venice + Sackville St	A/C	Right	3	8
276	SH2 FITZHERBERT ST (F)	118	BOUNDARY RD	2008	100 KPH SIGN	Footpath	Hse No. 148	Concrete	Left	5	3
276	SH2 FITZHERBERT ST (F)	118	BOUNDARY RD	2008	100 KPH SIGN	Footpath	Hse No. 138A	Concrete	Left	5	6
276	SH2 FITZHERBERT ST (F)	118	BOUNDARY RD	2008	100 KPH SIGN	Pram Crossing	Cnr Wallace + Lyons St	A/C	Left	4	1
276	SH2 FITZHERBERT ST (F)	118	BOUNDARY RD	2008	100 KPH SIGN	Pram Crossing	Cnr SH + Lyons St	A/C	Left	4	1
276	SH2 FITZHERBERT ST (F)	118	BOUNDARY RD	2008	100 KPH SIGN	Pram Crossing	Cnr SH + Daniel St	A/C	Left	5	7
276	SH2 FITZHERBERT ST (F)	118	BOUNDARY RD	2008	100 KPH SIGN	Toby	Hse No. 108	Concrete	Left	3	1
276	SH2 FITZHERBERT ST (F)	118	BOUNDARY RD	2008	100 KPH SIGN	Toby	Hse No. 54	A/C	Left	5	1
276	SH2 FITZHERBERT ST (F)	118	BOUNDARY RD	2008	100 KPH SIGN	Trees	Cnr SH2 + Boundary Rd	Concrete	Left	5	18
276	SH2 FITZHERBERT ST (F)	118	BOUNDARY RD	2008	100 KPH SIGN	Trees	Hse No. 136	Concrete	Left	4	12
276	SH2 FITZHERBERT ST (F)	118	BOUNDARY RD	2008	100 KPH SIGN	Trees	Hse No. 134	Concrete	Left	4	19
276	SH2 FITZHERBERT ST (F)	118	BOUNDARY RD	2008	100 KPH SIGN	Trees	Hse No. 112	Concrete	Left	3	8
276	SH2 FITZHERBERT ST (F)	118	BOUNDARY RD	2008	100 KPH SIGN	Trees	Cnr SH + Ludlam St	A/C	Left	3	40
266	SH2 MASTERTON-WELLII	685	NORTH ST	2843	HOSPITAL RD	Footpath	Outside paint shop	Concrete	Left	4	3
266	SH2 MASTERTON-WELLII	685	NORTH ST	2843	HOSPITAL RD	Footpath	Hse No. 5	Concrete	Left	4	5
266	SH2 MASTERTON-WELLII	685	NORTH ST	2843	HOSPITAL RD	Footpath	Hse No. 93	Concrete	Left	4	10
266	SH2 MASTERTON-WELLII	685	NORTH ST	2843	HOSPITAL RD	Footpath	Hse No. 19	Concrete	Left	3	5
266	SH2 MASTERTON-WELLII	685	NORTH ST	2843	HOSPITAL RD	Footpath	Outside Briarwood	Concrete	Left	4	2
266	SH2 MASTERTON-WELLII	685	NORTH ST	2843	HOSPITAL RD	Footpath	Hse No. 27A	Concrete	Left	3	1
266	SH2 MASTERTON-WELLII	685	NORTH ST	2843	HOSPITAL RD	Footpath	Outside Moon Flower	Concrete	Left	3	5
266	SH2 MASTERTON-WELLII	685	NORTH ST	2843	HOSPITAL RD	Footpath	Opp Hastwell ST	Concrete	Left	4	7
266	SH2 MASTERTON-WELLII	685	NORTH ST	2843	HOSPITAL RD	Footpath	Hse No. 119	Concrete	Left	5	8
266	SH2 MASTERTON-WELLII	685	NORTH ST	2843	HOSPITAL RD	Footpath	Hse No. 119	Concrete	Left	5	5
266	SH2 MASTERTON-WELLII	685	NORTH ST	2843	HOSPITAL RD	Footpath	Hse No. 131	Concrete	Left	4	1
266	SH2 MASTERTON-WELLII	685	NORTH ST	2843	HOSPITAL RD	Footpath	Outside Church	Concrete	Left	5	8
266	SH2 MASTERTON-WELLII	685	NORTH ST	2843	HOSPITAL RD	Footpath	Corner house (near #140)	Concrete	Left	4	5
266	SH2 MASTERTON-WELLII	685	NORTH ST	2843	HOSPITAL RD	Footpath	Hse No. 145	Concrete	Left	5	2
266	SH2 MASTERTON-WELLII	685	NORTH ST	2843	HOSPITAL RD	Footpath	Hse No. 153	Concrete	Left	4	1
266	SH2 MASTERTON-WELLII	685	NORTH ST	2843	HOSPITAL RD	Footpath	Hse No. 157	Concrete	Left	5	8
266	SH2 MASTERTON-WELLII	685	NORTH ST	2843	HOSPITAL RD	Footpath	Outside Orlington Timber	Concrete	Left	5	6

SWDC FOOTPATH INVENTORY 2011 (ROAD ORDER SUMMARY)

Road ID	Road Name	Start (m)	Start Description	End (m)	End Description	Type of Fault	Location of Fault	Material	Side	Severity (1-5)	Length Repair (m)
266	SH2 MASTERTON-WELLII	685	NORTH ST	2843	HOSPITAL RD	Footpath	Outside Farmlands	Concrete	Left	5	6
266	SH2 MASTERTON-WELLII	685	NORTH ST	2843	HOSPITAL RD	Footpath	Outside Farmlands	Concrete	Left	5	10
266	SH2 MASTERTON-WELLII	685	NORTH ST	2843	HOSPITAL RD	Pram Crossing	Sump right on crossing	Concrete	Left	5	1
266	SH2 MASTERTON-WELLII	685	NORTH ST	2843	HOSPITAL RD	Service Cover	Hse No. 25	Concrete	Left	3	1
266	SH2 MASTERTON-WELLII	685	NORTH ST	2843	HOSPITAL RD	Service Cover	Outside Arbor Motel	Concrete	Left	3	1
266	SH2 MASTERTON-WELLII	685	NORTH ST	2843	HOSPITAL RD	Service Cover	Hse No. 37	Concrete	Left	3	1
266	SH2 MASTERTON-WELLII	685	NORTH ST	2843	HOSPITAL RD	Service Cover	Outside Greytown Community Hall	Concrete	Left	5	5
266	SH2 MASTERTON-WELLII	685	NORTH ST	2843	HOSPITAL RD	Service Cover	Outside NZ Birds Gallery	Concrete	Left	4	2
266	SH2 MASTERTON-WELLII	685	NORTH ST	2843	HOSPITAL RD	Service Cover	Outside Swan	Concrete	Left	3	1
266	SH2 MASTERTON-WELLII	685	NORTH ST	2843	HOSPITAL RD	Service Cover	Near Public Car park	Concrete	Left	3	2
266	SH2 MASTERTON-WELLII	685	NORTH ST	2843	HOSPITAL RD	Service Cover	Hse No. 159	Concrete	Left	4	1
266	SH2 MASTERTON-WELLII	685	NORTH ST	2843	HOSPITAL RD	Toby	Hse No. 41	Concrete	Left	3	1
266	SH2 MASTERTON-WELLII	685	NORTH ST	2843	HOSPITAL RD	Toby	Outside Butcher Shop	Concrete	Left	5	1
266	SH2 MASTERTON-WELLII	685	NORTH ST	2843	HOSPITAL RD	Toby	Outside Crighton Timber	Concrete	Left	3	1
266	SH2 MASTERTON-WELLII	685	NORTH ST	2843	HOSPITAL RD	Tree	Outside paint shop	Concrete	Left	3	12
266	SH2 MASTERTON-WELLII	685	NORTH ST	2843	HOSPITAL RD	Trees	Hse No. 143	Concrete	Left	4	12
266	SH2 MASTERTON-WELLII	685	NORTH ST	2843	HOSPITAL RD	Vegetation	Hse No. 13	Concrete	Left	4	14
266	SH2 MASTERTON-WELLII	685	NORTH ST	2843	HOSPITAL RD	Vegetation	Outside RealEstate Information	Concrete	Left	3	3
266	SH2 MASTERTON-WELLII	685	NORTH ST	2843	HOSPITAL RD	Vegetation	Hse No. 129	Concrete	Left	3	30
266	SH2 MASTERTON-WELLII	685	NORTH ST	2843	HOSPITAL RD	Vegetation	Hse No. 167	Concrete	Left	3	15
266	SH2 MASTERTON-WELLII	685	NORTH ST	2843	HOSPITAL RD	Vegetation	Hse No. 179	Concrete	Left	3	14
266	SH2 MASTERTON-WELLII	685	NORTH ST	2958	50/100KPH SIGNS	Footpath	Outside Hireworld	A/C	Right	5	12
266	SH2 MASTERTON-WELLII	685	NORTH ST	2958	50/100KPH SIGNS	Footpath	Hse No. 234	A/C	Right	3	3
266	SH2 MASTERTON-WELLII	685	NORTH ST	2958	50/100KPH SIGNS	Footpath	Hse No. 190	A/C	Right	3	1
266	SH2 MASTERTON-WELLII	685	NORTH ST	2958	50/100KPH SIGNS	Footpath	Hse No. 174	A/C	Right	3	35
266	SH2 MASTERTON-WELLII	685	NORTH ST	2958	50/100KPH SIGNS	Footpath	Hse No. 224	A/C	Right	5	1
266	SH2 MASTERTON-WELLII	685	NORTH ST	2958	50/100KPH SIGNS	Footpath	ROW entrance alongside VetCare	A/C	Right	5	5
266	SH2 MASTERTON-WELLII	685	NORTH ST	2958	50/100KPH SIGNS	Footpath	Hse No. 132	A/C	Right	5	3
266	SH2 MASTERTON-WELLII	685	NORTH ST	2958	50/100KPH SIGNS	Footpath	ROW Hse No. 132	A/C	Right	5	8
266	SH2 MASTERTON-WELLII	685	NORTH ST	2958	50/100KPH SIGNS	Footpath	Hse No. 110 service cover	A/C	Right	3	2
266	SH2 MASTERTON-WELLII	685	NORTH ST	2958	50/100KPH SIGNS	Footpath	ROW by Hse No. 64	A/C	Right	4	1
266	SH2 MASTERTON-WELLII	685	NORTH ST	2958	50/100KPH SIGNS	Footpath	Outside Fire Station	A/C	Right	3	1
266	SH2 MASTERTON-WELLII	685	NORTH ST	2958	50/100KPH SIGNS	Footpath	Hse No. 44	A/C	Right	3	1
266	SH2 MASTERTON-WELLII	685	NORTH ST	2958	50/100KPH SIGNS	Footpath	Hse No. 6	A/C	Right	5	1
266	SH2 MASTERTON-WELLII	685	NORTH ST	2958	50/100KPH SIGNS	Service Cover	Hse No. 92	A/C	Right	3	2
266	SH2 MASTERTON-WELLII	685	NORTH ST	2958	50/100KPH SIGNS	Service Cover	Hse No. 72	A/C	Right	3	1
266	SH2 MASTERTON-WELLII	685	NORTH ST	2958	50/100KPH SIGNS	Toby	Hse No. 32	A/C	Right	3	2
266	SH2 MASTERTON-WELLII	685	NORTH ST	2958	50/100KPH SIGNS	Toby	Hse No. 20	A/C	Right	3	1
266	SH2 MASTERTON-WELLII	685	NORTH ST	2958	50/100KPH SIGNS	Toby	Hse No. 18	A/C	Right	3	1
266	SH2 MASTERTON-WELLII	685	NORTH ST	2958	50/100KPH SIGNS	Toby	Hse No. 2	A/C	Right	3	1

SWDC FOOTPATH INVENTORY 2011 (ROAD ORDER SUMMARY)

Road ID	Road Name	Start (m)	Start Description	End (m)	End Description	Type of Fault	Location of Fault	Material	Side	Severity (1-5)	Length Repair (m)
31	WEST ST	494	SOUTH ST	2311	NORTH ST	Footpath	Hse No. 11	Concrete	Right	4	1
31	WEST ST	494	SOUTH ST	2311	NORTH ST	Footpath	Hse No. 19	Concrete	Right	4	1
31	WEST ST	494	SOUTH ST	2311	NORTH ST	Footpath	Hse No. 23	Concrete	Right	4	1
31	WEST ST	494	SOUTH ST	2311	NORTH ST	Footpath	Hse No. 63	Concrete	Right	4	3
31	WEST ST	494	SOUTH ST	2311	NORTH ST	Footpath	Vacant Section	Concrete	Right	4	3
31	WEST ST	494	SOUTH ST	2311	NORTH ST	Footpath	Outside Construction site	Concrete	Right	4	3
31	WEST ST	494	SOUTH ST	2311	NORTH ST	Footpath	Hse No. 129	Seal	Right	4	2
31	WEST ST	494	SOUTH ST	2311	NORTH ST	Footpath	Hse No. 139A	Seal	Right	5	4
31	WEST ST	494	SOUTH ST	2311	NORTH ST	Footpath	Hse No. 153	Seal	Right	5	8
31	WEST ST	494	SOUTH ST	2311	NORTH ST	Footpath	Hse No. 159	Seal	Right	5	5
31	WEST ST	494	SOUTH ST	2311	NORTH ST	Footpath	Hse No. 143	Seal	Right	4	4
32	WOOD ST	7	SH2	2311	NORTH ST	Service Cover	Cnr LHS	A/C	Left	4	12
32	WOOD ST	7	SH2	286	KEMPTON ST	Footpath	Cnr Wood + West St	Concrete	Left	5	5
32	WOOD ST	7	SH2	286	KEMPTON ST	Footpath	Hse No. 8A	Concrete	Left	5	4
32	WOOD ST	7	SH2	286	KEMPTON ST	Footpath	Hse No. 16	Concrete	Left	4	4
32	WOOD ST	7	SH2	286	KEMPTON ST	Toby	Hse No. 2	A/C	Left	3	1
32	WOOD ST	7	SH2	286	KEMPTON ST	Toby	Hse No. 4	A/C	Left	5	1
32	WOOD ST	7	SH2	103	WEST ST	Footpath	Cnr RHS	A/C	Right	4	3
119	WOODWARD ST NO 3	6	WAITE ST	171	WALLACE ST	Footpath	Hse No. 79	Concrete	Right	5	1
119	WOODWARD ST NO 3	6	WAITE ST	171	WALLACE ST	Footpath	Hse No. 67	Concrete	Right	5	1
119	WOODWARD ST NO 3	6	WAITE ST	171	WALLACE ST	Footpath	Hse No. 61	Concrete	Right	3	4
TOTAL FAULTS (metres):											4625

421 Faults

SWDC FOOTPATH INVENTORY 2011 (FAULT ORDER SUMMARY)

Road ID	Road Name	Start (m)	Start Description	End (m)	End Description	Type of Fault	Location of Fault	Material	Side	Severity (1-5)	Length Repair (m)
FOOTPATH FAULTS											
34	BELL ST	230	BIRDWOOD ST	309	JOHNSON ST	Footpath	Hse No. 15A	Concrete	Left	4	5
34	BELL ST	230	BIRDWOOD ST	309	JOHNSON ST	Footpath	Hse No. 17	Concrete	Left	4	1
34	BELL ST	230	BIRDWOOD ST	309	JOHNSON ST	Footpath	Cnr Wakefield + Bell St	Concrete	Left	4	5
34	BELL ST	230	BIRDWOOD ST	309	JOHNSON ST	Footpath	Cnr Johnson + Bell St	Concrete	Left	4	1
34	BELL ST	230	BIRDWOOD ST	309	JOHNSON ST	Footpath	Cnr Hse Johnson + Bell St	Concrete	Left	5	1
35	BETHUNE ST	6	SH2	428	WOODWARD ST	Footpath	Hse No. 13	Concrete	Left	4	8
35	BETHUNE ST	6	SH2	428	WOODWARD ST	Footpath	Hse No. 15	Concrete	Left	4	8
36	BIRDWOOD ST	7	SH2	600	END	Footpath	Outside Balavien	Concrete	Right	5	30
36	BIRDWOOD ST	7	SH2	600	END	Footpath	Hse No. 18	Concrete	Right	5	6
36	BIRDWOOD ST	7	SH2	600	END	Footpath	Cnr Haywood + Birdwood	Concrete	Right	5	8
36	BIRDWOOD ST	7	SH2	600	END	Footpath	Hse No. 6	Concrete	Right	5	8
36	BIRDWOOD ST	7	SH2	600	END	Footpath	Hse No. 4	Concrete	Right	5	2
36	BIRDWOOD ST	7	SH2	600	END	Footpath	SH2 + Fox St	Concrete	Right	5	37
37	BRANDON ST	12	WAITE ST	659	DANIEL ST	Footpath	Cnr Brandon + Lyon St	A/C	Left	5	2
37	BRANDON ST	12	WAITE ST	659	DANIEL ST	Footpath	Hse No. 66	A/C	Left	5	2
75	BROADWAY ST	8	NEW YORK ST	760	DUBLIN ST	Footpath	Vehicle Crossing	Concrete	Right	3	4
75	BROADWAY ST	8	NEW YORK ST	760	DUBLIN ST	Footpath	Hse No. 33	A/C	Right	4	1
75	BROADWAY ST	8	NEW YORK ST	760	DUBLIN ST	Footpath	Cnr Broadway + New York St	A/C	Right	4	2
75	BROADWAY ST	8	NEW YORK ST	760	DUBLIN ST	Footpath	Vacant Section	A/C	Right	5	3
76	CAMBRIDGE RD	11	THE SQUARE	333	NEW YORK ST	Footpath	Cnr Cologne + Cambridge St	A/C	Left	3	2
39	CHURCHILL CRES	3	WATT ST	395	END	Footpath	Hse No. 3	Concrete	Left	4	7
39	CHURCHILL CRES	3	WATT ST	395	END	Footpath	Hse No. 8	Concrete	Left	4	8
39	CHURCHILL CRES	3	WATT ST	395	END	Footpath	Hse No. 7	Concrete	Left	4	7
39	CHURCHILL CRES	3	WATT ST	395	END	Footpath	Hse No. 11	Concrete	Left	4	6
39	CHURCHILL CRES	3	WATT ST	395	END	Footpath	Hse No. 15	Concrete	Left	4	5
39	CHURCHILL CRES	3	WATT ST	395	END	Footpath	Hse No. 17	Concrete	Left	4	6
39	CHURCHILL CRES	3	WATT ST	395	END	Footpath	Hse No. 19	Concrete	Left	4	9
39	CHURCHILL CRES	3	WATT ST	395	END	Footpath	Hse No. 4	Concrete	Left	4	28
39	CHURCHILL CRES	3	WATT ST	395	END	Footpath	Hse No. 2	Concrete	Left	4	4
39	CHURCHILL CRES	3	WATT ST	395	END	Footpath	Hse No. 10	Concrete	Left	5	25
77	COLOGNE ST	6	RECENT ST	993	PRINCESS ST	Footpath	Hse No. 34	Seal	Left	5	12
77	COLOGNE ST	6	RECENT ST	993	PRINCESS ST	Footpath	Hse No. 34	Seal	Left	5	3
77	COLOGNE ST	6	RECENT ST	993	PRINCESS ST	Footpath	Hse No. 30	Seal	Left	5	7
77	COLOGNE ST	6	RECENT ST	993	PRINCESS ST	Footpath	Veh Cross cnr Cologne+Broadway	Concrete	Left	5	8
78	CORK ST	5	NAPLES ST	294	STRASBOURG ST	Footpath	Hse No. 28	A/C	Right	4	2
84	DANIEL ST (MARTINBOROUGH)	6	RECENT ST	461	JELICOE ST	Footpath	Hse No. 19	Seal	Right	3	3
84	DANIEL ST (MARTINBOROUGH)	6	RECENT ST	461	JELICOE ST	Footpath	Scab total length	Seal	Right	3	400
43	DONALD ST	8	WAITE ST	375	SH53	Footpath	Trees + grass total length	Concrete	Right	3	125
85	DUBLIN ST	186	ROBERTS ST	775	SACKVILLE ST	Footpath	Hse No. 59	A/C	Left	4	3

SWDC FOOTPATH INVENTORY 2011 (FAULT ORDER SUMMARY)

Road ID	Road Name	Start (m)	Start Description	End (m)	End Description	Type of Fault	Location of Fault	Material	Side	Severity (1-5)	Length Repair (m)
85	DUBLIN ST	0	PRINCESS ST	520	JELICOE ST	Footpath	Hse No. 42	Concrete	Right	5	6
85	DUBLIN ST	0	PRINCESS ST	520	JELICOE ST	Footpath	Vacant Section	Concrete	Right	5	2
9	EAST ST	11	WAKELIN ST	2126	NORTH ST	Footpath	Hse No. 44	Concrete	Left	2	1
9	EAST ST	11	WAKELIN ST	2126	NORTH ST	Footpath	Hse No. 32	Concrete	Left	2	1
9	EAST ST	11	WAKELIN ST	2126	NORTH ST	Footpath	Near No. 93	Concrete	Left	4	1
9	EAST ST	11	WAKELIN ST	2126	NORTH ST	Footpath	Hse No. 64	Concrete	Left	4	12
9	EAST ST	11	WAKELIN ST	2126	NORTH ST	Footpath	Hse No. 80	Concrete	Left	5	5
9	EAST ST	11	WAKELIN ST	2126	NORTH ST	Footpath	Hse No. 68	Concrete	Left	5	23
9	EAST ST	11	WAKELIN ST	2126	NORTH ST	Footpath	Hse No. 66 + No. 6	Concrete	Left	5	12
9	EAST ST	11	HOSPITAL RD	2314	LOASBY PL	Footpath	Outside bowling green	Concrete	Right	2	47
9	EAST ST	11	HOSPITAL RD	2314	LOASBY PL	Footpath	Hse No. 1	Concrete	Right	3	1
9	EAST ST	11	HOSPITAL RD	2314	LOASBY PL	Footpath	Hse No. 5	Concrete	Right	3	1
9	EAST ST	11	HOSPITAL RD	2314	LOASBY PL	Footpath	Hse No. 167	Concrete	Right	3	1
9	EAST ST	11	HOSPITAL RD	2314	LOASBY PL	Footpath	Cnr Church + East St	Concrete	Right	4	1
9	EAST ST	11	HOSPITAL RD	2314	LOASBY PL	Footpath	Hse No. 145	Concrete	Right	4	12
9	EAST ST	11	HOSPITAL RD	2314	LOASBY PL	Footpath	Hse No. 111	Concrete	Right	5	2
44	FARRIER GR	13	BRANDON ST	133	CDS	Footpath	Hse No. 8	Concrete	Left	5	8
44	FARRIER GR	13	BRANDON ST	133	CDS	Footpath	Hse No. 3	Concrete	Left	5	6
44	FARRIER GR	13	BRANDON ST	133	CDS	Footpath	Hse No. 4	Concrete	Left	5	8
44	FARRIER GR	13	BRANDON ST	133	CDS	Footpath	Hse No. 5	Concrete	Left	5	10
44	FARRIER GR	13	BRANDON ST	133	CDS	Footpath	Hse No. 6	Concrete	Left	5	6
44	FARRIER GR	13	BRANDON ST	133	CDS	Footpath	Hse No. 8	Concrete	Left	5	5
45	FOX ST	8	DONALD ST	1163	WALLACE ST	Footpath	Hse No. 2	A/C	Left	3	2
45	FOX ST	8	DONALD ST	1163	WALLACE ST	Footpath	Hse No. 16	A/C	Left	4	2
45	FOX ST	8	DONALD ST	1163	WALLACE ST	Footpath	Vacant Section	A/C	Left	5	3
45	FOX ST	83	WAITE ST	1183	WATT ST	Footpath	Hse No. 43	Concrete	Right	4	4
90	GREY ST	460	ROBERTS ST	646	END	Footpath	Total length poor condition	Seal	Left	3	180
46	HARDIE GR	6	WAITE ST	175	CDS	Footpath	Hse No. 20	Concrete	Left	5	5
46	HARDIE GR	6	WAITE ST	175	CDS	Footpath	Hse No. 21	Concrete	Right	4	4
46	HARDIE GR	6	WAITE ST	175	CDS	Footpath	Hse No. 6	Concrete	Right	5	5
46	HARDIE GR	6	WAITE ST	175	CDS	Footpath	Hse No. 4	Concrete	Right	5	3
48	HARRISON ST WEST	6	JOHNSON ST	215	WAKEFIELD ST	Footpath	46m over length settlement	Concrete	Left	3	46
50	HAYWOOD ST	5	HICKSON ST	212	BIRDWOOD ST	Footpath	Hse No. 8	Seal	Left	4	4
50	HAYWOOD ST	5	HICKSON ST	212	BIRDWOOD ST	Footpath	Hse No. 5	Seal	Left	4	5
50	HAYWOOD ST	5	HICKSON ST	212	BIRDWOOD ST	Footpath	Hse No. 12	Seal	Left	5	10
50	HAYWOOD ST	5	HICKSON ST	212	BIRDWOOD ST	Footpath	Hse No. 17	Seal	Left	5	15
51	HICKSON ST	7	SH2	283	HAYWOOD ST	Footpath	Hse No. 5	Seal	Left	3	1
51	HICKSON ST	7	SH2	283	HAYWOOD ST	Footpath	Hse No. 1	Seal	Left	4	2
51	HICKSON ST	7	SH2	167	BELL ST	Footpath	Cnr SH2 + Hickson St	Seal	Right	3	8
12	HOSPITAL RD	7	SH2	106	EAST ST	Footpath	Outside Motel Entrance	A/C	Right	4	1
13	HUMPHRIES ST	7	SH2	358	WEST ST	Footpath	Outside Service Station	Concrete	Left	3	6

SWDC FOOTPATH INVENTORY 2011 (FAULT ORDER SUMMARY)

Road ID	Road Name	Start (m)	Start Description	End (m)	End Description	Type of Fault	Location of Fault	Material	Side	Severity (1-5)	Length Repair (m)
14	JELLCOE ST	7 SH2	7 SH2	745	BOUNDARY	Footpath	Hse No. 10 bump	Concrete	Right	3	1
14	JELLCOE ST	7 SH2	7 SH2	745	BOUNDARY	Footpath	Hse No. 34 bump	Concrete	Right	4	1
92	JELLCOE ST (MARTINBORO)	10 THE SQUARE	10 THE SQUARE	330	DUBLIN ST	Footpath	Outside Service Station	A/C	Left	3	2
92	JELLCOE ST (MARTINBORO)	10 THE SQUARE	10 THE SQUARE	983	FERRY RD	Footpath	Outside Keinsley	A/C	Right	4	5
94	KANSAS ST (SOUTHERN LEG)	17 THE SQUARE	17 THE SQUARE	138	NAPLES ST	Footpath	Hse No. 8	Concrete	Right	4	1
15	KEMPTON ST	226 YULE GR	226 YULE GR	613	WOOD ST	Footpath	Hse No. 23	Concrete	Right	5	12
15	KEMPTON ST	226 YULE GR	226 YULE GR	613	WOOD ST	Footpath	Hse No. 21	Concrete	Right	5	5
15	KEMPTON ST	226 YULE GR	226 YULE GR	613	WOOD ST	Footpath	Hse No. 7	Concrete	Right	5	2
55	KOWHAI GR	7 CHURCHILL CRES	7 CHURCHILL CRES	77	CDS	Footpath	LHS Cnr House	Concrete	Left	5	3
16	KURATAWHITI ST	7 SH2	7 SH2	951	MOLE ST	Footpath	Hse No. 2	Seal	Left	4	15
16	KURATAWHITI ST	7 SH2	7 SH2	951	MOLE ST	Footpath	Hse No. 44	Seal	Left	4	8
16	KURATAWHITI ST	7 SH2	7 SH2	951	MOLE ST	Footpath	Cnr West St	Seal	Left	4	5
16	KURATAWHITI ST	7 SH2	7 SH2	951	MOLE ST	Footpath	Outside Police Station	Seal	Left	5	2
57	LYON ST	7 SH2	7 SH2	610	WOODWARD ST	Footpath	Hse No. 34	Concrete	Left	4	6
57	LYON ST	7 SH2	7 SH2	611	WOODWARD ST	Footpath	Opp the Fell Museum	Concrete	Right	5	40
96	MALCOLM ST	8 JELLCOE ST	8 JELLCOE ST	456	RECENT ST	Footpath	Hse No. 8	Concrete	Right	4	1
96	MALCOLM ST	8 JELLCOE ST	8 JELLCOE ST	456	RECENT ST	Footpath	Hse No. 16	Concrete	Right	4	4
96	MALCOLM ST	8 JELLCOE ST	8 JELLCOE ST	456	RECENT ST	Footpath	Hse No. 36	Concrete	Right	4	3
96	MALCOLM ST	8 JELLCOE ST	8 JELLCOE ST	456	RECENT ST	Footpath	Hse No. 24	Concrete	Right	5	6
96	MALCOLM ST	8 JELLCOE ST	8 JELLCOE ST	456	RECENT ST	Footpath	Hse No. 26	Concrete	Right	5	6
18	MCMMASTER ST	7 SH2	7 SH2	750	END	Footpath	Massey to End	Metal	Left	4	164
18	MCMMASTER ST	7 SH2	7 SH2	750	END	Footpath	End to Massey	Metal	Right	4	194
21	MOLE ST	4 KURATAWHITI ST	4 KURATAWHITI ST	182	SEAL JOIN	Footpath	Unsealed	Metal	Left	5	178
97	NAPLES ST	6 RECENT ST	6 RECENT ST	994	PRINCESS ST	Footpath	Hole around Powerpole Cnr Naples+Sackville	A/C	Left	3	1
97	NAPLES ST	6 RECENT ST	6 RECENT ST	994	PRINCESS ST	Footpath	Total length scab	Seal	Left	4	30
97	NAPLES ST	6 RECENT ST	6 RECENT ST	994	PRINCESS ST	Footpath	Hse No. 82	Concrete	Left	5	1
97	NAPLES ST	6 RECENT ST	6 RECENT ST	994	PRINCESS ST	Footpath	Hse No. 58	A/C	Left	5	5
97	NAPLES ST	6 RECENT ST	6 RECENT ST	994	PRINCESS ST	Footpath	Hse No. 16	Seal	Left	5	7
98	NEW YORK ST	7 PRINCESS ST	7 PRINCESS ST	994	RECENT ST	Footpath	Hse No. 40	A/C	Right	3	1
281	OAKVIEW PLACE	8 WEST ST	8 WEST ST	52	CDS	Footpath	Outside Hse No. 2 bump	Concrete	Right	4	1
99	OHIO ST	3 NAPLES ST	3 NAPLES ST	293	STRASBOURG ST	Footpath	Hse No. 17	A/C	Left	4	2
100	OXFORD ST	11 THE SQUARE	11 THE SQUARE	1900	CDS	Footpath	Hse No. 12	Concrete	Right	5	2
101	PANAMA ST	158 KITCHENER ST	158 KITCHENER ST	295	STRASBOURG ST	Footpath	Hse No. 19	Seal	Left	3	6
101	PANAMA ST	6 NAPLES ST	6 NAPLES ST	295	STRASBOURG ST	Footpath	Hse No. 22	Seal	Right	3	18
101	PANAMA ST	6 NAPLES ST	6 NAPLES ST	295	STRASBOURG ST	Footpath	Total length	Seal	Right	5	130
25	PAPAWAI RD	7 SH2	7 SH2	114	EAST ST	Footpath	Cnr SH2 + Papawai Rd	Concrete	Left	5	10
25	PAPAWAI RD	7 SH2	7 SH2	114	EAST ST	Footpath	1st hse on LHS	Concrete	Left	5	15
25	PAPAWAI RD	7 SH2	7 SH2	114	EAST ST	Footpath	Cnr Papawai + East St	Concrete	Left	5	8
102	PRINCESS ST	9 DUBLIN ST	9 DUBLIN ST	423	STRASBOURG ST	Footpath	Outside Church	Seal	Left	3	1
102	PRINCESS ST	122 VENICE ST	122 VENICE ST	760	NEW YORK ST	Footpath	Hse No. 32	Seal	Right	4	10
102	PRINCESS ST	122 VENICE ST	122 VENICE ST	760	NEW YORK ST	Footpath	Total Length	Seal	Right	4	100

SWDC FOOTPATH INVENTORY 2011 (FAULT ORDER SUMMARY)

Road ID	Road Name	Start (m)	Start Description	End (m)	End Description	Type of Fault	Location of Fault	Material	Side	Severity (1-5)	Length Repair (m)
102	PRINCESS ST	122	VENICE ST	760	NEW YORK ST	Footpath	Total Length	Seal	Right	4	230
26	READING ST	6	NORTH ST	916	SEAL JOIN	Footpath	Hse No. 26	A/C	Right	3	1
26	READING ST	6	NORTH ST	916	SEAL JOIN	Footpath	Hse No. 40	A/C	Right	4	1
26	READING ST	6	NORTH ST	916	SEAL JOIN	Footpath	Cnr North St	A/C	Right	4	3
26	READING ST	6	NORTH ST	916	SEAL JOIN	Footpath	Cnr Reading + McMaster St	Seal	Right	5	13
26	READING ST	6	NORTH ST	916	SEAL JOIN	Footpath	Hse No. 62	Metal	Right	5	40
26	READING ST	6	NORTH ST	916	SEAL JOIN	Footpath	Hse No. 44	A/C	Right	5	1
26	READING ST	6	NORTH ST	916	SEAL JOIN	Footpath	Hse No. 23	A/C	Right	5	2
106	ROBERTS ST	5	DUBLIN ST	203	GREY ST	Footpath	Outside Park alongside pine trees	A/C	Left	4	3
107	SACKVILLE ST	8	NEW YORK ST	761	DUBLIN ST	Footpath	Cnr Venice + Sackville St	A/C	Right	4	1
276	SH2 FITZHERBERT ST (F)	118	BOUNDARY RD	2008	100 KPH SIGN	Footpath	Hse No. 148	Concrete	Left	5	3
276	SH2 FITZHERBERT ST (F)	118	BOUNDARY RD	2008	100 KPH SIGN	Footpath	Hse No. 138A	Concrete	Left	5	6
266	SH2 MASTERTON-WELLINGT	685	NORTH ST	2843	HOSPITAL RD	Footpath	Hse No. 19	Concrete	Left	3	5
266	SH2 MASTERTON-WELLINGT	685	NORTH ST	2843	HOSPITAL RD	Footpath	Hse No. 27A	Concrete	Left	3	1
266	SH2 MASTERTON-WELLINGT	685	NORTH ST	2843	HOSPITAL RD	Footpath	Outside Moon Flower	Concrete	Left	3	5
266	SH2 MASTERTON-WELLINGT	685	NORTH ST	2843	HOSPITAL RD	Footpath	Outside paint shop	Concrete	Left	4	3
266	SH2 MASTERTON-WELLINGT	685	NORTH ST	2843	HOSPITAL RD	Footpath	Hse No. 5	Concrete	Left	4	5
266	SH2 MASTERTON-WELLINGT	685	NORTH ST	2843	HOSPITAL RD	Footpath	Hse No. 93	Concrete	Left	4	10
266	SH2 MASTERTON-WELLINGT	685	NORTH ST	2843	HOSPITAL RD	Footpath	Outside Briarwood	Concrete	Left	4	2
266	SH2 MASTERTON-WELLINGT	685	NORTH ST	2843	HOSPITAL RD	Footpath	Opp Hastwell ST	Concrete	Left	4	7
266	SH2 MASTERTON-WELLINGT	685	NORTH ST	2843	HOSPITAL RD	Footpath	Hse No. 131	Concrete	Left	4	1
266	SH2 MASTERTON-WELLINGT	685	NORTH ST	2843	HOSPITAL RD	Footpath	Corner house (near #140)	Concrete	Left	4	5
266	SH2 MASTERTON-WELLINGT	685	NORTH ST	2843	HOSPITAL RD	Footpath	Hse No. 153	Concrete	Left	4	1
266	SH2 MASTERTON-WELLINGT	685	NORTH ST	2843	HOSPITAL RD	Footpath	Hse No. 119	Concrete	Left	5	8
266	SH2 MASTERTON-WELLINGT	685	NORTH ST	2843	HOSPITAL RD	Footpath	Hse No. 119	Concrete	Left	5	5
266	SH2 MASTERTON-WELLINGT	685	NORTH ST	2843	HOSPITAL RD	Footpath	Outside Church	Concrete	Left	5	8
266	SH2 MASTERTON-WELLINGT	685	NORTH ST	2843	HOSPITAL RD	Footpath	Hse No. 145	Concrete	Left	5	2
266	SH2 MASTERTON-WELLINGT	685	NORTH ST	2843	HOSPITAL RD	Footpath	Hse No. 157	Concrete	Left	5	8
266	SH2 MASTERTON-WELLINGT	685	NORTH ST	2843	HOSPITAL RD	Footpath	Outside Crighton Timber	Concrete	Left	5	6
266	SH2 MASTERTON-WELLINGT	685	NORTH ST	2843	HOSPITAL RD	Footpath	Outside Farmlands	Concrete	Left	5	6
266	SH2 MASTERTON-WELLINGT	685	NORTH ST	2843	HOSPITAL RD	Footpath	Outside Farmlands	Concrete	Left	5	10
266	SH2 MASTERTON-WELLINGT	685	NORTH ST	2958	50/100KPH SIGNS	Footpath	Hse No. 234	A/C	Right	3	3
266	SH2 MASTERTON-WELLINGT	685	NORTH ST	2958	50/100KPH SIGNS	Footpath	Hse No. 190	A/C	Right	3	1
266	SH2 MASTERTON-WELLINGT	685	NORTH ST	2958	50/100KPH SIGNS	Footpath	Hse No. 174	A/C	Right	3	35
266	SH2 MASTERTON-WELLINGT	685	NORTH ST	2958	50/100KPH SIGNS	Footpath	Hse No. 110 service cover	A/C	Right	3	2
266	SH2 MASTERTON-WELLINGT	685	NORTH ST	2958	50/100KPH SIGNS	Footpath	Outside Fire Station	A/C	Right	3	1
266	SH2 MASTERTON-WELLINGT	685	NORTH ST	2958	50/100KPH SIGNS	Footpath	Hse No. 44	A/C	Right	3	1
266	SH2 MASTERTON-WELLINGT	685	NORTH ST	2958	50/100KPH SIGNS	Footpath	ROW by Hse No. 64	A/C	Right	4	1
266	SH2 MASTERTON-WELLINGT	685	NORTH ST	2958	50/100KPH SIGNS	Footpath	Outside Hireworld	A/C	Right	5	12
266	SH2 MASTERTON-WELLINGT	685	NORTH ST	2958	50/100KPH SIGNS	Footpath	Hse No. 224	A/C	Right	5	1
266	SH2 MASTERTON-WELLINGT	685	NORTH ST	2958	50/100KPH SIGNS	Footpath	ROW entrance alongside VetCare	A/C	Right	5	5

SWDC FOOTPATH INVENTORY 2011 (FAULT ORDER SUMMARY)

Road ID	Road Name	Start (m)	Start Description	End (m)	End Description	Type of Fault	Location of Fault	Material	Side	Severity (1-5)	Length Repair (m)
266	SH2 MASTERTON-WELLINGT	685	NORTH ST	2958	50/100KPH SIGNS	Footpath	Hse No. 132	A/C	Right	5	3
266	SH2 MASTERTON-WELLINGT	685	NORTH ST	2958	50/100KPH SIGNS	Footpath	ROW Hse No. 132	A/C	Right	5	8
266	SH2 MASTERTON-WELLINGT	685	NORTH ST	2958	50/100KPH SIGNS	Footpath	Hse No. 6	A/C	Right	5	1
95	SH53 KITCHENER ST (M)	821	BROADWAY ST	1033	THE SQUARE	Footpath	Cnr Kitchener + Ohio St	Seal	Left	4	14
95	SH53 KITCHENER ST (M)	821	BROADWAY ST	1033	THE SQUARE	Footpath	Outside Oldfield Depot	Seal	Left	5	8
95	SH53 KITCHENER ST (M)	590	PRINCESS ST	1033	THE SQUARE	Footpath	Square to Ohio St	A/C	Right	3	15
95	SH53 KITCHENER ST (M)	590	PRINCESS ST	1033	THE SQUARE	Footpath	Around Bus Stop Sign	A/C	Right	3	1
95	SH53 KITCHENER ST (M)	590	PRINCESS ST	1033	THE SQUARE	Footpath	Mainly outside Service Station area	Concrete	Right	5	11
95	SH53 KITCHENER ST (M)	590	PRINCESS ST	1033	THE SQUARE	Footpath	Hse No. 23	Seal	Right	5	9
267	SH53 REVANS ST (F)	6	SH2	998	DONALD ST	Footpath	Section f/path between Panama+Princess	Seal	Right	5	7
267	SH53 REVANS ST (F)	6	SH2	998	DONALD ST	Footpath	By Railway Crossing	Concrete	Right	5	8
64	SKIPPAGE GR	8	WAKEFIELD ST	154	CDS	Footpath	Waite to Donald St	Metal	Right	5	108
109	STRASBOURG ST	7	PRINCESS ST	679	SACKVILLE ST	Footpath	Cnr Wakefield + Skippage	Concrete	Left	4	12
109	STRASBOURG ST	7	PRINCESS ST	679	SACKVILLE ST	Footpath	Hse No. 3	Seal	Left	3	1
109	STRASBOURG ST	7	PRINCESS ST	679	SACKVILLE ST	Footpath	Hse No. 13	Seal	Left	5	6
109	STRASBOURG ST	7	PRINCESS ST	679	SACKVILLE ST	Footpath	Hse No. 17	Seal	Left	5	17
109	STRASBOURG ST	7	PRINCESS ST	679	SACKVILLE ST	Footpath	Hse No. 27	Seal	Left	5	4
109	STRASBOURG ST	7	PRINCESS ST	679	SACKVILLE ST	Footpath	Hse No. 29a	Seal	Left	5	4
109	STRASBOURG ST	7	PRINCESS ST	679	SACKVILLE ST	Footpath	Hse No. 31	Seal	Left	5	6
109	STRASBOURG ST	7	PRINCESS ST	679	SACKVILLE ST	Footpath	Hse No. 33	Seal	Left	5	2
110	SUEZ ST	5	STRASBOURG ST	143	OXFORD ST	Footpath	Hse No. 35	Seal	Left	5	2
110	SUEZ ST	156	OXFORD ST	293	NAPLES ST	Footpath	Section between Strasbourge+Oxford St	Seal	Left	5	27
111	TEXAS ST	42	STRASBOURG ST	131	THE SQUARE	Footpath	Section between Oxford + Naples St	Seal	Left	5	70
108	THE SQUARE R/A	0	KITCHENER ST	452	KITCHENER ST	Footpath	Outside Town Hall	Seal	Left	3	7
108	THE SQUARE R/A	0	KITCHENER ST	452	KITCHENER ST	Footpath	Remote - Cambridge to Jellicoe St	A/C	Centre	5	8
108	THE SQUARE R/A	8	KITCHENER ST	452	KITCHENER ST	Footpath	Remote - Kitchener to Oxford	A/C	Centre	5	2
108	THE SQUARE R/A	8	KITCHENER ST	452	KITCHENER ST	Footpath	Outside BNZ cnr of Texas St	A/C	Left	4	4
108	THE SQUARE R/A	0	KITCHENER ST	320	KITCHENER ST	Footpath	Outside Pain + Kershaw Ltd	A/C	Left	4	3
67	TOTARA GR	59	CHURCHILL CRES	77	CDS	Footpath	The Square	A/C	Right	3	10
112	VENICE ST	7	PRINCESS ST	996	REGENT ST	Footpath	Hse No. 5	Concrete	Right	5	1
112	VENICE ST	7	PRINCESS ST	996	REGENT ST	Footpath	Cnr Princess + Venice St	Seal	Left	3	5
112	VENICE ST	7	PRINCESS ST	996	REGENT ST	Footpath	Full length of section	Seal	Left	4	205
112	VENICE ST	7	PRINCESS ST	996	REGENT ST	Footpath	Hse No. 35A	A/C	Left	5	5
112	VENICE ST	7	PRINCESS ST	996	REGENT ST	Footpath	Hse No. 41	A/C	Left	5	2
112	VENICE ST	532	JELICOE ST	569	SACKVILLE ST	Footpath	Hse No. 83A	A/C	Left	5	2
112	VENICE ST	242	BROADWAY ST	569	SACKVILLE ST	Footpath	Hse No. 38	A/C	Right	3	1
68	WAITE ST	139	FOX ST	642	HARDIE GR	Footpath	Outside PGG Wrightson	Seal	Right	5	1
68	WAITE ST	139	FOX ST	788	WOODWARD ST	Footpath	Hse No. 33	Concrete	Left	4	3
69	WAKEFIELD ST	12	SH2	666	HARRISON ST WEST	Footpath	Hse No. 55	Concrete	Right	5	2
69	WAKEFIELD ST	12	SH2	666	HARRISON ST WEST	Footpath	Cnr House	Concrete	Left	4	10
69	WAKEFIELD ST	12	SH2	666	HARRISON ST WEST	Footpath	Hse No. 9	Concrete	Left	4	4

SWDC FOOTPATH INVENTORY 2011 (FAULT ORDER SUMMARY)

Road ID	Road Name	Start (m)	Start Description	End (m)	End Description	Type of Fault	Location of Fault	Material	Side	Severity (1-5)	Length Repair (m)
69	WAKEFIELD ST	7	CARD CRES	448	BELL ST	Footpath	Hse No. 12	A/C	Right	5	3
70	WALLACE ST	7	SH2	259	SH53	Footpath	Hse No. 4	Seal	Left	5	6
70	WALLACE ST	7	SH2	260	SH53	Footpath	Hse No. 44	Concrete	Right	4	1
70	WALLACE ST	7	SH2	260	SH53	Footpath	Hse No. 40	Concrete	Right	4	2
70	WALLACE ST	7	SH2	260	SH53	Footpath	William Benton to SH53	Concrete	Right	4	55
74	WATT ST NO1	229	BELL ST	791	ROAD NARROWS	Footpath	Hse No. 55	A/C	Left	4	3
113	WELD ST	6	JELUCOE ST	225	FRENCH ST	Footpath	Hse No. 43	Seal	Right	5	4
31	WEST ST	493	HUMPHRIES ST	2132	NORTH ST	Footpath	Cnr Orchard + West St	Concrete	Left	5	3
31	WEST ST	494	SOUTH ST	2311	NORTH ST	Footpath	Hse No. 11	Concrete	Right	4	1
31	WEST ST	494	SOUTH ST	2311	NORTH ST	Footpath	Hse No. 19	Concrete	Right	4	1
31	WEST ST	494	SOUTH ST	2311	NORTH ST	Footpath	Hse No. 23	Concrete	Right	4	1
31	WEST ST	494	SOUTH ST	2311	NORTH ST	Footpath	Hse No. 63	Concrete	Right	4	3
31	WEST ST	494	SOUTH ST	2311	NORTH ST	Footpath	Vacant Section	Concrete	Right	4	3
31	WEST ST	494	SOUTH ST	2311	NORTH ST	Footpath	Outside Construction site	Concrete	Right	4	3
31	WEST ST	494	SOUTH ST	2311	NORTH ST	Footpath	Hse No. 129	Seal	Right	4	2
31	WEST ST	494	SOUTH ST	2311	NORTH ST	Footpath	Hse No. 139A	Seal	Right	5	4
31	WEST ST	494	SOUTH ST	2311	NORTH ST	Footpath	Hse No. 153	Seal	Right	5	8
31	WEST ST	494	SOUTH ST	2311	NORTH ST	Footpath	Hse No. 159	Seal	Right	5	5
31	WEST ST	494	SOUTH ST	2311	NORTH ST	Footpath	Cnr LHS	A/C	Left	4	12
32	WOOD ST	7	SH2	286	KEMPTON ST	Footpath	Hse No. 16	Concrete	Left	4	4
32	WOOD ST	7	SH2	286	KEMPTON ST	Footpath	Cnr Wood + West St	Concrete	Left	5	5
32	WOOD ST	7	SH2	286	KEMPTON ST	Footpath	Hse No. 8A	Concrete	Left	5	4
32	WOOD ST	7	SH2	103	WEST ST	Footpath	Cnr RHS	A/C	Right	4	3
119	WOODWARD ST NO 3	6	WAITE ST	171	WALLACE ST	Footpath	Hse No. 61	Concrete	Right	3	4
119	WOODWARD ST NO 3	6	WAITE ST	171	WALLACE ST	Footpath	Hse No. 79	Concrete	Right	5	1
119	WOODWARD ST NO 3	6	WAITE ST	171	WALLACE ST	Footpath	Hse No. 67	Concrete	Right	5	1
229 FOOTPATH FAULTS											3516

SWDC FOOTPATH INVENTORY 2011 (FAULT ORDER SUMMARY)

Road ID	Road Name	Start (m)	Start Description	End (m)	End Description	Type of Fault	Location of Fault	Material	Side	Severity (1-5)	Length Repair (m)
PRAM CROSSING FAULTS											
34	BELL ST	230	BIRDWOOD ST	309	JOHNSON ST	Pram Crossing	New Hse (long grass)	Concrete	Left	4	2
34	BELL ST	230	BIRDWOOD ST	309	JOHNSON ST	Pram Crossing	Cnr Hse Johnson + Bell St	Concrete	Left	5	1
36	BIRDWOOD ST	7 SH2		600	END	Pram Crossing	Cnr Bell + Birdwood	Concrete	Right	4	1
36	BIRDWOOD ST	7 SH2		600	END	Pram Crossing	Cnr Birdwood + Hanson St	Concrete	Right	5	1
36	BIRDWOOD ST	7 SH2		600	END	Pram Crossing	Cnr Birdwood + Hanson St	Concrete	Right	5	1
75	BROADWAY ST	8 NEW YORK ST		760	DUBLIN ST	Pram Crossing	Cnr Broadway + Strasbourg	A/C	Right	3	2
75	BROADWAY ST	8 NEW YORK ST		760	DUBLIN ST	Pram Crossing	Cnr Broadway + Cologne	A/C	Right	3	1
77	COLOGNE ST	6 REGENT ST		993	PRINCESS ST	Pram Crossing	Cnr Broadway + Cologne St	Seal	Left	3	1
77	COLOGNE ST	6 REGENT ST		12	SACKVILLE ST	Pram Crossing	Cnr Regent + Cologne St	A/C	Right	3	1
45	FOX ST	8 DONALD ST		1163	WALLACE ST	Pram Crossing	Outside Family Centre	A/C	Left	3	1
48	HARRISON ST WEST	6 JOHNSON ST		215	WAKEFIELD ST	Pram Crossing	Cnr Harrison + Wakefield	Concrete	Left	4	1
51	HICKSON ST	7 SH2		283	HAYWOOD ST	Pram Crossing	Cnr Harrison + Wakefield	Seal	Left	3	1
97	NAPLES ST	6 REGENT ST		994	PRINCESS ST	Pram Crossing	Cnr Hickson + Bell St	Seal	Left	3	1
104	REGENT ST	689 NEW YORK ST		1359	DUBLIN ST	Pram Crossing	Cnr Naples + Regent St	Concrete	Left	5	1
104	REGENT ST	689 NEW YORK ST		1359	DUBLIN ST	Pram Crossing	Cnr Regent + Strasbourg St	A/C	Right	3	1
276	SH2 FITZHERBERT ST (F)	118 BOUNDARY RD		2008	100 KPH SIGN	Pram Crossing	Cnr Regent + Cologne St	A/C	Right	3	1
276	SH2 FITZHERBERT ST (F)	118 BOUNDARY RD		2008	100 KPH SIGN	Pram Crossing	Cnr Wallace + Lyons St	A/C	Left	4	1
276	SH2 FITZHERBERT ST (F)	118 BOUNDARY RD		2008	100 KPH SIGN	Pram Crossing	Cnr SH + Lyons St	A/C	Left	4	1
266	SH2 MASTERTON-WELLINGT	685 NORTH ST		2843	HOSPITAL RD	Pram Crossing	Cnr SH + Daniel St	A/C	Left	5	7
69	WAKEFIELD ST	12 SH2		666	HARRISON ST WEST	Pram Crossing	Sump right on crossing	Concrete	Left	5	1
						Pram Crossing	Cnr Fox + Wakefield St	Concrete	Left	4	2
20 PRAM CROSSING FAULTS											29

SWDC FOOTPATH INVENTORY 2011 (FAULT ORDER SUMMARY)

Road ID	Road Name	Start (m)	Start Description	End (m)	End Description	Type of Fault	Location of Fault	Material	Side	Severity (1-5)	Length Repair (m)
SERVICE COVER FAULTS											
75	BROADWAY ST	391	KITCHENER ST	453	NAPLES ST	Service Cover	Outside Council Office	A/C	Left	3	1
39	CHURCHILL CRES	3	WATT ST	395	END	Service Cover	Hse No. 29	Concrete	Left	3	2
39	CHURCHILL CRES	3	WATT ST	395	END	Service Cover	Hse No. 37	Concrete	Left	3	1
39	CHURCHILL CRES	3	WATT ST	395	END	Service Cover	Hse No. 28	Concrete	Left	3	1
39	CHURCHILL CRES	3	WATT ST	395	END	Service Cover	Hse No. 26	Concrete	Left	3	1
9	EAST ST	11	HOSPITAL RD	2314	LOASBY PL	Service Cover	Hse No. 165	N/A	Right	3	1
14	JELlicoe ST	7	SH2	114	EAST ST	Service Cover	Cnr SH2 + Jellicoe St	N/A	Left	3	1
14	JELlicoe ST	7	SH2	745	BOUNDARY	Service Cover	Cnr Massey + Jellicoe St	Concrete	Right	4	1
92	JELlicoe ST (MARTINBORO)	10	THE SQUARE	983	FERRY RD	Service Cover	Cnr Grey + Jellicoe St	A/C	Right	5	1
15	KEMPTON ST	226	YULE GR	613	WOOD ST	Service Cover	Hse No. 59A	Concrete	Right	4	2
55	KOWHAI GR	63	CHURCHILL CRES	77	CDS	Service Cover	Hse No. 2	Concrete	Right	3	2
98	NEW YORK ST	7	PRINCESS ST	994	REGENCY ST	Service Cover	Hse No. 10	A/C	Right	3	1
98	NEW YORK ST	7	PRINCESS ST	994	REGENCY ST	Service Cover	Hse No. 50	A/C	Right	3	1
98	NEW YORK ST	7	PRINCESS ST	994	REGENCY ST	Service Cover	Hse No. 70	A/C	Right	3	1
26	READING ST	6	NORTH ST	916	SEAL JOIN	Service Cover	Hse No. 18	A/C	Right	3	1
26	READING ST	6	NORTH ST	916	SEAL JOIN	Service Cover	Hse No. 10	A/C	Right	3	1
26	READING ST	6	NORTH ST	916	SEAL JOIN	Service Cover	Hse No. 6	A/C	Right	3	1
04	REGENCY ST	689	NEW YORK ST	1359	DUBLIN ST	Service Cover	Hse No. 107	A/C	Right	4	1
266	SH2 MASTERTON-WELLINGT	685	NORTH ST	2843	HOSPITAL RD	Service Cover	Hse No. 25	Concrete	Left	3	1
266	SH2 MASTERTON-WELLINGT	685	NORTH ST	2843	HOSPITAL RD	Service Cover	Outside Arbor Motel	Concrete	Left	3	1
266	SH2 MASTERTON-WELLINGT	685	NORTH ST	2843	HOSPITAL RD	Service Cover	Hse No. 37	Concrete	Left	3	1
266	SH2 MASTERTON-WELLINGT	685	NORTH ST	2843	HOSPITAL RD	Service Cover	Outside Swan	Concrete	Left	3	1
266	SH2 MASTERTON-WELLINGT	685	NORTH ST	2843	HOSPITAL RD	Service Cover	Near Public Car park	Concrete	Left	3	1
266	SH2 MASTERTON-WELLINGT	685	NORTH ST	2843	HOSPITAL RD	Service Cover	Outside NZ Birds Gallery	Concrete	Left	4	2
266	SH2 MASTERTON-WELLINGT	685	NORTH ST	2843	HOSPITAL RD	Service Cover	Hse No. 159	Concrete	Left	4	1
266	SH2 MASTERTON-WELLINGT	685	NORTH ST	2843	HOSPITAL RD	Service Cover	Outside Greytown Community Hall	Concrete	Left	5	5
266	SH2 MASTERTON-WELLINGT	685	NORTH ST	2958	50/100KPH SIGNS	Service Cover	Hse No. 92	A/C	Right	3	2
266	SH2 MASTERTON-WELLINGT	685	NORTH ST	2958	50/100KPH SIGNS	Service Cover	Hse No. 72	A/C	Right	3	1
95	SH53 KITCHENER ST (M)	821	BROADWAY ST	1033	THE SQUARE	Service Cover	Outside It's Quite Cool	A/C	Left	3	1
74	WATT ST NO1	229	BELL ST	791	ROAD NARROWS	Service Cover	Hse No. 63	A/C	Left	4	1
31	WEST ST	494	SOUTH ST	2311	NORTH ST	Service Cover	Hse No. 143	Seal	Right	4	4
31 SERVICE COVER FAULTS											43

SWDC FOOTPATH INVENTORY 2011 (FAULT ORDER SUMMARY)

Road ID	Road Name	Start (m)	Start Description	End (m)	End Description	Type of Fault	Location of Fault	Material	Side	Severity (1-5)	Length Repair (m)
TOBY FAULTS											
9	EAST ST	11	HOSPITAL RD	2314	LOASBY PL	Toby	Hse No. 7	PVC	Right	2	1
283	AWHINA DRIVE	4	HUMPHRIES STREET	84	CDS	Toby	Low toby outside #8	Concrete	Right	3	1
36	BIRDWOOD ST	7	SH2	600	END	Toby	Cnr Bell + Birdwood	Concrete	Right	4	1
75	BROADWAY ST	391	KITCHENER ST	453	NAPLES ST	Toby	Outside Council Office	A/C	Left	3	1
76	CAMBRIDGE RD	11	THE SQUARE	333	NEW YORK ST	Toby	Cnr Square + Cambridge St	A/C	Left	4	1
39	CHURCHILL CRES	3	WATT ST	395	END	Toby	Hse No. 20	Concrete	Left	5	1
77	COLOGNE ST	6	RECENT ST	993	PRINCESS ST	Toby	Hse No. 64	A/C	Left	3	1
78	CORK ST	5	NAPLES ST	294	STRASBOURG ST	Toby	Hse No. 12	A/C	Right	3	1
78	CORK ST	5	NAPLES ST	294	STRASBOURG ST	Toby	Hse No. 8	A/C	Right	3	1
85	DUBLIN ST	0	PRINCESS ST	520	JELICOE ST	Toby	Hse No. 10	A/C	Right	3	1
9	EAST ST	11	HOSPITAL RD	2314	LOASBY PL	Toby	Cnr Dublin + Roberts St	Concrete	Right	5	2
9	EAST ST	11	HOSPITAL RD	2314	LOASBY PL	Toby	Hse No. 109	PVC	Right	5	1
9	EAST ST	11	HOSPITAL RD	2314	LOASBY PL	Toby	Hse No. 105	PVC	Right	5	1
45	FOX ST	8	DONALD ST	1163	WALLACE ST	Toby	Hse No. 113	PVC	Right	5	1
45	FOX ST	8	DONALD ST	1163	WALLACE ST	Toby	Outside Family Centre	A/C	Left	3	1
45	FOX ST	8	DONALD ST	1163	WALLACE ST	Toby	Hse No. 30	A/C	Left	4	1
45	FOX ST	8	DONALD ST	1163	WALLACE ST	Toby	Hse No. 22	A/C	Left	4	1
45	FOX ST	8	DONALD ST	1163	WALLACE ST	Toby	Hse No. 100	Seal	Left	4	1
45	FOX ST	8	DONALD ST	1163	WALLACE ST	Toby	Hse No. 98	Seal	Left	4	1
45	FOX ST	8	DONALD ST	1163	WALLACE ST	Toby	Hse No. 96	A/C	Left	4	1
45	FOX ST	8	DONALD ST	1163	WALLACE ST	Toby	Vacant Section	A/C	Left	4	1
45	FOX ST	8	DONALD ST	1163	WALLACE ST	Toby	Hse No. 84	A/C	Left	5	1
45	FOX ST	83	WAITE ST	1183	WATT ST	Toby	Cnr Fox + Wakefield St	A/C	Right	4	1
45	FOX ST	83	WAITE ST	1183	WATT ST	Toby	Outside RSA	A/C	Right	4	3
46	HARDIE GR	6	WAITE ST	175	CDS	Toby	Hse No. 18	Concrete	Left	4	1
48	HARRISON ST WEST	6	JOHNSON ST	215	WAKEFIELD ST	Toby	Outside Hotel	A/C	Left	3	1
50	HAYWOOD ST	5	HICKSON ST	212	BIRDWOOD ST	Toby	Hse No. 7	Seal	Left	3	1
50	HAYWOOD ST	5	HICKSON ST	212	BIRDWOOD ST	Toby	Hse No. 8	Seal	Left	4	1
50	HAYWOOD ST	5	HICKSON ST	212	BIRDWOOD ST	Toby	Hse No. 5	Seal	Left	4	1
50	HAYWOOD ST	5	HICKSON ST	212	BIRDWOOD ST	Toby	Hse No. 4	Seal	Left	4	1
50	HAYWOOD ST	5	HICKSON ST	212	BIRDWOOD ST	Toby	Hse No. 1	Seal	Left	4	1
50	HAYWOOD ST	5	HICKSON ST	212	BIRDWOOD ST	Toby	Hse No. 14	Seal	Left	4	1
51	HICKSON ST	7	SH2	283	HAYWOOD ST	Toby	Hse No. 15	Seal	Left	5	2
51	HICKSON ST	7	SH2	283	HAYWOOD ST	Toby	Cnr Hickson + Bell St	Seal	Left	4	1
51	HICKSON ST	7	SH2	167	BELL ST	Toby	Hse No. 6	Seal	Left	4	1
51	HICKSON ST	7	SH2	167	BELL ST	Toby	Hse No. 12	Seal	Right	3	1
14	HUMPHRIES ST	7	SH2	358	WEST ST	Toby	Hse No. 12A	Seal	Right	3	1
92	JELICOE ST (MARTINBORO)	10	THE SQUARE	330	DUBLIN ST	Toby	Outside That's Entertainment	Concrete	Left	4	3
52	JOHNSON ST	7	FOX ST	441	HARRISON ST WEST	Toby	Hse No. 7	A/C	Left	3	1
								A/C	Left	3	2

SWDC FOOTPATH INVENTORY 2011 (FAULT ORDER SUMMARY)

Road ID	Road Name	Start (m)	Start Description	End (m)	End Description	Type of Fault	Location of Fault	Material	Side	Severity (1-5)	Length Repair (m)
16	KURATAWHITI ST	7 SH2		951	MOLE ST	Toby	Hse No. 24	A/C	Left	3	1
18	MCMASTER ST	7 SH2		750	END	Toby	Cnr McMaster + East St	N/A	Right	3	1
59	MOORE ST	12 SH2		320	BRIDGE ABUTMENT	Toby	Hse No. 23	A/C	Left	4	1
97	NAPLES ST	6 REGENT ST		994	PRINCESS ST	Toby	Hse No. 56	A/C	Left	3	1
97	NAPLES ST	6 REGENT ST		994	PRINCESS ST	Toby	Cnr Naples + Jellicoe	A/C	Left	5	1
98	NEW YORK ST	7 PRINCESS ST		994	REGENT ST	Toby	Hse No. 6	A/C	Right	3	1
98	NEW YORK ST	7 PRINCESS ST		994	REGENT ST	Toby	Hse No. 28	A/C	Right	3	1
98	NEW YORK ST	7 PRINCESS ST		994	REGENT ST	Toby	Hse No. 30	A/C	Right	3	1
98	NEW YORK ST	7 PRINCESS ST		994	REGENT ST	Toby	Hse No. 48	A/C	Right	3	1
101	PANAMA ST	6 NAPLES ST		295	STRASBOURG ST	Toby	Hse No. 20	Seal	Right	4	1
26	READING ST	6 NORTH ST		916	SEAL JOIN	Toby	Hse No. 28	A/C	Right	4	1
63	REVANS ST	5 WAKEFIELD ST		216	WATT ST	Toby	Hse No. 25	Concrete	Right	3	1
276	SH2 FITZHERBERT ST (F)	118 BOUNDARY RD		2008	100 KPH SIGN	Toby	Hse No. 108	Concrete	Left	3	1
276	SH2 FITZHERBERT ST (F)	118 BOUNDARY RD		2008	100 KPH SIGN	Toby	Hse No. 54	A/C	Left	5	1
266	SH2 MASTERTON-WELLINGT	685 NORTH ST		2843	HOSPITAL RD	Toby	Hse No. 41	Concrete	Left	3	1
266	SH2 MASTERTON-WELLINGT	685 NORTH ST		2843	HOSPITAL RD	Toby	Outside Crighton Timber	Concrete	Left	3	1
266	SH2 MASTERTON-WELLINGT	685 NORTH ST		2843	HOSPITAL RD	Toby	Outside Butcher Shop	Concrete	Left	5	1
266	SH2 MASTERTON-WELLINGT	685 NORTH ST		2958	50/100KPH SIGNS	Toby	Hse No. 32	A/C	Right	3	2
266	SH2 MASTERTON-WELLINGT	685 NORTH ST		2958	50/100KPH SIGNS	Toby	Hse No. 20	A/C	Right	3	1
266	SH2 MASTERTON-WELLINGT	685 NORTH ST		2958	50/100KPH SIGNS	Toby	Hse No. 18	A/C	Right	3	1
266	SH2 MASTERTON-WELLINGT	685 NORTH ST		2958	50/100KPH SIGNS	Toby	Hse No. 2	A/C	Right	3	1
95	SH53 KITCHENER ST (M)	821 BROADWAY ST		1033	THE SQUARE	Toby	Hse No. 12	Seal	Left	3	1
95	SH53 KITCHENER ST (M)	821 BROADWAY ST		1033	THE SQUARE	Toby	Outside Village Café	A/C	Left	3	1
95	SH53 KITCHENER ST (M)	590 PRINCESS ST		1033	THE SQUARE	Toby	Outside Service Station	Concrete	Right	5	1
267	SH53 REVANS ST (F)	6 SH2		998	DONALD ST	Toby	Hse No. 78	Seal	Right	4	1
64	SKIPPAGE GR	8 WAKEFIELD ST		154	CDS	Toby	Hse No. 1	Concrete	Left	3	1
67	TOTARA GR	59 CHURCHILL CRES		77	CDS	Toby	Hse No. 5	Concrete	Right	5	2
112	VENICE ST	7 PRINCESS ST		996	REGENT ST	Toby	Hse No. 79B	Concrete	Left	3	1
112	VENICE ST	7 PRINCESS ST		996	REGENT ST	Toby	Cnr Jellicoe + Venice St	A/C	Left	4	1
112	VENICE ST	7 PRINCESS ST		996	REGENT ST	Toby	Hse No. 57	A/C	Left	4	1
112	VENICE ST	7 PRINCESS ST		996	REGENT ST	Toby	Hse No. 61	A/C	Left	4	1
112	VENICE ST	532 JELICOE ST		569	SACKVILLE ST	Toby	Hse No. 42	A/C	Right	5	1
69	WAKEFIELD ST	12 SH2		666	HARRISON ST WEST	Toby	Hse No. 27	Concrete	Left	3	1
69	WAKEFIELD ST	7 CARD CRES		448	BELL ST	Toby	Hse No. 12	A/C	Right	4	1
113	WELD ST	6 JELICOE ST		225	FRENCH ST	Toby	Hse No. 41	Seal	Right	3	1
32	WOOD ST	7 SH2		286	KEMPTON ST	Toby	Hse No. 2	A/C	Left	3	1
32	WOOD ST	7 SH2		286	KEMPTON ST	Toby	Hse No. 4	A/C	Left	5	1
76 TOBY FAULTS											82

SWDC FOOTPATH INVENTORY 2011 (FAULT ORDER SUMMARY)

Road ID	Road Name	Start (m)	Start Description	End (m)	End Description	Type of Fault	Location of Fault	Material	Side	Severity (1-5)	Length Repair (m)
16	KURATAWHITI ST	7 SH2		951	MOLE ST	Toby	Hse No. 24	A/C	Left	3	1
18	MCMMASTER ST	7 SH2		750	END	Toby	Cnr McMaster + East St	N/A	Right	3	1
59	MOORE ST	12 SH2		320	BRIDGE ABUTMENT	Toby	Hse No. 23	A/C	Left	4	1
97	NAPLES ST	6 REGENT ST		994	PRINCESS ST	Toby	Hse No. 56	A/C	Left	3	1
97	NAPLES ST	6 REGENT ST		994	PRINCESS ST	Toby	Cnr Naples + Jellicoe	A/C	Left	5	1
98	NEW YORK ST	7 PRINCESS ST		994	REGENT ST	Toby	Hse No. 6	A/C	Right	3	1
98	NEW YORK ST	7 PRINCESS ST		994	REGENT ST	Toby	Hse No. 28	A/C	Right	3	1
98	NEW YORK ST	7 PRINCESS ST		994	REGENT ST	Toby	Hse No. 30	A/C	Right	3	1
98	NEW YORK ST	7 PRINCESS ST		994	REGENT ST	Toby	Hse No. 48	A/C	Right	3	1
101	PANAMA ST	6 NAPLES ST		295	STRASBOURG ST	Toby	Hse No. 20	Seal	Right	4	1
26	READING ST	6 NORTH ST		916	SEAL JOIN	Toby	Hse No. 28	A/C	Right	4	1
63	REVANS ST	5 WAKEFIELD ST		216	WATT ST	Toby	Hse No. 25	Concrete	Right	3	1
276	SH2 FITZHERBERT ST (F)	118 BOUNDARY RD		2008	100 KPH SIGN	Toby	Hse No. 108	Concrete	Left	3	1
276	SH2 FITZHERBERT ST (F)	118 BOUNDARY RD		2008	100 KPH SIGN	Toby	Hse No. 54	A/C	Left	5	1
266	SH2 MASTERTON-WELLINGT	685 NORTH ST		2843	HOSPITAL RD	Toby	Hse No. 41	Concrete	Left	3	1
266	SH2 MASTERTON-WELLINGT	685 NORTH ST		2843	HOSPITAL RD	Toby	Outside Crighton Timber	Concrete	Left	3	1
266	SH2 MASTERTON-WELLINGT	685 NORTH ST		2843	HOSPITAL RD	Toby	Outside Butcher Shop	Concrete	Left	5	1
266	SH2 MASTERTON-WELLINGT	685 NORTH ST		2958	50/100KPH SIGNS	Toby	Hse No. 32	A/C	Right	3	2
266	SH2 MASTERTON-WELLINGT	685 NORTH ST		2958	50/100KPH SIGNS	Toby	Hse No. 20	A/C	Right	3	1
266	SH2 MASTERTON-WELLINGT	685 NORTH ST		2958	50/100KPH SIGNS	Toby	Hse No. 18	A/C	Right	3	1
266	SH2 MASTERTON-WELLINGT	685 NORTH ST		2958	50/100KPH SIGNS	Toby	Hse No. 2	A/C	Right	3	1
95	SH53 KITCHENER ST (M)	821 BROADWAY ST		1033	THE SQUARE	Toby	Hse No. 12	Seal	Left	3	1
95	SH53 KITCHENER ST (M)	821 BROADWAY ST		1033	THE SQUARE	Toby	Outside Village Café	A/C	Left	3	1
95	SH53 KITCHENER ST (M)	590 PRINCESS ST		1033	THE SQUARE	Toby	Outside Service Station	Concrete	Right	5	1
267	SH53 REVANS ST (F)	6 SH2		998	DONALD ST	Toby	Hse No. 78	Seal	Right	4	1
64	SKIPPAGE GR	8 WAKEFIELD ST		154	CDS	Toby	Hse No. 1	Concrete	Left	3	1
67	TOTARA GR	59 CHURCHILL CRES		77	CDS	Toby	Hse No. 5	Concrete	Right	5	2
112	VENICE ST	7 PRINCESS ST		996	REGENT ST	Toby	Hse No. 79B	Concrete	Left	3	1
112	VENICE ST	7 PRINCESS ST		996	REGENT ST	Toby	Cnr Jellicoe + Venice St	A/C	Left	4	1
112	VENICE ST	7 PRINCESS ST		996	REGENT ST	Toby	Hse No. 57	A/C	Left	4	1
112	VENICE ST	7 PRINCESS ST		996	REGENT ST	Toby	Hse No. 61	A/C	Left	4	1
112	VENICE ST	532 JELICOE ST		569	SACKVILLE ST	Toby	Hse No. 42	A/C	Right	5	1
69	WAKEFIELD ST	12 SH2		666	HARRISON ST WEST	Toby	Hse No. 27	Concrete	Left	3	1
69	WAKEFIELD ST	7 CARD CRES		448	BELL ST	Toby	Hse No. 12	A/C	Right	4	1
113	WELD ST	6 JELICOE ST		225	FRENCH ST	Toby	Hse No. 41	Seal	Right	3	1
32	WOOD ST	7 SH2		286	KEMPTON ST	Toby	Hse No. 2	A/C	Left	3	1
32	WOOD ST	7 SH2		286	KEMPTON ST	Toby	Hse No. 4	A/C	Left	5	1
76 TOBY FAULTS											82

SWDC FOOTPATH INVENTORY 2011 (FAULT ORDER SUMMARY)

Road ID	Road Name	Start (m)	Start Description	End (m)	End Description	Type of Fault	Location of Fault	Material	Side	Severity (1-5)	Length Repair (m)
TREE + ROOT FAULTS											
36	BIRDWOOD ST	54	FOX ST	262	BELL ST	Trees	Hse No. 3A	A/C	Left	3	12
36	BIRDWOOD ST	7	SH2	600	END	Trees	Cnr Haywood + Birdwood	Concrete	Right	5	44
75	BROADWAY ST	8	NEW YORK ST	760	DUBLIN ST	Trees	Between 239-376m	A/C	Right	3	28
8	CLARA ANNE GR	6	READING ST	60	CDS	Trees + Roots	Cnr house RHS	Trees	Right	4	32
85	DUBLIN ST	186	ROBERTS ST	775	SACKVILLE ST	Trees	Hse No. 37	A/C	Left	5	4
45	FOX ST	83	WAITE ST	1183	WATT ST	Tree Roots	Hse No. 3	Trees	Right	4	3
10	HASTWELL ST	7	SH2	109	WEST ST	Trees	Outside Hall	A/C	Right	3	12
16	KURATAWHITI ST	7	SH2	951	MOLE ST	Tree Roots	Hse No. 12A	A/C	Left	5	4
57	LYON ST	7	SH2	610	WOODWARD ST	Trees	Cnr Revans + Lyon St	Concrete	Left	4	34
98	NEW YORK ST	7	PRINCESS ST	994	REGENT ST	Trees	Hse No. 60	A/C	Right	3	6
98	NEW YORK ST	7	PRINCESS ST	994	REGENT ST	Trees	Hse No. 54	A/C	Right	5	5
25	PAPAWAI RD	126	EAST ST	263	50/100 KPH SIGN	Trees + Roots	Full length	Trees	Right	5	15
26	READING ST	6	NORTH ST	916	SEAL JOIN	Trees	Hse No. 42	A/C	Right	3	10
276	SH2 FITZHERBERT ST (F)	118	BOUNDARY RD	2008	100 KPH SIGN	Trees	Hse No. 112	Concrete	Left	3	8
276	SH2 FITZHERBERT ST (F)	118	BOUNDARY RD	2008	100 KPH SIGN	Trees	Cnr SH + Ludlam St	A/C	Left	3	40
276	SH2 FITZHERBERT ST (F)	118	BOUNDARY RD	2008	100 KPH SIGN	Trees	Hse No. 136	Concrete	Left	4	12
276	SH2 FITZHERBERT ST (F)	118	BOUNDARY RD	2008	100 KPH SIGN	Trees	Hse No. 134	Concrete	Left	4	19
276	SH2 FITZHERBERT ST (F)	118	BOUNDARY RD	2008	100 KPH SIGN	Trees	Cnr SH2 + Boundary Rd	Concrete	Left	5	18
266	SH2 MASTERTON-WELLINGT	685	NORTH ST	2843	HOSPITAL RD	Tree	Outside paint shop	Concrete	Left	3	12
266	SH2 MASTERTON-WELLINGT	685	NORTH ST	2843	HOSPITAL RD	Trees	Hse No. 143	Concrete	Left	4	12
266	SH2 MASTERTON-WELLINGT	685	NORTH ST	2958	50/100KPH SIGNS	Trees	Outside Park	A/C	Right	3	6
266	SH2 MASTERTON-WELLINGT	685	NORTH ST	2958	50/100KPH SIGNS	Trees	Hse No. 236	A/C	Right	3	12
95	SH53 KITCHENER ST (M)	590	PRINCESS ST	1033	THE SQUARE	Trees	Section between Panama+Princess	Seal	Right	5	40
109	STRASBOURG ST	7	PRINCESS ST	679	SACKVILLE ST	Tree	Hse No. 7	Seal	Left	3	8
69	WAKEFIELD ST	12	SH2	666	HARRISON ST WEST	Trees	Cnr House	Concrete	Left	3	25
69	WAKEFIELD ST	12	SH2	666	HARRISON ST WEST	Trees	Hse No. 13	Concrete	Left	3	2
69	WAKEFIELD ST	12	SH2	666	HARRISON ST WEST	Trees	Cnr Skippage + Wakefield	Concrete	Left	3	8
69	WAKEFIELD ST	12	SH2	666	HARRISON ST WEST	Trees	Hse No. 27	Concrete	Left	3	14
69	WAKEFIELD ST	12	SH2	666	HARRISON ST WEST	Trees	Hse No. 25	Concrete	Left	3	25
69	WAKEFIELD ST	12	SH2	666	HARRISON ST WEST	Trees	Hse No. 51	Concrete	Left	3	12
69	WAKEFIELD ST	12	SH2	666	HARRISON ST WEST	Trees	Hse No. 22	Concrete	Left	3	14
113	WELD ST	6	JELICOE ST	225	FRENCH ST	Trees	Hse No. 53	Seal	Right	5	8
31	WEST ST	493	HUMPHRIES ST	2132	NORTH ST	Trees	Cnr Kuratawhiti + West	Trees	Left	4	33
31	WEST ST	493	HUMPHRIES ST	2132	NORTH ST	Trees	Hse No. 176	Trees	Left	5	6
34 TREES + ROOT FAULTS											543

SWDC FOOTPATH INVENTORY 2011 (FAULT ORDER SUMMARY)

Road ID	Road Name	Start (m)	Start Description	End (m)	End Description	Type of Fault	Location of Fault	Material	Side	Severity (1-5)	Length Repair (m)
VEGETATION FAULTS											
34	BELL ST	230	BIRDWOOD ST	309	JOHNSON ST	Vegetation	Cnr Hse No. 11	Concrete	Left	3	12
34	BELL ST	230	BIRDWOOD ST	309	JOHNSON ST	Vegetation	Cnr Wakefield + Bell St	Concrete	Left	3	3
35	BETHUNE ST	6	SH2	428	WOODWARD ST	Vegetation	Hse No. 3	Concrete	Left	3	16
75	BROADWAY ST	8	NEW YORK ST	760	DUBLIN ST	Vegetation	Hse No. 15	A/C	Right	3	3
75	BROADWAY ST	8	NEW YORK ST	760	DUBLIN ST	Vegetation	Cnr Kitchener + Broadway	A/C	Right	3	28
77	COLOGNE ST	6	REGENT ST	993	PRINCESS ST	Vegetation	Hse No. 53	A/C	Left	3	10
77	COLOGNE ST	6	REGENT ST	993	PRINCESS ST	Vegetation	Cnr Cologne + Cambridge St	Seal	Left	3	8
77	COLOGNE ST	6	REGENT ST	993	PRINCESS ST	Vegetation	Hse No. 36	Seal	Left	3	3
78	CORK ST	5	NAPLES ST	294	STRASBOURG ST	Vegetation	Cnr Naples + Cork St	A/C	Right	3	20
9	EAST ST	11	HOSPITAL RD	2314	LOASBY PL	Vegetation	Hse No. 161	Trees	Right	3	9
9	EAST ST	11	HOSPITAL RD	2314	LOASBY PL	Vegetation	Cnr Hospital + Loasby Pl	N/A	Right	3	2
87	FERRY RD	7	JELICOE ST	320	SEAL JOIN	Vegetation	Cnr hse Ferry + French St	Concrete	Right	4	15
87	FERRY RD	7	JELICOE ST	320	SEAL JOIN	Vegetation	Cnr hse Ferry + French St	Concrete	Right	4	39
47	HARRISON ST EAST	621	HICKSON ST	786	BIRDWOOD ST	Vegetation	Hse No. 70	Concrete	Left	3	15
47	HARRISON ST EAST	621	HICKSON ST	786	BIRDWOOD ST	Vegetation	Hse No. 88	Concrete	Left	3	15
97	NAPLES ST	6	REGENT ST	994	PRINCESS ST	Vegetation	Hse No. 84	Concrete	Left	3	8
97	NAPLES ST	6	REGENT ST	994	PRINCESS ST	Vegetation	Hse No. 12	Seal	Left	3	18
97	NAPLES ST	6	REGENT ST	994	PRINCESS ST	Vegetation	Hse No. 36	A/C	Right	3	8
98	NEW YORK ST	7	PRINCESS ST	994	REGENT ST	Vegetation	Hse No. 40	A/C	Right	3	9
98	NEW YORK ST	7	PRINCESS ST	994	REGENT ST	Vegetation	Cnr Cambridge + New York St	A/C	Right	3	20
104	REGENT ST	689	NEW YORK ST	1359	DUBLIN ST	Vegetation	Hse No. 93	A/C	Right	3	12
107	SACKVILLE ST	8	NEW YORK ST	761	DUBLIN ST	Vegetation	Hse No. 11	A/C	Right	3	5
107	SACKVILLE ST	8	NEW YORK ST	761	DUBLIN ST	Vegetation	Cnr Venice + Sackville St	A/C	Right	3	8
266	SH2 MASTERTON-WELLINGT	685	NORTH ST	2843	HOSPITAL RD	Vegetation	Outside RealEstate Information	Concrete	Left	3	3
266	SH2 MASTERTON-WELLINGT	685	NORTH ST	2843	HOSPITAL RD	Vegetation	Hse No. 129	Concrete	Left	3	30
266	SH2 MASTERTON-WELLINGT	685	NORTH ST	2843	HOSPITAL RD	Vegetation	Hse No. 167	Concrete	Left	3	15
266	SH2 MASTERTON-WELLINGT	685	NORTH ST	2843	HOSPITAL RD	Vegetation	Hse No. 179	Concrete	Left	3	14
266	SH2 MASTERTON-WELLINGT	685	NORTH ST	2843	HOSPITAL RD	Vegetation	Hse No. 13	Concrete	Left	4	14
266	SH2 MASTERTON-WELLINGT	685	NORTH ST	2958	50/100KPH SIGNS	Vegetation	Outside architects house	A/C	Right	3	25
109	STRASBOURG ST	7	PRINCESS ST	679	SACKVILLE ST	Vegetation	Hse No. 23	Seal	Left	3	8
109	STRASBOURG ST	675	CORK ST	783	SACKVILLE ST	Vegetation	Cnr Strasbourg + Sackville St #62	A/C	Right	4	13
31 VEGETATION FAULTS											408

SOUTH WAIRARAPA DISTRICT COUNCIL FOOTPATH RATING 2011 - FINAL COMMENTS

Road ID	Road Name	Start	End	Side	Settlement	Bumps	Depressions	Cracked	Scabbing	Patches	Potholes	O/Hang Veg	Svce Cov	Tobys	% Defect	Severity 1-5	Pram Cross	FINAL COMMENTS
77	COLOGNE ST	513	759	Left	14	3	0	0	5	0	0	11	0	0	14	5	1	POOR CONDITION
77	COLOGNE ST	6	12	Right	0	0	0	0	0	0	0	0	0	0	17	3	1	MATERIAL A/C
85	DUBLIN ST	340	522	Left	0	0	0	0	0	0	0	4	0	0	2	4	0	POSTN KERB
85	DUBLIN ST	236	332	Right	0	0	0	0	0	0	0	0	0	0	0	0	0	DELETE?
9	EAST ST	125	143	Left	0	0	0	0	0	0	0	0	0	0	0	0	0	MATERIAL A/C
45	FOX ST	83	291	Left	0	0	0	0	0	2	0	0	0	6	4	4	0	POOR CONDITION
45	FOX ST	717	726	Right	0	0	0	0	0	0	0	0	0	0	0	0	0	MATERIAL A/C; LOOSE METAL ON C/WAY
10	HASTWELL ST	7	109	Left	0	0	0	3	0	0	0	0	0	0	3	3	0	CONSTRUCTION AREA
50	HAYWOOD ST	5	212	Left	10	0	0	1	4	0	0	0	0	4	9	5	0	POOR CONDITION
50	HAYWOOD ST	5	212	Right	21	0	0	0	0	0	0	0	0	1	11	5	0	POOR CONDITION
92	JELlicoe ST (MARTINBOROU	507	542	Right	0	0	0	0	0	0	0	0	0	0	0	0	0	INVENTORY REQD
92	JELlicoe ST (MARTINBOROU	550	646	Right	0	0	0	0	0	0	0	0	1	0	1	5	0	INVENTORY REQD
92	JELlicoe ST (MARTINBOROU	762	789	Right	0	0	0	0	0	0	0	0	0	0	0	0	0	INVENTORY REQD
57	LYON ST	609	823	Unknc	0	0	0	0	0	0	0	0	0	0	0	0	0	INV REQD START & END NAME?
18	MCMaster ST	7	114	Left	0	2	0	6	0	0	0	3	0	0	10	4	0	FOUR VEH CROSSINGS RHS - POOR CONSTRUCTION
97	NAPLES ST	336	477	Left	2	3	0	0	0	0	0	0	0	1	4	1	0	LOOSE METAL ON F/PATH CNR NAPLE + JELlicoe ST
97	NAPLES ST	490	647	Left	0	0	0	0	30	0	0	0	0	0	19	4	0	POOR CONDITION

SOUTH WAIRARAPA DISTRICT COUNCIL FOOTPATH RATING 2011 - FINAL COMMENTS

Road ID	Road Name	Start	End	Side	Settlement	Bumps	Depressions	Cracked	Scabbing	Patches	Potholes	O/Hang Veg	Svce Cov	Tobys	% Defect	Severly 1-5	Pram Cross	FINAL COMMENTS
97	NAPLES ST	770	883	Left	2	2	0	0	3	0	0	0	0	0	6	4	0	POOR CONDITION
97	NAPLES ST	647	760	Left	0	0	0	0	0	0	0	0	0	0	0	0	0	POOR SURFACE
100	OXFORD ST	11	59	Right	0	0	0	0	2	0	0	0	0	0	4	3	0	POOR CONDITION
104	REGENT ST	1069	1211	Left	0	1	0	0	0	0	1	0	0	0	1	3	0	POOR CONDITION
104	REGENT ST	1906	2300	Right	0	0	0	0	0	0	0	0	0	0	0	0	0	INVENTORY REQD
106	ROBERTS ST	5	203	Left	0	3	0	0	0	0	0	0	0	0	2	4	0	MATERIAL A/C
107	SACKVILLE ST	59	113	Right	0	0	0	0	0	0	0	0	0	0	0	0	0	MATERIAL A/C
276	SH2 FITZHERBERT ST (F)	1042	1267	Right														REPAIRS REQD BOUNDARY OF F/PATH
266	SH2 MASTERTON-WELLINGTON	2524	2843	Left	16	3	0	0	14	0	0	0	0	1	11	5	0	POOR CONDITION
266	SH2 MASTERTON-WELLINGTON	1906	2512	Left	14	8	0	0	0	0	0	23	1	0	8	4	1	PRAM CROSSING CNR CHURCH ST WATER LEAKING ON F/PATH #157
266	SH2 MASTERTON-WELLINGTON	1292	1486	Left	0	0	0	8	0	0	0	0	3	1	6	4	0	SUMP RHS ON PRAM CROSSING
266	SH2 MASTERTON-WELLINGTON	2527	2850	Right	4	5	0	3	2	1	1	12	0	0	9	4	0	POOR CONDITION
266	SH2 MASTERTON-WELLINGTON	1905	2515	Right	0	2	0	1	0	0	1	35	0	0	6	4	0	SUMP GRATE MISSING O/S #224
95	SH53 KITCHENER ST (M)	821	928	Right	4	5	0	2	0	0	0	0	0	1	11	5	0	MATERIAL A/C
95	SH53 KITCHENER ST (M)	590	692	Right	2	2	0	3	0	0	0	40	0	0	46	5	0	POOR CONDITION
267	SH53 REVANS ST (F)	399	607	Left	0	0	0	0	0	0	0	0	0	0	0	0	0	REPAIRS REQD ALONGSIDE SCHOOL FENCE LINE
267	SH53 REVANS ST (F)	399	609	Right	0	0	0	0	30	8	0	0	0	1	19	5	0	POOR CONDITION

SOUTH WAIRARAPA DISTRICT COUNCIL FOOTPATH RATING 2011 - FINAL COMMENTS																		
Road ID	Road Name	Start	End	Side	Settlement	Bumps	Depressions	Cracked	Scabbing	Patches	Potholes	O/Hang Veg	Svce Cov	Tobys	% Defect	Severity 1-5	Pram Cross	FINAL COMMENTS
109	STRASBOURGE ST	7	117	Left		0	0	0	0	0	1	8	0	0	8	4	0	POOR CONDITION
109	STRASBOURGE ST	241	353	Left		4	0	0	2	0	0	8	0	0	13	5	0	POOR CONDITION
109	STRASBOURGE ST	353	493	Left		0	4	0	6	0	0	0	0	0	7	5	0	POOR CONDITION
110	SUEZ ST	5	143	Left		0	0	0	27	0	0	0	0	0	20	5	0	POOR CONDITION
110	SUEZ ST	156	293	Left		0	0	0	70	0	0	0	0	0	49	5	0	POOR CONDITION
108	THE SQUARE R/A	0	80	Centre	1	1	0	0	0	0	0	0	0	0	3	4	0	INVENTORY REQD
108	THE SQUARE R/A	0	82	Centre	2	5	0	1	0	0	0	0	0	0	9	4	0	INVENTORY REQD
70	WALLACE ST	52	259	Left	2	1	0	0	0	0	0	0	0	0	1	4	0	POOR CONDITION
70	WALLACE ST	700	915	Right	0	0	0	0	0	0	0	0	0	0	0	0	0	INV REQD
31	WEST ST	569	1105	Right	3	4	0	0	2	0	2	0	1	0	2	5	0	POOR CONDITION

MARTINBOROUGH COMMUNITY BOARD

27 AUGUST 2012

AGENDA ITEM 6.3

PAIN FARM APPROVAL OF BUDGET FOR EXEPENDITURE

Purpose of Report

To inform members of the available budget for expenditure and how the in-house professional services overhead has been calculated.

Recommendations

Officers recommend that the Community Board:

1. *Receive the information.*

1. Executive Summary

Attached in Appendix 1 is the Pain Farm Trust Lands Income Distribution Policy which was adopted by Council as Policy on 4 April 2012.

To be tabled as Appendix 2 is the in-house professional services overhead breakdown of charges.

2. Appendices

Appendix 1 – Pain Farm Expenditure Protocol

Appendix 2 – In-house Professional Services

Contact Officer: Paul Crimp, Group Manager Corporate Support

Appendix 1 – Pain Farm Expenditure Protocol

PAIN FARM TRUST LANDS INCOME DISTRIBUTION POLICY

1. Rational

The Martinborough Community Board under the guidance of Council has a governance role of the Pain Farm Trust Lands and the recommendation of the expenditure of the income. There has been a widespread lack of understanding of the bequest and how the funds can be spent. This policy will be reviewed in accordance with SWDC requirements.

2. Purpose

- To provide guidelines for the distribution of funds from the income from the various leases of the Pain Farm Trust Lands.
- To allow greater efficiencies, understanding and transparency and give direction how and where the funds can be expended.

3. Guidelines

3.1 Administration

1. The Council shall recover fair and reasonable administration costs.
2. The Council will ensure that all leases, the land, homestead and cottage and Landfill /Transfer station will be reviewed and the intent of the bequeath and High Court judgment be complied with.
3. Council will advertise where the funds have been expended annually

3.2 Repairs and Maintenance

1. A fund of \$40,000 will be set aside for repairs and maintenance of the property and buildings, if expensed at any one time the amount will be accrued by \$10,000 amount per year until the fund is replenished.

3.3 Funding Distribution

1. The Community Board with the guidance of Council will ensure that the Council's Martinborough Parks and Reserves will have priority over available funds and will be expended as directed by the High Court's Judgement in 1966. It is recommended that the funds are spent on capital equipment/facilities.
2. Funds may be spent purchasing and funding capital sporting equipment and facilities where it will benefit the residents of Martinborough Community and with the support and guidance of Council.

3. Applications for funding community sporting (2. Above) equipment/amenities will be called for annually and will not exceed \$25,000 and if the funds are available.
4. All expenditure above \$35,000 will be subjected to the SWDC Annual Plan
5. Any funding distribution must be of benefit to the residents of Martinborough; this removes the confines of any town boundary as a sporting facility, club or reserve may be located on the outskirts of the town yet be a Martinborough amenity.
6. The Community Board may wish to accumulate funds for a specific project or raise a loan using some of the income; this will be permitted under Council guidance.

4. Background

George Pain, known as Tiny Pain or Hura Rorere (king of the road) born 1847 Wellington died 1937. A "pioneer" shepherd/farmworker, hawker, hotelier, storekeeper, landlord, run-holder/farmer and wool baron.

George Pain in 1932 made a will bequeathing the 210 acre property known as the Pain Farm to the then Borough Council (now the SWDC) with this wife having a life interest. In 1960 Mrs Pain died and the land was handed to the Martinborough Borough Council. The land that was bequeathed

'to be held on behalf of the inhabitants of Martinborough and he particularly desired that the property should as far as possible be made available as a sports ground for the residents of Martinborough and as a playground for the children'

In 1965 due to the practicality, uncertainty (the farm being held in a 21 year lease), location and the Borough Council already having a number of under utilised reserves, resolved to apply to the Supreme Court for a judgement on a scheme for the use of the income from the Pain Farm.

Under provisions of the Charitable Trust Act 1957 in February 1966 the Court directed:

"That the income from the Trust Lands should be used, in maintaining and improving the borough's parks, sports grounds, camping ground, swimming baths, providing equipping and maintaining sports facilities and a children's playground in such manner and in such proportion as the Council may from time to time decide."

From: Jenny Boyne [mailto:toraboyne@xtra.co.nz]
Sent: Wednesday, 18 July 2012 5:45 p.m.
To: Pakohe Lime
Subject: Fwd: Picnic table

Hi Adi,

Asked Albi for a quote for tables like this one and here is his quote, the concrete is optional, but I think is needed so that they don't go east.

Table and Bench Setting

This simple Table and Bench setting is set into a concrete slab, creating a unique and attractive picnic setting.

Length:	1600mm
Width:	700mm
Width of Seats :	300mm
Height of Table:	700mm (above slab)
Price:	\$1570 excl GST and transport



Park Benches Table and Bench Setting
Cheers
Jenny

Begin forwarded message:

From: Albert Matthews <matthewswhanau@xnet.co.nz>

Date: 17 July 2012 8:23:58 PM NZST
To: Jenny Boyne <toraboyne@xtra.co.nz>
Subject: Re: Picnic table

TO MARTINBOROUGH COMMUNITY BOARD

A.R. & E.J. MATTHEWS
226 PAPAWAI ROAD, RD1
GREYTOWN

THANK-YOU FOR THE OPPORTUNITY TO SUPPLY AND DELIVER THE
FOLLOWING,
MATERIAL MACROCAPA
2X TABLES (1500mm x 700mm x 90mm)TOTAL
4 X SEATS (1500mm x 300mm x 90mm) TOTAL
\$1560 plus G.S.T \$230 TOTAL \$1794

TO INCORPORATE
1 TABLE & 2 SEATS IN A CONCRETE PAD. SIZE 1800X1800 (200 THICK)
\$760 plus G.S.T.\$114 TOTAL \$874

THANK-YOU

ALBIE MATTHEWS
06 3048219
027 270 5777