

# MARTINBOROUGH SQUARE DEVELOPMENT PLAN



# INTRODUCTION

Martinborough township was established between 1881-1885 as a private land development by John Martin. The centre of the township was designed in the shape of the Union Jack with streets radiating from the central square named after places that Martin had visited on an overseas tour. Martinborough has a distinctive character which derives in part from the number of historic buildings that have been carefully restored.

This Development Plan supports the Management Plan. It will be reviewed every five years (concurrently with the Management Plan review). The Development Plan will be implemented by Council and the community as funds allow. Each year Council will prepare an annual programme of work. This will be considered as part of the Council's Draft Annual Plan.

## Five areas of focus

Martinborough Square currently functions well as a public open space and does not need redesign. However, with some relatively minor changes it could be improved in terms of its landscape appeal and its use. This Development Plan proposes 5 areas that will assist in improving the amenity value and functionality of the square. These 5 project areas of focus are:

- Museum and Surrounds
- Boer War Memorial
- Promenade
- Trees
- Design Elements

For each of these areas, high quality elements that are designed to be enduring in terms of style and quality of materials will be selected to improve the amenity value of the area.

## Setting the Scene

Martinborough Square is the town's pre-eminent area of open space and provides a hub for the community. In the centre of Soldiers Memorial Park is the Boer War Memorial. Views down the four main streets (Kitchener St, Jellicoe St, Cambridge St and Oxford St) are orientated towards this memorial.

Located around the outer edge of Soldiers Memorial Park are several heritage buildings. These buildings help to give definition and enclosure to the square. While most sides of the square have buildings defining their edges, the eastern corner of the square is not well defined.

The lack of seating and other elements to draw people into the centre of the square mean that the square is not used to its full potential.

The dense canopy of the trees in Soldiers Memorial Park limits the amount of light and reduces the visual and physical accessibility of the square.

Much of the furniture and amenity facilities such as the toilet block have become rundown and appear out of character with the rest of the square.



# AREAS OF FOCUS

## 1. Museum and Surrounds

It is proposed to relocate the courthouse from Cork St to a site between the museum and playground, and erect a new toilet block between the courthouse and museum.

## 2. Boer War Memorial

The planting around the Boer War Memorial in Soldiers Memorial Park is out of scale with the memorial and the trees surrounding it. A more appropriately scaled planter box and associated seating will help to encourage greater utilisation of the space.

## 3. Promenade

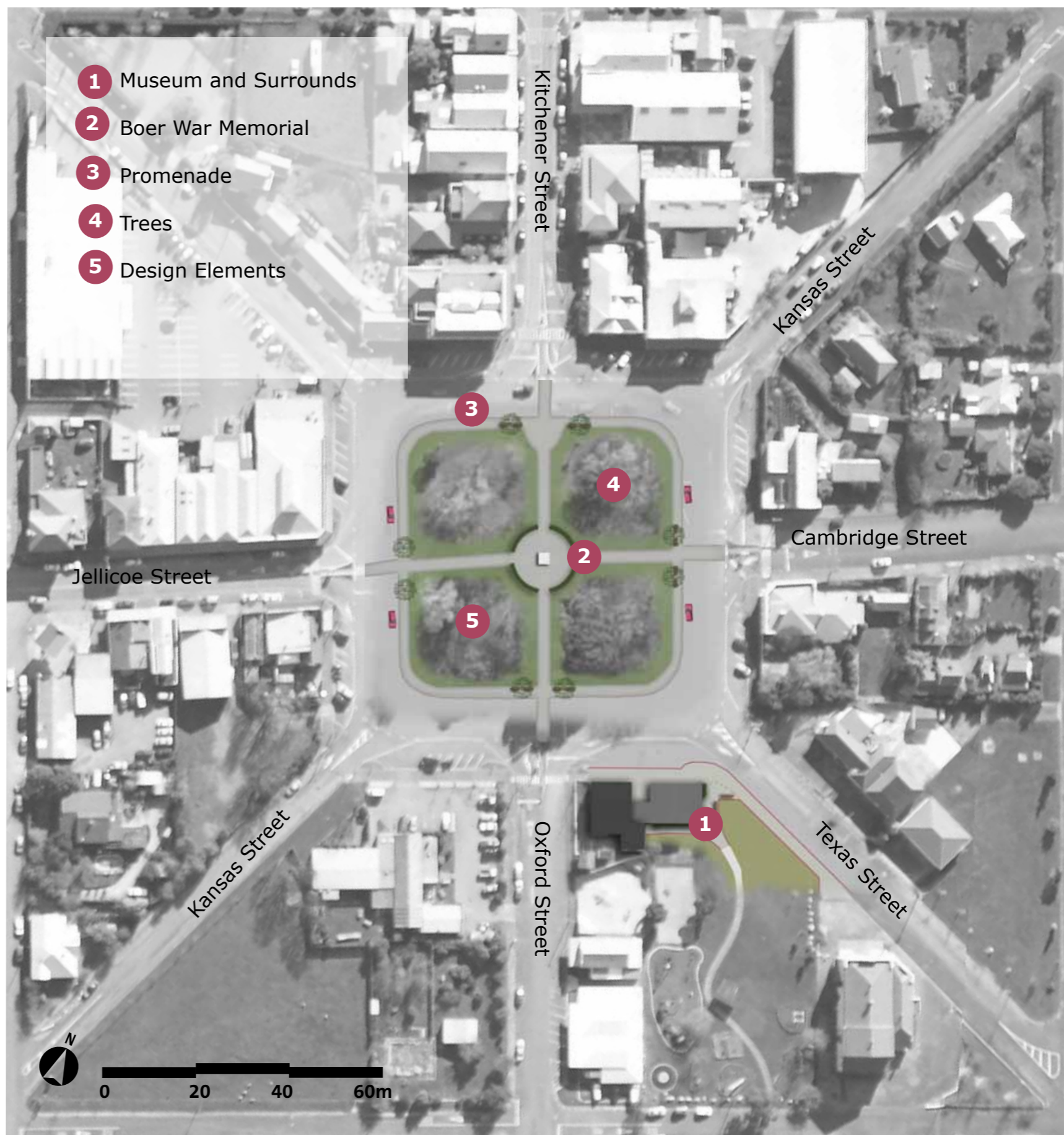
It is proposed that the pedestrian promenade around the edge of the central square be upgraded with asphalt and brick, consistent with the other footpaths in town.

## 4. Trees

Many of the trees in Soldiers Memorial Park are in poor health and in need of maintenance. It is proposed that the trees will be regularly maintained and where necessary, removed to encourage growth in the remaining healthy trees in accordance with the specifications detailed in this report.

## 5. Design Elements

In addition to these five areas, several other design elements will be incorporated into the square - seating, plaques, lighting, and picnic tables.

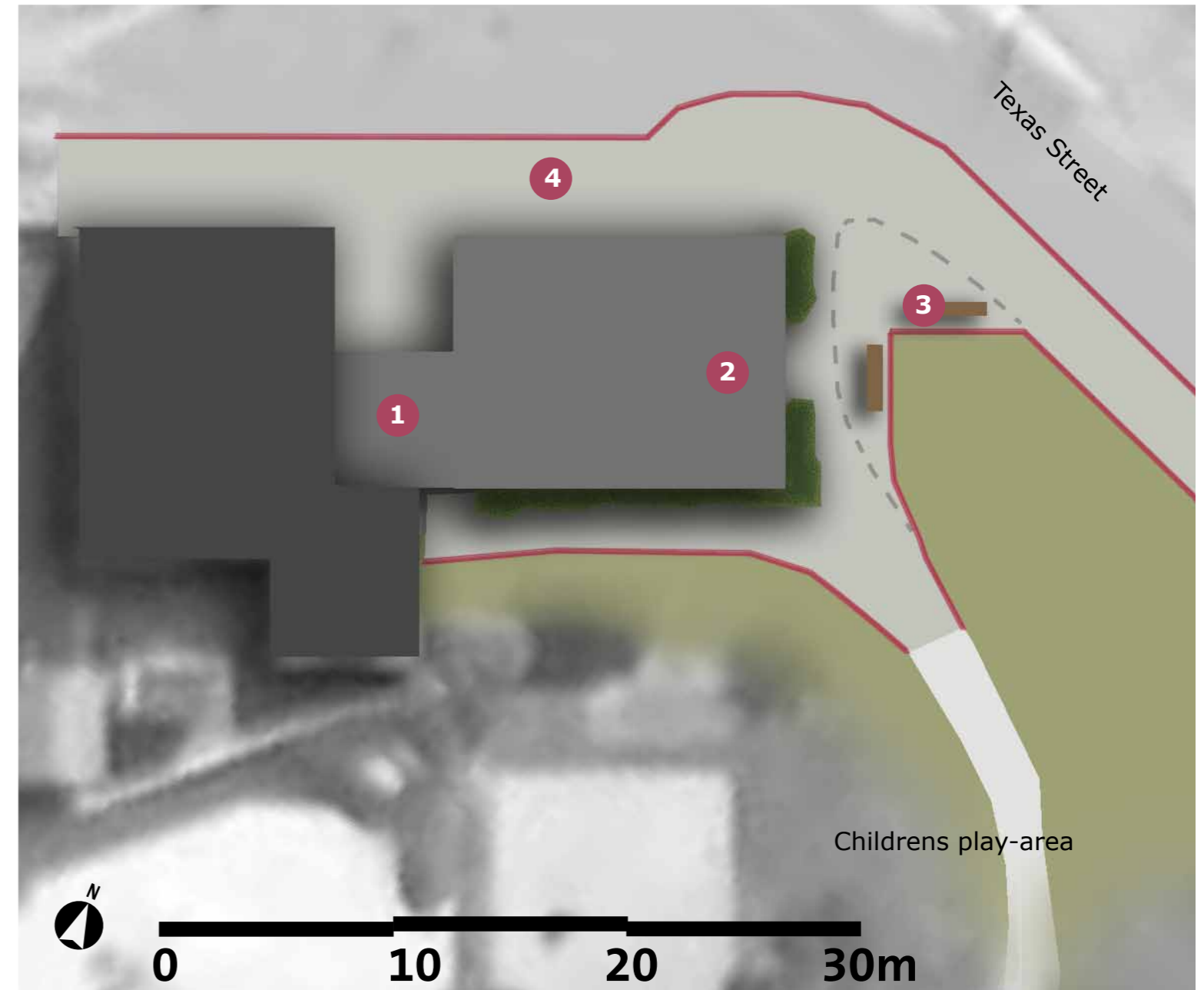


# MUSEUM AND SURROUNDS

*Linking Soldiers Memorial Park to the Museum*



View from the west looking towards the Museum and the relocated courthouse.



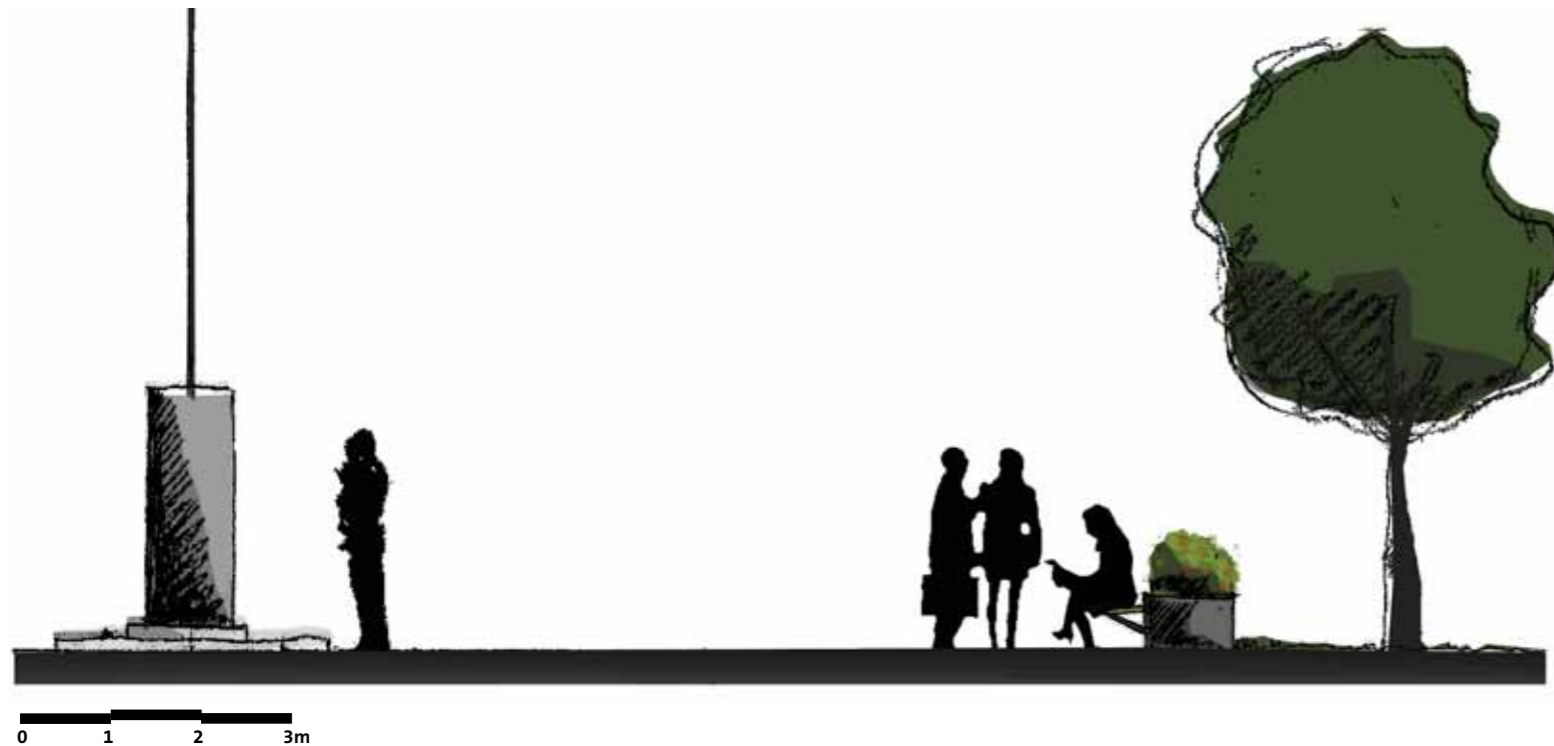
- 1 Toilets replaced and located adjacent to, and can be accessed from, play area and Soldiers Memorial Park.
- 2 Courthouse relocated to create a strong edge on the south-western corner of the Square.
- 3 Entry to children's play area is marked with seating and an interpretive plaque provides information about adjacent courthouse and museum.
- 4 Asphalt pavement with red brick edging treatment.

# BOER WAR MEMORIAL

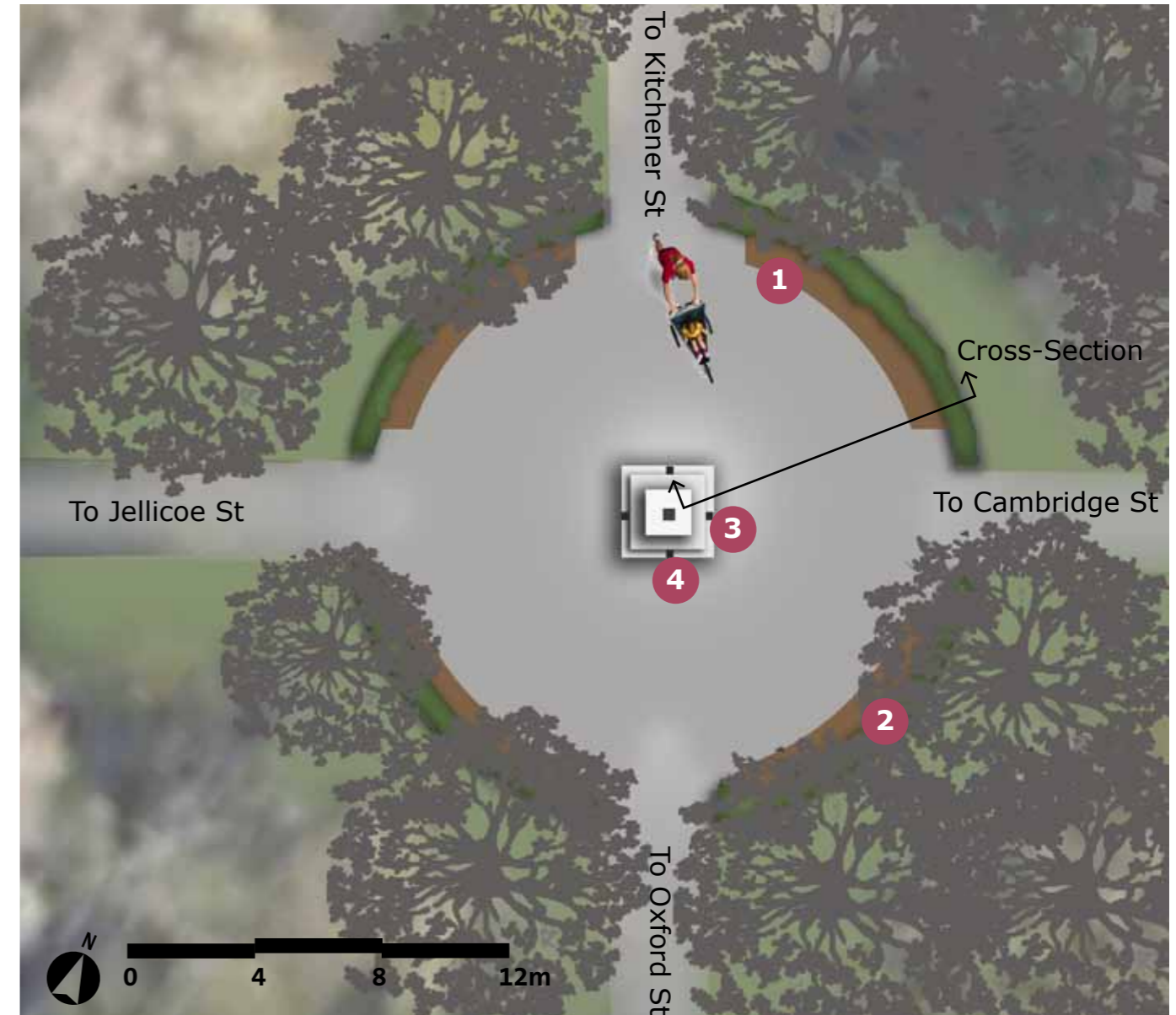
Enhancing the Boer War Memorial day and night



View from World War I gates looking towards Boer War Memorial.



Cross-Section through Boer War Memorial and surrounding seating and flower beds.



- 1 Seating provided adjacent to the Boer War Memorial.
- 2 New taller concrete planter will create a stronger edge whilst still allowing views and ensuring safety. Roses will be replaced with perennial shrubs. The three Peace roses will be moved to their own dedicated garden.
- 3 Plinth to Memorial to be replastered and the light to be replaced with the original or a suitable replica.
- 4 Inground uplights to be create focus at night, where colour filters will be used only on special occasions.

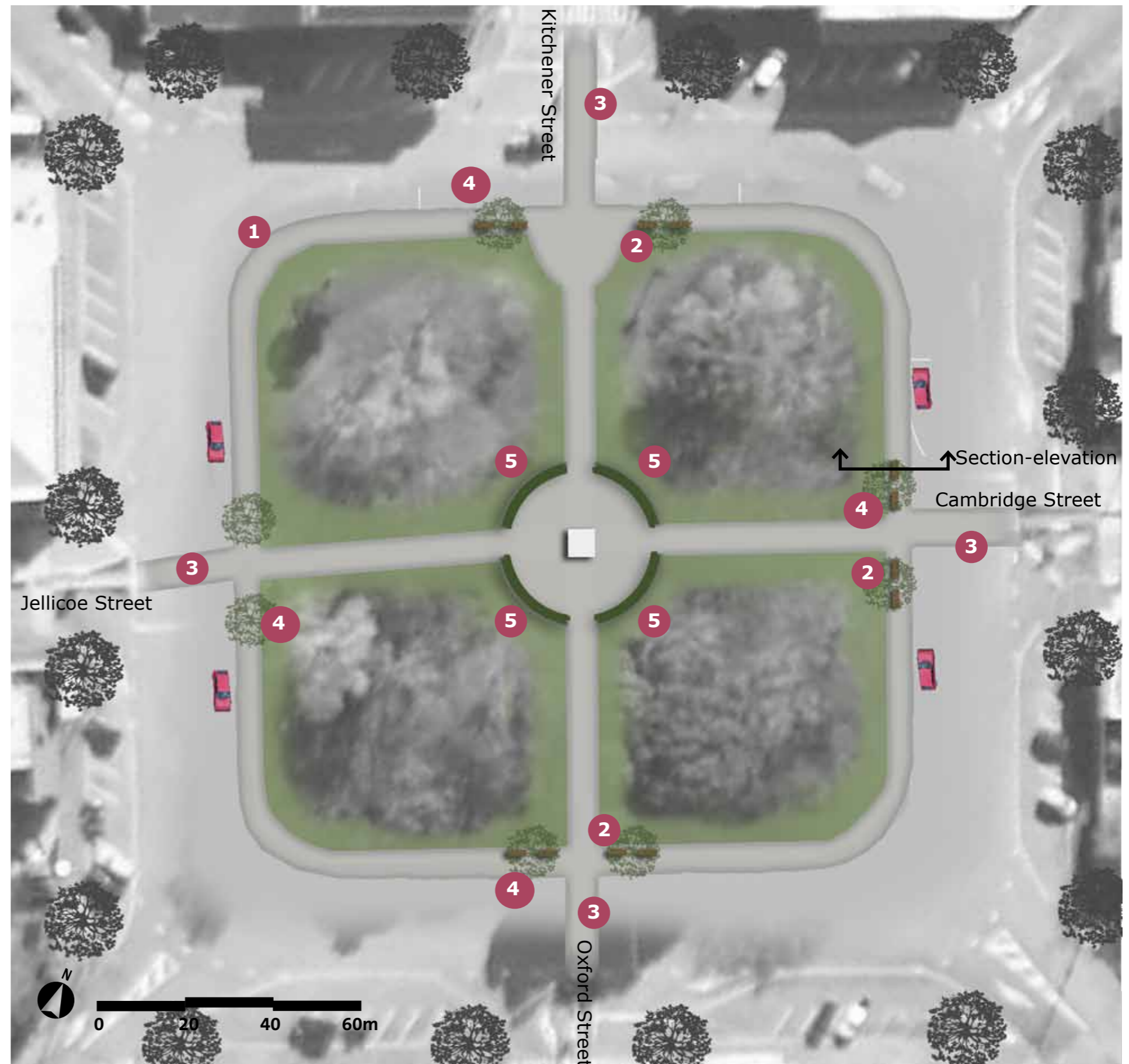
# PROMENADE

Improving pedestrian use and enjoyment of the Square



Section elevation through promenade showing seating.

- 1 Footpath to be upgraded with asphalt and brick consistent with other footpaths in town.
- 2 Seating adjacent to main pedestrian entry points and set back from promenade.
- 3 Pedestrian crossing paved using same treatment as promenade to visually draw people into the square. Annuals will be planted at each pedestrian crossing.
- 4 Small specimen trees located at either side of the entrances to the square act to emphasise the main axis through the Square.
- 5 One native tree will be planted in each quadrant of Soldiers Memorial Park, with a plaque for each to commemorate the four original Martinborough settlers.



# DESIGN ELEMENTS - SEATING



Wide seating similar to above in addition to picnic tables can be used in a variety of ways.



## Seating around Boer War Memorial

The seating around the Boer War Memorial cantilevered off the planter.



## Picnic Tables

Example of picnic tables within the Square, to be attached to concrete pads.

# INTERPRETATION, TREE GUARDS AND LIGHTING



## Lighting

The Boer War Memorial and the World War II Memorial Gates uplit with in-ground lighting such as ETC 130 In-ground Uplights produced by *we-ef lighting*.



## Tree Guard

Tree guards will be used to protect new street trees.



## Interpretation

Interpretation plaques around the square providing information about the history of Martinborough and the historic buildings.