



SOUTH WAIRARAPA DISTRICT COUNCIL

Kia Reretahi Tātau

Reading your water meter

Meter location

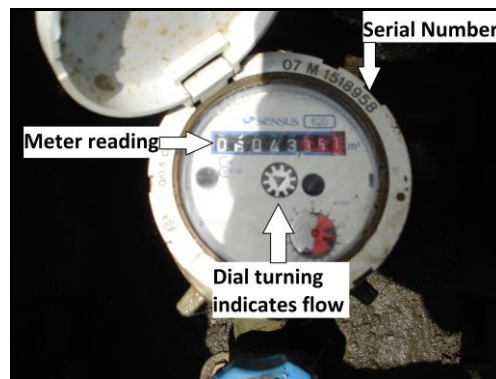
Most water meters are located in a blue toby box on the property boundary either on a footpath or in the grass berm:



If required the water supply to your house can be turned off by turning the shut off valve shown clockwise

Meter information

Your meter reading is always done in Cubic metres (m³). The black dials indicate the reading in m³ and a serial number is used to identify each meter:



Checking for Leaks

If you want to check for a leak on your property the easiest way to do so is to turn off all taps and appliances which use water and then check the meter. If the dial in the centre of the meter is turning it indicates water is flowing through the meter and therefore a possible leak. Contact a plumber to fix the leak – remember, you will be charged for using over 350m³ per year, even if it is due to a leak.