

Looking South

January 2018



A Message from the Mayor

Happy New Year

2017 was a very successful year for the South Wairarapa District and the Council. Not only have we seen a huge increase in resource and building consent numbers but we have seen a thriving property market in all our towns and rural areas. New businesses have opened and the number of people looking for work has decreased. Our school rolls are increasing and our tourism numbers have risen 15% in the last year. This increased activity bodes well for the future.

We have started discharging wastewater to land in Martinborough, the Waihinga Centre is taking shape and our swimming pools are open free for everyone to enjoy over the summer. We were successful in an application to the Tourism Infrastructure Fund; this money will be used to provide better facilities for campers and tourists at Ngawi and other coastal locations.

The new council is working very effectively and we will soon be releasing the 2018 – 2028 Long Term Plan for consultation. The development of the plan has had input from councillors, Community Boards and the Maori Standing Committee. Before Christmas a number of sector group meetings were held to understand people's aspirations for the South Wairarapa for the next two to three decades. At the same time the new government announced that they will be funding a Regional Development Fund with a focus on regional rail, infrastructure, especially the 3 waters, forestry, climate change and tourism. We will be working collaboratively with Carterton and Masterton Councils to make an application to this fund.

Please respect and value our water supply. The council website has good tips on how individuals and businesses can conserve water. Be Water Smart.

Viv Napier
The Mayor



Water conservation

This is a reminder that SWDC has water restrictions on year round.

Council's Water Conservation Policy allows watering of gardens on alternate days only throughout the year. The policy permits odd numbered properties (or fire numbers) to water on odd numbered dates and even numbered properties (or fire numbers) to water on even numbered dates.

The extreme dry conditions that South Wairarapa in early summer meant that the water flow in the Ruamahanga and Waiohine Rivers was at a low level requiring the need for additional water conservation measures. **With immediate effect, and till advised otherwise, sprinklers or other irrigation devices should not be used.** Use of handheld hoses is still permitted on alternate days. Avoid water evaporation by watering your gardens early morning or early evening rather than in the heat of the day.

Water restrictions can change and these changes are advertised on the radio, in the local papers and on the SWDC Website and Facebook pages.

Amalgamation Poll Result

In November last year the electors of Wairarapa rejected the proposal for a combined Wairarapa District Council. The final outcome was

FOR: 6,578 41.24 AGAINST: 9,371 58.76
INFORMAL 6 BLANK VOTING PAPERS 21

The voter return was 47.43%, being 15,976 voting papers.

The result is binding and brings to an end the Local Government Commission's proposal for a combined Wairarapa District Council. South Wairarapa, Carterton and Masterton district councils will continue to represent the local government interests of the residents and ratepayers of their respective districts.

There are no statutory provisions preventing further Wairarapa reorganisation applications. However, applications must meet criteria set out in the Local Government Act 2002, and the

Commission has some discretion in whether or not to assess them if the proposals cover similar matters to those previously considered.

The Wairarapa has been through more than five years of active and at times robust discussion on its local government arrangements. Mayor's and councils now want to focus on providing the most effective local government they can within the existing system.

Any residual queries relating to the conduct of the Wairarapa reorganisation poll should be addressed to:

Warwick Lampp
Electoral Officer – Wairarapa Reorganisation Poll
PO Box 3138,
Christchurch 8140
iro@electionz.com
0800 666 046

Waihinga Centre update

Waihinga Centre

- ◆ All beams are now up. Computer 3D design drawings were so accurate all beams fitted together perfectly, a month's worth of planning to get this right certainly paid off.
- ◆ The Roof will be the first priority early in 2018. On 14 January workers will be back on site. A larger team will be working on the roof structure.
- ◆ The total slab has now been poured and was flooded so it would cure properly in the hot dry weather. The next step is to make the cuts. 40mm deep construction cuts to help prevent cracking.

Town Hall

- ◆ The main structural beam has been poured under the stage
- ◆ The boxed framing for the supper room is incredibly robust
- ◆ Concrete foundation slab is 700mm deep. Foundations have taken 3-4 months to complete.
- ◆ Plywood bracing on the walls and ceiling will tie the structure together
- ◆ A steel frame around the proscenium and main hall will provide strong reinforcing



Swimming Pools

2017/18 season

The South Wairarapa pools are open until Sunday 18 March 2018

Featherston Pool - Johnston Street, Featherston

Martinborough Pool - 1-13 Princess Street, Martinborough

Greytown Pool - 11-55 Kuratawhiti Street, Greytown

Opening hours during school holidays:

Saturday to Thursday 1:00pm – 5:30pm

Friday 1:00pm – 7:30pm

There is **no charge** for admission for adults or children at all three Council pools

Note: Children under eight years of age must be actively supervised by a responsible person 16 years old or over at all South Wairarapa District pools.



Long Term Plan (LTP)

Our Long Term Plan process commenced several months ago and has included input from Councillors, Community Board members, Maori Standing Committee members and staff. We also held a number of Sector Group meetings during October and November to get input from the community on what people would like the future of the South Wairarapa to look like. There has been some very thought provoking and positive discussion to date and in the new year we will be commencing the formal consultation process to hear our ratepayers views on various initiatives the Long Term Plan working party would like to pursue.

Keep an eye out in the local newspaper for the Consultation Document which will summarise the initiatives being considered along with estimated impact on rates. The Consultation Document will be published at the end of March 2018 and is your opportunity to have your input into the Long Term Plan which covers the next ten years. We will also be holding three consultation evenings in April where residents will be able to come along and talk with Councillors and Community Board members about their opinions on the Consultation topics.

These meetings will be held at 7pm in Featherston (10 April), Martinborough (11 April) and Greytown (12 April).

The deadline to submit any written submissions on the LTP is 20 April 2018 and this will be followed by formal submission hearings in the middle of May.

Having considered all submissions, Council will finalise and approve the LTP at the end of June 2018.

We encourage all ratepayers and residents to have input into this consultation process so that we can get the best outcome for the future of South Wairarapa.

Featherston waste water consultation

The new resource consent application was lodged on 28 February 2017. Greater Wellington Regional Council (GWRC) responded on 19 April with an s92 request for information, which the Council replied to on 2 June 2017. Subsequently further questions around stream clarity and land treatment methodologies have been received and were responded to on 11 October 2017.

However, further related matters have been raised in relation to water quality and land discharge issues and it is expected now that pending the resolution of these matters, that the application will not be notified until 2018. The Council's aim remains to secure a long term consent for this site which will provide long term certainty and staged affordable improved environmental outcomes.

Martinborough Urban Area: Provision for future growth

The SWDC commissioned an initial study of Martinborough in February 2017. This study was to establish where a more detailed study would focus on in relation to the towns overall urban form and ability to provide for both conventional residential and low density residential development.

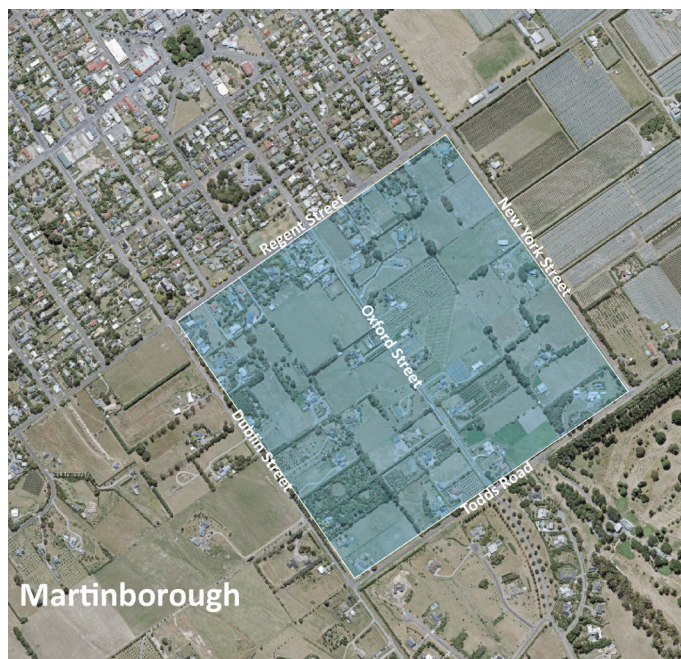
This study is titled 'Martinborough Urban Area : Residential growth focus, a process for exploring growth options' dated 15 March 2017, Kaha Consultancy and was reported to Council at its April 2017 meeting (<https://www.swdc.govt.nz/sites/default/files/DCAG5April17C6MbaGrowth.pdf>).

In essence this report confirmed the need for further residential land in Martinborough and identified the block between New York, Todds, Dublin and Regent Street as the prime area for investigation. While this block is the primary focus it is possible that some nearby land will also be examined.

Council is now in the process of commissioning consultants to undertake the growth study with work planned to start in the first quarter of 2018. The draft work programme includes significant consultation with landowners in the identified area, as well as with various parties with an interest in development in Martinborough.

The end result of the study will be recommendations to Council to start rezoning of land (which has proved suitable and available) under the Resource Management Act from rural to residential to enable its development. In addition any structure plan requirements (for sewerage, water supply, drainage, roading, reserves) will be established for adoption as part of the rezoning process.

The entire work programme for these tasks is likely to be around 6-12 months (depending on outcomes of consultation and legal processes).



Cemetery Times

The gates at Featherston Cemetery are locked daily at 5.30pm and unlocked at 6.30am. Greytown Cemetery gates are locked at 7.00pm and unlocked at 6.00am. Please note these hours may change during the winter months.

Rebates 2017/18

The Rates Rebate Scheme provides a rebate of up to \$620.00 for low income earners. Ratepayers must have been living in the home they own on 1 July 2017.

1. Your rebate will be calculated based on your gross income from 1 April 2016 to 31 March 2017, your rates, and the number of dependants you have. The income eligibility for a rebate is \$24,790-\$42,000.
2. You must provide proof of income from your income provider for ALL forms of income, including interest & dividends.
3. Application forms have already been sent to those who have received a rebate in 2016/2017 and are also available from the Featherston and Greytown Libraries, the Council office and online swdc.govt.nz/rates-and-property.

Get Your Rates invoice by email

We now have a facility to send rates invoices by email. If you wish to receive your rate notice by email contact rates@swdc.govt.nz

We encourage you to take up this option to allow Council to use the postage savings on projects to benefit the district.

Having Trouble Paying your Rates?

Please contact us as soon as possible so we can work with you on a payment plan. Council's policy is to approach banks and legal representatives to assist us in recovering arrears at the end of the rating year.

For any queries regarding your rates, please contact our rates team at the following e-mail address: rates@swdc.govt.nz

Payment by Direct Debit

Council encourages ratepayers to pay rates via Direct Debit as this ensures the correct amount is paid and you avoid paying penalties for late payment.

Based on feedback from ratepayers, we now offer **weekly, fortnightly, monthly or quarterly** direct debit options to pay rates.

Direct debit is the easiest way to pay your rates as we withdraw the funds directly from your bank account at the very last minute. That way you will get the benefit of your funds for the longest possible time, and avoid penalties.

If you would like your payments to be made by using this method the forms are available from the Featherston and Greytown Libraries as well as the Council office and on our website swdc.govt.nz/rates-and-property. All you need to do is complete the form and send it to the Council Office, PO Box 6, Martinborough 5741, scan and email it to rates@swdc.govt.nz or drop it off at either the Council office in Martinborough or at the Featherston and Greytown Libraries.

Rates 2017/18 Instalment Three

Enclosed with this newsletter is the third rates invoice covering the period 1 January – 30 April.

**The last day for payment
is 20 Feb 2018**

**Please pay by this date to
avoid the 10% penalty.**

Please help us to process payments by ensuring you include the property valuation number for all properties you are paying. If paying online please make a separate payment for each property.

GET IT SORTED

To South Wairarapa District Council, P.O. Box 6, Martinborough 5741

From:

First Name

Surname

What's the Problem?

Where Exactly?

Street, Road, Number

Your Phone Number *(Should we need to contact you to clarify the details)*