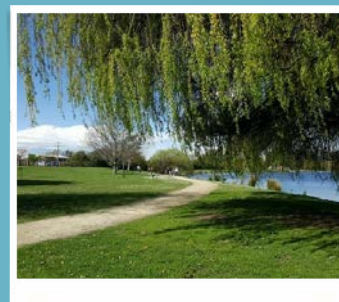


# WAIRARAPA WALKS

## Henley Lake & Wetlands

Different loops and options of scenic trails around the waterways of Henley Lake. Link into the Masterton Rec trails

More info [www.mstn.govt.nz](http://www.mstn.govt.nz)



## Masterton Rec Trails

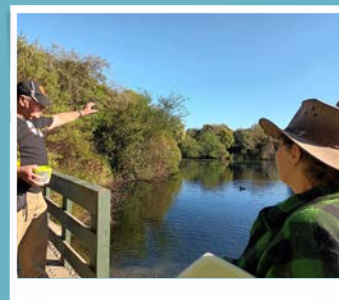
A 4km trail network from Fourth Street, stretching through and connecting with Milford Downs and a trail network along the Waipoua Riverbank from Colombo Road to Akura Road, which stretches for 2.4km. More info [www.mstn.govt.nz](http://www.mstn.govt.nz)



## Millennium Reserve

A community-run project that has transformed bare land into a flourishing reserve filled with native species a network of walkways, springs, lakes and birdlife. Located in Masterton.

More Info [www.mtl.org.nz](http://www.mtl.org.nz)



## Castlepoint Lighthouse Walk

Explore Castlepoint Scenic Reserve by following the boardwalk over the reef and past the lighthouse. 30 minutes return.

Links to Deliverance Cove track. More info [www.doc.govt.nz](http://www.doc.govt.nz)



## Rewanui Exotics | Natives | Trig walks

Rewanui is a 334ha property, 23km east of Masterton on the Castlepoint road. The loops through the native bush visit as many of the big trees as possible. The Mt Clyde track involves a good steady climb but rewards you with stunning views. The Exotics Loop takes you across the farm to some of the recent tree trial plantings. More Info [www.trimblefoundation.org.nz](http://www.trimblefoundation.org.nz)

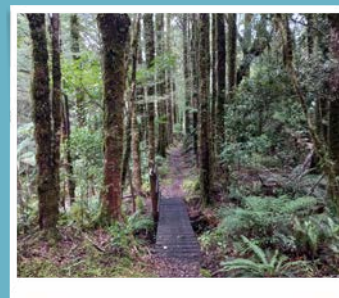


# WAIRARAPA WALKS

## Kiriwhakapapa Loop Track

At the end of Kiriwhakapapa road, 20 minutes north of Masterton. A 2km / 30 minute loop through regenerating native bush with Redwoods near the carpark.

More Info [www.doc.govt.nz](http://www.doc.govt.nz)



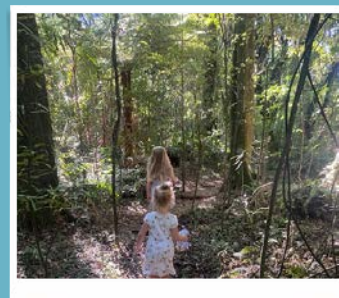
## Rocky Lookout

Walk up to a viewing platform for extensive views of the surrounding area. 1.5 - 2hours (1.9km) one way. Located at Mount Holdsworth. More info [www.doc.govt.nz](http://www.doc.govt.nz)



## Fensham Reserve

There is one circuit track on the reserve that takes approximately one hour to walk. From this track you can access the old fence track and the brow track. Located 5km west of Carterton. More Info [www.forestandbird.org.nz](http://www.forestandbird.org.nz)



## Carter Scenic Reserve

Also known as Uhi Mānuka, is one of the few remaining remnants of patchwork landscape once typical of the Wairarapa - grass, wetland, shrubland, and forest. 12km SE of Carterton.

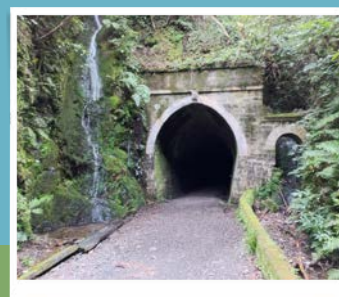
More info [www.doc.govt.nz](http://www.doc.govt.nz)



## Remutaka Rail Trail

Built in 1878, this rail route between the Hutt Valley and Featherston is now a gently graded 18 km walk, run or mountain bike ride. Wairarapa access South of Featherston.

More info [www.doc.govt.nz](http://www.doc.govt.nz)



# WAIRARAPA WALKS

## Greytown Woodside Trail

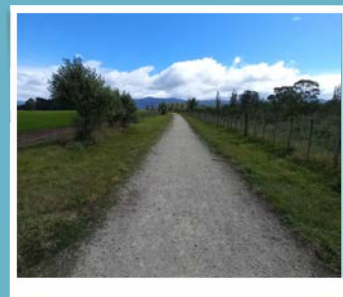
Out and back on an historic railway line turned into a trail. Carpark is at Cotter Street Greytown. Additional parking at the dog park, or if coming by rail - at Woodside station.

More Info [www.greytownrailtrail.org.nz](http://www.greytownrailtrail.org.nz)



## Greytown Lions Nature Trail

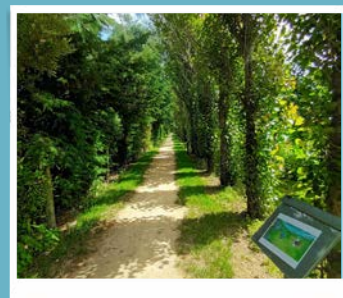
A walking and cycling trail in Greytown. Access from North street (Udy street junction) or Kuratawhiti St. Small carpark at North St entrance. Dogs must be on leads. Relatively flat path through farmland.



## Martinborough Storywalk

StoryWalk® is a popular concept overseas which aims to combine physical exercise, nature and a love of reading. Using a series of posts, it tells a story along an established walkway page by page, weaving a narrative for the follower.

More Info [www.swdc.govt.nz](http://www.swdc.govt.nz)



## Putangirua Pinnacles Track

Walk to the spectacular Putangirua Pinnacles or further for excellent views of Palliser Bay and Lake Onoke  
- the shorter options are suitable for kids.

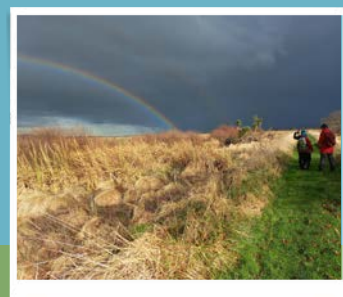
More info [www.doc.govt.nz](http://www.doc.govt.nz)



## Wairarapa Moana Scenic Reserve

The area includes Lakes Wairarapa and Ōnoke, their neighbouring wetlands, the Wairarapa Lake Shore Scenic Reserve and Ōnoke Spit.

More info [www.waiwetlands.org.nz](http://www.waiwetlands.org.nz)



# WAIRARAPA WALKS

## Rapaki Walk Martinborough

This loop walk across farmland has spectacular views of the Wairarapa valley and Martinborough vineyards. Near the highest point, a stile takes walkers to an optional viewpoint over the scenic Te Muna Valley. Closed during September and October for lambing. No dogs allowed.

More info <https://martinboroughwinevillage.nz/>



**SOUTH WAIRARAPA  
DISTRICT COUNCIL**  
*Kia Reretahi Tātau*

